

OIL CONSERVATION DIVISION

P. O. BOX 2088

SANTA FE, NEW MEXICO 87501

Form C-107
Revised 10-1-78

STATE OF NEW MEXICO

ENERGY AND MINERALS DEPARTMENT

All distances must be from the outer boundaries of the Section.

Operator TENNECO OIL COMPANY		Lease JICARILLA "B"		Well No. 5E
Unit Letter E	Section 21	Township 26N	Range 5W	County Rio Arriba
Actual Footage Location of Wells 1850 feet from the North line and 870 feet from the West line				
Ground Level Elev. 6578	Producing Formation Dakota	Pool Blanco Mesaverde Basin Dakota	Dedicated Acreage W/ 320 Acres	

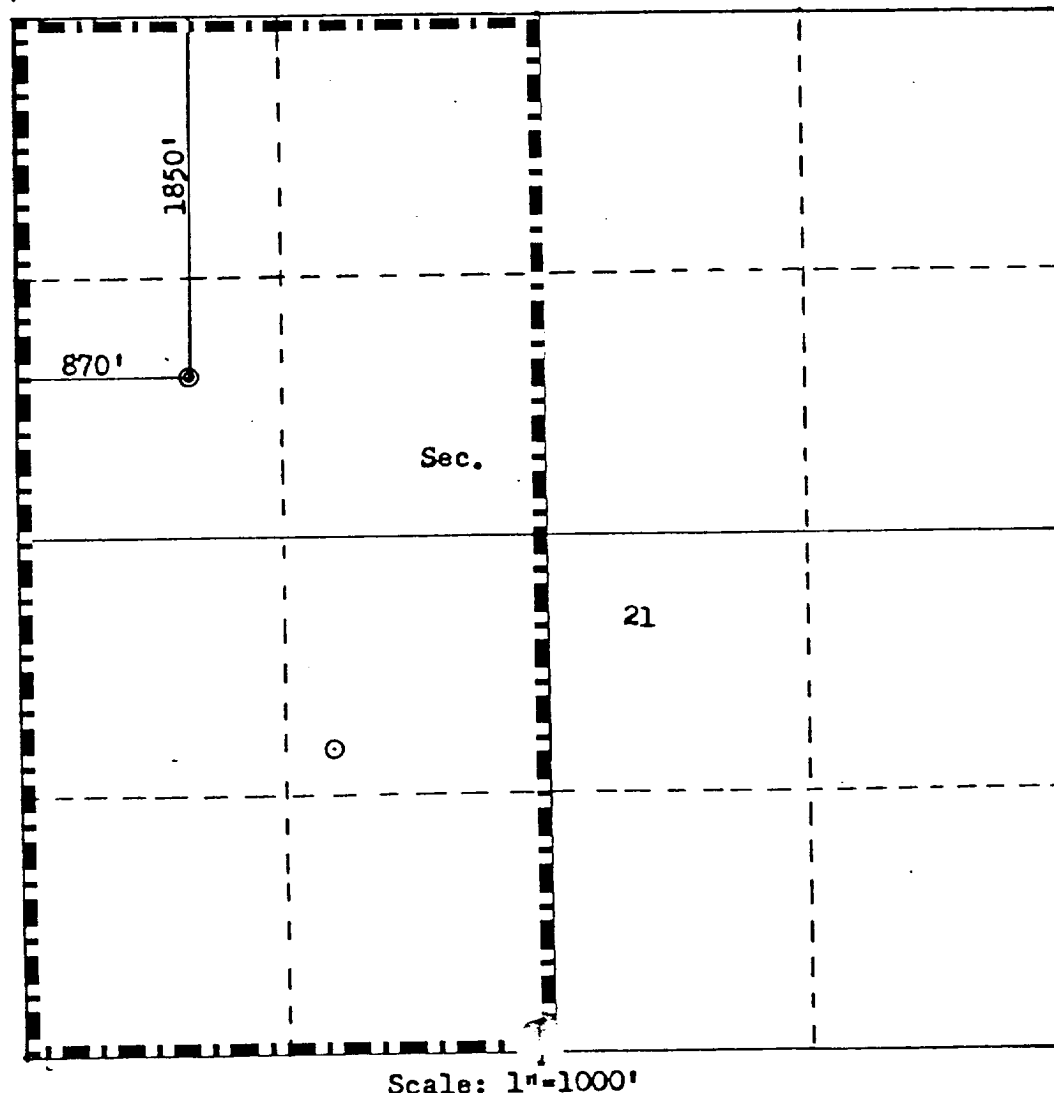
- Outline the acreage dedicated to the subject well by colored pencil or hachure marks on the plat below.
- If more than one lease is dedicated to the well, outline each and identify the ownership thereof (both as to working interest and royalty).
- If more than one lease of different ownership is dedicated to the well, have the interests of all owners been consolidated by communitization, unitization, force-pooling, etc?

RECEIVED
DEC 1 - 1983

☐ Yes ☐ No If answer is "yes," type of consolidation _____

If answer is "no," list the owners and tract descriptions which have actually been consolidated. (Use reverse side of this form if necessary.) _____

No allowable will be assigned to the well until all interests have been consolidated (by communitization, unitization, forced-pooling, or otherwise) or until a non-standard unit, eliminating such interests, has been approved by the Commission.



CERTIFICATION

I hereby certify that the information contained herein is true and complete to the best of my knowledge and belief.

Name

Don H. Harrison

Position

Production Analyst

Company

Tenneco Oil Company

Date

10-13-81

I hereby certify that the well location shown on this plat was plotted from field notes of actual surveys made by me or under my supervision, and that the same is true and correct to the best of my knowledge and belief.

Date Surveyed

October 15, 1981

Registered Professional Engineer and Land Surveyor

Fred B. Kerr

Certificate No.

3950