

NO. OF COPIES RECEIVED	
DISTRIBUTION	
SANTA FE	
FILE	
U.S.G.S.	
LAND OFFICE	
OPERATOR	

NEW MEXICO OIL CONSERVATION COMMISSION

Form C-101
Revised 1-1-65

30-039-22952

5A. Indicate Type of Lease
STATE FEE

5. State Oil & Gas Lease No.
E 29117 E 291 25

APPLICATION FOR PERMIT TO DRILL, DEEPEN, OR PLUG BACK

1a. Type of Work
b. Type of Well DRILL DEEPEN PLUG BACK
OIL WELL GAS WELL OTHER SINGLE ZONE MULTIPLE ZONE

2. Name of Operator
Caulkins Oil Company

3. Address of Operator
P.O. Box 780, Farmington, New Mexico 87401

4. Location of Well
UNIT LETTER K LOCATED 1715 FEET FROM THE West LINE
AND 1740 FEET FROM THE South LINE OF SEC. 16 TWP. 26 North R. 6 West NMPM

7. Unit Agreement Name

8. Farm or Lease Name
State B Comm

9. Well No.
233 E

10. Field and Pool, or Willent
Otero Chacra Blanco Mesa Verde - Basin Dakota

12. County
Rio Arriba

19. Proposed Depth
7500'

19A. Formation
Dakota

20. Rotary or C.T.
Rotary

21. Elevations (Show whether DF, RT, etc.)
6669 Ground

21A. Kind & Status Plug. Bond

21B. Drilling Contractor
Aztec Well Service

22. Approx. Date Work will start
June 1, 1982

PROPOSED CASING AND CEMENT PROGRAM

SIZE OF HOLE	SIZE OF CASING	WEIGHT PER FOOT	SETTING DEPTH	SACKS OF CEMENT	EST. TOP
13 3/4"	9 5/8"	32.30	300'	250	Surface
7 7/8"	5 1/2"	15.5 & 17	7500	1400	Surface

It is proposed to drill Dakota Infill well to approx. 7500'. 5 1/2" 15.5# and 17# smls. casing to be run to TD and cemented in 3 stages with sufficient cement to circulate to surface.

Well will be drilled with 9.0# fluids surface to TD. A 10" 3000# WP, 6000# test BOP will be in use at all times while drilling below surface pipe.

This acreage dedicated to Gas Company of New Mexico.

Subject to Approval by OCD, well will be Dual Completed and Downhole Commingled with packer set between Dakota and Mesa Verde-Chacra commingled zones. All three zones will be perforated and sand-water frac'ed individually to stimulate prod.

APPROVAL VALID FOR 90 DAYS UNLESS DRILLING COMMENCED. EXPIRES 4/22/1982

IN ABOVE SPACE DESCRIBE PROPOSED PROGRAM; IF PROPOSAL IS TO DEEPEN OR PLUG BACK, GIVE DATA ON PRESENT PRODUCTIVE ZONE AND PROPOSED NEW PRODUCTIVE ZONE. GIVE BLOWOUT PREVENTER PROGRAM, IF ANY.

I hereby certify that the information above is true and complete to the best of my knowledge and belief.

Signed Charles E. Argue Title Superintendent Date 4-19-82

(This space for State Use)

APPROVED BY Frank J. [Signature] TITLE _____ DATE APR 22 1982

CONDITIONS OF APPROVAL, IF ANY: None R 1677 for Dakota
Hold C104 on MV for [unclear]
Hold C104 on [unclear] for [unclear]

All distances must be from the outer boundaries of the Section.

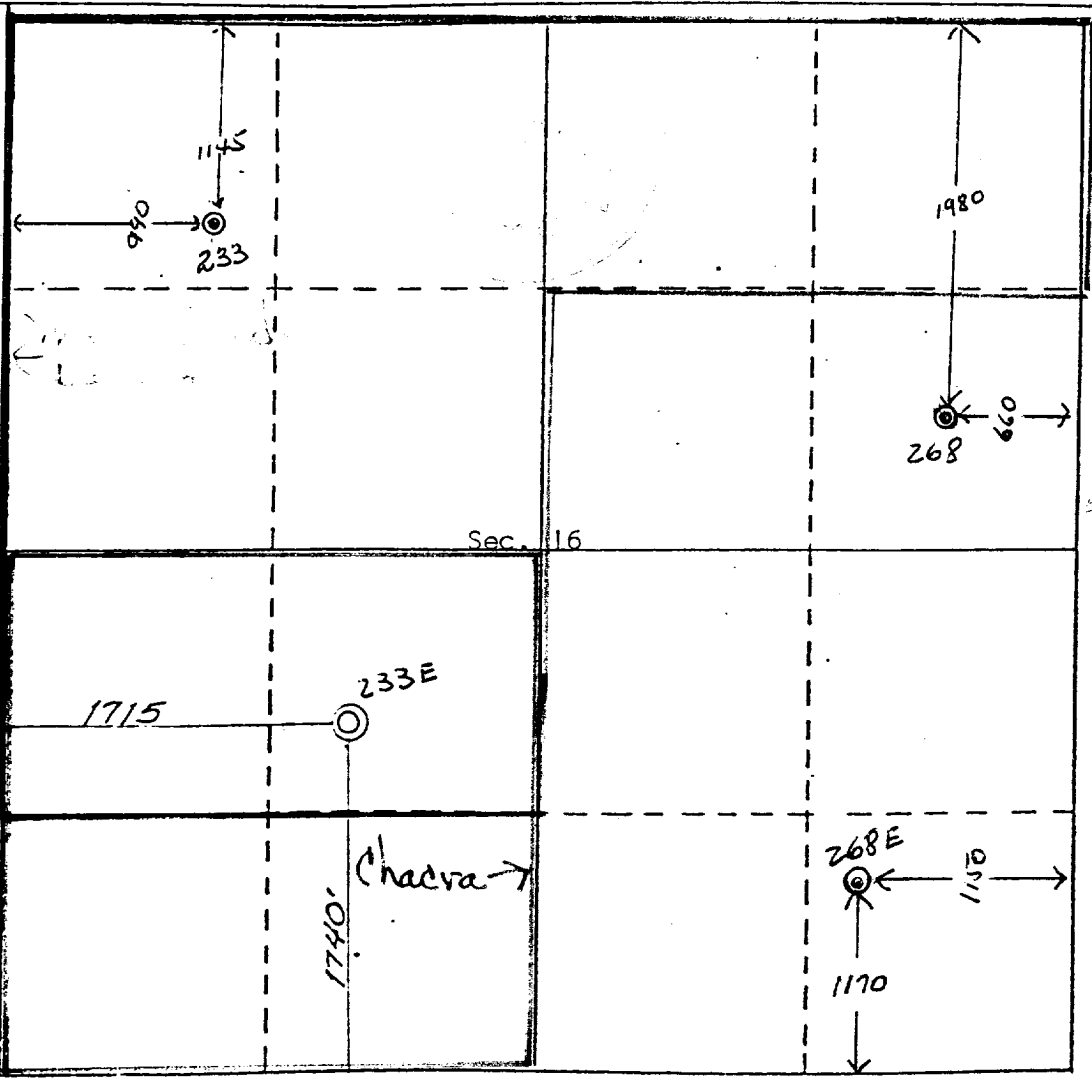
Operator CAULKINS OIL COMPANY		Lease STATE "B"		Well No. 233-E	
Unit Letter K	Section 16	Township 26 NORTH	Range 6 WEST	County RIO ARRIBA	
Actual Footage Location of Well: 1740			South line and 1715 West line		
Ground Level Elev. 6669.0	Producing Formation Chacra-Mesa Verde-Dakota	Pool Otero Chacra - Blanco Mesa Verde Basin Dakota	Dedicated Acreage: 180 Chacra 320 Mesa Verde-Dakota		

1. Outline the acreage dedicated to the subject well by colored pencil or hachure marks on the plat below.
2. If more than one lease is dedicated to the well, outline each and identify the ownership thereof (both as to working interest and royalty).
3. If more than one lease of different ownership is dedicated to the well, have the interests of all owners been consolidated by communitization, unitization, force-pooling, etc?

Yes No If answer is "yes," type of consolidation _____

If answer is "no," list the owners and tract descriptions which have actually been consolidated. (Use reverse side of this form if necessary.) _____

No allowable will be assigned to the well until all interests have been consolidated (by communitization, unitization, forced-pooling, or otherwise) or until a non-standard unit, eliminating such interests, has been approved by the Division



CERTIFICATION

I hereby certify that the information contained herein is true and complete to the best of my knowledge and belief.

Charles E. Verquer
Name

Charles E. Verquer
Position

Superintendent
Company

Caulkins Oil Company
Date

4-19-82

I hereby certify that the well location shown on this plat was plotted from field notes of actual surveys made by me or under my supervision, and that the same is true and correct to the best of my knowledge and belief.

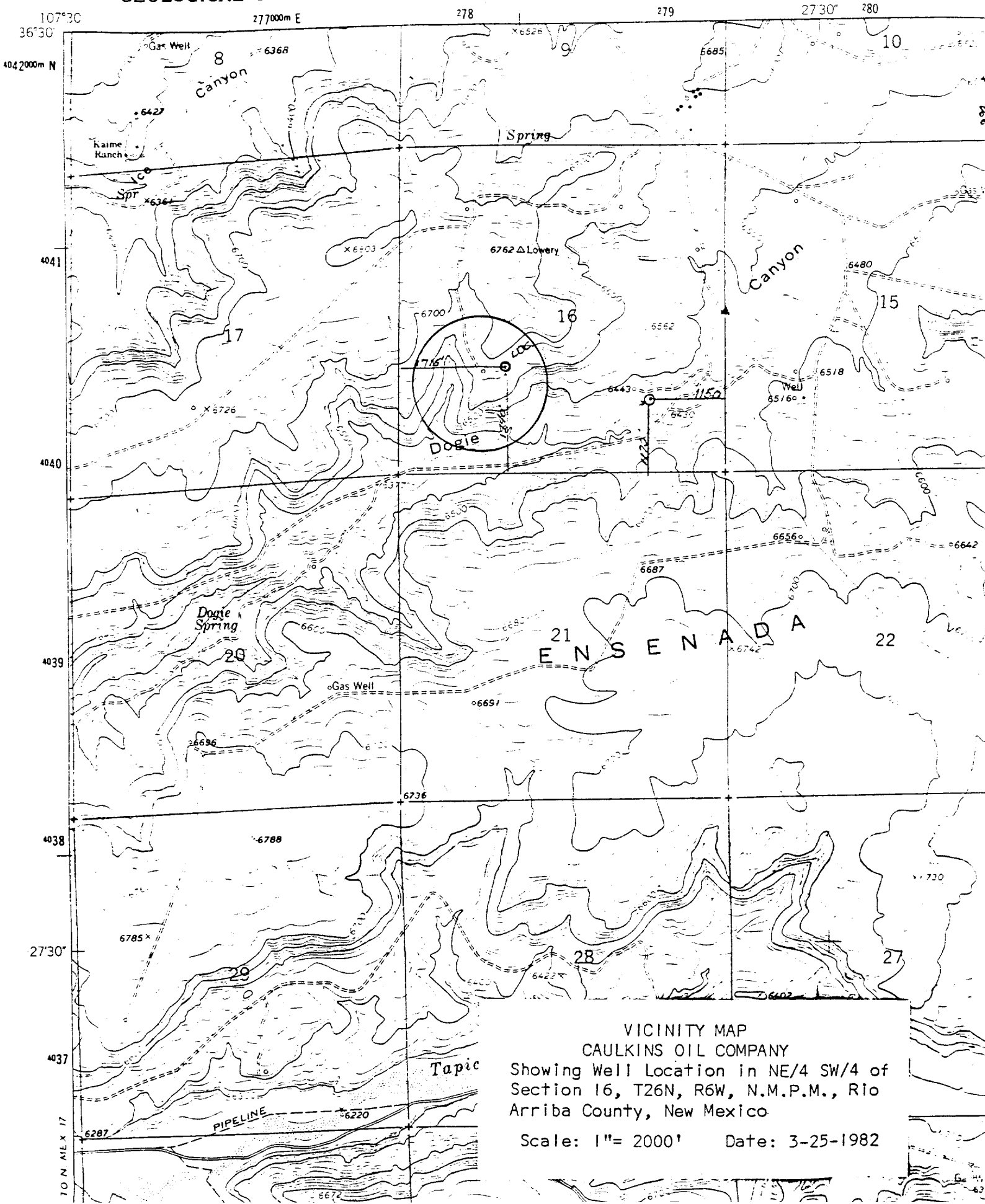
25 March 1982

Date Surveyed
Curtis C. Stocking
Registered Professional Engineer
and/or Land Surveyor
Curtis C. Stocking

Certificate No. **NM 5980 LS**

4010 (PASS)
110 500

UNITED STATES
DEPARTMENT OF THE INTERIOR
GEOLOGICAL SURVEY



VICINITY MAP
CAULKINS OIL COMPANY
Showing Well Location in NE/4 SW/4 of
Section 16, T26N, R6W, N.M.P.M., Rio
Arriba County, New Mexico
Scale: 1" = 2000' Date: 3-25-1982