

UNITED STATES
DEPARTMENT OF THE INTERIOR
GEOLOGICAL SURVEY

APPLICATION FOR PERMIT TO DRILL, DEEPEN, OR PLUG BACK

1a. TYPE OF WORK

DRILL ☒DEEPEN ☐PLUG BACK ☐

b. TYPE OF WELL

OIL
WELL ☐GAS
WELL ☒OTHER ☐SINGLE
ZONE ☒MULTIPLE
ZONE ☐

2. NAME OF OPERATOR

Amoco Production Company

3. ADDRESS OF OPERATOR

501 Airport Dr., Farmington, NM 87401

4. LOCATION OF WELL (Report location clearly and in accordance with any State requirements.)

At surface

1520' FNL x 800' FEL

At proposed prod. zone Same

14. DISTANCE IN MILES AND DIRECTION FROM NEAREST TOWN OR POST OFFICE*

Approximately 12 miles Southeast of Gobernador, NM

15. DISTANCE FROM PROPOSED*

LOCATION TO NEAREST
PROPERTY OR LEASE LINE, FT.
(Also to nearest drlg. unit line, if any)

800'

18. DISTANCE FROM PROPOSED LOCATION*

TO NEAREST WELL, DRILLING, COMPLETED,
OR APPLIED FOR, ON THIS LEASE, FT.

685'

21. ELEVATIONS (Show whether DF, RT, GR, etc.)

6844' GL

23. PROPOSED CASING AND CEMENTING PROGRAM

SIZE OF HOLE	SIZE OF CASING	WEIGHT PER FOOT	SETTING DEPTH	QUANTITY OF CEMENT
12-1/4"	9-5/8"	32.3# H-40	300'	315 sx Class B w/2% CaCl2-circ
8-3/4"	7"	20# K-55	3700'	620 sx Cl B 50:50 POZ, 6% gel, 2#
6-1/4"	4-1/2"	10.5# K-55	8030'	tuf plug/sx w/0.8% FLA. Tail in
				100 sx Cl B Neat-circ.
				4-1/2" csg- 470 sx Cl B 50:50 POZ,
				2% gel, 2# tuf plug/sx with 0.8%
				FLA. Tail in 200 sx Class B Neat.

Amoco proposes to drill the above well to further develop the Basin Dakota reserves. The well will be drilled to the surface casing point using native mud. The well will then be drilled to 3700' with a low solids nondispersed mud system, and to TD with gas. Completed design will be filed upon completion. Additional information required by NTL-6 for the application to drill and a multi-point surface use plan are attached.

The gas from this well is dedicated to Northwest Pipeline Corp, Contract 98373.

IN ABOVE SPACE DESCRIBE PROPOSED PROGRAM: If proposal is to deepen or plug back, give data on present productive zone and proposed new productive zone. If proposal is to drill or deepen directionally, give pertinent data on subsurface locations and measured and true vertical depths. Give blowout preventer program, if any.

24.

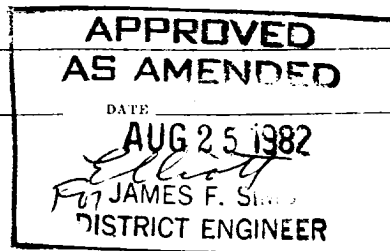
Original Signed By

SIGNED D. H. SHOEMAKERTITLE District EngineerDATE 8-19-82

(This space for Federal or State office use)

PERMIT NO. _____

APPROVAL DATE _____

APPROVED BY Jeff Edmister
CONDITIONS OF APPROVAL, IF ANY:

OIL CONSERVATION DIVISION

STATE OF NEW MEXICO
ENERGY AND MINERALS DEPARTMENTP. O. BOX 2088
SANTA FE, NEW MEXICO 87501Form C-102
Revised 10-1-78

All distances must be from the outer boundaries of the Section.

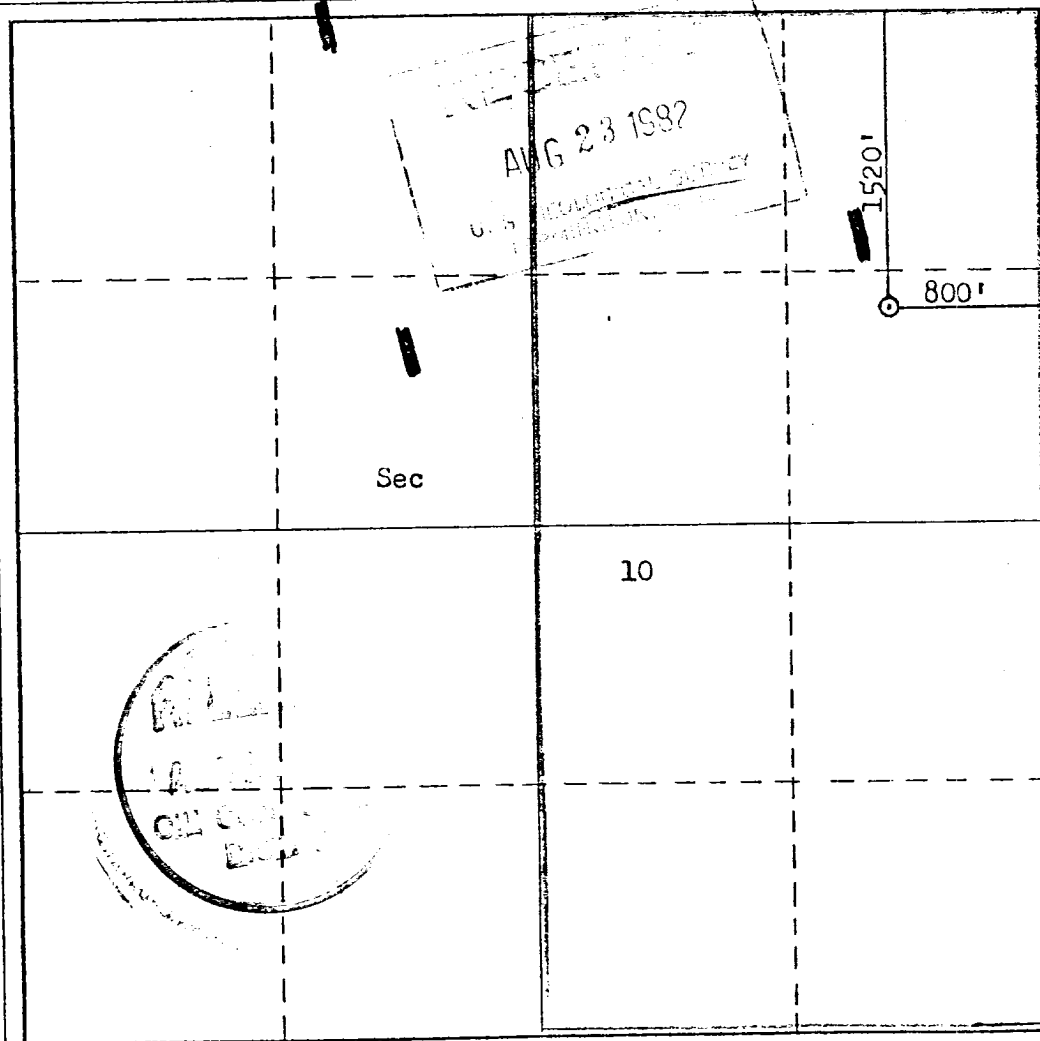
Operator Amoco Production Company			Lease Jicarilla Apache 102		Well No. 213R
Unit Letter H	Section 10	Township 26N	Range 4W	County Rio Arriba	
Actual Footage Location of Well: 1520 feet from the North line and 800 feet from the East line					
Ground Level Elev. 6844	Producing Formation Dakota		Pool Basin Dakota		Dedicated Acreage: E 320 Acres

1. Outline the acreage dedicated to the subject well by colored pencil or hachure marks on the plat below.
2. If more than one lease is dedicated to the well, outline each and identify the ownership thereof (both as to working interest and royalty).
3. If more than one lease of different ownership is dedicated to the well, have the interests of all owners been consolidated by communitization, unitization, force-pooling, etc?

☐ Yes ☐ No If answer is "yes," type of consolidation _____

If answer is "no," list the owners and tract descriptions which have actually been consolidated. (Use reverse side of this form if necessary.) _____

No allowable will be assigned to the well until all interests have been consolidated (by communitization, unitization, forced-pooling, or otherwise) or until a non-standard unit, eliminating such interests, has been approved by the Commission.



CERTIFICATION

I hereby certify that the information contained herein is true and complete to the best of my knowledge and belief.

Dale H. Shoemaker

Name
Dale H. Shoemaker

Position
District Engineer

Company
Amoco Production Company

Date
August 16, 1982

I hereby certify that the well location shown on this plat was plotted from field notes of actual surveys made by me or under my supervision, and that the same is true and correct to the best of my knowledge and belief.

Date Surveyed

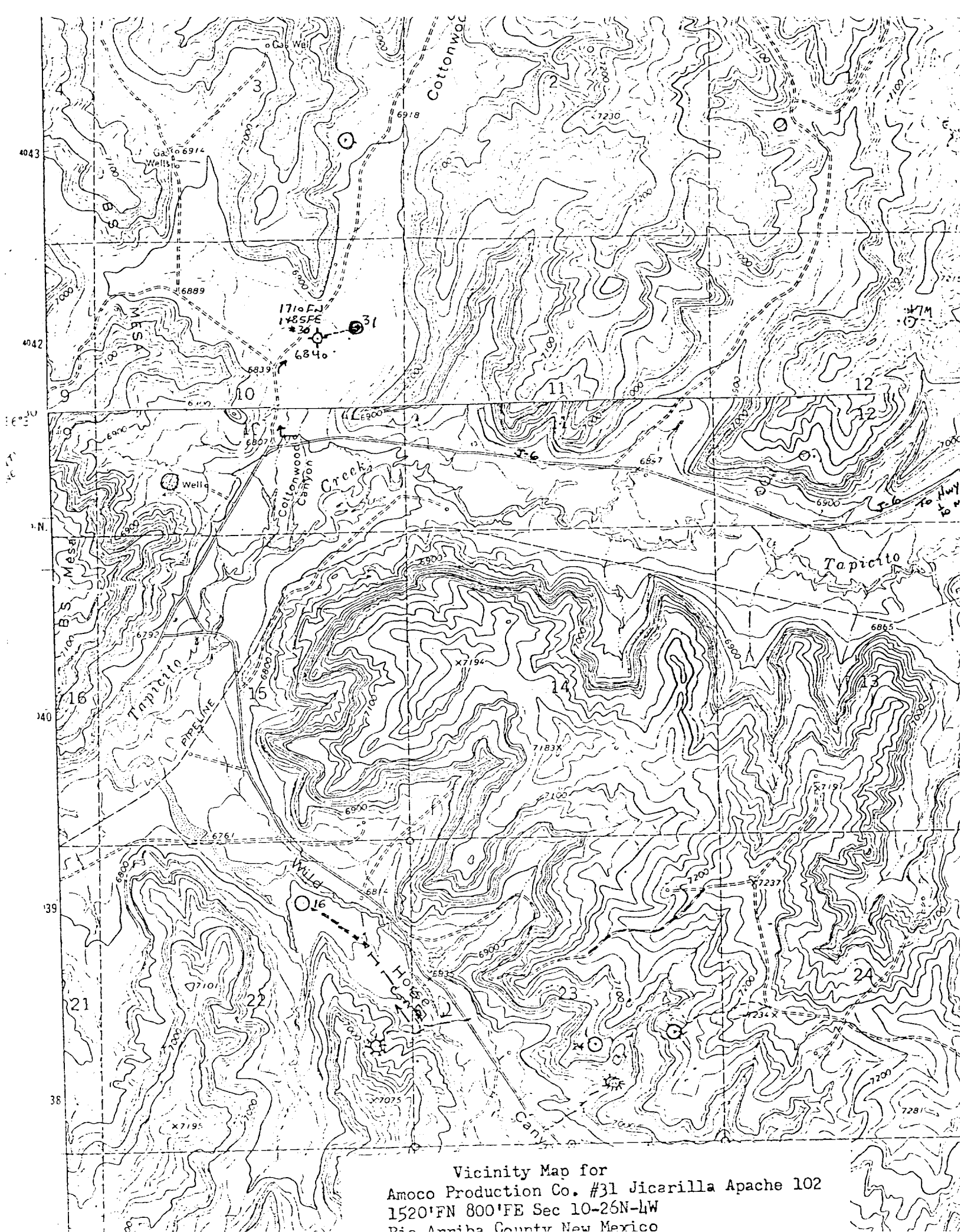
August 2, 1982

Registered Professional Engineer and/or Land Surveyor

Fred B. Kerr Jr.
Fred B. Kerr Jr.

Certificate No.

3950



Vicinity Map for
Amoco Production Co. #31 Jicarilla Apache 102
1520'FN 800'FE Sec 10-26N-4W
Rio Arriba County New Mexico