

UNITED STATES
DEPARTMENT OF THE INTERIOR
GEOLOGICAL SURVEY

SUBMIT IN DUPLICATE*

(See other instructions on reverse side)

Form approved.
Budget Bureau No. 42-R355.5.

WELL COMPLETION OR RECOMPLETION REPORT AND LOG *

1a. TYPE OF WELL: OIL WELL GAS WELL DRY Other _____

b. TYPE OF COMPLETION: NEW WELL WORK OVER DEEP-EN PLUG BACK DIFF. RESVR. Other _____

2. NAME OF OPERATOR
Caulkins Oil Company

3. ADDRESS OF OPERATOR
P.O. Box 780 Farmington, New Mexico

4. LOCATION OF WELL (Report location clearly and in accordance with any State requirements)
At surface 1120' From South- & 1520' From East
At top prod. interval reported below Same
At total depth Same

5. LEASE DESIGNATION AND SERIAL NO.
NM 03733

6. IF INDIAN, ALLOTTEE OR TRIBE NAME

7. UNIT AGREEMENT NAME

FARM OR LEASE NAME
Breech

9. WELL NO.
307-M

10. FIELD AND POOL, OR WILDCAT
Blanco Mesa Verde

11. SEC., T., R., M., OR BLOCK AND SURVEY OR AREA
Sec. 13 26 North 7 West

12. COUNTY OR PARISH
Rio Arriba

13. STATE
New Mexico

RECEIVED
OCT - 6 1983
OIL CON. DIV
DIST. 3

14. PERMIT NO. _____ DATE ISSUED _____

15. DATE SPUDDED 7-30-83 16. DATE T.D. REACHED 8-9-83 17. DATE COMPL. (Ready to prod.) 9-21-83 18. ELEVATIONS (DF, REB, RT, GR, ETC.)* 6146 GR 19. ELEV. CASINGHEAD 6888'

20. TOTAL DEPTH, MD & TVD 6888' 21. PLUG, BACK T.D., MD & TVD 6888' 22. IF MULTIPLE COMPL., HOW MANY* (4) Four 23. INTERVALS DRILLED BY → 0-6888 ROTARY TOOLS CABLE TOOLS No

24. PRODUCING INTERVAL(S), OF THIS COMPLETION—TOP, BOTTOM, NAME (MD AND TVD)* 4534' to 4756' (Mesa Verde) 25. WAS DIRECTIONAL SURVEY MADE No

26. TYPE ELECTRIC AND OTHER LOGS RUN Gamma Ray Neutron Log 27. WAS WELL CORED No

28. CASING RECORD (Report all strings set in well)

CASING SIZE	WEIGHT, LB./FT.	DEPTH SET (MD)	HOLE SIZE	CEMENTING RECORD	AMOUNT PULLED
9 5/8"	36# H-40	610'	12 1/4"	500 sacks (590 Cu.Ft.)	None
5 1/2"	15.5 & 17#	6888'	7 7/8"	1400 sacks (2122 Cu.Ft.)	None

29. LINER RECORD

SIZE	TOP (MD)	BOTTOM (MD)	SACKS CEMENT*	SCREEN (MD)

30. TUBING RECORD

SIZE	DEPTH SET (MD)	PACKER SET (MD)
1 1/4"	6682'	3337'

31. PERFORATION RECORD (Interval, size and number)

1-.42-4534	1-.42-4662	1-.42-4756
1-.42-4566	1-.42-4668	
1-.42-4580	1-.42-4692	
1-.42-4618	1-.42-4698	
1-.42-4644	1-.42-4740	

32. ACID, SHOT, FRACTURE, CEMENT SQUEEZE, ETC.

DEPTH INTERVAL (MD)	AMOUNT AND KIND OF MATERIAL USED
4534' to 4756	80,000# 20-40 sand and 1472 bbls. 20# Gel Fluid.

33.* PRODUCTION

DATE FIRST PRODUCTION 9-28-83 PRODUCTION METHOD (Flowing, gas lift, pumping—size and type of pump) Flowing WELL STATUS (Producing or shut-in) Shut-in

DATE OF TEST 9-28-83 HOURS TESTED 3 Hours CHOKE SIZE 3/4" PROD'N. FOR TEST PERIOD → OIL—BBL. GAS—MCF. 86 WATER—BBL. GAS-OIL RATIO

FLOW. TUBING PRESS. 137 CASING PRESSURE PKR CALCULATED 24-HOUR RATE → OIL—BBL. GAS—MCF. 689 WATER—BBL. OIL GRAVITY-API (CORR.)

34. DISPOSITION OF GAS (Sold, used for fuel, vented, etc.) Gas to be sold to Gas Company of New Mexico (Condensate to Shell Oil Co.) TEST WITNESSED BY

35. LIST OF ATTACHMENTS
Complete Cementing Records

36. I hereby certify that the foregoing and attached information is complete and correct as determined from all available records.

SIGNED Charles Vergara TITLE Superintendent DATE 9-29-83

ACCEPTED FOR RECORD

*(See Instructions and Spaces for Additional Data on Reverse Side)

NMOCC

FARMINGTON RESOURCE AREA
BY SMW

OCT 05 1983

INSTRUCTIONS

General: This form is designed for submitting a complete and correct well completion report and log on all types of lands and leases to either a Federal agency or a State agency, or both, pursuant to applicable Federal and/or State laws and regulations. Any necessary special instructions concerning the use of this form and the number of copies to be submitted, particularly with regard to local, area, or regional procedures and practices, either are shown below or will be issued by, or may be obtained from, the local Federal and/or State office. See instructions on items 22 and 24, and 33, below regarding separate reports for separate completions.

If not filed prior to the time this summary record is submitted, copies of all currently available logs (drillers, geologists, sample and core analysis, all types electric, etc.), formation and pressure tests, and directional surveys, should be attached hereto, to the extent required by applicable Federal and/or State laws and regulations. All attachments should be listed on this form, see item 35.

Item 4: If there are no applicable State requirements, locations on Federal or Indian land should be described in accordance with Federal requirements. Consult local State or Federal office for specific instructions.

Item 18: Indicate which elevation is used as reference (where not otherwise shown) for depth measurements given in other spaces on this form and in any attachments.

Items 22 and 24: If this well is completed for separate production from more than one interval zone (multiple completion), so state in item 22, and in item 24 show the producing interval, or intervals, top(s), bottom(s) and name(s) (if any) for only the interval reported in item 33. Submit a separate report (page) on this form, adequately identified, for each additional interval to be separately produced, showing the additional data pertinent to such interval.

Item 29: "Sacks Cement": Attached supplemental records for this well should show the details of any multiple stage cementing and the location of the cementing tool.

Item 33: Submit a separate completion report on this form for each interval to be separately produced. (See instruction for items 22 and 24 above.)

37. SUMMARY OF POROUS ZONES: SHOW ALL IMPORTANT ZONES OF POROSITY AND CONTENTS THEREOF; CORED INTERVALS; AND ALL DRILL-STEM TESTS, INCLUDING DEPTH INTERVAL TESTED, CUSHION USED, TIME TOOL OPEN, FLOWING AND SHUT-IN PRESSURES, AND RECOVERIES		38. GEOLOGIC MARKERS		
FORMATION	TOP	DESCRIPTION, CONTENTS, ETC.	MEAS. DEPTH	TRUE VERT. DEPTH
Alamo	1510	Water Sand	1510	1510
Pictured Cliffs	2274	Gas Sand	2274	2274
Chacra	3224	Gas Sand	3224	3224
Mesa Verde	4204	Gas Sand	4204	3204
Dakota	6642	Gas Sand	6642	6642
		Hole Deviation Test		
		Depth		
		615		
		1104		
		1618		
		2427		
		2887		
		3295		
		3784		
		4290		
		4803		
		5228		
		5725		
		6231		
		Degrees		
		2		
		2 1/2		
		2 3/4		
		2 3/4		
		2 1/2		
		2		
		2		
		1 1/2		
		2		
		1 3/4		
		1 3/4		
		1 1/2		

307-M

Ran 5 1/2" Production Casing as follows:

6888' to 127'	(6541')	New 5 1/2"	15.5#	ST&C	K-55 Smls Casing
127' to Surface	(127')	New 5 1/2"	17#	LT&C	K-55 Smls Casing

Stage Tools run in Casing string at 4812' and 3378'.

Cement Baskets run in Casing string at 4944' and 3393'.

Centralizers run on Casing string at following points:

6847', 6806', 6764', 6722', 6681', 6640', 6598', 6556', 6514', 6473', 6431', 6390', 6349', 6307', 4851', 4771', 4733', 4697', 4656', 3418', 3338', 3297', 2425', 2387', 2345' and 2305'.

Cemented 5 1/2" Casing in 3 Stages.

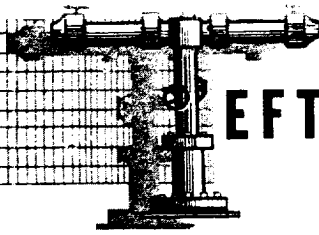
First Stage thru shoe at 6888' with 250 sacks (412.5 Cu.Ft.) 50-50 Poz, 6% Gel, 12 1/2# Gilsonite per sack followed by 100 sacks (118 Cu.Ft.) Neat Cement.
Plug down 10:45 PM 8-9-83.

Second Stage cemented thru Stage Tool set at 4812' with 150 sacks (247.5 Cu.Ft.) 50-50 Poz, 6% Gel, 12 1/2# Gilsonite per sack followed by 100 sacks (118 Cu.Ft.) Neat cement.
Plug down 11:45 PM 8-9-83.

Third Stage cemented thru Stage Tool set at 3378' with 600 sacks (990 Cu.Ft.) 50-50 Poz, 6% Gel, 12 1/2# Gilsonite per sack followed by 200 sacks (236 Cu.Ft.) Neat Cement.
Plug down 1:30 AM 8-10-83.

Circulated approx 5 bbl. slurry from both first and second stages.

Circulated no cement from third stage. Cement top 925' Temperature Survey attached.



BHP • BU • PI • DD • GWT • RFS • GOR • FL • TS

TEFTELLER, INC.

reservoir engineering data

MIDLAND, TEXAS / FARMINGTON, NEW MEXICO
GRAND JUNCTION, COLORADO

P. O. Box 5247
Midland, Texas 79704
(915) 682-5574

August 16, 1983

Caulkins Oil Company
Box 340
Bloomfield, New Mexico 87413

Attention: Mr. Charles Verquer

Subject: Temperature Survey
307-M Breech
Rio Arriba County, New Mexico
Our File No. 2-13799-TS

Gentlemen:

Attached hereto are the results of a temperature survey which was conducted on the above captioned well August 10, 1983.

The data presented are in graphical form.

It has been our pleasure to have conducted this service for you. If we may be of further assistance, please call us at any time.

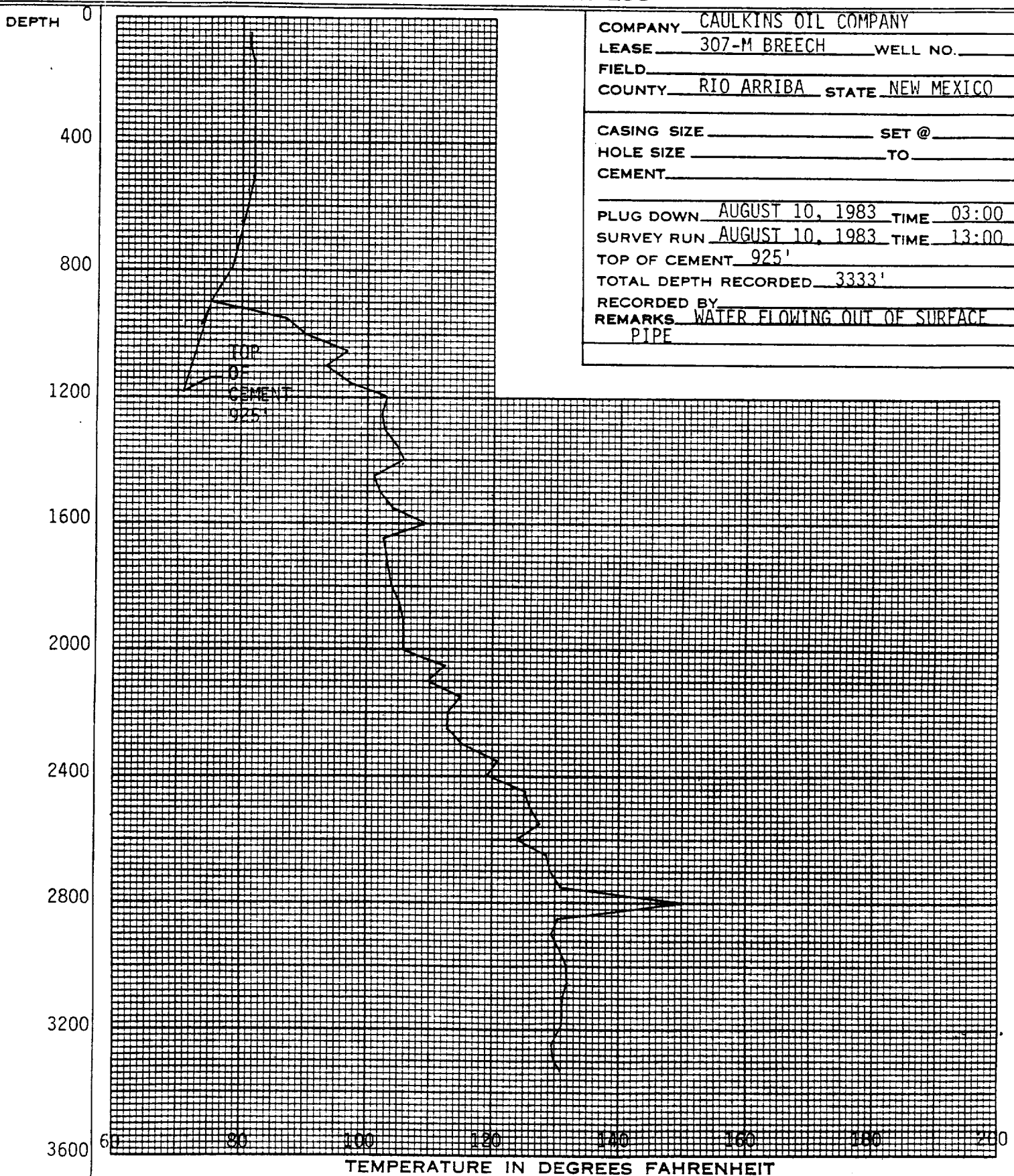
Respectfully submitted,

TEFTELLER, INC.

G. W. Taylor
Operations Manager

GWT/ar

TEMPERATURE SURVEY LOG



COMPANY CAULKINS OIL COMPANY
 LEASE 307-M BREECH WELL NO. _____
 FIELD _____
 COUNTY RIO ARRIBA STATE NEW MEXICO
 CASING SIZE _____ SET @ _____
 HOLE SIZE _____ TO _____
 CEMENT _____
 PLUG DOWN AUGUST 10, 1983 TIME 03:00
 SURVEY RUN AUGUST 10, 1983 TIME 13:00
 TOP OF CEMENT 925'
 TOTAL DEPTH RECORDED 3333'
 RECORDED BY _____
 REMARKS WATER FLOWING OUT OF SURFACE
PIPE