

UNITED STATES
DEPARTMENT OF THE INTERIOR
GEOLOGICAL SURVEY

APPLICATION FOR PERMIT TO DRILL, DEEPEN, OR PLUG BACK

1a. TYPE OF WORK
DRILL ☒ DEEPEN ☐ PLUG BACK ☐

b. TYPE OF WELL
OIL WELL ☐ GAS WELL ☒ OTHER ☐ SINGLE ZONE ☐ MULTIPLE ZONE ☒

2. NAME OF OPERATOR
Union Texas Petroleum Corporation

3. ADDRESS OF OPERATOR
P.O. Box 1290, Farmington, New Mexico 87499

4. LOCATION OF WELL (Report location clearly and in accordance with any State requirements.)
At surface 790' FNL; 790' FWL
At proposed prod. zone Same as above

14. DISTANCE IN MILES AND DIRECTION FROM NEAREST TOWN OR POST OFFICE*
7.5 miles NW of Ojito, New Mexico

15. DISTANCE FROM PROPOSED*
LOCATION TO NEAREST PROPERTY OR LEASE LINE, FT.
(Also to nearest drlg. unit line, if any) 790'
790'

16. NO. OF ACRES IN LEASE
2571.58

17. NO. OF ACRES ASSIGNED TO THIS WELL
W/2 320.00 325.48

18. DISTANCE FROM PROPOSED LOCATION*
TO NEAREST WELL, DRILLING, COMPLETED, OR APPLIED FOR, ON THIS LEASE, FT. 3040'

19. PROPOSED DEPTH
7700

20. ROTARY OR CABLE TOOLS
Rotary

21. ELEVATIONS (Show whether DF, RT, GR, etc.)
6646 GR

22. APPROX. DATE WORK WILL START*
May 10, 1984

23. GENERAL REQUIREMENTS FOR CEMENTING PROGRAM
This action is subject to administrative appeal pursuant to 30 CFR 290.

SIZE OF HOLE	SIZE OF CASING	WEIGHT PER FOOT	SETTING DEPTH	QUANTITY OF CEMENT
13-3/4"	New 10-3/4"H40	32.70	300' (+)	240 Cu.ft. CL "B" 2% CaCl ₂ Circ.
9-7/8"	New 7" K55	23.00	5720' (+)	See Below
6-1/8"	New 4-1/2"K55	11.60	5520'-7700' (+)	See Below

We desire to drill this well as shown on the above proposed program. After surface csg. is set, the pipe will be tested. Drill out w/ a starch base, permaloid, non-dispersed mud to intermediate T.D. of approx. 5720'. Log the hole, run csg. to T.D. and cmt. in two stages w/ a D.V. tool at approx. 3300'. 1st stage cmt: 20Lbs gelled water pre-flush-20lbs zone lock-approx. 800 cu.ft. of 50-50 POZ w/4% gel and 3250# of Gilsonite. Tail in w/approx. 150 cu.ft. of CL "B" w/2% CaCl₂. 2nd stage: 20lbs water pre-flush w/zone lock. Cmt. w/approx. 1230 cu.ft. of 65-35-12 w/7375# of Gilsonite followed by 120 cu.ft. of CL "B" w/2% CaCl₂ to be circulated to surface. Drill out D.V. tool. Drill out shoe. Drill to T.D. using Natural Gas as the circulating medium. Log the well. Run csg. to T.D. and hang off in the intermediate csg. at approx. 5520'. Perf. & frac the Dakota zone and set a bridge plug above the Dakota. Perf. and frac the Mesaverde zone. Clean the Mesaverde zone up. Drill the bridge plug. Clean the Dakota zone up. Run tbg. (2-3/8" J55) and set with a production packer above the Dakota zone. Run a second string of 2-3/8" J55 tbg. and land in the Mesaverde zone. Nipple down the well head. Test the production packer. Test the Dakota and Mesaverde zones. Connect to a Gathering System.

24. If proposal is to deepen or plug back, give data on present productive zone and proposed new productive zone. If proposal is to drill or deepen directionally, give pertinent data on subsurface locations and measured and true vertical depths. Give blowout preventer program, if any.

SIGNED: Rudy D. Motto TITLE: Area Operation Manager
(This space for Federal or State office use)

PERMIT NO. _____ APPROVAL DATE _____

APPROVED BY: _____ TITLE: _____
CONDITIONS OF APPROVAL, IF ANY:

RECEIVED

MAR 29 1984
OIL CON. DIV.
DIST. 3

NMOCC

APPROVED
AS AMENDED
MAR 27 1984
DATE
AREA MANAGER
FARMINGTON RESOURCE AREA

APPROVED

CINCINNATI 25

1911 K S 1410

RECEIVED

1911 K S 1410

All distances must be from the outer boundaries of the Section.

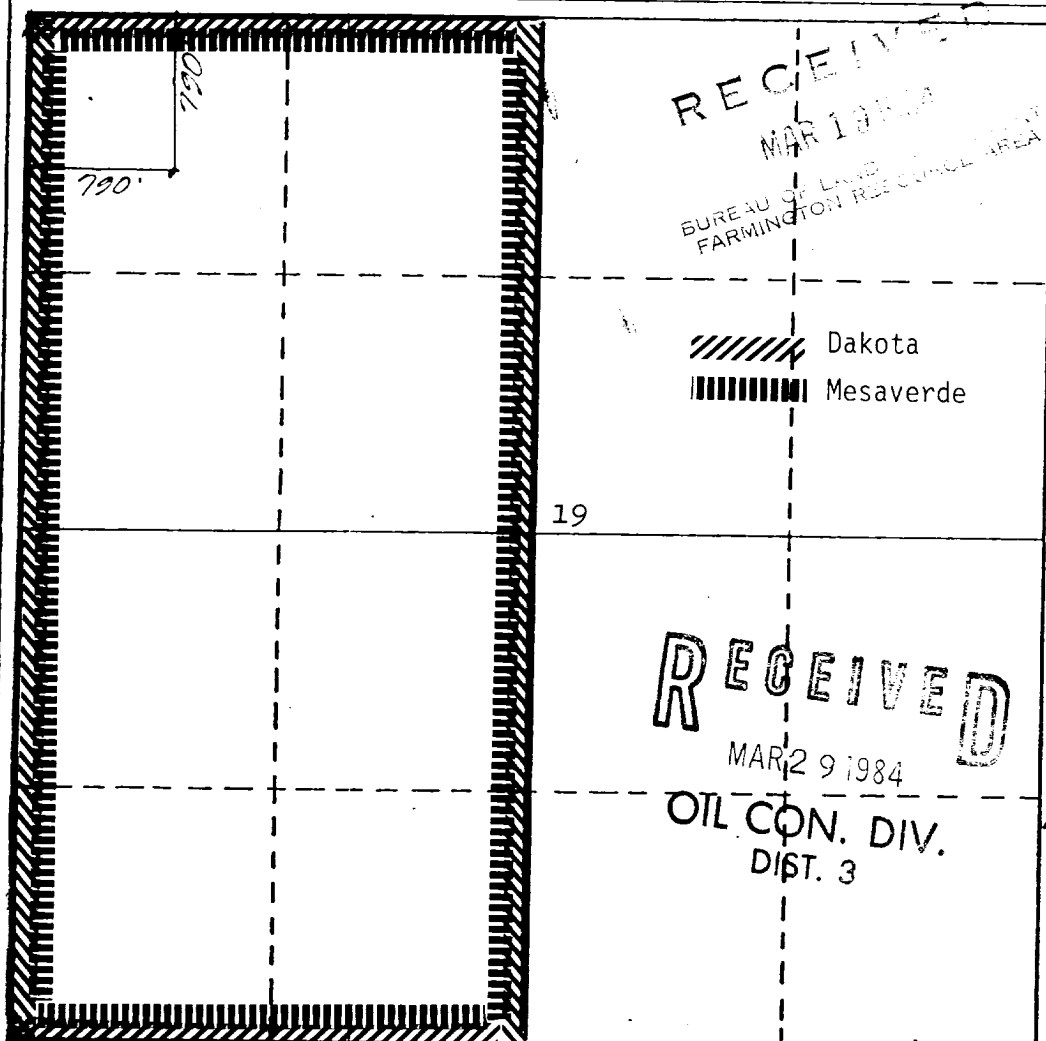
Operator UNION TEXAS PETROLEUM CORPORATION			Lease JICARILLA "H"		Well No. 7E
Unit Letter D	Section 19	Township 26 NORTH	Range 4 WEST	County RIO ARriba	
Actual Footage Location of Well: 790 feet from the NORTH line and 790 feet from the WEST line					
Ground Level Elev. 6646	Producing Formation Dakota -- Mesaverde		Pool Basin -- Blanco		Dedicated Acreage: W1/2 320.00 Acres

1. Outline the acreage dedicated to the subject well by colored pencil or hatchure marks on the plat below.
2. If more than one lease is dedicated to the well, outline each and identify the ownership thereof (both as to working interest and royalty).
3. If more than one lease of different ownership is dedicated to the well, have the interests of all owners been consolidated by communitization, unitization, force-pooling, etc?

☐ Yes ☒ No If answer is "yes," type of consolidation _____

If answer is "no," list the owners and tract descriptions which have actually been consolidated. (Use reverse side of this form if necessary.) Southland Royalty Company

No allowable will be assigned to the well until all interests have been consolidated (by communitization, unitization, forced-pooling, or otherwise) or until a non-standard unit, eliminating such interests, has been approved by the Division



CERTIFICATION

I hereby certify that the information contained herein is true and complete to the best of my knowledge and belief.

Name

Rudy D. Motto

Position

Area Operations Manager

Company

Union Texas Petroleum Corp.

Date

September 26, 1983

I hereby certify that the well location shown on this plat was plotted from field notes of the well location made by me or under my supervision, and that the same is true and correct to the best of my knowledge and belief.

Date Surveyed

September 8, 1983

Registered Professional Engineer and/or Land Surveyor

Michael Daly

Certificate No.

5992

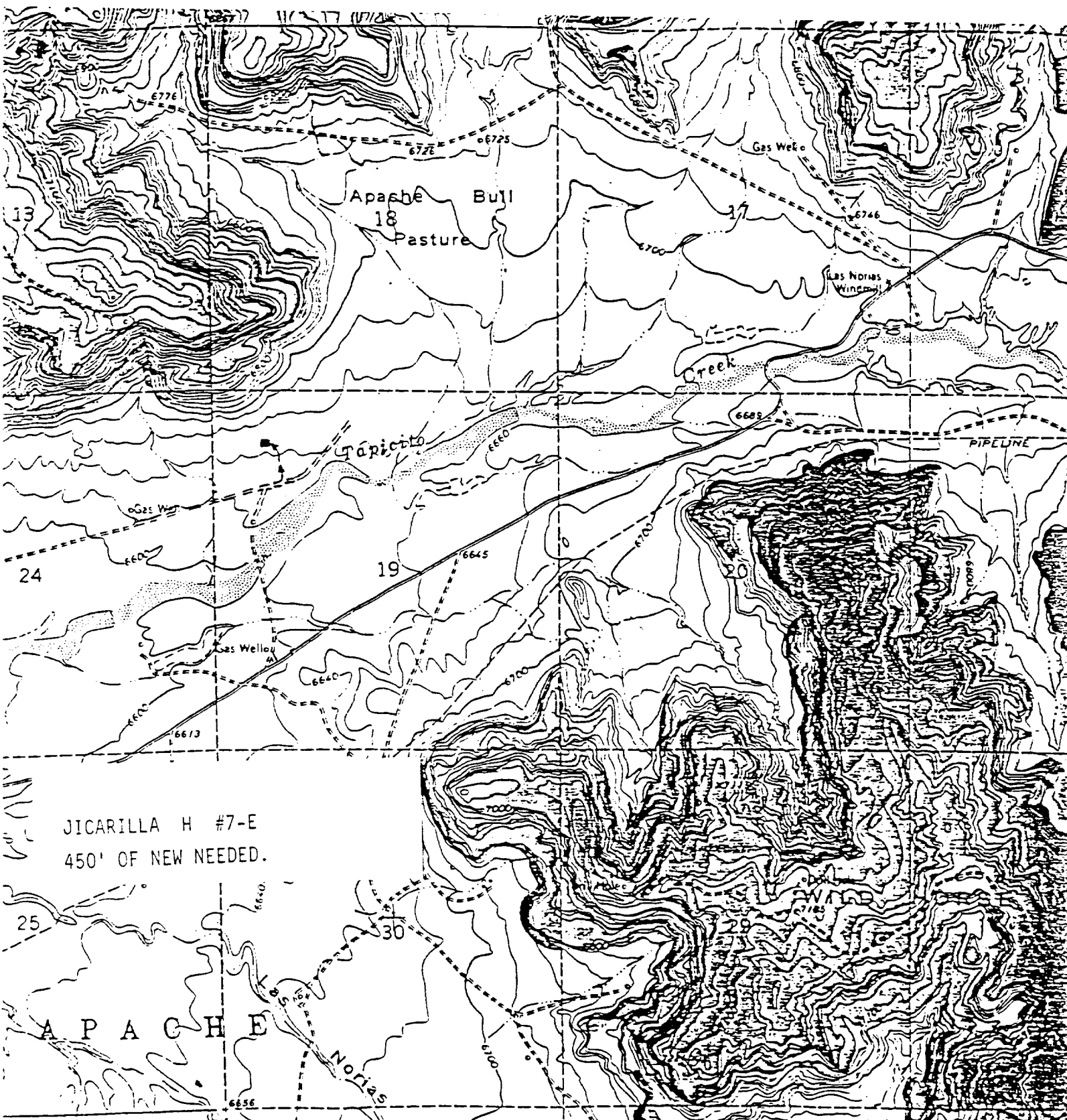
0 330 660 990 1320 1650 1980 2310 2640 2000 1500 1000 500 0

JICARILLA H # 7-E

790' FNL & 790' FWL

SEC. 19, T26N, R4W

RIO ARriba COUNTY, N.M.



JICARILLA H #7-E
450' OF NEW NEEDED.

A P A C H E