

OFFICE OF THE SECRETARY
MINERALS MANAGEMENT SERVICE
Drawer 600
Farmington, New Mexico 87401

March 17, 1982

Consolidated Oil & Gas, Inc.
P.O. Box 2038
Farmington, New Mexico 87401


Gentlemen:

Reference is made to your Application for Permit to Drill (APD) well No. 1E Tribal "C", SW¹/₄ sec. 6, T. 26 N., R. 3 W., Rio Arriba County, New Mexico, Jicarilla Contract 97.

The subject APD is hereby rescinded and returned due to drilling operations not being commenced within a six month extension period following the original approval date.

You are required to request surface rehabilitation instructions from this office if construction activities occurred on the referenced drill site.

Sincerely yours,


for James F. Sims
District Oil & Gas Supervisor

Enclosure

cc: NMOCC

UNITED STATES
DEPARTMENT OF THE INTERIOR
GEOLOGICAL SURVEY

30-039-22507

5. LEASE DESIGNATION AND SERIAL NO.

Jic. Cont. 97

6. IF INDIAN, ALLOTTEE OR TRIBE NAME

Jicarilla Apache

7. UNIT AGREEMENT NAME

8. FARM OR LEASE NAME

Tribal "C"

9. WELL NO.

1-E

10. FIELD AND POOL, OR WILDCAT

Jicarilla Area Basin Dak

11. SEC., T., R., M., OR BLK. AND SURVEY OR AREA

Sec. 6, T26N, R3W

12. COUNTY OR PARISH 13. STATE

Rio Arriba New Mexico

APPLICATION FOR PERMIT TO DRILL, DEEPEN, OR PLUG BACK

1a. TYPE OF WORK

DRILL

DEEPEN

PLUG BACK

b. TYPE OF WELL

OIL WELL

GAS WELL

OTHER

SINGLE ZONE

MULTIPLE ZONE

2. NAME OF OPERATOR

Consolidated Oil & Gas, Inc.

3. ADDRESS OF OPERATOR

1860 Lincoln Street, Denver, Colorado 80295

4. LOCATION OF WELL (Report location clearly and in accordance with any State requirements.*)

At surface

1520' FNL, 1235' FWL

At proposed prod. zone Same

14. DISTANCE IN MILES AND DIRECTION FROM NEAREST TOWN OR POST OFFICE*

35 miles northwest of Lindrith, New Mexico

15. DISTANCE FROM PROPOSED* LOCATION TO NEAREST PROPERTY OR LEASE LINE, FT.

1235'

16. NO. OF ACRES IN LEASE

320² 2503.09

17. NO. OF ACRES ASSIGNED TO THIS WELL

165 320

18. DISTANCE FROM PROPOSED LOCATION* TO NEAREST WELL, DRILLING, COMPLETED, OR APPLIED FOR, ON THIS LEASE, FT.

760'

19. PROPOSED DEPTH

8200'

20. ROTARY OR CABLE TOOLS

Rotary

21. ELEVATIONS (Show whether DF, RT, GR, etc.)

7012' Ground, ungraded

22. APPROX. DATE WORK WILL START*

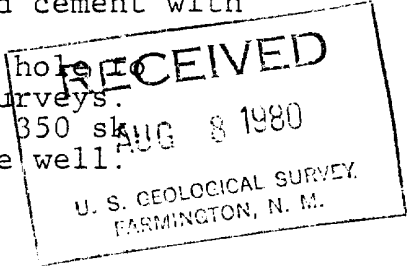
23.

PROPOSED CASING AND CEMENTING PROGRAM

SIZE OF HOLE	SIZE OF CASING	WEIGHT PER FOOT	SETTING DEPTH	QUANTITY OF CEMENT
15-1/2"	10-3/4"	40.5#	300'	300 sk.
9-7/8"	7-5/8"	26.4#	4035'	250 sk.
6-3/4"	5-1/2"	15.5 & 17#	8200'	350 sk.

"GENERAL RECOMMENDATIONS"

1. Drill 15-1/2" hole to 300'. Run and cement 10-3/4" casing to surface.
2. Install casinghead and BOP. After 12 hrs., test casing, casinghead and BOP and Kelly cock to 700 psi.
3. Drill 9-7/8" hole to 4035'. Run 7-5/8" casing and cement with 250 sk.
4. Change circulating medium to air and drill 6-3/4" hole to estimated total depth of 8200'. Run electrical surveys.
5. Run 5-1/2" liner from 3825'-8200' and cement with 350 sk.
6. Perforate Dakota formation, stimulate and complete well.



IN ABOVE SPACE DESCRIBE PROPOSED PROGRAM: If proposal is to deepen or plug back, give data on present productive zone and proposed new productive zone. If proposal is to drill or deepen directionally, give pertinent data on subsurface locations and measured and true vertical depths. Give blowout preventer program, if any.

24.

SIGNED *John E. Wey*

TITLE Div. Operations Engineer DATE Aug. 5, 1980

(This space for Federal or State office use)

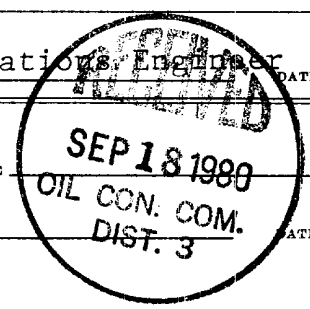
PERMIT NO.

APPROVAL DATE

APPROVED BY *Bruce W. Hamdy*

TITLE

CONDITIONS OF APPROVAL, IF ANY:



*See Instructions On Reverse Side

[Handwritten scribbles]

ok 3rd party ok

All distances must be from the outer boundaries of the Section.

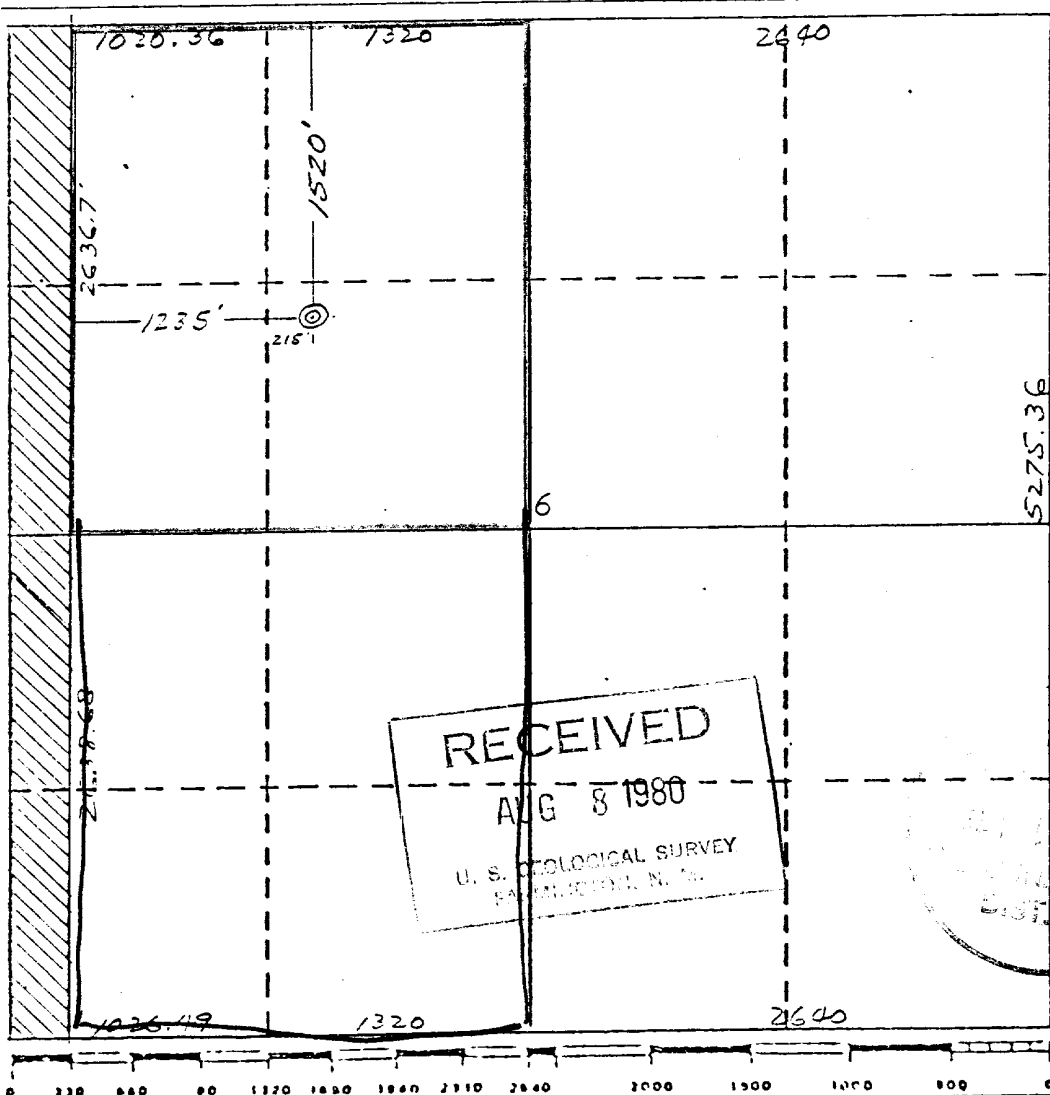
Operator CONSOLIDATED OIL & GAS, INC.		Lease TRIBAL C		Well No. 1-E
Unit Letter F	Section 6	Township 26 NORTH	Range 3 WEST	County RIO ARRIBA
Actual Location of Well: 1520 feet from the NORTH line and 1235 feet from the WEST line				
Ground Level Elev. 7012	Producing Formation Dakota	Pool Jicarilla Area Basin	Dedicated Acreage 160320 Acres	

1. Outline the acreage dedicated to the subject well by colored pencil or hatchure marks on the plat below.
2. If more than one lease is dedicated to the well, outline each and identify the ownership thereof (both as to working interest and royalty).
3. If more than one lease of different ownership is dedicated to the well, have the interests of all owners been consolidated by communitization, unitization, force-pooling, etc?

Yes No If answer is "yes," type of consolidation _____

If answer is "no," list the owners and tract descriptions which have actually been consolidated. (Use reverse side of this form if necessary.) _____

No allowable will be assigned to the well until all interests have been consolidated (by communitization, unitization, forced-pooling, or otherwise) or until a non-standard unit, eliminating such interests, has been approved by the Division.



CERTIFICATION	
I hereby certify that the information contained herein is true and complete to the best of my knowledge and belief.	
Name	<i>John E. Wey</i> John E. Wey
Position	Division Operations Engineer
Company	Consolidated Oil & Gas, Inc.
Date	Aug. 5, 1980
I hereby certify that the well location shown on this plat was plotted from notes of actual survey made by me under my supervision, and that the same is true and correct to the best of my knowledge and belief.	
Date Surveyed	June 16, 1980
Registered Professional Engineer and Land Surveyor	<i>James P. Leese</i> James P. Leese
Certificate No.	1463

DEVELOPMENT PLAN FOR SURFACE USE

TRIBAL "C" 1-E, "F"

Sec. 6, T26N, R3W
Rio Arriba County, New Mexico

Consolidated Oil & Gas, Inc. - Operator

1. Existing Roads

See enclosed topographic map (Attachment "A") which shows existing improved and unimproved roads.

2. Planned Access Roads

There is an existing road next to the location (See Attachment "A")

3. Location of Existing Wells

See enclosed lease map (Attachment "B").

4. Location of Existing and/or Proposed Facilities

See enclosed lease map (Attachment "B") showing location of wells and facilities operated by Consolidated Oil & Gas, Inc. If production is encountered, the tank battery and other required producing equipment will be located per attached completion plat. (Attachment "C").

5. Location and Type of Water Supply

Water for drilling will be trucked or purchased locally, if available, and transported via irrigation pipe.

6. Source of Construction Materials

No additional construction material will be required.

7. Methods of Handling Waste Disposal

All waste material will be contained by earthen and steel pits. Earthen pits will be subsequently backfilled and buried. A portable chemical toilet will be furnished for drilling personnel.

8. Ancillary Facilities

No separate drill campsites are proposed.

9. Wellsite Layout

The drilling site location will be graded and will approximate 200' x 250' with natural drainage to the south. Care will be taken while grading to control erosion (See Attachment "D").

10. Plans for Restoration of Surface

- A. Following drilling and completion operations, all equipment and material not needed for operations will be removed. Pits containing fluid will be fenced until filled, with any additional pits filled and the location cleaned of all trash and junk.
- B. After abandonment, any special rehabilitation and/or re-vegetation requirements (reseed with seed mixture No. 2) will be complied with and accomplished as expeditiously as possible. All pits should be filled and leveled within 90 days after abandonment.

11. Other Information

The location is on a gently rolling slope, with sandy clay topsoil and vegetation consisting of rabbit brush, larkspur, smooth brome, squirreltail, Indian rice grass, needle and thread and western wheat grass. No residences or structures are nearby. The surface rights are owned by the Jicarilla Apache Tribe. If, during operations, any historic or pre-historic ruin, monument or site, or any object of antiquity is discovered, work will be suspended and the discovery will be reported to the appropriate regulatory agency.

12. Operator's Representative

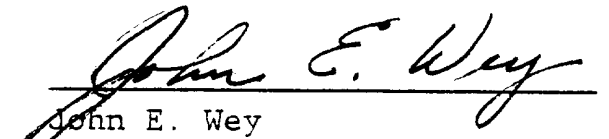
Consolidated Oil & Gas, Inc.
John E. Wey
Division Operations Engineer
1860 Lincoln Street
Denver, Colorado 80295
Phone (303) 861-5252

13. Certification

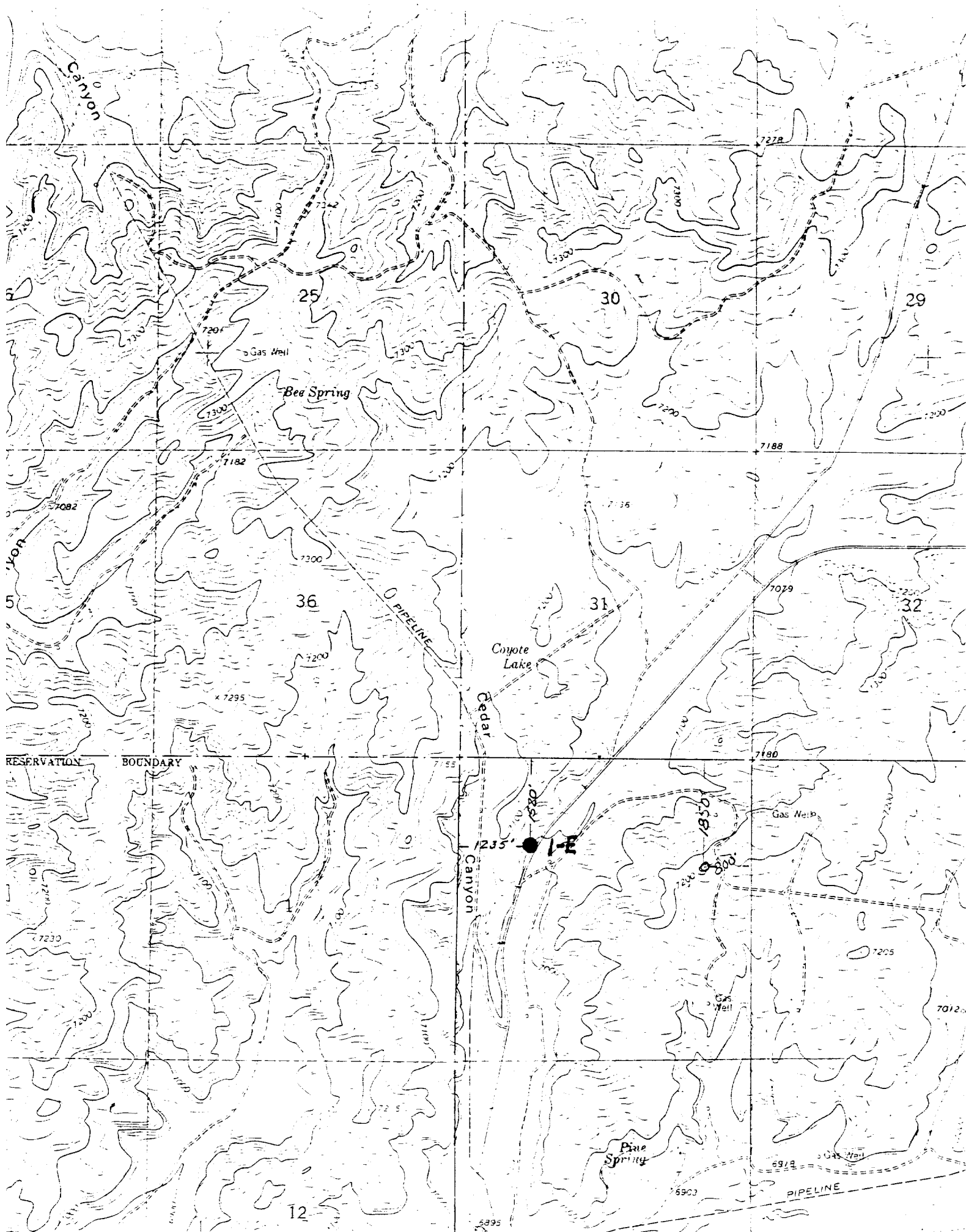
I hereby certify that I, or persons under my direct supervision, have inspected the proposed drillsite and access route; that I am familiar with the conditions which presently exist; that the statements made in this plan are, to the best of my knowledge, true and correct; and that the work associated with the operations proposed herein will be performed by Consolidated Oil & Gas, Inc. and its contractors and sub-contractors in conformity with this plan and the terms and conditions under which it is approved.

August 5, 1980

Date

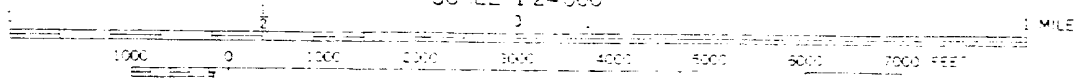


John E. Wey
Division Operations Engineer



302 12'30" R. 1 W. 27 MI TO N. ME. SCHMITZ RANCH, R. 3 W. 4556 1' NW 305 10' 306

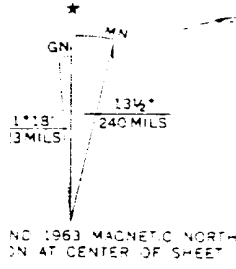
SCALE 1:24000



Consolidated Oil & Gas, Inc.
 Tribal C #1-E
 NW $\frac{1}{4}$ Sec. 6, T26, R3W, N.M.P.M.
 Rio Arriba County, New Mexico

ATTACHMENT "A"

THIS MAP COMPLIES WITH NATIONAL MAP ACCURACY STANDARDS
 FOR SALE BY U. S. GEOLOGICAL SURVEY, DENVER, COLORADO 80225, OR RESTON, VIRGINIA 22092
 A FOLDER DESCRIBING TOPOGRAPHIC MAPS AND SYMBOLS IS AVAILABLE ON REQUEST



NO. 1963 MAGNETIC NORTH ON AT CENTER OF SHEET

HAMPLIN 7-25
PC and MV)

284
410
448
392

316
404
238
TA

HAMPLIN 8-25
PC and DK)

36

31

32

TRIBAL "C" 1-6
(PC and DK)
1-E
514
1052
618
TRIBAL "C" 2-6
(PC and MV)
1089
482
400
828

655
596
1290
621
TRIBAL "C" 3-6
PC and MV
TRIBAL "C" 4-6
(PC and DK)
693
536
414
632

298
370
P&A
TRIBAL "C" 5-5
PC and MV
TRIBAL "C" 6-5
(PC and DK)
925
489
623
404

5
TRIBAL "C" 8-5
(PC and DK)
173
152
115
P&A

12

8

1102
561
402
273
TRIBAL "C" 9-7
(PC and MV)
TRIBAL "C" 10-7
(PC and DK)
669
371
312
359

7
TRIBAL "C" 11-8
(PC and MV)
1533
885
228
407
TRIBAL "C" 12-8
(PC and DK)
1840
835
541
239

8
PC
PC
DK

13

18

17

548
344
421
431
MV
DK

JENNEY 1-13
(MV and DK)

6
DK
6
DK

ATTACHMENT "B"
DK
TRIBAL "C" 1-E
NWNW Sec. 6, T26N, R3W
Rio Arriba County, New Mexico
LEASE MAP OF WELLS AND FACILITIES
Consolidated Oil & Gas, Inc.
DK

PC
MV
PC
MV

DK
PC
PC
DK
PC
MV

24

19

20

PC

6
DK

PC
MV

DK
PC
MV

PC

PC
DK
PC

ATTACHMENT "C"

DEVELOPMENT PLAN FOR SURFACE USE

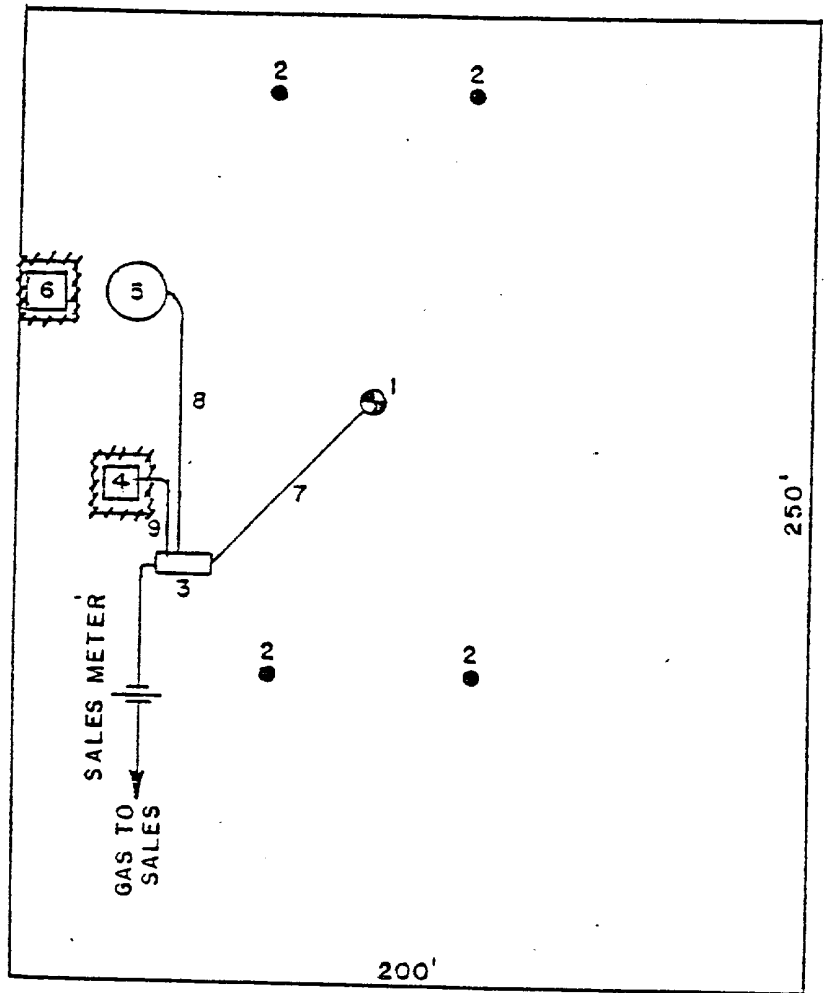
CONSOLIDATED OIL & GAS, INC. - OPERATOR

TRIBAL "C" No. 1-E

NWNW Sec. 6, T26N, R3W
Rio Arriba County, New Mexico

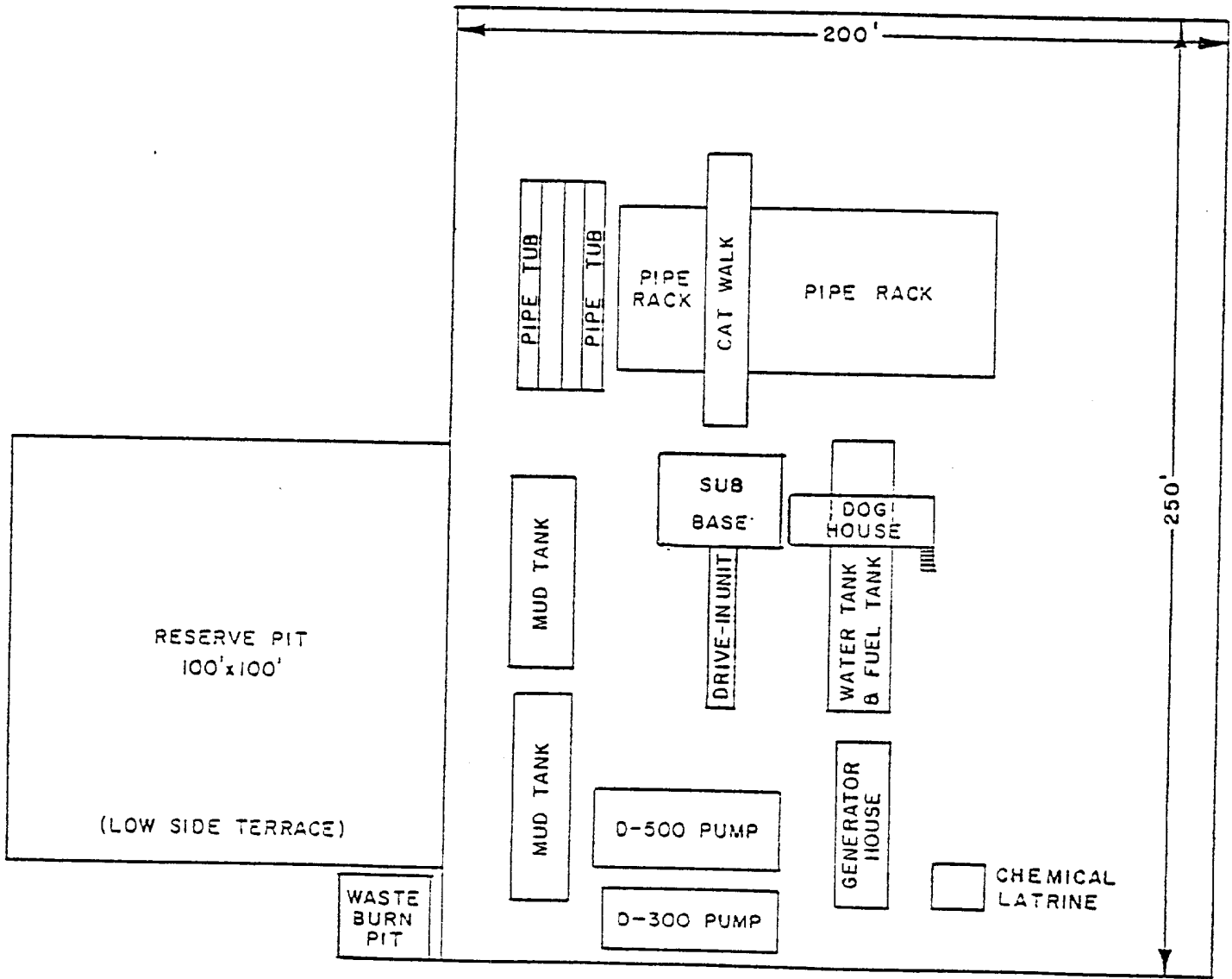
PROPOSED PRODUCING FACILITIES

- 1. Well
- 2. Dead Men
- 3. Prod. Unit
- 4. Water Pit
- 5. 300 bbl. Oil Tank
- 6. Water Pit
- 7. 2" Buried flow line
- 8. 1½" Oil Line
- 9. 1½" Water Line



1" equals 50'

Fence - - - - -



ATTACHMENT "D"

DEVELOPMENT PLAN FOR SURFACE USE

CONSOLIDATED OIL & GAS, INC. - OPERATOR

TRIBAL "C" No. 1-E

NW NW Sec. 6, T26N, R3W
 Rio Arriba County, New Mexico

DILLING EQUIPMENT LAYOUT

9. Casing Setting Depth and Cementing:

Surface casing will be set at 300'. Cement will be circulated to surface with approximately 250 sk. Class "B" neat cement containing 2% CaCl₂.

Cementing Prognosis:

Intermediate casing will be run to 4035'. The casing will be cemented as follows:

150 sk. 65/35 Pozmix with 12% gel, tailed in with 100 sk. neat with 2% CaCl₂

5-1/2" production liner will be cemented from 8200'-3825' with 350 sk. of 50/50 Pozmix, 10 lb/sk. of Gilsonite, 0.40% FLA.

Note: Exact volume of cement to be determined after running Caliper log.

10. Pressure Control Equipment: See attached diagram "A"

11. Circulating Media: 0-300' fresh water spud mud; 300-4000' fresh water, low solid mud with following properties:

Viscosity 32-28 sec., water loss 20-6 cc, weight 8.5-9.0 ppg with heavier weights if required by well conditions. From 4035'-T.D. air or gas as circulating medium.

12. Testing, Logging and Coring Programs:

- a. Open hole logs will be run prior to running production casing.
- b. Coring is not planned.

13. Abnormal Pressure or Temperature and Hydrogen Sulfide Gas:

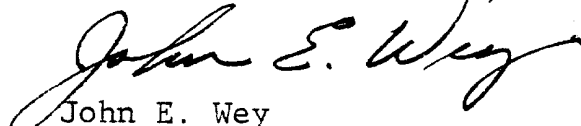
We do not anticipate abnormal pressure, temperature or hydrogen sulfide gas; however, a remote control blowout preventer as shown on attached diagram "A" will be installed.

14. Anticipated Starting Date: Drilling operations should start within 60 days after obtaining approval.

15. Other Facets of the Proposed Operations: None

Yours very truly,

CONSOLIDATED OIL & GAS, INC.



John E. Wey
Division Operations Engineer
Rocky Mountain Division

JEW:lt
Attach

DIAGRAM "A"

U.S.G.S. APPLICATION FOR PERMIT
TO DRILL

CONSOLIDATED OIL & GAS, INC - OPERATC

TRIBAL "C" No. 1-E

Sec. 6, T26N, R3W

Rio Arriba County, New Mexico

Schematic of Pressure Control

Equipment

