

UNITED STATES
DEPARTMENT OF THE INTERIOR
GEOLOGICAL SURVEY

APPLICATION FOR PERMIT TO DRILL, DEEPEN, OR PLUG BACK

1a. TYPE OF WORK

DRILL ☒DEEPEN ☐PLUG BACK ☐

b. TYPE OF WELL

OIL
WELL ☒GAS
WELL ☒

OTHER

SINGLE
ZONE ☐MULTIPLE
ZONE ☒

2. NAME OF OPERATOR

Curtis J. Little

3. ADDRESS OF OPERATOR

P.O. Box 1258
Farmington, NM 87499

4. LOCATION OF WELL (Report location clearly and in accordance with any State requirements.)*

At surface

1750' FNL & 790' FEL

At proposed prod. zone

Same

14. DISTANCE IN MILES AND DIRECTION FROM NEAREST TOWN OR POST OFFICE*

13 miles northwest of Counselors, New Mexico

15. DISTANCE FROM PROPOSED*

LOCATION TO NEAREST
PROPERTY OR LEASE LINE, FT.
(Also to nearest drlg. unit line, if any)

790'

16. NO. OF ACRES IN LEASE

1040

17. NO. OF ACRES ASSIGNED

TO THIS WELL
160/-E/32018. DISTANCE FROM PROPOSED LOCATION*
TO NEAREST WELL, DRILLING, COMPLETED,
OR APPLIED FOR, ON THIS LEASE, FT.

19. PROPOSED DEPTH

7050'

20. ROTARY OR CABLE TOOLS

Rotary

21. ELEVATIONS (Show whether DF, RT, GR, etc.)

6632' G.L.

DRILLING OPERATIONS AUTHORIZED AND

SUBJECT TO OIL CON. DIV. APPROVAL

"GENERAL REQUIREMENTS"

PROPOSED CASING AND CEMENTING PROGRAM

22. APPROX. DATE WORK WILL START*

As soon as approved

23.

This action is subject to administrative
appeal pursuant to 30 CFR 290.

SIZE OF HOLE	SIZE OF CASING	WEIGHT PER FOOT	SETTING DEPTH	QUANTITY OF CEMENT
12 1/4"	8 5/8"	24#	200'	148 cu.ft. - cir. to surface
7 7/8"	5 1/2"	23#	7050'	1596 cu.ft. - to cover Ojo Alamo

Propose to drill with mud, run mechanical logs, selectively test, perforate,
and sand-water fracture the Gallup and Dakota formations.

The gas is dedicated to El Paso Natural Gas Company.

RECEIVED
NOV 8 1984
BUREAU OF LAND MANAGEMENT
FARMINGTON RESOURCE AREA

DEC 19 1984
OIL CON. DIV. I
DIST. 3

IN ABOVE SPACE DESCRIBE PROPOSED PROGRAM: If proposal is to deepen or plug back, give data on present productive zone and proposed new productive zone. If proposal is to drill or deepen directionally, give pertinent data on subsurface locations and measured and true vertical depths. Give blowout preventer program, if any.

24. Curtis J. Little

SIGNED

TITLE

Operator

(This space for Federal or State office use)

PERMIT NO.

APPROVAL DATE

APPROVED BY

TITLE

CONDITIONS OF APPROVAL, IF ANY:

Hold 104 for operation
name change

ch 2

NMOCC

*See Instructions On Reverse Side

APPROVED 19 1984

AS AMENDED

DEC 17 1984

DATE

/s/ J. Stan MCKEE

AREA MANAGER
FARMINGTON RESOURCE AREA

OIL CONSERVATION DIVISION

STATE OF NEW MEXICO

OIL AND MINERALS DEPARTMENT

P. O. BOX 2044

SANTA FE, NEW MEXICO 87501

Form C-107

Revised 10-1-78

All distances must be from the outer boundaries of the Section.

Operator CURTIS J. LITTLE		Lease WARREN Federal		Well No. 3E	
Unit Letter H	Section 26	Township 25N	Range 6W	County Rio Arriba	
Actual Footage Location of Wells: 1750 feet from the North line and 790 feet from the East line					
Ground Level Elev. 6632	Producing Formation Dakota and Gallup		Pool Devil's Fork Basin Dakota & Gallup		Dedicated Acreage 320 Acres

1. Outline the acreage dedicated to the subject well by colored pencil or hatchure marks on the plat below.
2. If more than one lease is dedicated to the well, outline each and identify the ownership thereof (both as to working interest and royalty).
3. If more than one lease of different ownership is dedicated to the well, have the interests of all owners been consolidated by communitization, unitization, force-pooling, etc?

☐ Yes ☐ No If answer is "yes," type of consolidation _____

If answer is "no," list the owners and tract descriptions which have actually been consolidated. (Use reverse side of this form if necessary.) _____

No allowable will be assigned to the well until all interests have been consolidated (by communitization, unitization, forced-pooling, or otherwise) or until a non-standard unit, eliminating such interests, has been approved by the Commission.

RECEIVED

NOV 21 1984

BUREAU OF LAND MANAGEMENT
SANTA FE, NEW MEXICO

Sec.

26

RECEIVED
DEC 19 1984
OIL CON. DIV.
DIST. 3

CERTIFICATION

I hereby certify that the information contained herein is true and complete to the best of my knowledge and belief.

Name
Curtis J. Little

Position
Operator

Company
Curtis J. Little

Date
November 21, 1984

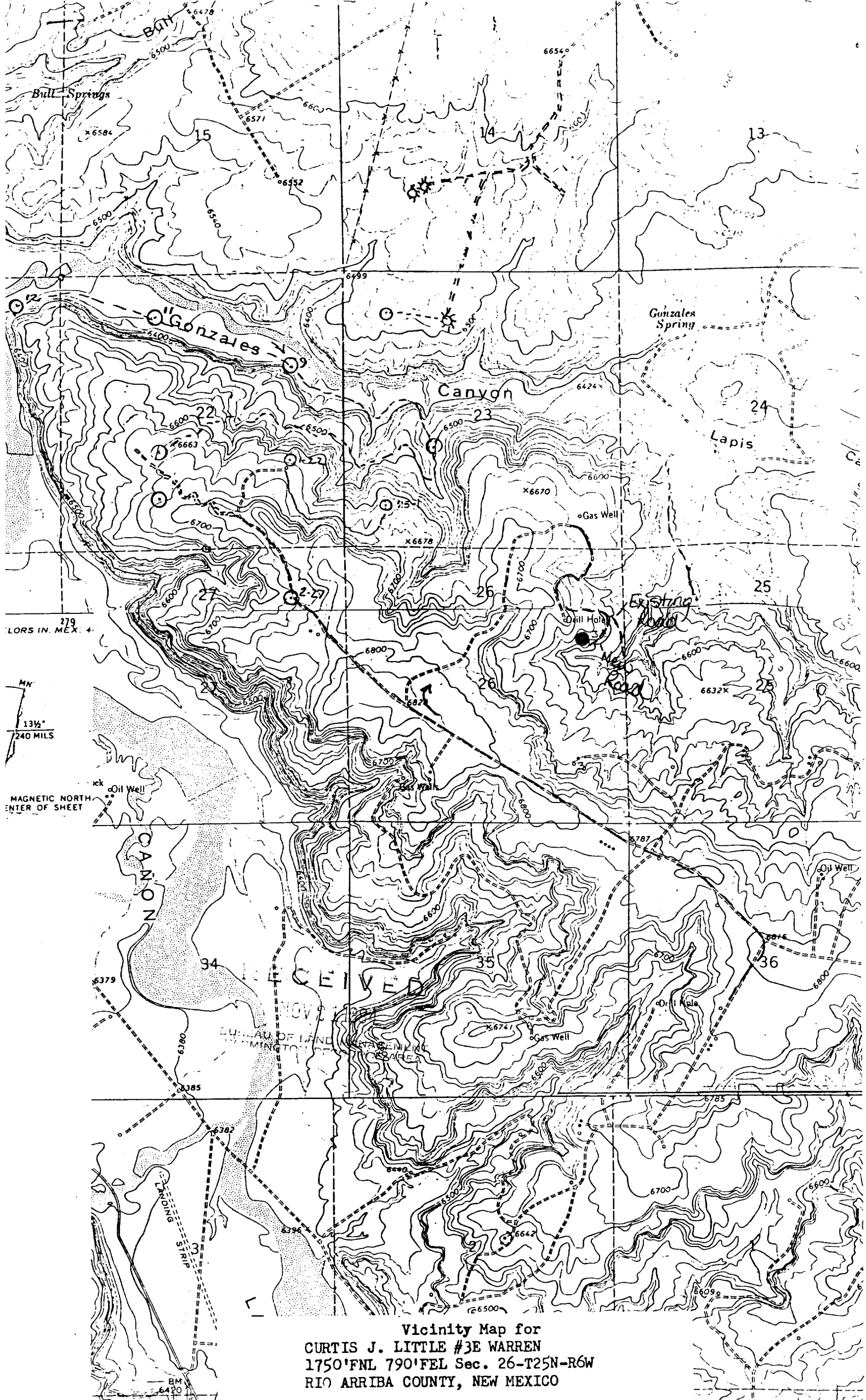
I hereby certify that the well location shown on this plat was plotted from field notes of actual surveys made by me or under my supervision, and that the same is true and correct to the best of my knowledge and belief.

Date Surveyed
November 11, 1984

Registered Professional Engineer
and Land Surveyor

Fred B. Kerr Jr.

Certificate No. **1111**



Vicinity Map for
CURTIS J. LITTLE #3E WARREN
1750'FNL 790'FEL Sec. 26-T25N-R6W
RIO ARRIBA COUNTY, NEW MEXICO