

UNITED STATES
DEPARTMENT OF THE INTERIOR
BUREAU OF LAND MANAGEMENT

APPLICATION FOR PERMIT TO DRILL, DEEPEN, OR PLUG BACK

1A. TYPE OF WORK

DRILL ☒

DEEPEN ☐

PLUG BACK ☐

B. TYPE OF WELL

OIL
WELL ☐

GAS
WELL ☒

OTHER

SINGLE
ZONE ☐

MULTIPLE
ZONE ☒

2. NAME OF OPERATOR

Union Texas Petroleum

3. ADDRESS OF OPERATOR

375 U.S. Highway 64, Farmington New Mexico 87401

4. LOCATION OF WELL (Report location clearly and in accordance with any State requirements.)

At surface

840' FSL & 2020' FEL

At proposed prod. zone

Same as above

14. DISTANCE IN MILES AND DIRECTION FROM NEAREST TOWN OR POST OFFICE

22 miles NW of Ojito, New Mexico

15. DISTANCE FROM PROPOSED*

LOCATION TO NEAREST
PROPERTY OR LEASE LINE, FT.
(Also to nearest drilg. unit line, if any)

840' from lease

840' from DU

16. NO. OF ACRES IN LEASE

2560

17. NO. OF ACRES ASSIGNED

TO THIS WELL

SE/4 159.86

S/2 319.7 acres

19. DISTANCE FROM PROPOSED LOCATION*
TO NEAREST WELL, DRILLING, COMPLETED,
OR APPLIED FOR, ON THIS LEASE, FT.

2189'

19. PROPOSED DEPTH

7920'

20. ROTARY OR CABLE TOOLS

Rotary

21. ELEVATIONS (Show whether DF, RT, GR, etc.)

6788 G.L. (graded)

DRILLING OPERATIONS AUTHORIZED ARE
SUBJECT TO COMPLIANCE WITH ATTACHED

22. APPROX. DATE WORK WILL START*

June 25, 1987

23.

"GENERAL PROPOSED CASING" AND CEMENTING PROGRAM

This action is subject to technical and
procedural review, approval, and appeal
of the BLM.

SIZE OF HOLE	SIZE OF CASING	WEIGHT PER FOOT	SETTING DEPTH	QUANTITY OF CEMENT
12-1/4"	9-5/8"	32.3#	300'	175 sxs (207 cu.ft.)
8-3/4"	7"	23.0#	3690'	350 sxs (836 cu.ft.)
6-1/4"	4-1/2" liner	10.5	3490'-7920'	535 sxs (840 cu.ft.)

Union Texas Petroleum wishes to advise we intend to drill 12-1/4" hole with mud to 300+ and set 9-5/8" 32.3#, H-40, ST&C csg. to 300'+, cementing to surface with 175 sxs (207 cu.ft.) C1 "B" with 2% CaCl2 and 1/4# flocele/sk. Wait on cement for 12 hrs.

Nipple up, test BOP. Drill 8-3/4" hole with mud out of surface to 3690'. Set 7", 23.0#, K-55, ST&C intermediate csg. to 3690', cementing to surface with 250 sxs (718 cu.ft.) 65-35 POZ with 12% gel and 12-1/4# gilsonite/sk, tailed by 100 sxs (118 cu.ft) C1 "B" with 2% CaCl2

Drill 6-1/4" hole with air out of intermediate to a TD of 7920'. Log well, run 4-1/2", 10.5#, K-55, ST&C liner from 3490' to 7920'. Cement liner into intermediate csg with 535 sxs (840 cu.ft.) 50-50 POZ with 4% gel, 6-1/4# gilsonite/sk, and 10# salt/sk.

Following perforation and treatment of the Mesaverde, Gallup and Dakota formations, standard production equipment will be installed. The well will be tied into Gas Company of NM. A cathodic protection groundbed will be drilled on location. AC power will be plowed from a meter drop at the main road, along the new access road to location.

IN ABOVE SPACE DESCRIBE PROPOSED PROGRAM: If proposal is to deepen or plug back, give data on present productive zone and proposed new productive zone. If proposal is to drill or deepen directionally, give pertinent data on subsurface locations and measured and true vertical depths. Give blowout preventer program, if any.

24.

SIGNED

Robert C. Frank

TITLE

Permit Coordinator

DATE

APPROVED 1987

(This space for Federal or State office use)

PERMIT NO.

APPROVAL DATE

JUN - 8 1987

JUN 04 1987

TITLE

/s/ J. Stan McKee

AREA MANAGER

*See Instructions On Reverse Side

"Approval of this action does
not warrant that the applicant
holds legal or equitable rights
or title to this lease."

1001 - makes it a crime for any person knowingly and willfully to make to any department or agency of the

NEW MEXICO OIL CONSERVATION COMMISSION WELL LOCATION AND ACREAGE DEDICATION PLAT

Form C-101
Supersedes C.
Effective 1-1-81

All distances must be from the corner hereafter of the Section.

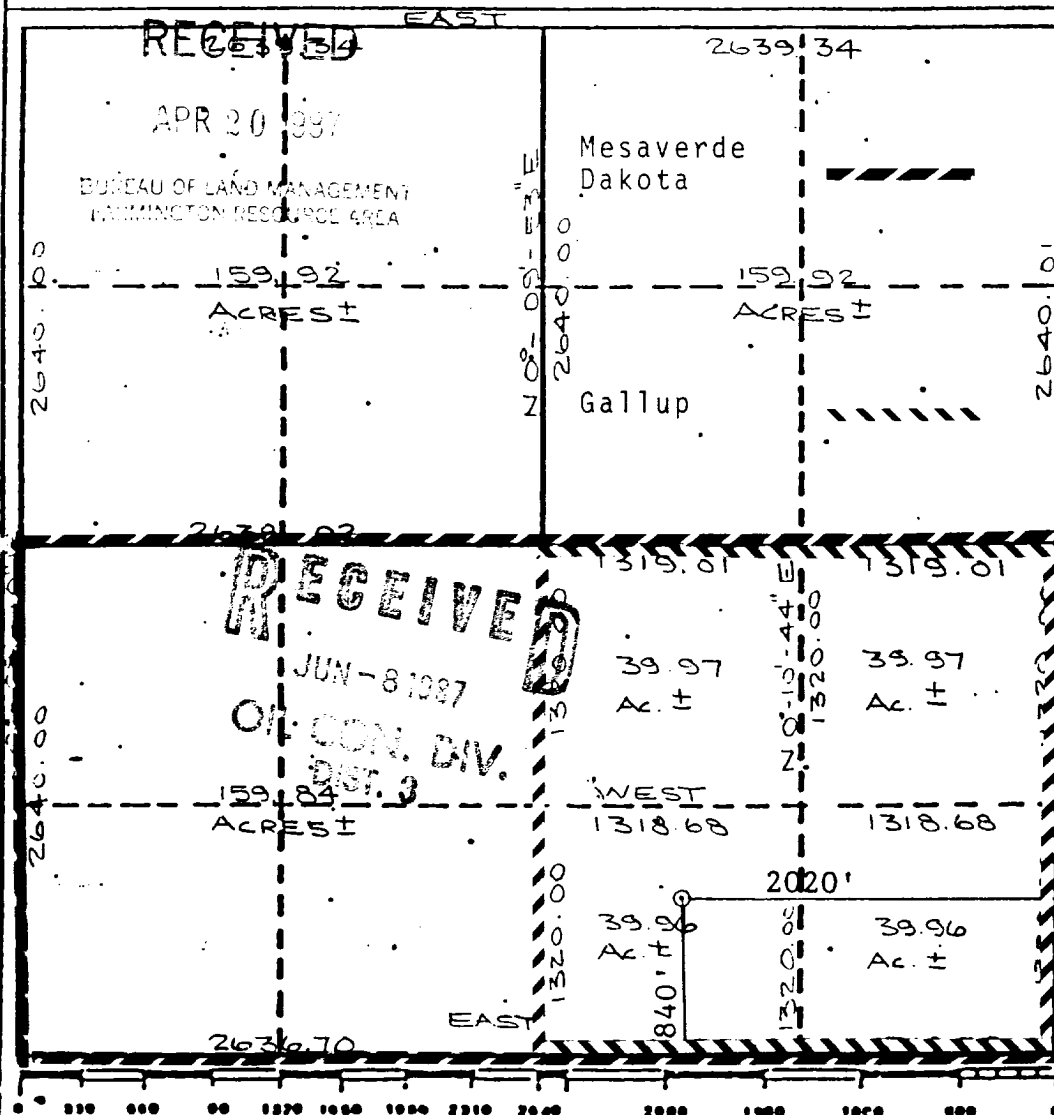
Operator UNION TEXAS PETROLEUM			Lease JICARILLA "H"		Well No. 6-M
Unit Letter 0	Section 20	Township 26 N	Range 4 W	County Rio Arriba	
Actual Footage Location of Well 840 feet from the South line and 2020 feet from the East line Gallup					159.86
Ground Level Elev. 6788	Producing Formation Gallup Mesaverde-Dakota-		Pool Blanco-Basin-Wild Horse	Dedicated Acreage 319.8 MV/DK <small>Ac.</small>	

1. Outline the acreage dedicated to the subject well by colored pencil or hatchure marks on the plat below.
2. If more than one lease is dedicated to the well, outline each and identify the ownership thereof (both as to work interest and royalty).
3. If more than one lease of different ownership is dedicated to the well, have the interests of all owners been consolidated by communitization, unitization, force-pooling, etc?

☐ Yes ☐ No If answer is "yes," type of consolidation _____

If answer is "no," list the owners and tract descriptions which have actually been consolidated. (Use reverse side this form if necessary.) _____

No allowable will be assigned to the well until all interests have been consolidated (by communitization, unitization, forced-pooling, or otherwise) or until a non-standard unit, eliminating such interests, has been approved by the Commission.



CERTIFICATION

I hereby certify that the information contained herein is true and complete to the best of my knowledge and belief.

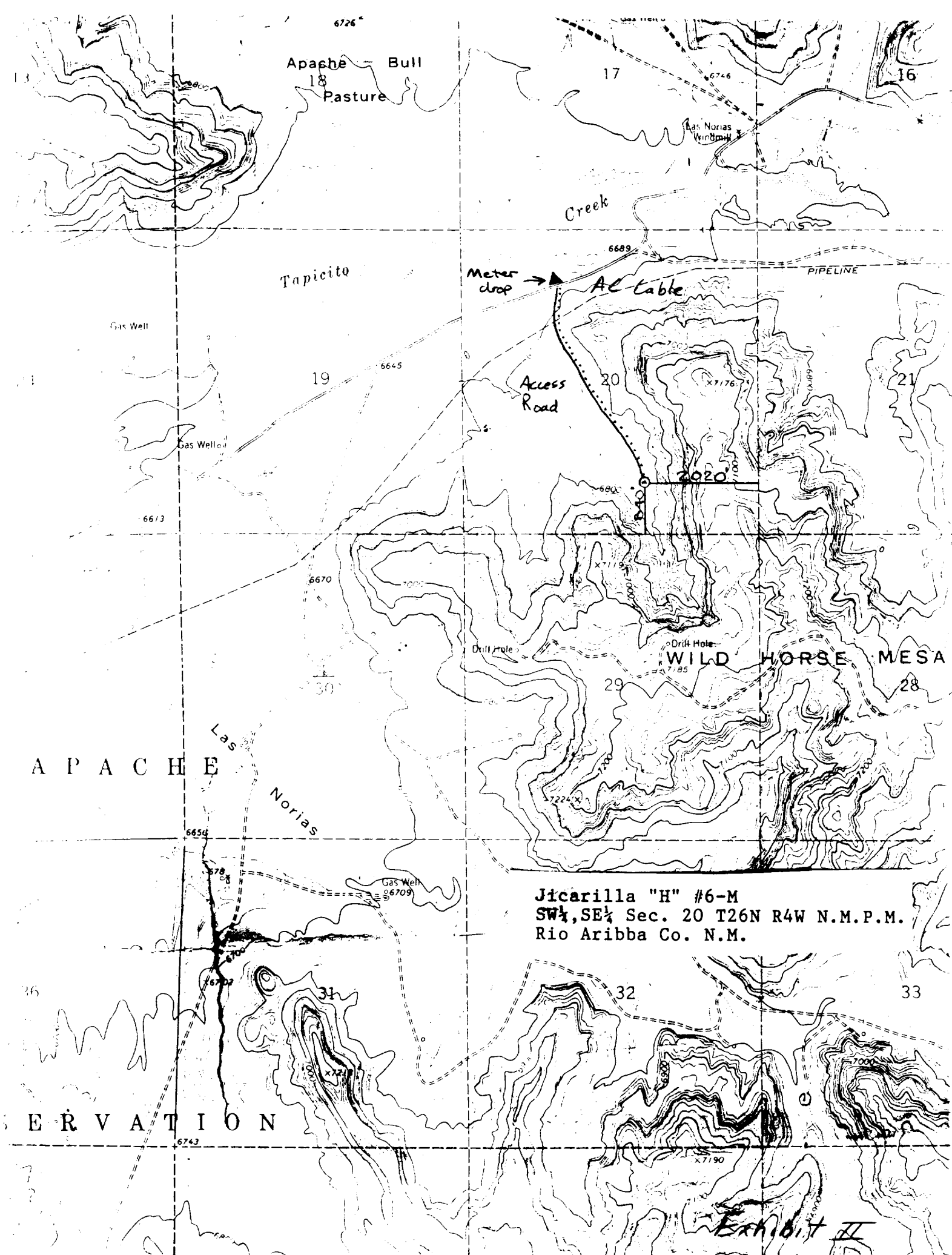
Robert C. Frank

Name
Robert C. Frank
Position
Permit Coordinator
Company
Union Texas Petroleum
Date
April 15, 1987

I hereby certify that the well location shown on this plat is correct from the notes of actual survey made by me under the supervision of the Commission and that the same is true and correct to the best of my knowledge and belief.

Cecil B. Tullis
Date Surveyed
March 21, 1987
Registered Professional Engineer and/or Land Surveyor

Cecil B. Tullis
Certificate No.
9672



Jicarilla "H" #6-M
SW $\frac{1}{4}$, SE $\frac{1}{4}$ Sec. 20 T26N R4W N.M.P.M.
Rio Aribba Co. N.M.

Exhibit II