

District I
1625 N. French Dr., Hobbs, NM 88240
District II
1301 W. Grand Avenue, Artesia, NM 88210
District III
1000 Rio Brazos Rd., Aztec, NM 87410
District IV
1220 S. St. Francis Dr., Santa Fe, NM 87505

State of New Mexico
Energy, Minerals & Natural Resources Department
OIL CONSERVATION DIVISION
1220 South St. Francis Dr.
Santa Fe, NM 87505

Form C-102
Revised August 15, 2000
Submit to Appropriate District Office
State Lease - 4 Copies
Fee Lease - 3 Copies

☐ AMENDED REPORT

WELL LOCATION AND ACREAGE DEDICATION PLAT

¹ API Number 30-039-24172	² Pool Code 85920	³ Pool Name Tapacito Pictured Cliffs
⁴ Property Code 024550	⁵ Property Name Skip Hixon	⁶ Well Number 1
⁷ OGRID No. 160560	⁸ Operator Name Rio Chama Petroleum, Inc.	⁹ Elevation 7390

¹⁰ Surface Location

UL or lot no. J	Section 27	Township 26N	Range 3W	Lot Idn	Feet from the 1740	North/South line South	Feet from the 2090	East/West line East	County Rio Arriba
--------------------	---------------	-----------------	-------------	---------	-----------------------	---------------------------	-----------------------	------------------------	----------------------

¹¹ Bottom Hole Location If Different From Surface

UL or lot no.	Section	Township	Range	Lot Idn	Feet from the	North/South line	Feet from the	East/West line	County
---------------	---------	----------	-------	---------	---------------	------------------	---------------	----------------	--------

¹² Dedicated Acres 160.00	¹³ Joint or Infill	¹⁴ Consolidation Code	¹⁵ Order No.
---	-------------------------------	----------------------------------	-------------------------

NO ALLOWABLE WILL BE ASSIGNED TO THIS COMPLETION UNTIL ALL INTERESTS HAVE BEEN CONSOLIDATED OR A NON-STANDARD UNIT HAS BEEN APPROVED BY THE DIVISION

¹⁶					¹⁷ OPERATOR CERTIFICATION <i>I hereby certify that the information contained herein is true and complete to the best of my knowledge and belief.</i> Signature: <u>Jeffrey W. Hudson</u> Printed Name: Jeffrey W. Hudson Title: Senior Engineer Date: February 4, 2002
					¹⁸ SURVEYOR CERTIFICATION <i>I hereby certify that the well location shown on this plat was plotted from field notes of actual surveys made by me or under my supervision, and that the same is true and correct to the best of my belief.</i> Date of Survey: Signature and Seal of Professional Surveyor:
					Certificate Number

Well: Skip Hixon #1

KB: 7402'

Location: J 27-26N-3W

GL: 7390'

Date: 12/01

Date:

History:

12/10/87 Spud

9 5/8", 36# J55 csg. c. 322' w/ 210 sx

12/23/87 TD 8525

12/25/87 5 1/2", 17# K55 c. 8524' w/ DV c. 6212
cmtd w/ 540 + 550 sx

PBTD 8422'

2/11/88 Perf 7638-60

FEB 2002

2/16/88 Acid 4500 gal 15% HCL
FRAC 127 mgal / 120m # 20/40 Brady

3/31/88 Tstd 1B0, 2BW, 22 mcf @ 100psi FTP

Set BP @ 7350'

4/6/88 Perf 7080-7340'

4/8/88 Acid 6000 gals 15% HCL
FRAC 256 mgal / 104m # 20/40 Brady sol

2 7/8" tbg c. 7340' w/ Anchor c. 6424'
RAW Pump (1 3/4" RHAC) and rods (7/8 + 3/4)

4/26/88 IP 3580, 327 mcf @ 110# FTP

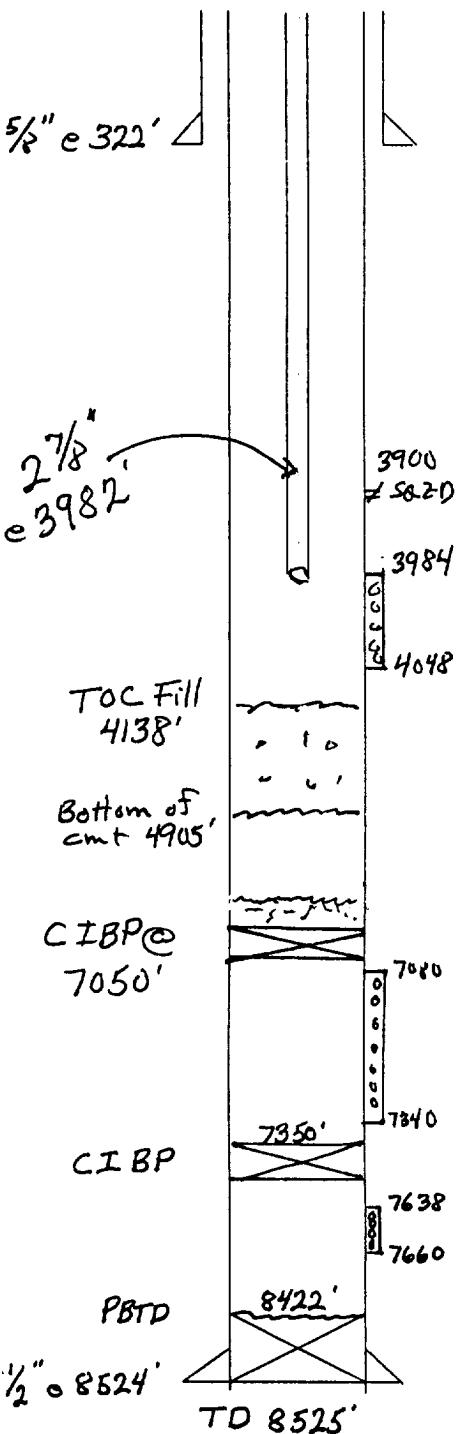
11/13/01 Set CIBP @ 7050' w/ 74' of cmt on Top

11/14/01 Perfd 3900' - SQZD w/ 150 sx

Drilled out cmt to 4138'

11/27/01 Perf 3984-88, 97-99, 4033-38, 44-48

11/29/01 Foam FRAC w/ 25,680 # 16/36 Brady Sol



1/2\" c. 8524'

TD 8525'