



STATE OF NEW MEXICO
ENERGY AND MINERALS DEPARTMENT
OIL CONSERVATION DIVISION
AZTEC DISTRICT OFFICE

GARREY CARRUTHERS
GOVERNOR

1000 RIO BRAZOS ROAD
AZTEC, NEW MEXICO 87410
(505) 334-6178

Date: 7-7-89

Oil Conservation Division
P.O. Box 2088
Santa Fe, NM 87504-2088

Re: Proposed MC _____
Proposed DHC _____
Proposed NSL X _____
Proposed SWD _____
Proposed WFX _____
Proposed PMX _____

Gentlemen:

I have examined the application dated 6-15-89
for the Benson-Martin Green COU#43 (H-2)
Operator Lease & Well No.

H-2-26N-1W and my recommendations are as follows:
Unit, S-T-R

Approved
NSL-2673

Yours truly,

Eric Busch

BENSON-MONTIN-GREER DRILLING CORP.

221 PETROLEUM CENTER BUILDING, FARMINGTON, NM. 87401 505-325-8874

June 13, 1989

New Mexico Oil Conservation Division
Department of Energy and Minerals
P.O. Box 2088
Santa Fe, NM 87504

RECEIVED
JUN 15 1989
OIL CON. DIV
DIST. 3

Re: REQUEST FOR ADMINISTRATIVE APPROVAL
OF UNORTHODOX LOCATION:
WEST PUERTO CHIQUITO MANCOS POOL
CANADA OJITOS UNIT #43 (H-8)
SE/4 NE/4 SECTION 8, T-26N, R-1W
1632' FNL, 1139' FEL

Gentlemen:

Benson-Montin-Greer Drilling Corp., operator of the Canada Ojitos Unit, hereby requests under Rule 4 of the Pool Rules (Order R-6469-A, and as further amended) administrative approval of the captioned unorthodox location.

All offsetting sections are within the participating area of the Canada Ojitos Unit and so there are no offset operators to notify.

The proration unit for the subject well lies within the Santa Fe National Forest. The reason for the unorthodox location is topography: topography influences the preservation of the natural and cultural resources by the roads and excavation necessary for the location.

These considerations are recognized by review of the topography as shown by the two enclosed copies of topographic maps. One map, from the Canada Ojitos Unit 7-1/2 minute quadrangle (scale 2.64" per mile, C.I. 20') shows the south half of Section 8, T-26N, R-1W in which the topography is clearly unsuitable for a location at the orthodox "windows" in either the SE/4 or SW/4.

The north half of Section 8 is shown on the Los Indios 7-1/2 minute quadrangle (scale 2.64" per mile, C.I. 20'). The NW window is in a topographically undesirable location from the standpoint of excavation and the window in the NE/4 of Section 8 is

...

BENSON-MONTIN-GREER DRILLING CORP.

New Mexico Oil Conservation Division

Page No. 2
June 13, 1989

too far out in an open meadow and would result in undesirable visual impact. The Forest Service landscape architect has, however, approved the unorthodox location which we are requesting here. This location is identified with a circle in the NE/4 of Section 8.

Yours truly,

BENSON-MONTIN-GREER DRILLING CORP.

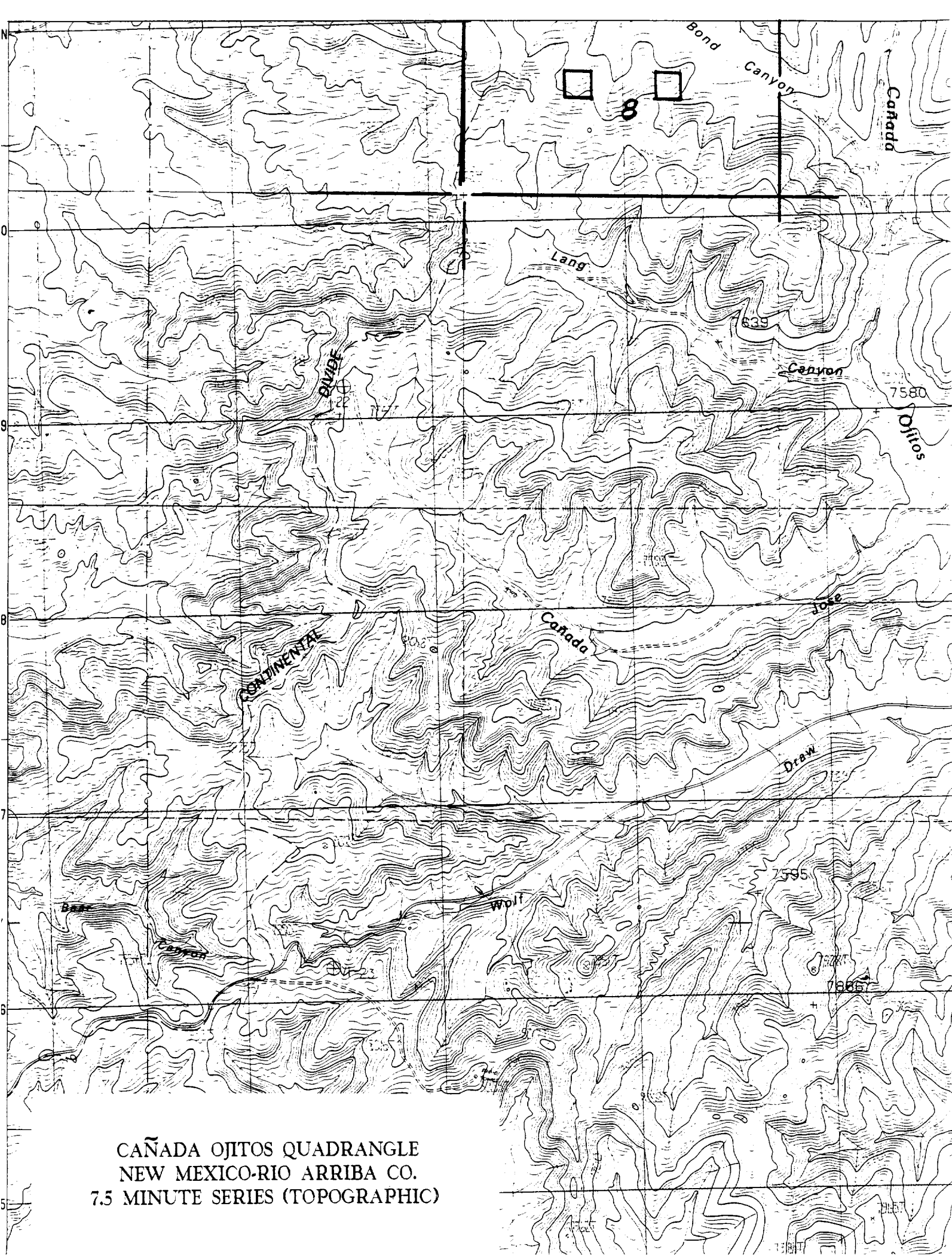
BY:


Albert R. Greer, President

ARG/tlp

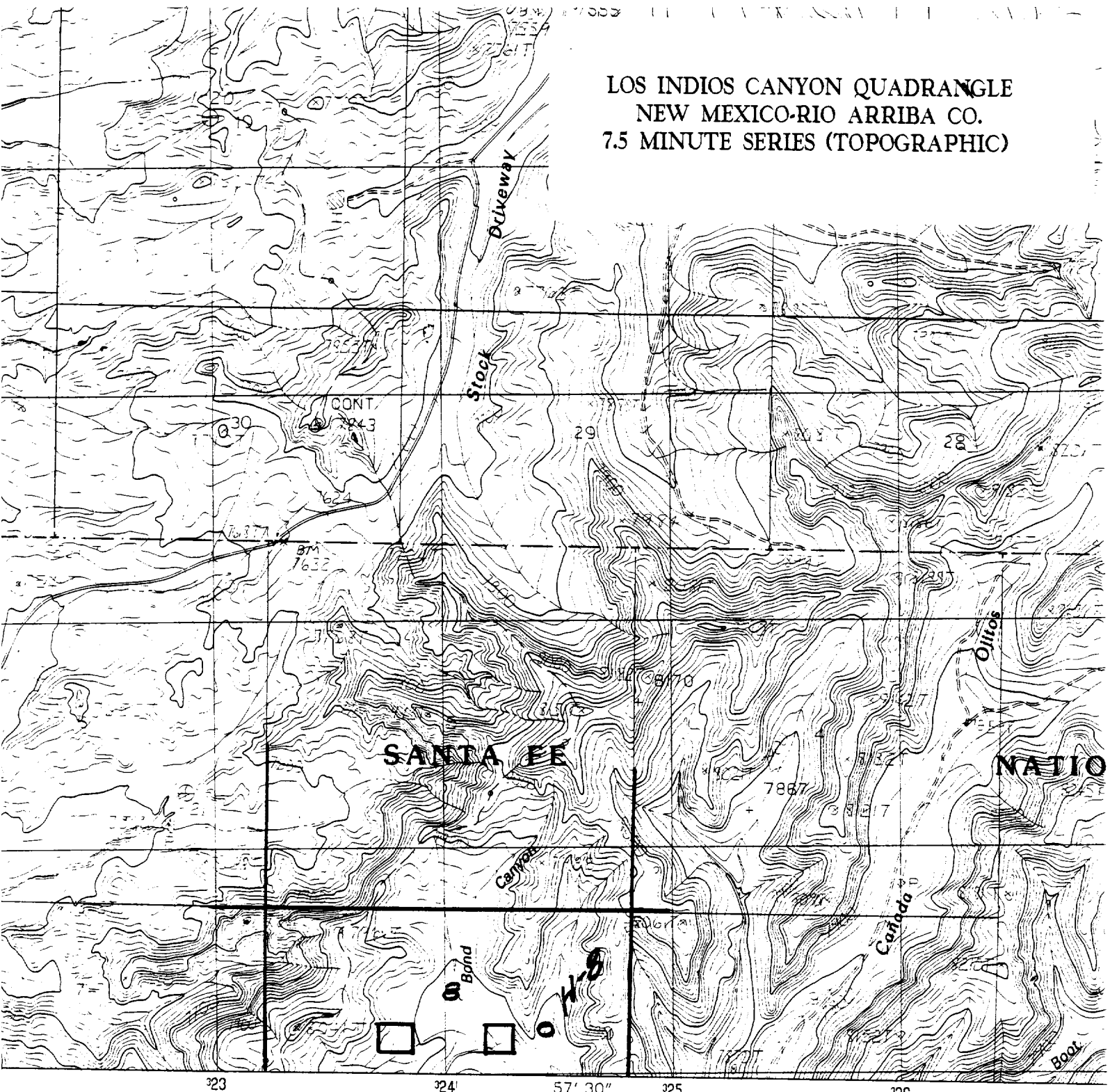
Enclosures

cc: Frank T. Chavez, NMOCD, Aztec



CAÑADA OJITOS QUADRANGLE
NEW MEXICO-RIO ARRIBA CO.
7.5 MINUTE SERIES (TOPOGRAPHIC)

LOS INDIOS CANYON QUADRANGLE
NEW MEXICO-RIO ARriba CO.
7.5 MINUTE SERIES (TOPOGRAPHIC)

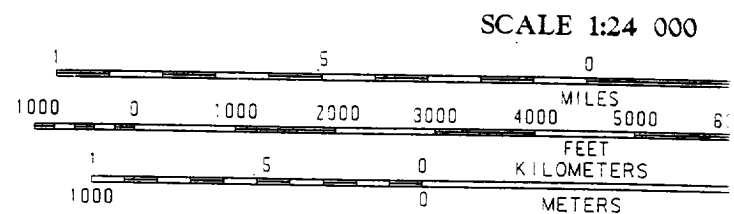


LOGICAL SURVEY
... USGS, NOS/NOAA
... 1976
... 1983
TRANSVERSE MERCATOR
... ZONE 13
... CENTRAL ZONE
... 1°09' WEST
... 12' EAST
... DATUM OF 1929
... AMERICAN DATUM
... Datum of 1983,
... shed corner ticks

boundaries of any
map
established
and positioned by



PROVISIONAL MAP
Produced from original
manuscript drawings. Informa-
tion shown as of date of
field check.



CONTOUR INTERVAL 20 FEET
DASHED LINES REPRESENT 10-FOOT

THIS MAP COMPLIES WITH NATIONAL MAP ACC
FOR SALE BY U.S. GEOLOGICAL SURVEY, DENV
OR RESTON, VIRGINIA 2209