

Submit to Appropriate
District Office
State Lease -- 6 copies
Fee Lease -- 5 copies

State of New Mexico
Energy, Minerals and Natural Resources Department

Form C-101
Revised 1-1-89

DISTRICT I
P.O. Box 1980, Hobbs, NM 88240

DISTRICT II
P.O. Drawer DD, Artesia, NM 88210

DISTRICT III
1000 Rio Brazos Rd., Aztec, NM

OIL CONSERVATION DIVISION

P.O. Box 2088

Santa Fe, New Mexico 87504-2088

OIL CON. DIV
DIST. 3

API NO. (assigned by OCD on New Wells)

30-039-25174

5. Indicate Type of Lease

STATE ☒

FEE ☐

6. State Oil & Gas Lease No.

E 291-3

APPLICATION FOR PERMIT TO DRILL, DEEPEN, OR PLUG BACK

1a. Type of Work:

DRILL ☒

RE-ENTER ☐

DEEPEN ☐

PLUG BACK ☐

b. Type of Well:

OIL
WELL ☐

GAS
WELL ☒

OTHER

SINGLE
ZONE ☐

MULTIPLE
ZONE ☒

7. Lease Name or Unit Agreement Name

Rincon Unit

2. Name of Operator

Union Oil Company of California

8. Well No.

201 E (E/320.74/320.74)

3. Address of Operator

3300 N. Butler, Ste 200, Farmington, NM 87401

9. Pool name or Wildcat

Largo Gallup, Basin Dakota

4. Well Location

Unit Letter J : 1765 Feet From The South Line and 1705 Feet From The East Line

Section 2

Township

26N

Range

7W

NMPM

Rio Arriba

County

10. Proposed Depth

7340

11. Formation

Gallup/Dakota

12. Rotary or C.T.

Rotary

13. Elevations (Show whether DF, RT, GR, etc.)

6663

14. Kind & Status Plug. Bond

Blanket

15. Drilling Contractor

Not Selected

16. Approx. Date Work will start

April 15, 1992

17. PROPOSED CASING AND CEMENT PROGRAM

SIZE OF HOLE	SIZE OF CASING	WEIGHT PER FOOT	SETTING DEPTH	SACKS OF CEMENT	EST. TOP
12.25	8.625	24#	350	245	Surface
7.875	5.5	17#	7340	990 2 stage	Surface
			Stage tool	@ 4000' +/-	

Union Oil Company of California wishes to advise that we intend to drill a 12 1/4" hole with spud mud to 350' and set 8-5/8", 24.0#, K-55 ST&C casing to 350' cementing to surface with 245 sxs (289 cu ft) Class B cement with 2% CaCl2. Wait on cement 12 hours. Nipple up and test BOP. Drill 7-7/8" hole out of surface to 7340' with mud. Log well. Set 5.50", 17.0#, K-55 LT&C production casing to 7340' cementing to surface in two stages with 290 sxs (542 cu ft) extended Cl. B with 2% CaCl2 tail with 150 sxs Cl. B. Second stage 400 sxs (748 cu ft) extended Cl. B with 2 % CaCl2 tail with 150 sxs Cl. B with 2 % CaCl2. Perforate pay section in the Gallup Tocito and Dakota. Stimulate as necessary.

IN ABOVE SPACE DESCRIBE PROPOSED PROGRAM: IF PROPOSAL IS TO DEEPEN OR PLUG BACK, GIVE DATA ON PRESENT PRODUCTIVE ZONE AND PROPOSED NEW PRODUCTIVE ZONE. GIVE BLOWOUT PREVENTER PROGRAM, IF ANY.

I hereby certify that the information above is true and complete to the best of my knowledge and belief.

SIGNATURE

Jim Benson

TITLE

Dist. Drlg. Supt.

DATE

3/26/92

TYPE OR PRINT NAME

TELEPHONE NO.

(This space for State Use)

APPROVED BY

Ernie Bush

TITLE

DEPUTY OIL & GAS INSPECTOR, DIST. #

DATE

APR 02 1992

CONDITIONS OF APPROVAL, IF ANY:

APPROVAL EXPIRES 10-2-92
UNLESS DRILLING IS COMMENCED.
SPUD NOTICE MUST BE SUBMITTED
WITHIN 10 DAYS.

Submit to Appropriate
District Office
State Lease - 4 copies
Fee Lease - 3 copies

State of New Mexico
Energy, Minerals and Natural Resources Department

OIL CONSERVATION DIVISION

P.O. Box 2088
Santa Fe, New Mexico 87504-2088

DISTRICT I
P.O. Box 1980, Hobbs, NM 88240

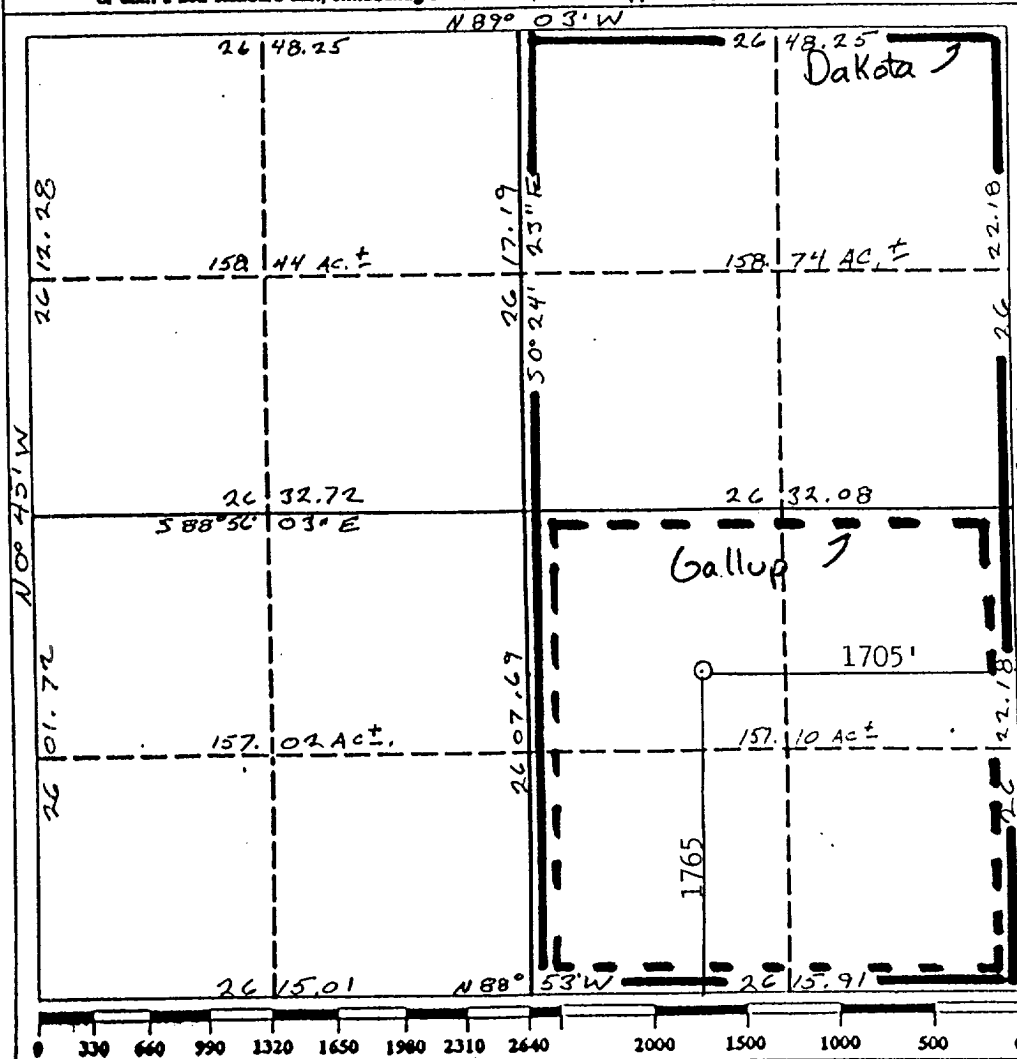
DISTRICT II
P.O. Drawer DD, Artesia, NM 88210

DISTRICT III
1000 Rio Brazos Rd., Aztec, NM 87410

WELL LOCATION AND ACREAGE DEDICATION PLAT

All Distances must be from the outer boundaries of the section

Operator <i>Union Oil Co of Calif</i> UNOCAL		Lease RINCON		Well No. 201 E
Unit Letter J	Section 2	Township 26 N	Range 7 W NMPM	County Rio Arriba
Actual Footage Location of Well: 1765 feet from the South line and 1705 feet from the East line				
Ground level Elev. 6663	Producing Formation Gallup/Dakota	Pool Largo/Basin	Dedicated Acreage: SE 1/4 160 E 1/2 320.74 320.74	
<p>1. Outline the acreage dedicated to the subject well by colored pencil or hatchure marks on the plat below.</p> <p>2. If more than one lease is dedicated to the well, outline each and identify the ownership thereof (both as to working interest and royalty).</p> <p>3. If more than one lease of different ownership is dedicated to the well, have the interest of all owners been consolidated by communitization, unitization, force-pooling, etc.? <input type="checkbox"/> Yes <input type="checkbox"/> No If answer is "yes" type of consolidation _____ If answer is "no" list the owners and tract descriptions which have actually been consolidated. (Use reverse side of this form if necessary.) No allowable will be assigned to the well until all interests have been consolidated (by communitization, unitization, forced-pooling, or otherwise) or until a non-standard unit, eliminating such interest, has been approved by the Division.</p>				



OPERATOR CERTIFICATION

I hereby certify that the information contained herein is true and complete to the best of my knowledge and belief.

Signature
Robert C. Frank
Printed Name
Robert C. Frank
Position
Agent
Company
Union Oil Company of California
Date
March 24, 1992

SURVEYOR CERTIFICATION

I hereby certify that the well location shown on this plat was plotted from field notes of actual surveys made by me or under my supervision, and that the same is true and correct to the best of my knowledge and belief.

Date Surveyed
December 27, 1991
Signature
Cecil B. Tull
Professional Surveyor
New Mexico
REGISTERED PROFESSIONAL LAND SURVEYOR
9672
Cecil B. Tull
Certificate No.
9672

