

District I
PO Box 1980, Hobbs, NM 88241-1980

District II
PO Drawer 00, Artesia, NM 88211-0719

District III
1000 Rio Brazos Rd., Aztec, NM 87410

District IV
PO Box 2088, Santa Fe, NM 87504-2088

State of New Mexico
Energy, Minerals & Natural Resources Department

OIL CONSERVATION DIVISION
PO Box 2088
Santa Fe, NM 87504-2088

Form C-102
Revised February 21, 1994
Instructions on back
Submit to Appropriate District Office
State Lease - 4 Copies
Fee Lease - 3 Copies

CONFIDENTIAL
AMENDED REPORT
070 FARMINGTON, NM

WELL LOCATION AND ACREAGE DEDICATION PLAT

*API Number		*Pool Code 72319/71599	*Pool Name Blanco Mesaverde/Basin Dakota
*Property Code 016606	*Property Name REAMS COM		*Well Number 3Y
*OGRID No. 05073	*Operator Name CONOCO, INC.		*Elevation 6447'

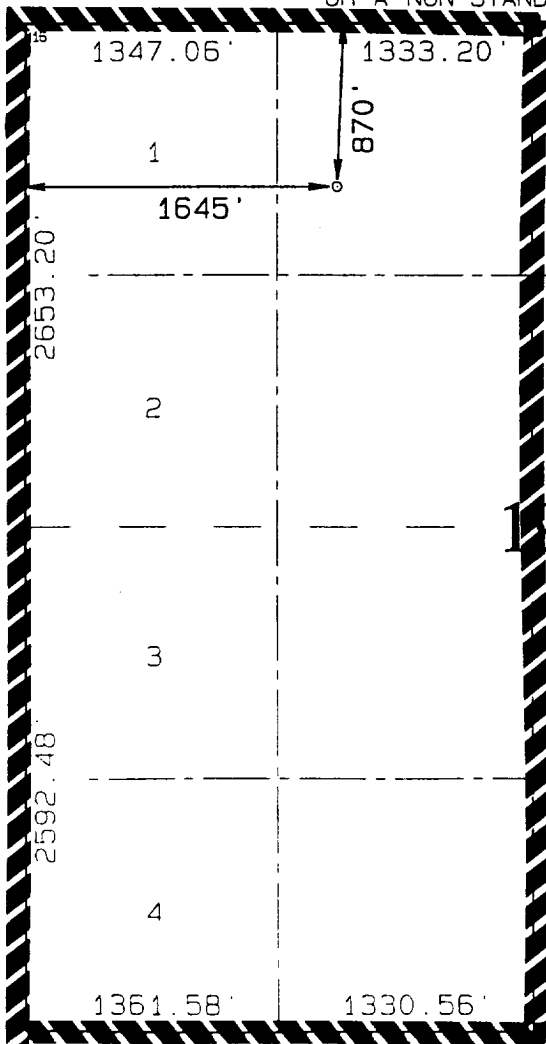
10 Surface Location

UL or lot no. C	Section 19	Township 26N	Range 6W	Lot Ion	Feet from the 870	North/South line North	Feet from the 1645	East/West line West	County RIO ARriba
--------------------	---------------	-----------------	-------------	---------	----------------------	---------------------------	-----------------------	------------------------	----------------------

11 Bottom Hole Location If Different From Surface

UL or lot no.	Section	Township	Range	Lot Ion	Feet from the	North/South line	Feet from the	East/West line	County
12 Dedicated Acres WEST/320		13 Joint or Infill		14 Consolidation Code		15 Order No.			

NO ALLOWABLE WILL BE ASSIGNED TO THIS COMPLETION UNTIL ALL INTERESTS HAVE BEEN CONSOLIDATED
OR A NON-STANDARD UNIT HAS BEEN APPROVED BY THE DIVISION



RECEIVED
MAR - 4 - 1998
OIL CON. DIV.
DIST. 3

ACCEPTED FOR RECORD
MAR 13 1998
FARMINGTON DISTRICT OFFICE
BY *[Signature]*

17 OPERATOR CERTIFICATION

I hereby certify that the information contained herein is true and complete to the best of my knowledge and belief

Mike L. Mankin
Signature
MIKE L. MANKIN
Printed Name
RIGHT-OF-WAY AGENT
Title
2-9-98
Date

18 SURVEYOR CERTIFICATION

I hereby certify that the well location shown on this plat was plotted from field notes of actual surveys made by me or under my supervision and that the same is true and correct to the best of my belief.

DECEMBER 30, 1997
Date of Survey
Signature and Seal of Professional Surveyor
Neale C. Edwards
NEALE C. EDWARDS
NEW MEXICO
REGISTERED PROFESSIONAL SURVEYOR
6857
Certificate Number

NMOCD