

UNITED STATES  
DEPARTMENT OF THE INTERIOR  
BUREAU OF LAND MANAGEMENT

FORM APPROVED  
OMB NO. 1004-0136  
Expires: November 30, 2000

APPLICATION FOR PERMIT TO DRILL OR REENTER

1a. Type of Work <input checked="" type="checkbox"/> DRILL <input type="checkbox"/> REENTER		5. Lease Serial No. NMNM-046
1b. Type of Well <input type="checkbox"/> Oil Well <input checked="" type="checkbox"/> Gas Well <input type="checkbox"/> Other <input type="checkbox"/> Single Zone <input type="checkbox"/> Multiple Zone		6. If Indian, Allottee or Tribe Name
2. Name of Operator Energen Resources Corporation 162928		7. Unit or CA Agreement Name and No. 21896
3a. Address 2198 Bloomfield Highway Farmington, New Mexico 87401	3b. Phone No. (include area code) (505)325-6800	8. Lease Name and Well No. Cheney Federal 1B
4. Location of Well (Report location clearly and in accordance with any State requirements)* At surface 870' FSL, 2500' FWL At proposed prod. zone		9. API Well No. 30-039-26451
14. Distance in miles and direction from nearest town or post office* 5 miles north of Ojito, NM		10. Field and Pool, or Exploratory Blanco Mesaverde
15. Distance from proposed* location to nearest property or lease line, ft. (Also to nearest drg. unit line, if any) 870'		11. Sec., T., R., M., or Blk. and Survey or Area N Sec. 08, T26N, R02W, N.M.P.M.
16. No. of Acres in lease 1120		12. County or Parish Rio Arriba
17. Spacing Unit dedicated to this well S 1/2		13. State NM
18. Distance from proposed location* to nearest well, drilling, completed, applied for, on this lease, ft. 1100'		20. BLM/BIA Bond No. on file
21. Elevations (Show whether DF, KDB, RT, GL, etc.) 7244' GL		22. Approximate date work will start* 12/01/02
		23. Estimated duration 10 days

24. Attachments

The following, completed in accordance with the requirements of Onshore Oil and Gas Order No. 1, shall be attached to this form:

- |   |  |
|---|--|
| 1. Well plat certified by a registered surveyor.  | 4. Bond to cover the operations unless covered by an existing bond on file (see Item 20 above).    |
| 2. A Drilling Plan  | 5. Operator certification.   |
| 3. A Surface Use Plan (if the location is on National Forest System Lands, the SUPO shall be filed with the appropriate Forest Service Office). | 6. Such other site specific information and/or plans as may be required by the authorized officer. |

25. Signature Vicki Donaghey	Name (Printed/Typed) Vicki Donaghey	Date 08/20/02
Title Production Assistant		

Approved by (Signature) S. W. Anderson	Name (Printed/Typed)	Date OCT 17 2002
Title Asst. Field Mgr.	Office Albuquerque	

Application approval does not warrant or certify that the applicant holds legal or equitable title to those rights in the subject lease which would entitle the applicant to conduct operations thereon.  
Conditions of approval, if any, are attached.

Title 18 U.S.C. Section 1001 and Title 43 U.S.C. Section 1212, make it a crime for any person knowingly and willfully to make to any department or agency of the United States any false, fictitious or fraudulent statements or representations as to any matter within its jurisdiction.

\*(Instructions on Reverse)

District II  
PO Drawer DD, Artesia, NM 88211-0719

## OIL CONSERVATION DIVISION

Instructions on back  
Submit to Appropriate District Office  
State Lease - 4 Copies  
Fee Lease - 3 CopiesDistrict III  
1000 Rio Brazos Rd., Aztec, NM 87410

PO Box 2088

Santa Fe, NM 87504-2088

District IV  
PO Box 2088, Santa Fe, NM 87504-2088☐ AMENDED REPORT

## WELL LOCATION AND ACREAGE DEDICATION PLAT

*API Number <b>30-039-26451</b>		*Pool Code 72319	*Pool Name BLANCO MESAVERDE
*Property Code <b>21896</b>	*Property Name CHENEY FEDERAL		*Well Number 18
*OGRIID No. 162928	*Operator Name ENERGEN RESOURCES CORPORATION		*Elevation 7244'

<sup>10</sup> Surface Location

UL or lot no.	Section	Township	Range	Lot Idn	Feet from the	North/South line	Feet from the	East/West line	County
N	8	26N	2W		870	SOUTH	2500	WEST	RIO ARriba

<sup>11</sup> Bottom Hole Location If Different From Surface

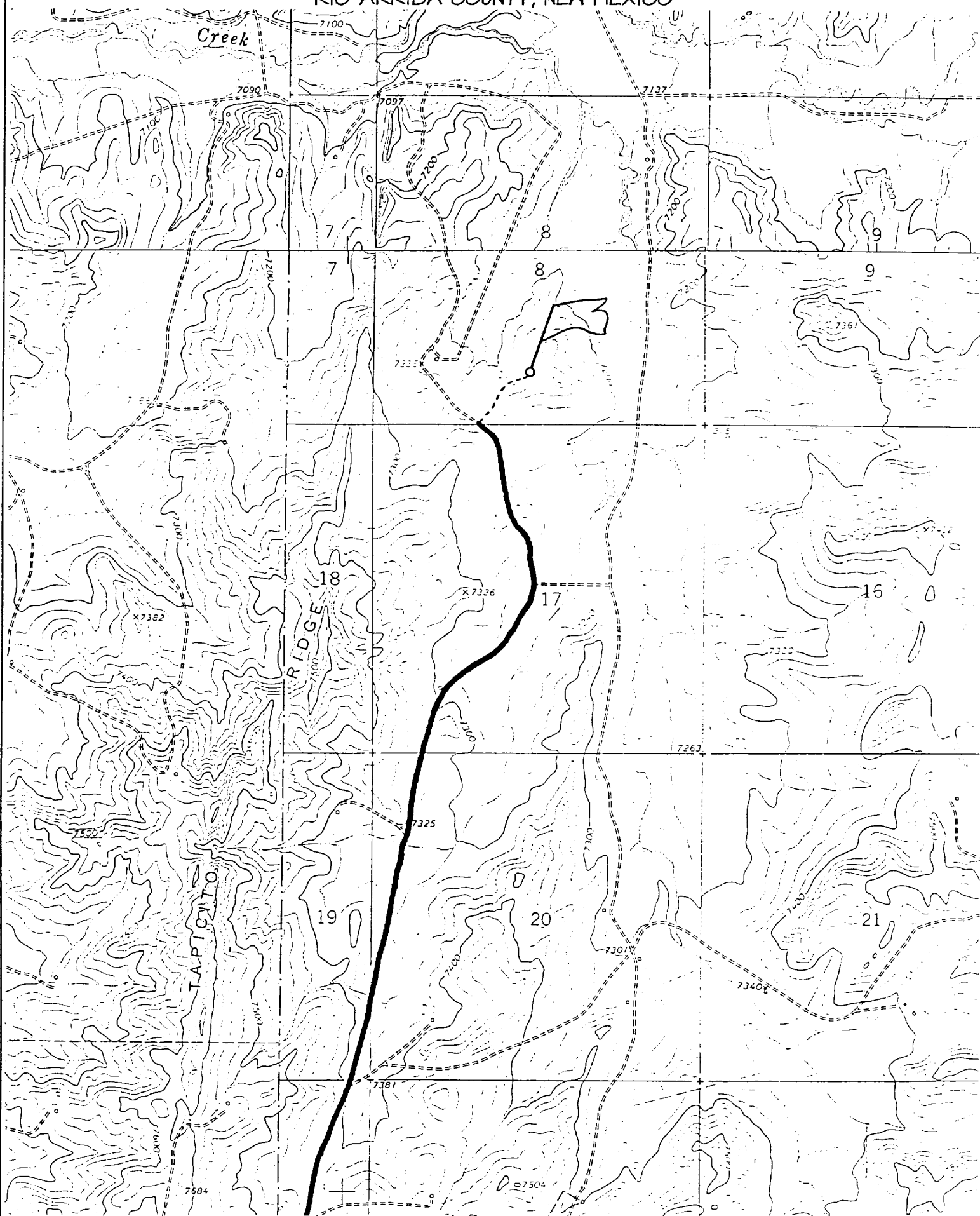
UL or lot no.	Section	Township	Range	Lot Idn	Feet from the	North/South line	Feet from the	East/West line	County

<sup>12</sup> Dedicated Acres 320.0 Acres - (5/2)	<sup>13</sup> Joint or Infill	<sup>14</sup> Consolidation Code	<sup>15</sup> Order No.
--	-------------------------------	----------------------------------	-------------------------

NO ALLOWABLE WILL BE ASSIGNED TO THIS COMPLETION UNTIL ALL INTERESTS HAVE BEEN CONSOLIDATED  
OR A NON-STANDARD UNIT HAS BEEN APPROVED BY THE DIVISION

	<sup>17</sup> OPERATOR CERTIFICATION I hereby certify that the information contained herein is true and complete to the best of my knowledge and belief Signature _____ Don Graham Printed Name _____ Production Superintendant Title _____ Date _____
	<sup>18</sup> SURVEYOR CERTIFICATION I hereby certify that the well location shown on this plat was plotted from field notes of actual surveys made by me or under my supervision, and that the same is true and correct to the best of my belief. Date of Survey: JULY 25, 2002 Signature and Seal of Professional Surveyor
	<b>JASON C. EDWARDS</b> Certificate Number 15269

870' FSL & 2500' FWL, SECTION 8, T26N, R2W, N.M.P.M.  
RIO ARRIBA COUNTY, NEW MEXICO



WELL NAME: Cheney Federal #1B

LOCATION: 870' FSL, 2500' FWL, Section 8, T26N, R2W, Rio Arriba, New Mexico

FIELD: Blanco Mesaverde

ELEVATION: 7244' GL

FORMATION TOPS:

Surface	San Jose	Huerfanito Benonite	4241
Nacimiento	2506	Cliff House	5506
Ojo Alamo	3391	Menefee	5581
Kirtland	3536	Point Lookout	5876
Fruitland	3576	Mancos Shale	6171
Pictured Cliffs	3741		
Lewis	3911	<b>Total Depth</b>	<b>6326</b>

*Handwritten note: Nacimiento top - 168' - correct*

LOGGING PROGRAM:

Open Hole Logs:

Surface to intermediate: NONE

Inter TD to total depth: Temp/HRI/CNT, LDT/GR

Mud Logs: 3600' to total depth

Coring: None

Natural Gauges: Every 500' from intermediate TD to total depth

MUD PROGRAM: Fresh water low solids mud from surface to intermediate TD (9.0 – 9.2 PPG).

Air/mist from intermediate casing point to total depth.

CASING PROGRAM:

<u>HOLE SIZE</u>	<u>DEPTH</u>	<u>CSG SIZE</u>	<u>WT.</u>	<u>GRADE</u>
12-1/4"	200'	9-5/8"	36#	J-55
8-3/4"	4111'	7"	20#	J-55
6-1/4"	3961'-6326'	4-1/2"	10.5#	J-55

TUBING PROGRAM:

6200'	2 3/8"	4.7#	J-55
-------	--------	------	------

WELLHEAD: 11" 3000 x 9 5/8" casing head. 11" 3000 x 7 1/16" 3000 xmas tree.

### BOP SPECIFICATIONS:

An 11" 2000 psi minimum double gate BOP stack (Figure 1) will be used following nipple up of casing head. During air drilling operations, a Shaffer Type 50 or equivalent rotating head will be installed on top of the stack. A 2" nominal, 2000 psi minimum choke manifold will be used.

### CEMENTING:

9 5/8 surface casing - Cement with 110 sks Class B Cement with 1/4" floccle/sk and 2% calcium chloride (130 cu. ft. of slurry, 100% excess to circulate to surface). WOC 12 hrs. Test casing to 600# for 30 minutes.

Texas Pattern Guide Shoe on bottom with centralizers on the first three joints.

7" intermediate casing - cement with 415 sks 65/35 Class B Poz with 6% gel, 2% calcium chloride, 10% gilsonite, and 1/4# floccle/sk. Tail with 100 sks Class B w/2% calcium chloride, 10% gilsonite and 1/4# floccle/sk. (927 cu. Ft. of slurry, 50% excess to circulate to surface). WOC 12 hrs. If cement does not circulate, run temperature survey in 8 hrs. to determine T<sub>OC</sub>. Test casing to 1200 psi for 30 minutes.

Cement nose guide shoe on bottom with a self-fill insert float valve on top of shoe joint. 8 bow spring centralizers spaced every 2nd joint off bottom. Two turbolating centralizers at the base of the Ojo Alamo.

4 1/2 Production Liner

Cement with 290 sks 50/50 poz with 2% gel, 5 PPS gilsonite, .4% halad - 9 and 1/4# floccle/sk ( 364 cu. Ft., 50% excess to intermediate casing). WOC 18 hrs prior to completion.

Cement nose guide shoe on bottom with float collar on top of shoe joint. Liner hanger will have a neoprene packoff on top.

### OTHER INFORMATION:

- 1) The Blanco Mesaverde completed.
- 2) No abnormal temperatures or pressures are anticipated.
- 3) Anticipated pore pressure for the Mesa Verde is 800, Pictured Cliffs is 600 and the Fruitland 500 psi.
- 4) If lost circulation is encountered, sufficient LCM will be added to the mud system to maintain well control.
- 5) This gas is dedicated.