

UNITED STATES  
DEPARTMENT OF THE INTERIOR  
BUREAU OF LAND MANAGEMENT

FORM APPROVED  
OMB NO. 1004-0136  
Expires February 28, 1995

APPLICATION FOR PERMIT TO DRILL OR DEEPEN

1a TYPE OF WORK

DRILL ☒

DEEPEN ☐

b TYPE OF WELL

OIL WELL ☐ GAS WELL ☒ OTHER ☐

SINGLE ZONE ☒ MULTIPLE ZONE ☐

2 NAME OF OPERATOR

Conoco Inc.

3 ADDRESS AND TELEPHONE NO

10 Desta Drive, Suite 649W, Midland, TX 79705; 915/686-5515

4 LOCATION OF WELL (Report location clearly and in accordance with any State requirements\*)

At surface

1750' FSL & 1980' FEL

At proposed prod Zone

1750' FSL & 1980' FEL

14 DISTANCE IN MILES AND DIRECTION FROM NEAREST TOWN OR POST OFFICE\*

15 DISTANCE FROM PROPOSED\*

LOCATION TO NEAREST  
PROPERTY OR LEASE LINE, FT  
(Also to nearest drlg Unit line, if any)

6 NO. OF ACRES IN LEASE

640+/-

17 NO. OF ACRES ASSIGNED  
TO THIS WELL

E/319.79

18 DISTANCE FROM PROPOSED LOCATION\*

TO NEAREST WELL, DRILLING, COMPLETED,  
OR APPLIED FOR, ON THIS LEASE, FT

9 PROPOSED DEPTH

6285' 5985'

20 ROTARY OR CABLE TOOLS

Rotary

21 ELEVATIONS (Show whether DF, RT, GR, etc.)

6906'-

22 APPROX DATE WORK WILL START\*

6/1/00

PROPOSED CASING AND CEMENTING PROGRAM

SIZE OF HOLE	GRADE, SIZE OF CASING	WEIGHT PER FOOT	SETTING DEPTH	QUANTITY OF CEMENT
12-1/4"	J-55; 9-5/8"	32.5#	250' +/-	125 sxs, circ.
8-3/4"	J-55; 7"	20#	3849'	581 sxs, circ.
6-1/4"	J-55, 4-1/2"	10.5#	5985'	241 sxs, circ.

It is proposed to drill a vertical wellbore to be completed in the Mesaverde Pool. An NOS was filed 11/8/99. The well will be drilled and equipped according to the following additional attachments:

1. Well Location & Acreage Dedication Plat (C-102).
2. Proposed Well Plan Outline.
3. Cementing Plan.
4. Blowout Preventer Hookup.
5. Surface Use Plan.
6. Production Facility Layout.

COPY



This application includes ROW for the well pad.

IN ABOVE SPACE DESCRIBE PROPOSED PROGRAM: If proposal is to deepen give data on present productive zone and proposed new productive zone. If proposal is to drill or deepen directionally, give pertinent data on subsurface locations and measured and true vertical depths. Give blowout preventer program, if any.

25

SIGNED

*Joe Ann Johnson*

TITLE Sr. Property Analyst

DATE 5/15/00

(This space for Federal or State office Use)

PERMIT NO.

APPROVAL DATE

Application approval does not warrant or certify that the applicant holds legal or equitable title to those rights in the subject lease which would entitle the applicant to conduct operations thereon.

CONDITIONS OF APPROVAL, IF ANY:

APPROVED BY

*David L. Sitzler Acting Asst Field Mgr*

DATE

JUL 11 2000

\*See Instructions On Reverse Side

Title 18 U.S.C. Section 1001, makes it a crime for any person knowingly and willfully to make to any department or agency of the United States any false, fictitious or fraudulent statements or representations as to any matter within its jurisdiction.

*JH*

District I  
PO Box 1980, Hobbs, NM 88241-1980

District II  
PO Drawer 00, Artesia, NM 88211-0719

District III  
1000 Rio Brazos Rd., Aztec, NM 87410

District IV  
PO Box 2088, Santa Fe, NM 87504-2088

State of New Mexico  
Energy, Minerals & Natural Resources Department

OIL CONSERVATION DIVISION  
PO Box 2088  
Santa Fe, NM 87504-2088

Form C-102  
Revised February 21, 1994  
Instructions on back  
Submit to Appropriate District Office  
State Lease - 4 Copies  
Fee Lease - 3 Copies

☐ AMENDED REPORT

### WELL LOCATION AND ACREAGE DEDICATION PLAT

1 API Number <b>30-039-26494</b>		2 Pool Code <b>72319 -</b>		3 Pool Name <b>BLANCO MESAVERDE -</b>		
4 Property Code <b>003133</b>		5 Property Name <b>AXI APACHE K</b>			6 Well Number <b>2C</b>	
7 OGRID No. <b>005073</b>		8 Operator Name <b>CONOCO, INC.</b>			9 Elevation <b>6906</b>	

#### 10 Surface Location

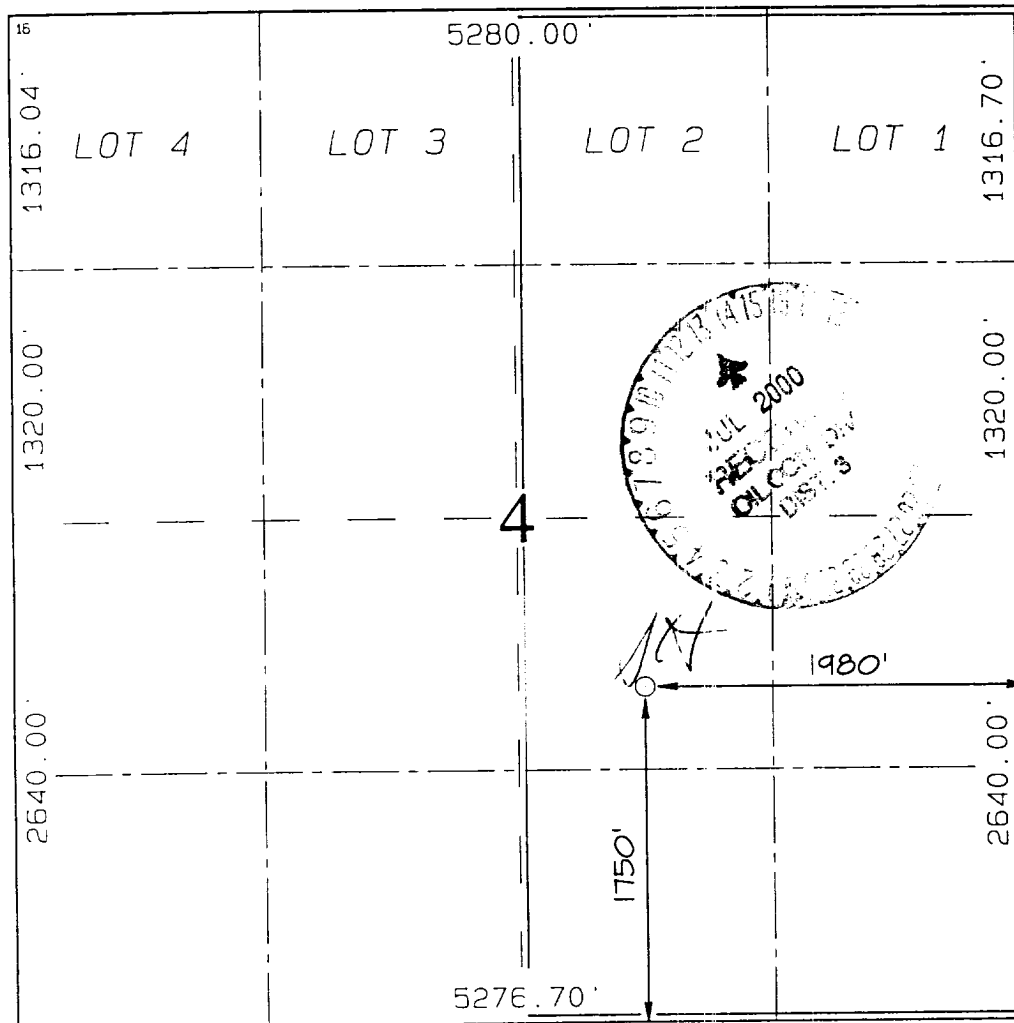
UL or lot no.	Section	Township	Range	Lot Idn	Feet from the	North/South line	Feet from the	East/West line	County
J	4	26N	5W		1750	SOUTH	1980	EAST	RIO ARriba

#### 11 Bottom Hole Location If Different From Surface

UL or lot no.	Section	Township	Range	Lot Idn	Feet from the	North/South line	Feet from the	East/West line	County

12 Dedicated Acres <b>E/319.79</b>	13 Joint or Infill	14 Consolidation Code	15 Order No.
---------------------------------------	--------------------	-----------------------	--------------

NO ALLOWABLE WILL BE ASSIGNED TO THIS COMPLETION UNTIL ALL INTERESTS HAVE BEEN CONSOLIDATED  
OR A NON-STANDARD UNIT HAS BEEN APPROVED BY THE DIVISION



#### 17 OPERATOR CERTIFICATION

I hereby certify that the information contained herein is true and complete to the best of my knowledge and belief.

*Mike L. Mankin*  
Signature  
Mike L. Mankin  
Printed Name  
Right-of-Way Agent  
Title  
12/13/99  
Date

#### 18 SURVEYOR CERTIFICATION

I hereby certify that the well location shown on this plat was plotted from field notes of actual surveys made by me or under my supervision, and that the same is true and correct to the best of my belief.

NOVEMBER 4, 1999  
Date of Survey  
Signature and Seal of Professional Surveyor  
*Neale C. Edwards*  
NEALE C. EDWARDS  
NEW MEXICO  
6857  
Certificate Number 6857

District I  
PO Box 1980, Hobbs, NM 88241-1980

State of New Mexico  
Energy, Minerals & Natural Resources Department

Form C-102  
Revised February 21, 1994

District II  
PO Drawer DD, Artesia, NM 88211-0719

Instructions on back  
Submit to Appropriate District Office  
State Lease - 4 Copies  
Fee Lease - 3 Copies

District III  
1000 Rio Brazos Rd., Aztec, NM 87410

OIL CONSERVATION DIVISION  
PO Box 2088  
Santa Fe, NM 87504-2088

District IV  
PO Box 2088, Santa Fe, NM 87504-2088

☐ AMENDED REPORT

### WELL LOCATION AND ACREAGE DEDICATION PLAT

*API Number <b>30-039-26494</b>		*Pool Code <b>72319-</b>	*Pool Name <b>BLANCO MESAVERDE-</b>
*Property Code <b>003133</b>	*Property Name <b>AXI APACHE K</b>		*Well Number <b>2C</b>
*OGRID No. <b>005073</b>	*Operator Name <b>CONOCO, INC.</b>		*Elevation <b>6906'</b>

#### 10 Surface Location

UL or lot no.	Section	Township	Range	Lot Idn	Feet from the	North/South line	Feet from the	East/West line	County
J	4	26N	5W		1750	SOUTH	1980	EAST	RIO ARriba

#### 11 Bottom Hole Location If Different From Surface

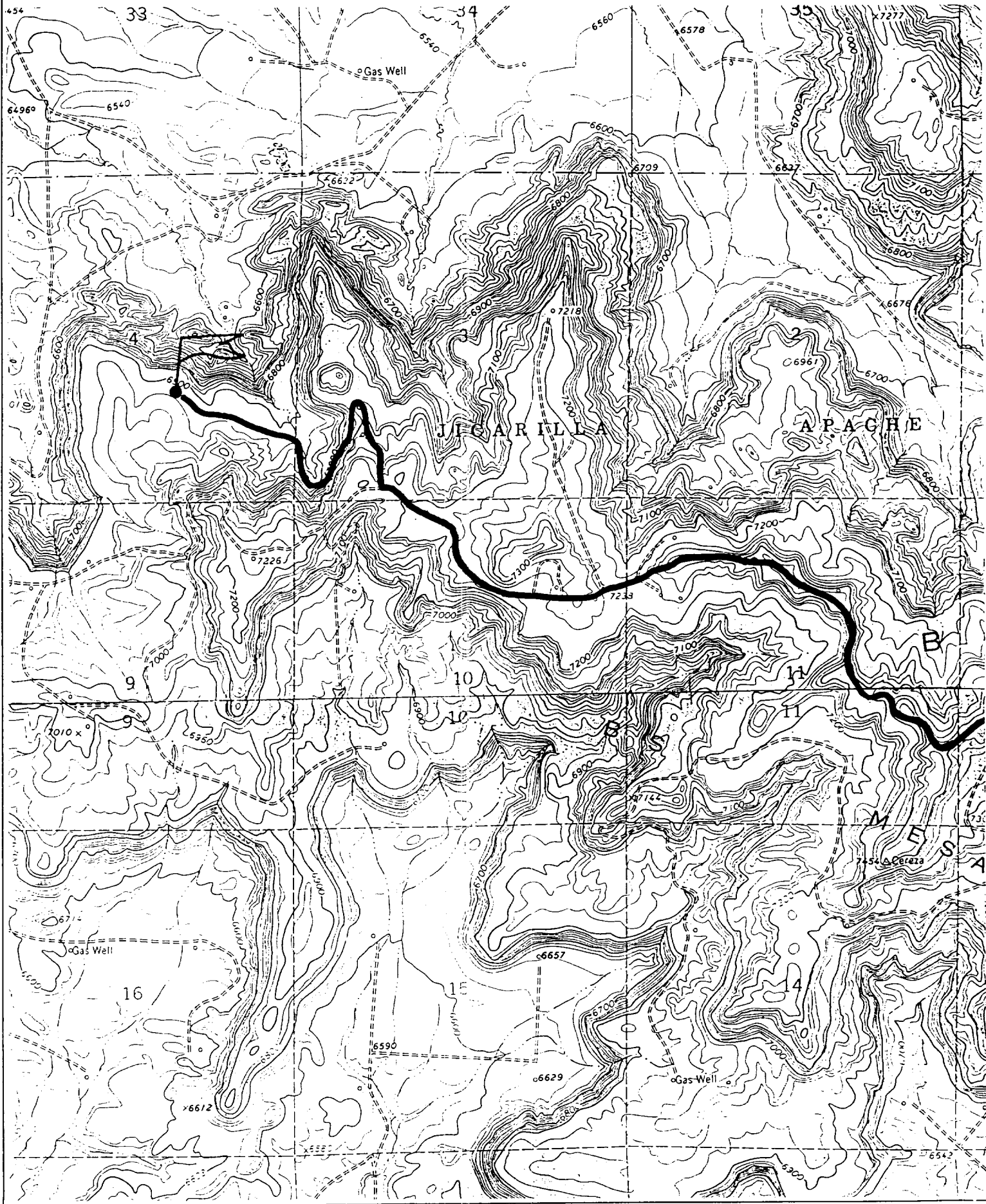
UL or lot no.	Section	Township	Range	Lot Idn	Feet from the	North/South line	Feet from the	East/West line	County
12 Dedicated Acres <b>319.79</b>		13 Joint or Infill		14 Consolidation Code		15 Order No.			

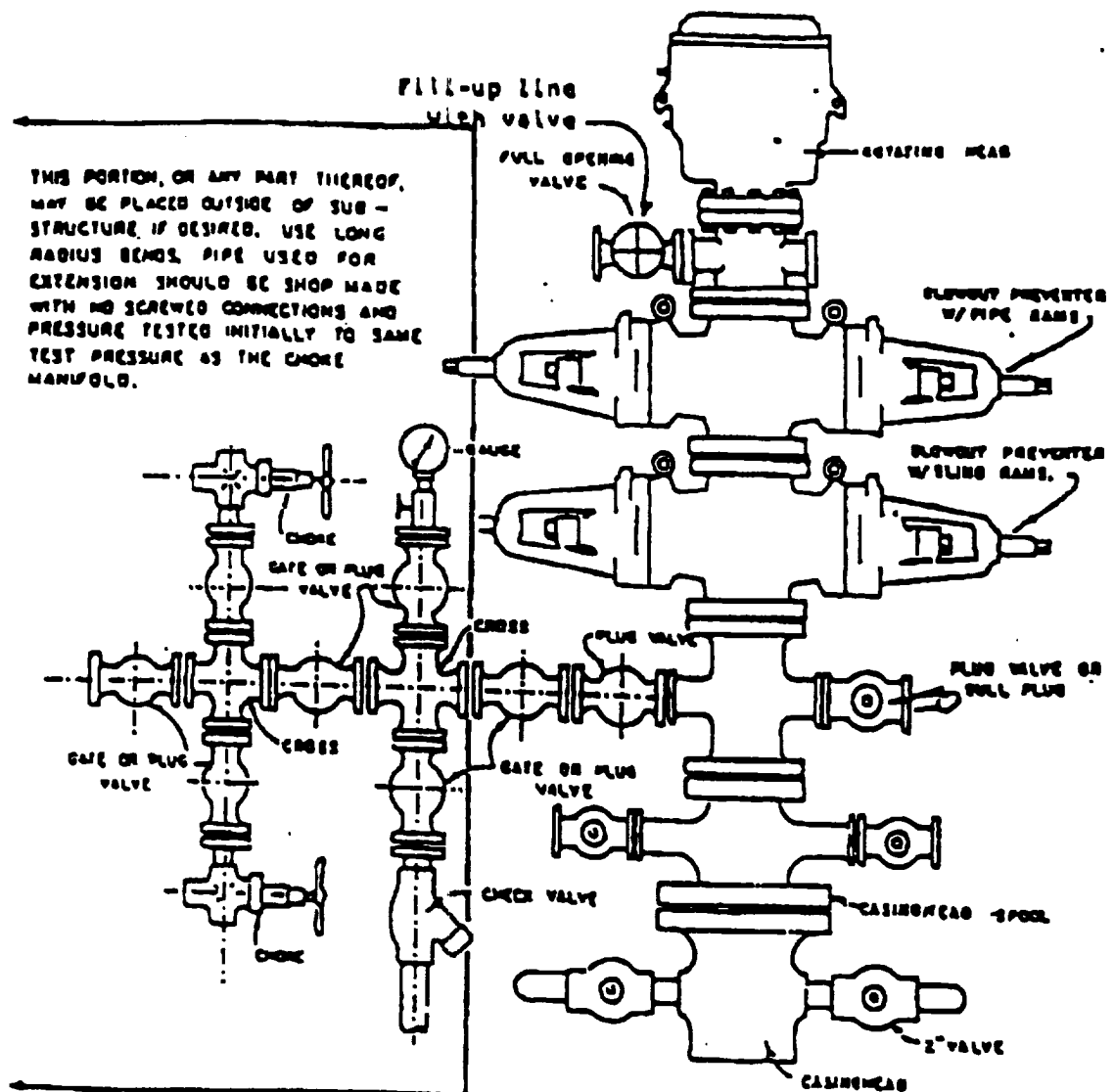
NO ALLOWABLE WILL BE ASSIGNED TO THIS COMPLETION UNTIL ALL INTERESTS HAVE BEEN CONSOLIDATED  
OR A NON-STANDARD UNIT HAS BEEN APPROVED BY THE DIVISION

<div>15</div> <div>LOT 4</div> <div>LOT 3</div> <div>LOT 2</div> <div>LOT 1</div> <div>AXI APACHE K #2</div> <div>AXI APACHE K #2A</div> <div>26</div> <div>4</div>	<div>17</div> <b>OPERATOR CERTIFICATION</b> I hereby certify that the information contained herein is true and complete to the best of my knowledge and belief.  Signature <b>Mike L. Mankin</b> Printed Name <b>Right-of-Way Agent</b> Title  Date   <div>18</div> <b>SURVEYOR CERTIFICATION</b> I hereby certify that the well location shown on this plat was plotted from field notes of actual surveys made by me or under my supervision, and that the same is true and correct to the best of my belief.  <b>NOVEMBER 4, 1999</b> Date of Survey Signature and Seal of Professional Surveyor  <b>PRELIMINARY</b>  Certificate Number <b>6857</b>
---	---

CONOCO, INC. AXI APACHE K #2C

1750' FSL & 1980' FEL, SECTION 4, T26N, R5W, N.M.P.M.  
RIO ARriba COUNTY, NEW MEXICO





### BLOWOUT PREVENTER HOOKUP

Drilling contractors used in the San Juan Basing supply 3000 psi equipment, but cannot provide annular preventors because of sub-structure limitations. Maximum anticipated surface pressures for this well will not exceed the working pressure of the proposed BOP system. Please see the attached BOP diagram details 2000 psi equipment according to Onshore Order No. 2 even though the equipment will test to 3000 psi. The 2000 psi system allows deletion of the annular preventor and fulfills your requirements (note diagram No. 1). In addition, the following equipment will comprise the 2000 psi system:

1. Two rams with one blind and one pipe ram.
2. Kill line (2 inch maximum).
3. One kill line valve.
4. One choke line valve.
5. Two chokes (reference diagram No. 1).
6. Upper kelly cock valve with handle.
7. Safety valve and subs to fit all drill strings in use.
8. Two-inch minimum choke line.
9. Pressure gauge on choke manifold.
10. Fill-up line above the upper most preventor.
11. Rotating head.