

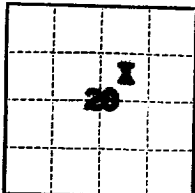
(SUBMIT IN TRIPLICATE)

Indian Agency Navajo

UNITED STATES
DEPARTMENT OF THE INTERIOR
GEOLOGICAL SURVEY

Allottee Tribal Lands

Lease No. 14-20-603-1449



SUNDRY NOTICES AND REPORTS ON WELLS

RECEIVED

NOTICE OF INTENTION TO DRILL		SUBSEQUENT REPORT OF WATER SHUT-OFF	
NOTICE OF INTENTION TO CHANGE PLANS		SUBSEQUENT REPORT OF SHOOTING OR ACIDIZING	
NOTICE OF INTENTION TO TEST WATER SHUT-OFF		SUBSEQUENT REPORT OF ALTERING CASING	
NOTICE OF INTENTION TO REDRILL OR REPAIR WELL		SUBSEQUENT REPORT OF REDRILLING OR REPAIR	
NOTICE OF INTENTION TO SHOOT OR ACIDIZE		SUBSEQUENT REPORT OF ABANDONMENT	
NOTICE OF INTENTION TO PULL OR ALTER CASING		SUPPLEMENTARY WELL HISTORY	
NOTICE OF INTENTION TO ABANDON WELL		<u>Subsequent report of well completion</u>	<u>X</u>

(INDICATE ABOVE BY CHECK MARK NATURE OF REPORT, NOTICE, OR OTHER DATA)

October 7

1957

Carson Unit

Well No. 32-20 is located 2100 ft. from N line and 1800 ft. from E line of sec. 20

NE 20

(1/4 Sec. and Sec. No.)

25N

(Twp.)

11W

(Range)

R17M

(Meridian)

Disti

(Field)

San Juan

(County or Subdivision)

New Mexico

(State or Territory)

Bally Basking

The elevation of the ~~subsurface~~ above sea level is 6429.8 ft.

DETAILS OF WORK

(State names of and expected depths to objective sands; show sizes, weights, and lengths of proposed casings; indicate mudlogging jobs, cementing points, and all other important proposed work)

- 8-16-57 Cemented 4 1/2" 9.5/ casing at 5015' with 150 sacks construction cement.
- 8-28-57 Ran Gamma Ray Cellar locator log.
- 8-29-57 Perforated four 1/2" holes/ft. 4852-70', 4882-90', 4925-30', 4937-47', 4957-66'. Ran tubing to 4835'.
- 9-3-57 Initial Production: Flowing 3 1/2 gpm. 64/64" bean, TP 180, CP 330, 1250 MCF/D (R) gas. Completed 9-3-57



I understand that this plan of work must receive approval in writing by the Geological Survey before operations may be commenced.

Company Shell Oil Company

Address 101 South Deland

Farmington, New Mexico

By B. W. Sheppard

B. W. Sheppard

Title Exploitation Engineer

11.10.19

11.10.19

11.10.19

11.10.19

11.10.19

11.10.19

11.10.19

11.10.19

11.10.19

11.10.19

11.10.19

11.10.19

11.10.19

11.10.19

11.10.19

11.10.19

11.10.19

11.10.19

11.10.19

11.10.19

11.10.19

11.10.19

11.10.19

11.10.19

11.10.19

11.10.19

11.10.19

11.10.19

11.10.19

11.10.19

11.10.19

11.10.19

11.10.19

11.10.19