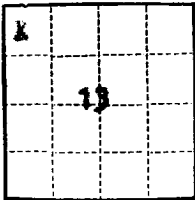


Form 9-331a  
(Feb. 1961)

(SUBMIT IN TRIPLICATE)

UNITED STATES  
DEPARTMENT OF THE INTERIOR  
GEOLOGICAL SURVEY

Land Office **Santa Fe, N. M.**  
Lease No. **SF 075064**  
Unit **Carson Unit**



SUNDRY NOTICES AND REPORTS ON WELLS

NOTICE OF INTENTION TO DRILL	SUBSEQUENT REPORT OF WATER SHUT-OFF	
NOTICE OF INTENTION TO CHANGE PLANS	SUBSEQUENT REPORT OF SHOOTING OR ACIDIZING	X
NOTICE OF INTENTION TO TEST WATER SHUT-OFF	SUBSEQUENT REPORT OF ALTERING CASING	
NOTICE OF INTENTION TO RE-DRILL OR REPAIR WELL	SUBSEQUENT REPORT OF RE-DRILLING OR REPAIR	
NOTICE OF INTENTION TO SHOOT OR ACIDIZE	SUBSEQUENT REPORT OF ABANDONMENT	
NOTICE OF INTENTION TO PULL OR ALTER CASING	SUPPLEMENTARY WELL HISTORY	
NOTICE OF INTENTION TO ABANDON WELL	Completion Report	X

(INDICATE ABOVE BY CHECK MARK NATURE OF REPORT, NOTICE, OR OTHER DATA)

December 18, 1959

Carson Unit

Well No. **11-13** is located **695.4** ft. from **N** line and **695.4** ft. from **W** line of sec. **13**  
**NW NW 13** **25 N** **12 W** **N.M.P.M.**  
 (1/4 Sec. and Sec. No.) (Twp.) (Range) (Meridian)  
**Bisti** **San Juan** **New Mexico**  
 (Field) (County or Subdivision) (State or Territory)

U. S. GEOLOGICAL SURVEY  
FARMINGTON, NEW MEXICO

The elevation of the **kelly bushing** above sea level is **6376** ft.

DETAILS OF WORK

(State names of and expected depths to objective sands; show sizes, weights, and lengths of proposed casings; indicate mudding jobs, cementing points, and all other important proposed work)

- 11-4-59 Ran and cemented (5021') 4-1/2", 9.5#, J-55 casing at 5030' with 150 sacks 220 cu. ft. Portland cement treated with 4# gal. Surface temperature 40° F ±, Formation temperature 120° F ±. Estimated strength of cement after 12 hrs., 1300 psi. Displaced with oil. Final pressure 1800 psi, OK.
- 11-10-59 Perforated four 1/2" holes/ft. 4869-96, 4901-08, 4948-62, 4966-76.
- 11-1-59 Spotted 200 gal. mud acid. Sand oil fractured with 50,000 gal. crude, 1#/gal. sand and 175 balls. Injection pressure 2200-2500 psi. Avg. rate 35 bbls./min.
- 11-12-59 Cleaned out frac sand to 5020'. Ran tubing to 4880'. Ran tubing and rods.
- 11-18-59
- 11-14-59 Pumped and recovered all load and frac oil, 1570 bbls.
- 11-16-59
- 11-10-59 **INITIAL PRODUCTION** Pumping 77 B/D gross, 77 B/D clean, out 0.5% gas/

150 MCF/D, GOR 1950

I understand that this plan of work must receive approval in writing by the Geological Survey before operations are commenced.

Company **SHELL OIL COMPANY**  
Address **P. O. Box 158**  
**Farmington, New Mexico**

By **B. J. Shepard**  
Title **Exploitation Engineer**

