

UNITED STATES
DEPARTMENT OF THE INTERIOR
BUREAU OF LAND MANAGEMENT
SUNDRY NOTICES AND REPORTS ON WELLS

Do not use this form for proposals to drill or to deepen or reentry to a different reservoir.
Use "APPLICATION FOR PERMIT--" for such proposals.

SUBMIT IN TRIPLICATE

1. Type of Well
☐ Oil Well ☐ Gas Well ☒ Other WIW

2. Name of Operator
Central Resources, Inc.

3. Address and Telephone No.
P.O. Box 1247, Bloomfield, New Mexico 87413 (505)-632-3476

4. Location of Well (Footage, Sec., T., R., M., or Survey Description)
660' FNL, 660' FEL, Sec 8, T25N, R12W

12. CHECK APPROPRIATE BOX(s) TO INDICATE NATURE OF NOTICE, REPORT, OR OTHER DATA
TYPE OF SUBMISSION

☒ Notice of Intent
☐ Subsequent Report
☐ Final Abandonment Notice

☒ Abandonment
☐ Recompletion
☐ Plugging Back
☐ Casing Repair
☐ Altering Casing
☐ Other

☐ Change of Plans
☐ New Construction
☐ Non-Routine Fracturing
☐ Water Shut-Off
☐ Conversion to Injection
☐ Dispose Water

(Note: Report results of multiple completion on Well Completion or Recompletion Report and Log form.)

13. Describe Proposed or Completed Operations (Clearly state all pertinent dates, including estimated date of starting any proposed work. If well is directionally drilled, give subsurface locations and measured and true vertical depths for all markers and zones pertinent to this work.)*

Central Resources, Inc. intends to plug the well in accordance with regulations. A CIBP was set with wireline on 2-26-97. The plug was tagged with wireline. Perforate and squeeze will be used unless casing can be recovered over the specified interval.

Proposed procedure:

- Notify the Farmington BLM office at 505-599-8907 24 hours prior to commencement of plugging operations.
- Spot a cement plug through tubing from 4700' - 4638' to cover Gallup top @ 4638'.
- Perforate and squeeze cement from 2085' - 1985' to cover the Mesaverde top @ 1985' inside and outside the casing.
- Perforate and squeeze cement from 1220' - 1120' to cover the Pictured Cliffs top @ 1120' inside and outside the casing.
- Perforate and squeeze cement from 890' - 790' to cover the Frutland top @ 790' inside and outside the casing.
- Perforate and squeeze cement from 375' - 300' to cover the surface casing shoe inside and outside the production casing.
- Perforate and squeeze cement from surface to 50' inside and outside the production casing.
- Cut wellhead and install dry hole marker. Clear and remediate location.

14. I hereby certify that the foregoing is true and correct.

Signed Rodney L. Seale Title District Manager Date June 21, 1999

(This space for Federal or State office use)

Approved by /s/ Duane W. Spencer Title Team Lead, Petroleum Management Date _____
Conditions of approval, if any:

Title 18 U.S.C. Section 1001, makes it a crime for any person knowingly and willfully to make to any department or agency of the United States any false, fictitious or fraudulent statements or representations as to any manner within its jurisdiction.

*See Instruction on Reverse Side

AMOCO

CENTRAL RESOURCES, INC.

Central Bisti Unit No. 13WI

Elevation: 6176'GL, 6186'KB

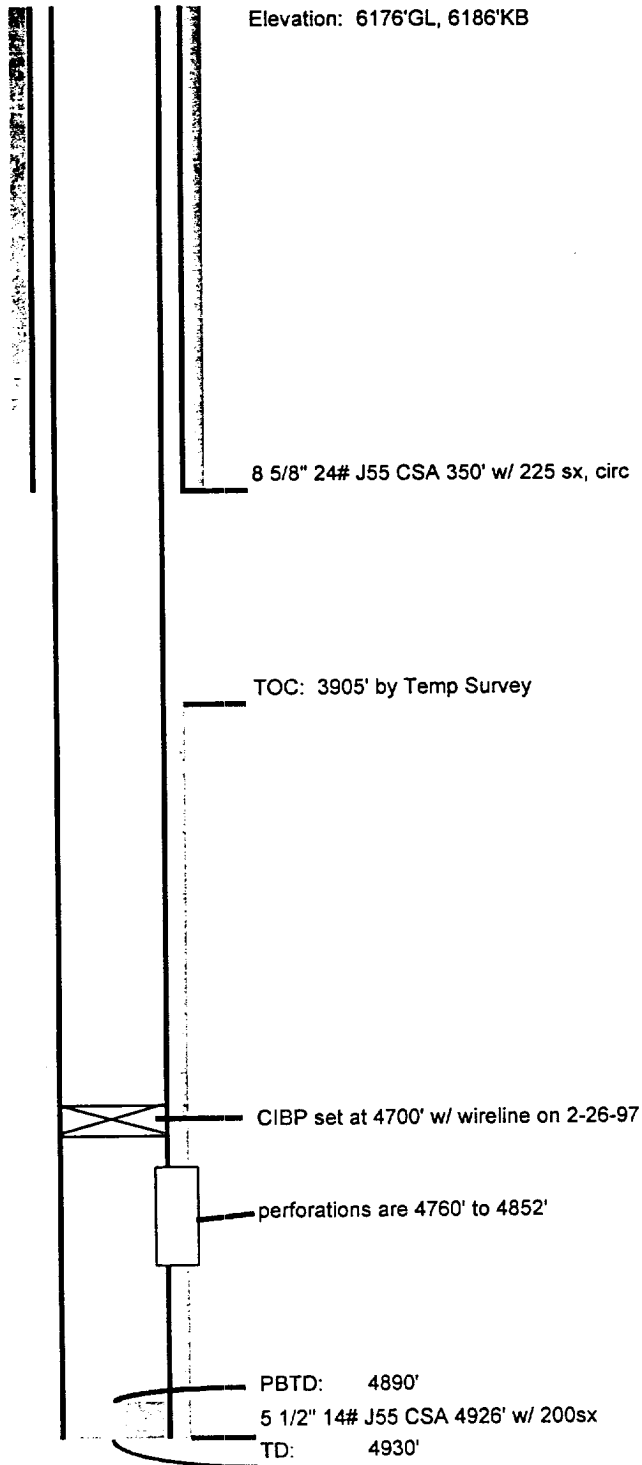
Location: 660' FNL, 660' FEL, Sec 8,
T25N, R12W, San Juan
County, New Mexico


Field: Bisti Lower Gallup

Zone: Lower Gallup

Perfs: CIBP over perfs

Spud Date: 8-18-56




Rod Seale
6-21-99