

(May 1963)

SUBMIT IN TRIPLICATE*
(Other instructions on
reverse side)Form approved.
Budget Bureau No. 42-R1425.UNITED STATES
DEPARTMENT OF THE INTERIOR
GEOLOGICAL SURVEY

APPLICATION FOR PERMIT TO DRILL, DEEPEN, OR PLUG BACK

1a. TYPE OF WORK

DRILL ☒DEEPEN ☐PLUG BACK ☐

b. TYPE OF WELL

OIL
WELL ☐GAS
WELL ☐

OTHER Wildcat

SINGLE
ZONE ☐MULTIPLE
ZONE ☐

2. NAME OF OPERATOR

Tenneco Oil Company

3. ADDRESS OF OPERATOR

Suite 1200 Lincoln Tower Bldg. - Denver, Colorado 80203

4. LOCATION OF WELL (Report location clearly and in accordance with any State requirements.)*

At surface

1500' F/SL and 990' F/WL

At proposed prod. zone

14. DISTANCE IN MILES AND DIRECTION FROM NEAREST TOWN OR POST OFFICE*

15. DISTANCE FROM PROPOSED*

LOCATION TO NEAREST
PROPERTY OR LEASE LINE, FT.
(Also to nearest drlg. unit line, if any)

16. NO. OF ACRES IN LEASE

17. NO. OF ACRES ASSIGNED
TO THIS WELL

160

18. DISTANCE FROM PROPOSED LOCATION*
TO NEAREST WELL, DRILLING, COMPLETED,
OR APPLIED FOR, ON THIS LEASE, FT.

19. PROPOSED DEPTH

12,000

20. ROTARY OR CABLE TOOLS

Rotary

21. ELEVATIONS (Show whether DF, RT, GR, etc.)

6321' GR

22. APPROX. DATE WORK WILL START*

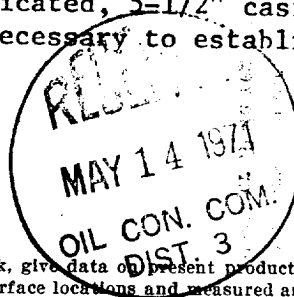
Upon Approval

23.

PROPOSED CASING AND CEMENTING PROGRAM

SIZE OF HOLE	SIZE OF CASING	WEIGHT PER FOOT	SETTING DEPTH	QUANTITY OF CEMENT
17-1/2	13-3/8	61	1000	Suff. to Circulate to surface
12-1/4	9-5/8	36 & 43.5	7000	Suff. to fill 500' above Dakota
7-7/8	5-1/2	15.5 & 17	12,000	Sufficient to fill 500' above shallowest pay zone.

Well to be drilled to approximate T.D. of 12,000'. A 26" hole will be drilled to 60' and set 20" culvert pipe for conductor & cemented. If hole condition is such that an intermediate string is required, 9-5/8" will be run as shown above. Well will be logged to T.D. and if production is indicated, 5-1/2" casing will be run to T.D., perforated, and formation treated as necessary to establish commercial production. B.O.P. to be tested each 24 hrs.



IN ABOVE SPACE DESCRIBE PROPOSED PROGRAM: If proposal is to deepen or plug back, give data on present productive zone and proposed new productive zone. If proposal is to drill or deepen directionally, give pertinent data on subsurface locations and measured and true vertical depths. Give blowout preventer program, if any.

24.

SIGNED

TITLE

Sr. Production Clerk

DATE

5/12/71

(This space for Federal or State office use)

PERMIT NO.

APPROVAL DATE

APPROVED BY

TITLE

DATE

CONDITIONS OF APPROVAL, IF ANY:

NSL for oil -

*See Instructions On Reverse Side

NEW MEXICO OIL CONSERVATION COMMISSION WELL LOCATION AND ACERAGE DEDICATION PLAT

All distances must be from the outer boundaries of the Section

Operator **TENNECO OIL COMPANY** Lease **PAH** Well No. **1**
 Unit Letter **L** Section **3** Township **25 NORTH** Range **11 WEST** County **SAN JUAN**
 Actual Postage Location of Well: **1500** feet from the **SOUTH** line and **990** feet from the **WEST** line
 Ground Level Elev. **6321.0** Producing Formation **Wildcat** Pool **Wildcat** Dedicated Acreage **160** Acres

1. Outline the acreage dedicated to the subject well by colored pencil or hatchure marks on the plat below.
2. If more than one lease is dedicated to the well, outline each and identify the ownership thereof (both as to working interest and royalty).
3. If more than one lease of different ownership is dedicated to the well, have the interests of all owners been consolidated by communitization, unitization, force-pooling, etc?

() Yes () No If answer is "yes," type of consolidation _____

If answer is "no," list the owners and tract descriptions which have actually consolidated. (Use reverse side of this form if necessary.) _____

No allowable will be assigned to the well until all interests have been consolidated (by communitization, unitization, forced-pooling, or otherwise) or until a non standard unit, eliminating such interests, has been approved by the Commission.

CERTIFICATION

I hereby certify that the information contained herein is true and complete to the best of my knowledge and belief.

B. G. Ford
 Name **G. A. Ford**

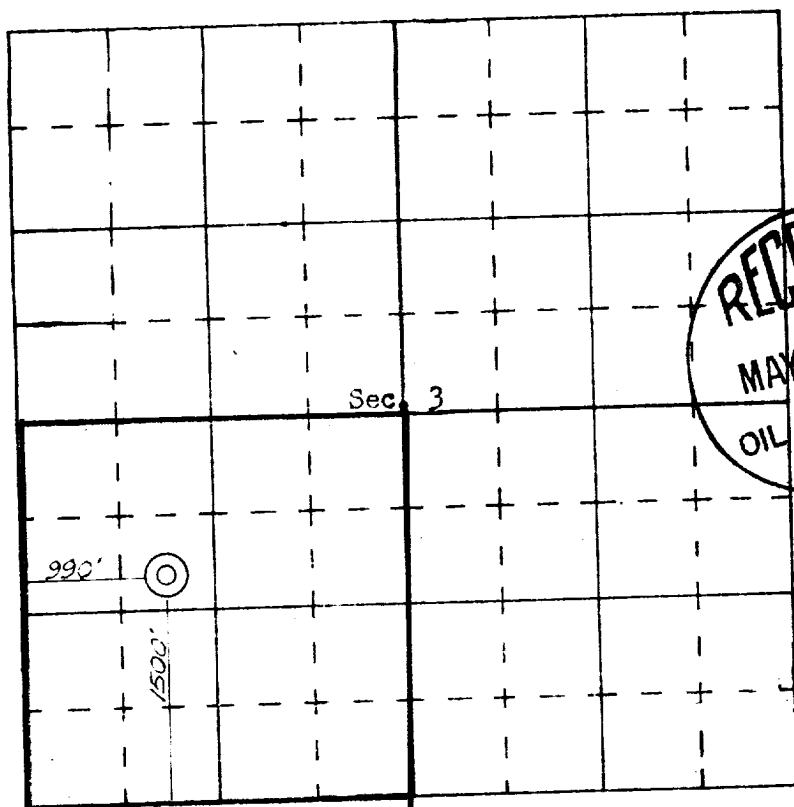
Position **Sr. Production Clerk**
 Company _____

Date **Tenneco Oil Company**
5/12.71

I hereby certify that the well location shown on this plat was plotted from field notes of actual surveys made by me or under my supervision, and that the same is true and correct to the best of my knowledge and belief.

22 April 1971
 Date Surveyed
James P. Leese
 Registered Professional Engineer
 and/or Land Surveyor
JAMES P. LEESE

1463
 Certificate No.



SCALE—4 INCHES EQUALS 1 MILE