

UNITED STATES  
DEPARTMENT OF THE INTERIOR  
GEOLOGICAL SURVEY

30-045-21385

## APPLICATION FOR PERMIT TO DRILL, DEEPEN, OR PLUG BACK

## 1a. TYPE OF WORK

DRILL ☒DEEPEN ☐PLUG BACK ☐

## b. TYPE OF WELL

OIL  
WELL ☐GAS  
WELL ☒

OTHER

SINGLE  
ZONE ☒MULTIPLE  
ZONE ☐

## 2. NAME OF OPERATOR

TENNECO OIL COMPANY

## 3. ADDRESS OF OPERATOR

Suite 1200 Lincoln Tower Bldg., Denver, Colorado 80203

## 4. LOCATION OF WELL (Report location clearly and in accordance with any State requirements.\*)

At surface

1450' FSL and 800' FWL

At proposed prod. zone

## 14. DISTANCE IN MILES AND DIRECTION FROM NEAREST TOWN OR POST OFFICE\*

## 15. DISTANCE FROM PROPOSED\*

LOCATION TO NEAREST  
PROPERTY OR LEASE LINE, FT.  
(Also to nearest drig. unit line, if any)

## 16. NO. OF ACRES IN LEASE

18. DISTANCE FROM PROPOSED LOCATION\*  
TO NEAREST WELL, DRILLING, COMPLETED,  
OR APPLIED FOR, ON THIS LEASE, FT.

## 19. PROPOSED DEPTH

6500'

## 21. ELEVATIONS (Show whether DF, RT, GR, etc.)

6488.0 GR.

17. NO. OF ACRES ASSIGNED  
TO THIS WELL

37.86

## 20. ROTARY OR CABLE TOOLS

Rotary

## 22. APPROX. DATE WORK WILL START\*

Upon Approval

## 23.

## PROPOSED CASING AND CEMENTING PROGRAM

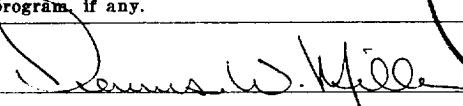
SIZE OF HOLE	SIZE OF CASING	WEIGHT PER FOOT	SETTING DEPTH	QUANTITY OF CEMENT
12-1/4"	8-5/8"	24#	+ 600'	sufficient to circulate
7-7/8"	5-1/2"	15.5#	+ 6500'	1st. stage: T/C above Gallup
				2nd. stage: T/C above Kirtland.

Well to be drilled to approximate TD of 6500', log, and if commercial production is indicated, run 5-1/2" casing to TD and cement in two stages to cover zones as indicated. Perforate casing and treat formation as necessary to establish production. B.O.P. to be tested each 24 hours.

IN ABOVE SPACE DESCRIBE PROPOSED PROGRAM: If proposal is to deepen or plug back, give data on present productive zone and proposed new productive zone. If proposal is to drill or deepen directionally, give pertinent data on surface locations and measured and true vertical depths. Give blowout preventer program, if any.

## 24.

SIGNED



TITLE Production Clerk

DATE

Nov. 26, 1973

(This space for Federal or State office use)

PERMIT NO.

APPROVAL DATE

APPROVED BY

TITLE

DATE

CONDITIONS OF APPROVAL, IF ANY:

Ok

\*See Instructions On Reverse Side

**NEW MEXICO OIL CONSERVATION COMMISSION  
WELL LOCATION AND ACERAGE DEDICATION PLAT**

All distances must be from the outer boundaries of the Section

Operator <b>TENNECO OIL COMPANY</b>			Lease <b>HANSON</b>		Well No. <b>2</b>
Unit Letter <b>L</b>	Section <b>6</b>	Township <b>25 NORTH</b>	Range <b>10 WEST</b>	County <b>SAN JUAN</b>	
Actual Footage Location of Well: <b>1450</b> feet from the <b>SOUTH</b> line and <b>800</b> feet from the <b>WEST</b> line					
Ground Level Elev. <b>6488.0</b>	Producing Formation <b>Dakota</b>		Pool <b>Basin Dakota</b>	Dedicated Acreage: <b>320 317.86 Acres</b>	

- 1 Outline the acreage dedicated to the subject well by colored pencil or hachure marks on the plat below.
- 2 If more than one lease is dedicated to the well, outline each and identify the ownership thereof (both as to working interest and royalty),
- 3 If more than one lease of different ownership is dedicated to the well, have the interests of all owners been consolidated by communitization; unitization, force-pooling, etc?

( ) Yes (X) No answer is "yes," type of consolidation .....

If answer is "no," list the owners and tract descriptions which have actually consolidated. (Use reverse side of this form if necessary.) .....

No allowable will be assigned to the well until all interests have been consolidated (by communitization, unitization, forced-pooling, or otherwise) or until a non standard unit, eliminating such interests, has been approved by the Commission.

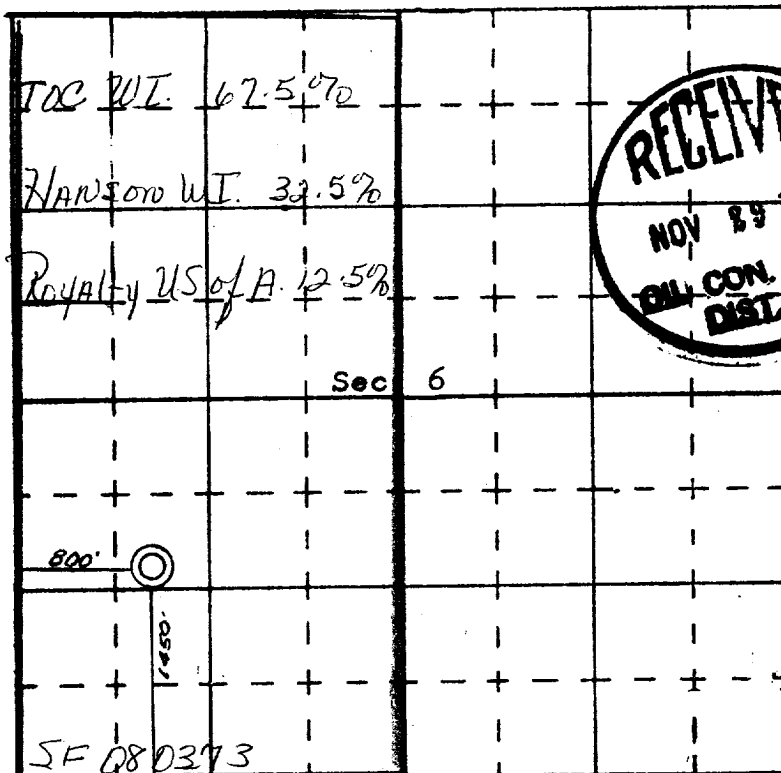
**CERTIFICATION**

I hereby certify that the information contained herein is true and complete to the best of my knowledge and belief.

*Dennis W. Miller*  
 Name Dennis W. Miller  
 Position Production Clerk  
 Company Tenneco Oil Company  
 Date Nov. 26, 1973

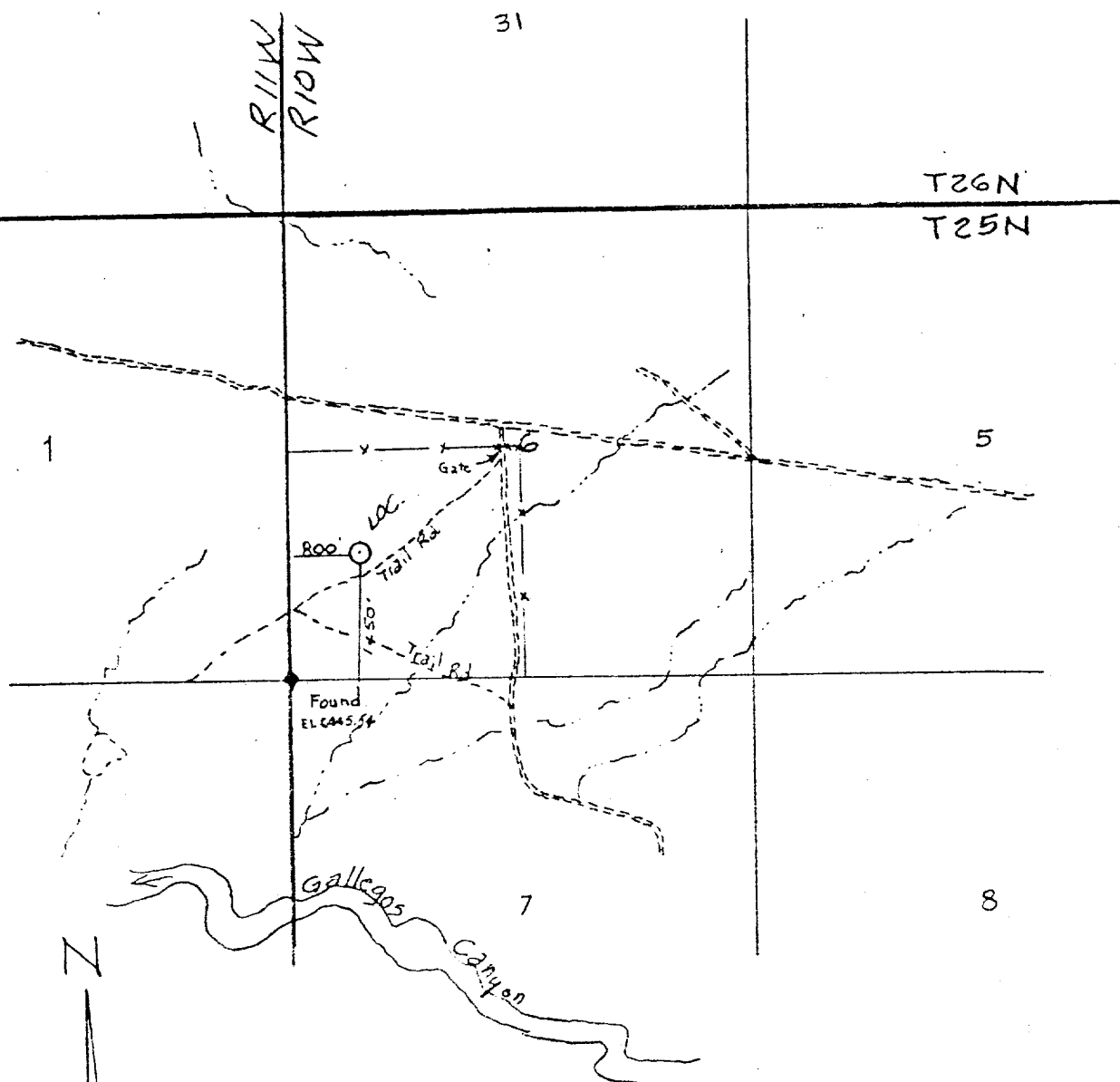
I hereby certify that the well location shown on this plat was plotted from field notes of actual surveys made by me or under my supervision, and that the same is true and correct to the best of my knowledge and belief.

*James P. Meese*  
 Date Surveyed 8 October 1973  
 Registered Professional Engineer  
 and/or Land Surveyor  
**JAMES P. MESE**  
 1463 S.P. LEASE  
 Certificate No. \_\_\_\_\_



SCALE—4 INCHES EQUALS 1 MILE

SAN JUAN ENGINEERING COMPANY, FARMINGTON, N. M.

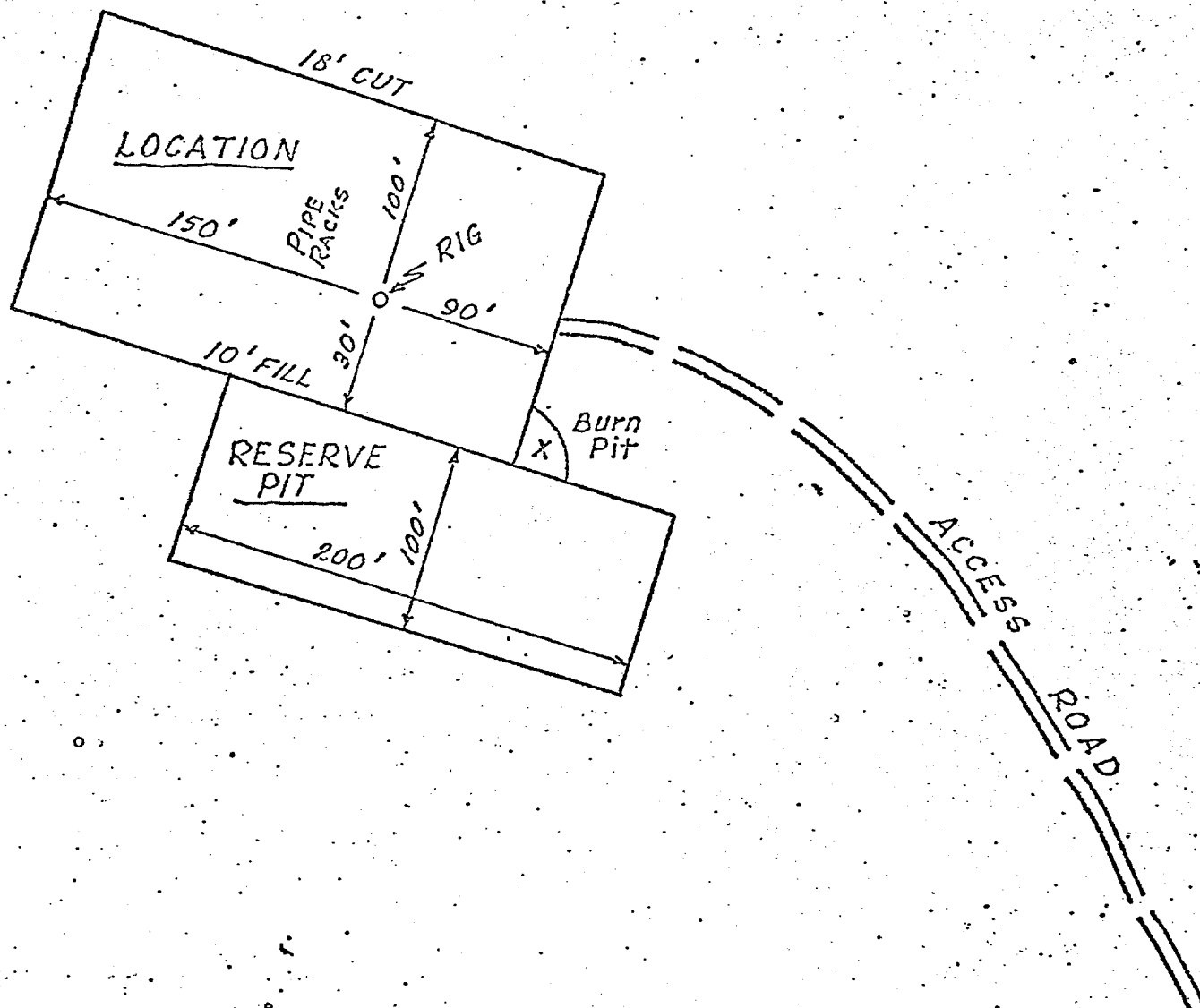


VICINITY MAP FOR  
TENNECO OIL COMPANY  
showing  
Well Location in SW/4 of sec.  
6, T25N, R10W, N.M.P.M.,  
San Juan County, New  
Mexico

scale: 1"=2000  
Date: 9 Oct. 1973

San Juan Engineering Company

Farmington, New Mexico





November 26, 1973

U.S. Geological Survey  
P. O. Box 959  
Farmington, New Mexico 87401

Re: Application for Permit  
to drill Hanson No. 2,  
SW/4, Sec. 6, T25N, R10W,  
San Juan County, New Mexico

Gentlemen:

Attached are eight copies each of the Notice of Intention to Drill, Well Location and Acreage Dedication Plat and Vicinity Map showing existing roads, pipelines, flowlines, proposed roads, etc., relative to the above captioned well.

The water we use for drilling will come from the Shell Bisti Operations. Waste disposal will be buried in the Burn Pit or Reserve Pit. There will be no camp or airstrip associated with the drilling of the well. Upon completion or abandonment of this well the location will be cleaned and levelled and a dry hole marker place, if applicable.

Yours very truly,

TENNECO OIL COMPANY

A handwritten signature in cursive script that reads "D. D. Myers".

D. D. Myers  
Assistant Division  
Production Manager

DWM/ar

Attachments:

