

UNITED STATES
DEPARTMENT OF THE INTERIOR
GEOLOGICAL SURVEY

30-045-21396

APPLICATION FOR PERMIT TO DRILL, DEEPEN, OR PLUG BACK

1a. TYPE OF WORK

DRILL ☒DEEPEN ☐PLUG BACK ☐

b. TYPE OF WELL

OIL
WELL ☒GAS
WELL ☐

OTHER

SINGLE
ZONE ☒MULTIPLE
ZONE ☐

2. NAME OF OPERATOR

Universal Resources Corporation

3. ADDRESS OF OPERATOR 910 Nat'l Foundation W. Bldg., 3555 NW 58th.

St., Okla. City, Okla. 73112

4. LOCATION OF WELL (Report location clearly and in accordance with any State requirements.)*

At surface

NW NW Section 7-25N-10W (890' FNL & 790' FWL)

At proposed prod. zone

Same as above.

14. DISTANCE IN MILES AND DIRECTION FROM NEAREST TOWN OR POST OFFICE*

25 miles North of Bloomfield, New Mexico

15. DISTANCE FROM PROPOSED*

LOCATION TO NEAREST
PROPERTY OR LEASE LINE, FT.
(Also to nearest drlg. unit line, if any)

790'

16. NO. OF ACRES IN LEASE

320'

17. NO. OF ACRES ASSIGNED
TO THIS WELL

320'

317.84'

18. DISTANCE FROM PROPOSED LOCATION*

TO NEAREST WELL, DRILLING, COMPLETED,
OR APPLIED FOR, ON THIS LEASE, FT.

19. PROPOSED DEPTH

6600'

20. ROTARY OR CABLE TOOLS

Rotary

21. ELEVATIONS (Show whether DF, RT, GR, etc.)

GR 6422.02'

22. APPROX. DATE WORK WILL START*

Upon approval

23.

PROPOSED CASING AND CEMENTING PROGRAM

SIZE OF HOLE	SIZE OF CASING	WEIGHT PER FOOT	SETTING DEPTH	QUANTITY OF CEMENT
12-1/4"	8-5/8"	24#	200'	150 sacks
7-7/8"	4-1/2" or 5-1/2"	18.5# or 17#	TD	300 sacks

It is proposed to drill a 6600' Dakota Sand Test, using mud as a circulating fluid. Will drill a 12-1/4" hole to 200' setting 8-5/8" casing @ 200' and cementing w/150 sacks cement. Drill a 7-7/8" hole to 6600'. ES Induction & GR density logs will be run. If productive 4-1/2" or 5-1/2" casing will be run and cemented. Productive zones will be perforated, fractured and treated.



IN ABOVE SPACE DESCRIBE PROPOSED PROGRAM: If proposal is to deepen or plug back, give data on present productive zone and proposed new productive zone. If proposal is to drill or deepen directionally, give pertinent data on subsurface locations and measured and true vertical depths. Give blowout preventer program, if any.

24.

Signature

TITLE

Vice President

DATE

12-31-73

(This space for Federal or State office use)

PERMIT NO.

APPROVAL DATE

APPROVED BY

TITLE

DATE

CONDITIONS OF APPROVAL, IF ANY:

*See Instructions On Reverse Side

**NEW MEXICO OIL CONSERVATION COMMISSION
WELL LOCATION AND ACERAGE DEDICATION PLAT**

All distances must be from the outer boundaries of the Section

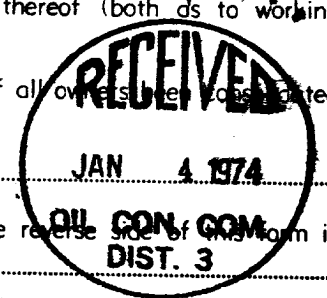
Operator Universal Resources Corp.			Lease Grigsby Federal		Well No. 1
Unit Letter D	Section 7	Township 25 North	Range 10 West	County San Juan County, New Mexico	
Actual Footage Location of Well: 890 feet from the North line and 790 feet from the West line					
Ground Level Elev. 6422.02	Producing Formation Dakota		Pool Pasin	Dedicated Acreage: 317.84 Acres	

1. Outline the acreage dedicated to the subject well by colored pencil or hachure marks on the plat below.
2. If more than one lease is dedicated to the well, outline each and identify the ownership thereof (both ds to working interest and royalty),
3. If more than one lease of different ownership is dedicated to the well, have the interests of all owners been consolidated by communitization, unitization, force-pooling, etc?

() Yes () No If answer is "yes," type of consolidation

If answer is "no," list the owners and tract descriptions which have actually consolidated. (Use reverse side of this form if necessary.)

No allowable will be assigned to the well until all interests have been consolidated (by communitization, unitization, forced-pooling, or otherwise) or until a non standard unit, eliminating such interests, has been approved by the Commission.



CERTIFICATION

I hereby certify that the information contained herein is true and complete to the best of my knowledge and belief.

Warren G. Hicks
Name

Warren G. Hicks

Position

Vice President

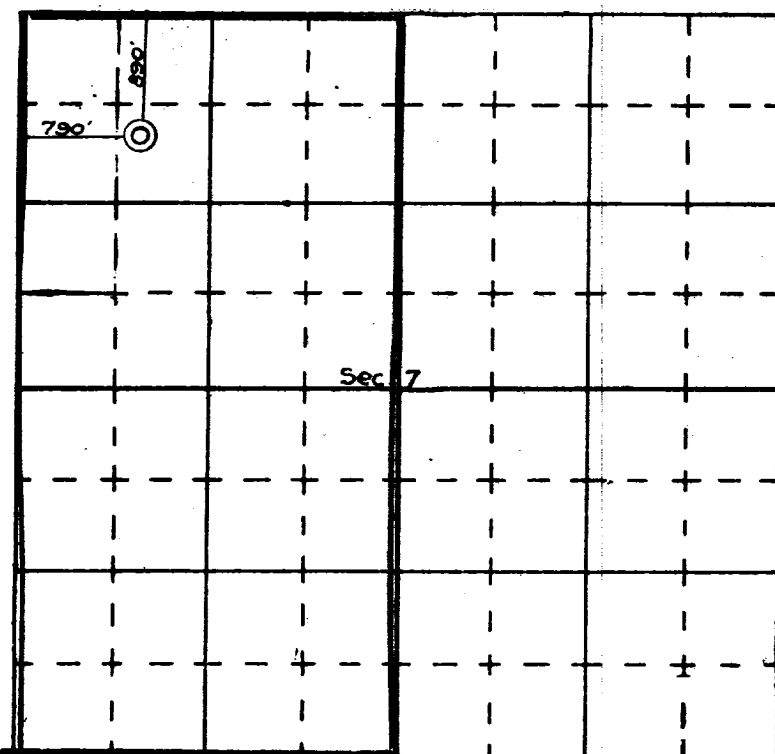
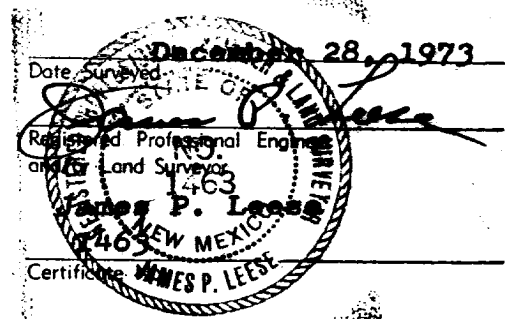
Company

Universal Resources Corp.

Date

12-31-73

I hereby certify that the well location shown on this plat was plotted from field notes of actual surveys made by me or under my supervision, and that the same is true and correct to the best of my knowledge and belief.



N