

UNITED STATES
DEPARTMENT OF THE INTERIOR
GEOLOGICAL SURVEY

30-045-21417
NM 16467

APPLICATION FOR PERMIT TO DRILL, DEEPEN, OR PLUG BACK

1a. TYPE OF WORK

DRILL ☒

DEEPEN ☐

PLUG BACK ☐

b. TYPE OF WELL

OIL
WELL ☐

GAS
WELL ☒

OTHER

SINGLE
ZONE ☒

MULTIPLE
ZONE ☐

2. NAME OF OPERATOR

TENNECO OIL COMPANY

3. ADDRESS OF OPERATOR

Suite 1200 Lincoln Tower Bldg., Denver, Colorado 80203

4. LOCATION OF WELL (Report location clearly and in accordance with any State requirements.*)

At surface

1615' FNL and 1025' FEL

At proposed prod. zone

14. DISTANCE IN MILES AND DIRECTION FROM NEAREST TOWN OR POST OFFICE*

15. DISTANCE FROM PROPOSED*

LOCATION TO NEAREST
PROPERTY OR LEASE LINE, FT.
(Also to nearest drlg. unit line, if any)

16. NO. OF ACRES IN LEASE

17. NO. OF ACRES ASSIGNED
TO THIS WELL

18. DISTANCE FROM PROPOSED LOCATION*
TO NEAREST WELL, DRILLING, COMPLETED,
OR APPLIED FOR, ON THIS LEASE, FT.

19. PROPOSED DEPTH

6335'

20. ROTARY OR CABLE TOOLS

Rotary

21. ELEVATIONS (Show whether DF, RT, GR, etc.)

6491' GR

22. APPROX. DATE WORK WILL START*

Upon Approval

23. PROPOSED CASING AND CEMENTING PROGRAM

SIZE OF HOLE	SIZE OF CASING	WEIGHT PER FOOT	SETTING DEPTH	QUANTITY OF CEMENT
12-1/4"	8-5/8"	24#	+ 600'	sufficient to circulate
7-7/8"	5-1/2"	15.5#	+ 6335'	1st. stage: T/C above Gallup
				2nd. stage: T/C above Pictured Cliffs.

Well to be drilled to approximate TD of 6335', log, and if commercial production is indicated run 5-1/2" casing to TD and cement in two stages to cover zones as indicated. Perforate casing and treat formation as necessary to establish production. B. O. P. to be tested each 24 hours.

RECEIVED

JAN 21 1974

U. S. GEOLOGICAL SURVEY
FARMINGTON, N. M.

IN ABOVE SPACE DESCRIBE PROPOSED PROGRAM: If proposal is to deepen or plug back, give data on present productive zone and proposed new productive zone. If proposal is to drill or deepen directionally, give pertinent data on subsurface locations, dimensions and true vertical depths. Give blowout preventer program, if any.

24.

SIGNED

TITLE

Production Clerk

Jan. 16, 1974

(This space for Federal or State office use)

PERMIT NO.

APPROVAL DATE

APPROVED BY

TITLE

DATE

CONDITIONS OF APPROVAL, IF ANY:

**NEW MEXICO OIL CONSERVATION COMMISSION
WELL LOCATION AND ACERAGE DEDICATION PLAT**

All distances must be from the outer boundaries of the Section

Operator TENNECO OIL COMPANY			Lease CANYON		Well No. 9
Unit Letter H	Section 1	Township 25 NORTH	Range 11 WEST	County SAN JUAN	
Actual Footage Location of Well: 1615 feet from the NORTH line and 1025 feet from the EAST line					
Ground Level Elev. 6491	Producing Formation DAKOTA		Pool BASIN DAKOTA		Dedicated Acreage: 320.42 Acres

1. Outline the acreage dedicated to the subject well by colored pencil or hachure marks on the plat below.
2. If more than one lease is dedicated to the well, outline each and identify the ownership thereof (both as to working interest and royalty).
3. If more than one lease of different ownership is dedicated to the well, have the interests of all owners been consolidated by communitization, unitization, force-pooling, etc?

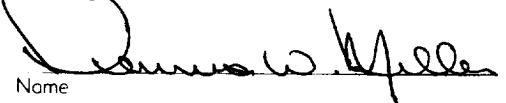
(☒ Yes () No If answer is "yes," type of consolidation Communitization in progress

If answer is "no," list the owners and tract descriptions which have actually consolidated. (Use reverse side of this Form if necessary.)

No allowable will be assigned to the well until all interests have been consolidated (by communitization, unitization, forced-pooling, or otherwise) or until a non standard unit, eliminating such interests, has been approved by the Commission.

CERTIFICATION

I hereby certify that the information contained herein is true and complete to the best of my knowledge and belief.


Name

Dennis W. Miller

Position

Production Clerk

Company

Tenneco Oil Company

Date

January 16, 1974


I hereby certify that the well location shown on this plat was plotted from field notes of actual surveys made by me or under my supervision, and that the same is true and correct to the best of my knowledge and belief.

12 January 1974

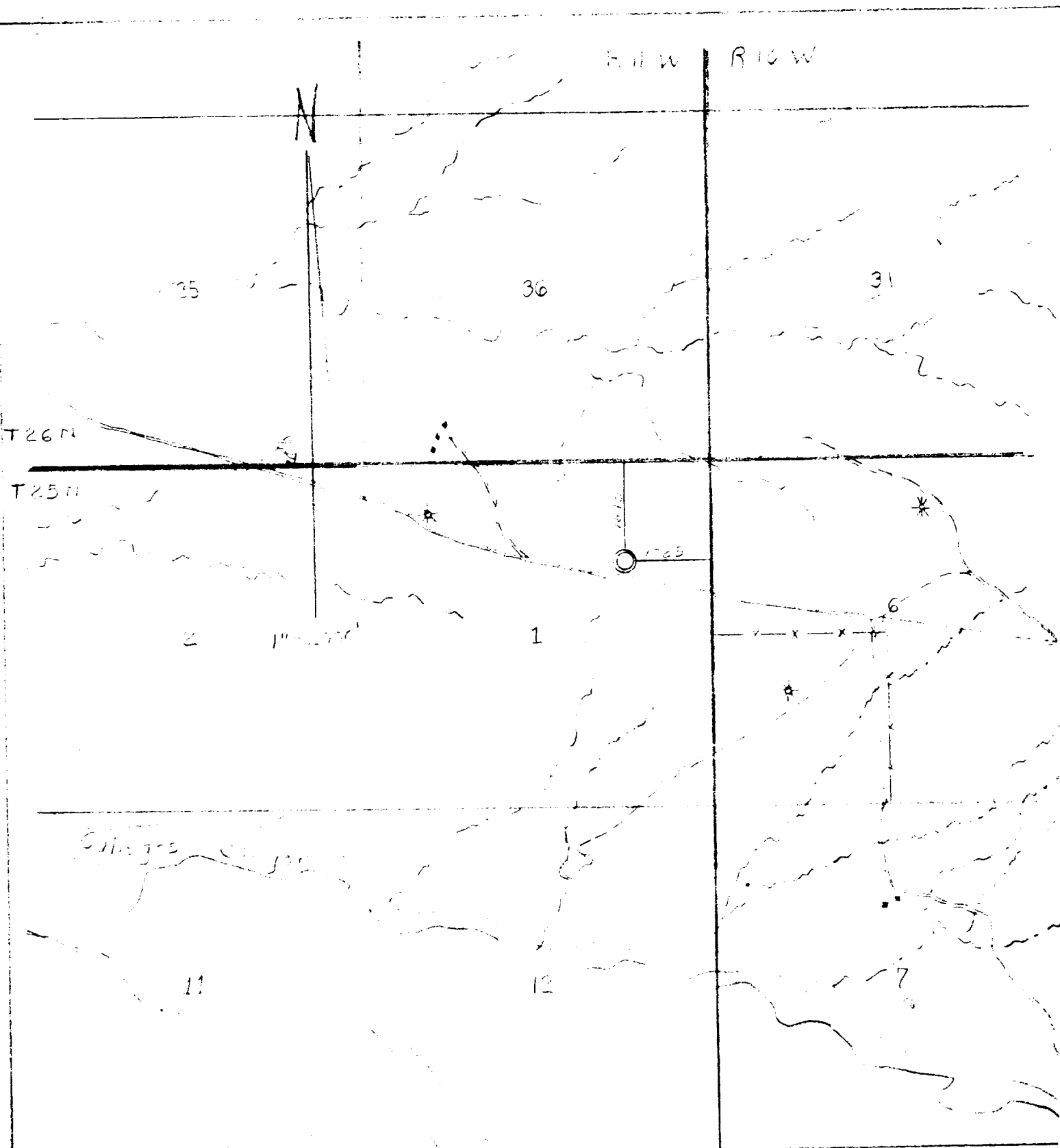
Date Surveyed


Registered Professional Engineer
and/or Land Surveyor **James P. Leese**

Certificate No. **1463**

<p>TOC WI - 100% USA Roy - 12.5%</p> <p>NM 16467</p>	<p>GETTY WI - 100% USA Roy - 12.5%</p> <p>SF 028978</p>
<p>1025</p> 	
<p>1</p>	

N



VICINITY MAP FOR
 TENNECO OIL COMPANY
 Well location in NE/4 SE/4
 Sec. 1, T25N, R11W, 11th N.
 San Juan County, N. Mex.
 January 1974

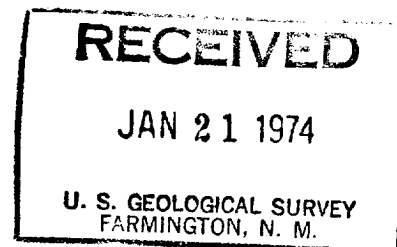
San Juan County, N. Mex.

Tenneco Oil
A Tenneco Company

Suite 1200
Lincoln Tower Building
Denver, Colorado 80203
(303) 292-9920



January 16, 1974



U. S. Geological Survey
P. O. Box 959
Farmington, New Mexico 87401

Re: Application for Permit
to drill Canyon No. 9
NE/4, Sec. 1, T25N,
R11W San Juan County,
New Mexico

Gentlemen:

Attached are eight copies each of the Notice of Intention to Drill, Well Location and Acreage Dedication Plat and Vicinity Map showing existing roads, etc., relative to the above captioned well.

The water we use for drilling will come from the Shell Bisti Operations. Waste disposal will be buried in the Burn Pit or Reserve Pit. There will be no camp or airstrip associated with the drilling of the well. Upon completion or abandonment of this well, the location will be cleaned and levelled and a dry hole marker placed, if applicable.

Yours very truly,

TENNECO OIL COMPANY

A handwritten signature in cursive script, appearing to read "D. D. Myers".

D. D. Myers
Assistant Division
Production Manager

DWM/ar

Attachments: