

UNITED STATES
DEPARTMENT OF THE INTERIOR
GEOLOGICAL SURVEY

APPLICATION FOR PERMIT TO DRILL, DEEPEN, OR PLUG BACK

1a. TYPE OF WORK

DRILL ☒

DEEPEN ☐

PLUG BACK ☐

b. TYPE OF WELL

OIL WELL ☐

GAS WELL ☒

OTHER

SINGLE ZONE ☒

MULTIPLE ZONE ☐

2. NAME OF OPERATOR

Tenneco Oil Company

3. ADDRESS OF OPERATOR

Suite 1200 Lincoln Tower Bldg., Denver, Colorado 80203

4. LOCATION OF WELL (Report location clearly and in accordance with any State requirements.)*

At surface

1450' FNL and 800' FWL

At proposed prod. zone

14. DISTANCE IN MILES AND DIRECTION FROM NEAREST TOWN OR POST OFFICE*

15. DISTANCE FROM PROPOSED*

LOCATION TO NEAREST PROPERTY OR LEASE LINE, FT. (Also to nearest drlg. unit line, if any)

16. NO. OF ACRES IN LEASE

320

17. NO. OF ACRES ASSIGNED TO THIS WELL

320

18. DISTANCE FROM PROPOSED LOCATION*

TO NEAREST WELL, DRILLING, COMPLETED, OR APPLIED FOR, ON THIS LEASE, FT.

19. PROPOSED DEPTH

6130'

20. ROTARY OR CABLE TOOLS

Rotary

21. ELEVATIONS (Show whether DF, RT, GR, etc.)

6409' GR

22. APPROX. DATE WORK WILL START*

Upon Approval

23. PROPOSED CASING AND CEMENTING PROGRAM

SIZE OF HOLE	SIZE OF CASING	WEIGHT PER FOOT	SETTING DEPTH	QUANTITY OF CEMENT
12-1/4"	8-5/8"	24#	± 600'	Sufficient to circulate
7-7/8"	5-1/2"	15.5#	± 6130'	1st Stage: T/C above Gallup
				2nd Stage: T/C above Pictured Cliffs

Well to be drilled to approximate TD of 6130', log, and if commercial production is indicated, run 5-1/2" casing to TD and cement in two stages to cover zones as indicated. Perforate casing and treat for-
mation as necessary to establish production. B.O.P. to be tested
each 24 hours.



IN ABOVE SPACE DESCRIBE PROPOSED PROGRAM: If proposal is to deepen or plug back, give data on present productive zone and proposed new productive zone. If proposal is to drill or deepen directionally, give pertinent data on subsurface locations and measured and true vertical depths. Give blowout preventer program, if any.

24.

SIGNED Saul X. Rogers

TITLE Production Clerk

DATE 5/13/74

(This space for Federal or State office use)

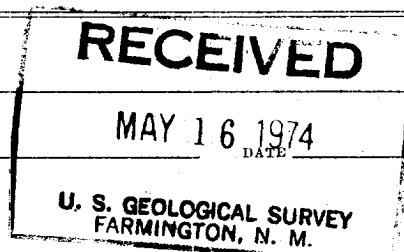
PERMIT NO.

APPROVAL DATE

APPROVED BY en

TITLE

CONDITIONS OF APPROVAL, IF ANY:



All distances must be from the outer boundaries of the Section

1. Outline the acreage dedicated to the subject well by colored pencil or hatchure marks on the plat below.
2. If more than one lease is dedicated to the well, outline each and identify the ownership thereof (with respect to working interest and royalty),
3. If more than one lease of different ownership is dedicated to the well, have the interests of all owners been communitized by communitization, unitization, force-pooling, etc?

No allowable will be assigned to the well until all interests have been consolidated (by communitization, unitization, forced-pooling, or otherwise) or until a non standard unit, eliminating such interests, has been approved by the Commission.

1463

PROFESSIONAL ENGINEER & ARCHT.
STATE OF NEW YORK
January 1914

Date Surveyed _____

Registered Professional Engineer
and/or Land Surveyor **James P. Leese**

1463 JAMES P. LEESE

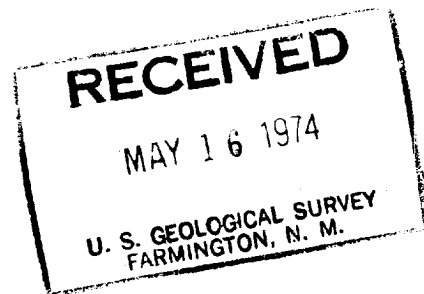
Certificate No. _____

Tenneco Oil
A Tenneco Company

Suite 1200
Lincoln Tower Building
Denver, Colorado 80203
(303) 292-9920



May 13, 1974



U. S. Geological Survey
P. O. Box 959
Farmington, New Mexico 87401

Re: Application for Permit to Drill
Canyon No. 12, NW/4, Sec. 13,
T 25N, R 11W, San Juan County,
New Mexico

Gentlemen:

Attached are eight copies each of the Notice of Intention to Drill, Well Location and Acreage Dedication Plat, and Vicinity Map showing existing roads, pipelines, flowlines, proposed roads, etc., related to the above captioned well.

The water we use for drilling will come from the Shell Bisti Operations. Waste disposal will be buried in the burn pit or reserve pit. There will be no camp or airstrip associated with the drilling of this well. Upon completion or abandonment of this well, the location will be cleaned and levelled, and a dry hole marker placed, if applicable.

Very truly yours,

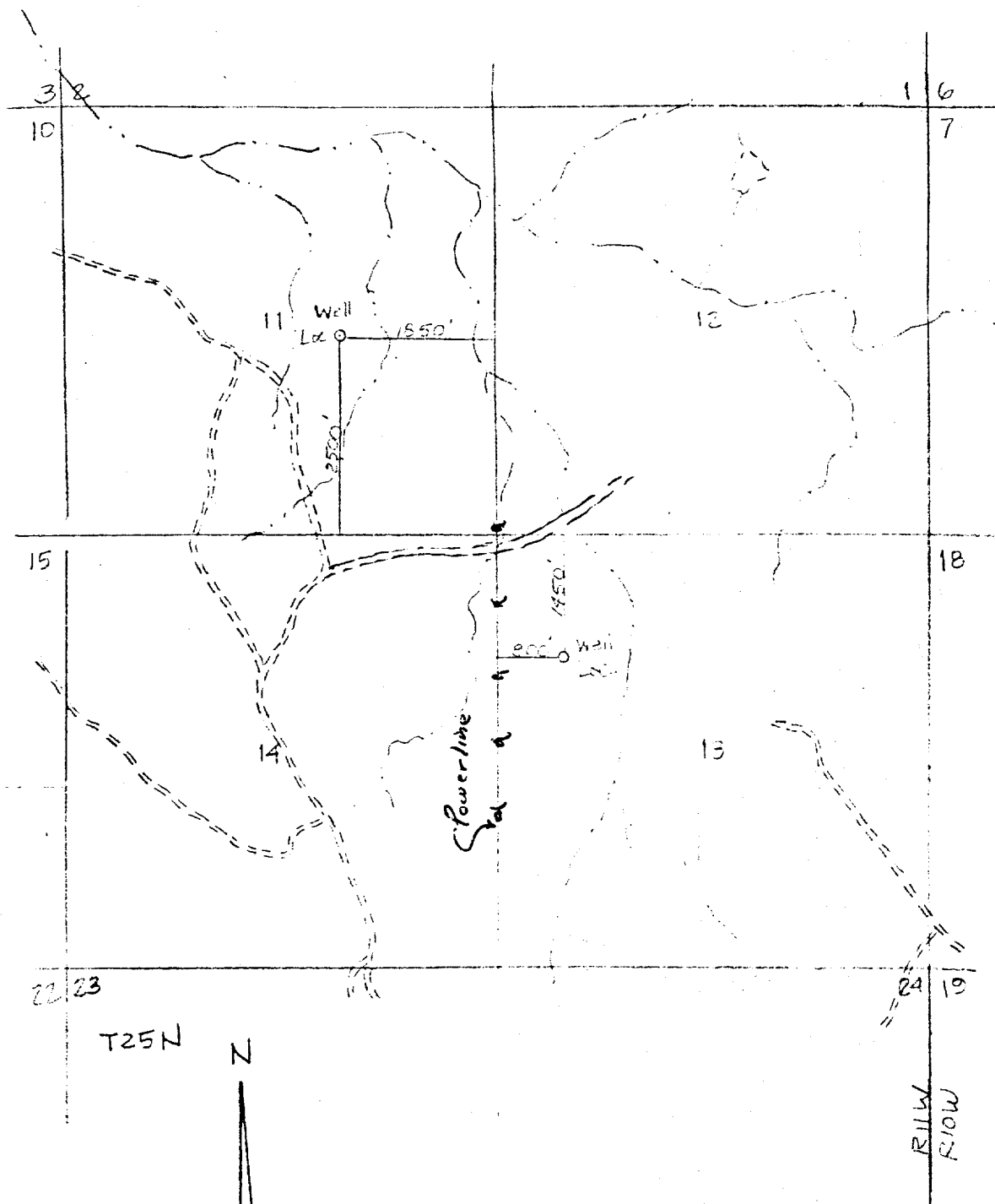
TENNECO OIL COMPANY

A handwritten signature in cursive script that reads "D. D. Myers".

D. D. Myers
Assistant Division
Production Manager

PLR/ka

Attachments:



T25N

N

1" = 2000'

VICINITY MAP FOR
TENNECO OIL CO.
 SHOWING

Well Locations in the NW/4 SE/4
 of Sec. 11 & SW/4 NW/4 of Sec. 13
 T25N, R11W, N.H.P.H., San Juan
 Co. New Mexico

Scale: 1" = 2000' Date: 12/31/73

San Juan Engineering Company

