

UNITED STATES  
DEPARTMENT OF THE INTERIOR  
GEOLOGICAL SURVEY

30-045-21507

5. LEASE DESIGNATION AND SERIAL NO.

NM 8007

6. IF INDIAN, ALLOTTEE OR TRIBE NAME

7. UNIT AGREEMENT NAME

8. FARM OR LEASE NAME

Grigsby-Federal

9. WELL NO.

2

10. FIELD AND POOL, OR WILDCAT

Basin Dakota

11. SEC., T., R., M., OR BLK.  
AND SURVEY OR AREA

Sec. 7, T25N, R10W

12. COUNTY OR PARISH 13. STATE

San Juan

NM

## APPLICATION FOR PERMIT TO DRILL, DEEPEN, OR PLUG BACK

1a. TYPE OF WORK

DRILL ☒

DEEPEN ☐

PLUG BACK ☐

b. TYPE OF WELL

OIL  
WELL ☐

GAS  
WELL ☒

OTHER

SINGLE  
ZONE ☐

MULTIPLE  
ZONE ☐

2. NAME OF OPERATOR

Universal Resources Corporation

3. ADDRESS OF OPERATOR

Box 234, Farmington, New Mexico 87401

4. LOCATION OF WELL (Report location clearly and in accordance with any State requirements.\*)  
At surface

1000' FSL - 1640' FWL

At proposed prod. zone

14. DISTANCE IN MILES AND DIRECTION FROM NEAREST TOWN OR POST OFFICE\*

25 miles south of Bloomfield, New Mexico

15. DISTANCE FROM PROPOSED\*

LOCATION TO NEAREST  
PROPERTY OR LEASE LINE, FT.  
(Also to nearest drlg. unit line, if any)

790'

16. NO. OF ACRES IN LEASE

17. NO. OF ACRES ASSIGNED  
TO THIS WELL

320 318.85

18. DISTANCE FROM PROPOSED LOCATION\*

TO NEAREST WELL, DRILLING, COMPLETED,  
OR APPLIED FOR, ON THIS LEASE, FT.

3500' approx

19. PROPOSED DEPTH

6250'

20. ROTARY OR CABLE TOOLS

Rotary

21. ELEVATIONS (Show whether DF, RT, GR, etc.)

6391' GR

22. APPROX. DATE WORK WILL START\*

6-12-74

23. PROPOSED CASING AND CEMENTING PROGRAM

SIZE OF HOLE	SIZE OF CASING	WEIGHT PER FOOT	SETTING DEPTH	QUANTITY OF CEMENT
12-1/4"	8-5/8"	24#	200'	150 sx
7-7/8"	4-1/2"	10.5#	6250'	600 sx

It is proposed to drill a 6250' Dakota Sand Test using mud as a circulating fluid. Drill a 12-1/4" hole to 200' setting 8-5/8" casing at 200' and cementing with 150 sx cement. Drill a 7-7/8" hole to 6250'. IES and Density logs will be run. If productive 4-1/2" casing will be run and cemented. Dakota will be selectively perforated, stimulated, tubing will be run, and well completed as Dakota gas well.

IN ABOVE SPACE DESCRIBE PROPOSED PROGRAM: If proposal is to deepen or plug back, give data on present productive zone and proposed new productive zone. If proposal is to drill or deepen directionally, give pertinent data on subsurface locations and measured and true vertical depths. Give blowout preventer program, if any.

24.

SIGNED Original signed by T. A. Dugan  
Thomas A. Dugan

TITLE Engineer

DATE 6-10-74

(This space for Federal or State office use)

PERMIT NO.

APPROVAL DATE

APPROVED BY

TITLE

DATE

CONDITIONS OF APPROVAL, IF ANY:

NEW MEXICO OIL CONSERVATION COMMISSION  
WELL LOCATION AND ACREAGE DEDICATION PLAT

Form C-102  
Supersedes C-128  
Effective 1-1-65

All distances must be from the outer boundaries of the Section.

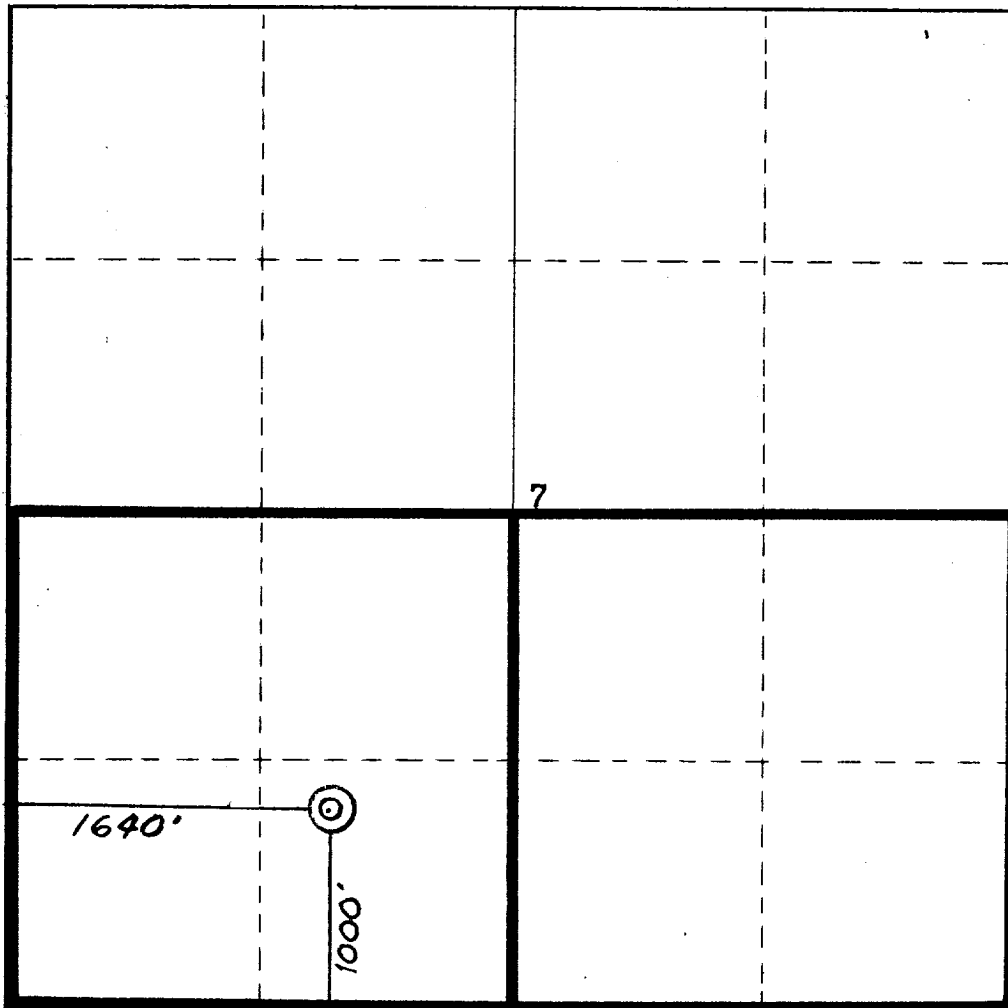
Operator <b>UNIVERSAL RESOURCES</b>			Lease <b>GRIGSBY FEDERAL</b>		Well No. <b>2</b>
Unit Letter <b>N</b>	Section <b>7</b>	Township <b>25 NORTH</b>	Range <b>10 WEST</b>	County <b>SAN JUAN</b>	
Actual Footage Location of Well: <b>1000</b> feet from the <b>SOUTH</b> line and <b>1640</b> feet from the <b>WEST</b> line					
Ground Level Elev. <b>6391</b>	Producing Formation <b>Dakota</b>		Pool <b>Basin Dakota</b>	Dedicated Acreage: <b>318.85</b> <del>520</del> Acres	

1. Outline the acreage dedicated to the subject well by colored pencil or hachure marks on the plat below.
2. If more than one lease is dedicated to the well, outline each and identify the ownership thereof (both as to working interest and royalty).
3. If more than one lease of different ownership is dedicated to the well, have the interests of all owners been consolidated by communitization, unitization, force-pooling, etc?

☐ Yes ☒ No If answer is "yes," type of consolidation \_\_\_\_\_

If answer is "no," list the owners and tract descriptions which have actually been consolidated. (Use reverse side of this form if necessary.) Leases will be communitized.

No allowable will be assigned to the well until all interests have been consolidated (by communitization, unitization, forced-pooling, or otherwise) or until a non-standard unit, eliminating such interests, has been approved by the Commission.



**CERTIFICATION**

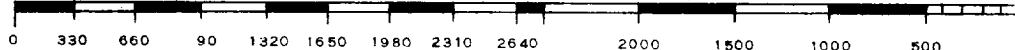
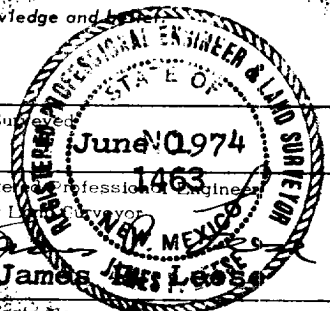
*I hereby certify that the information contained herein is true and complete to the best of my knowledge and belief.*

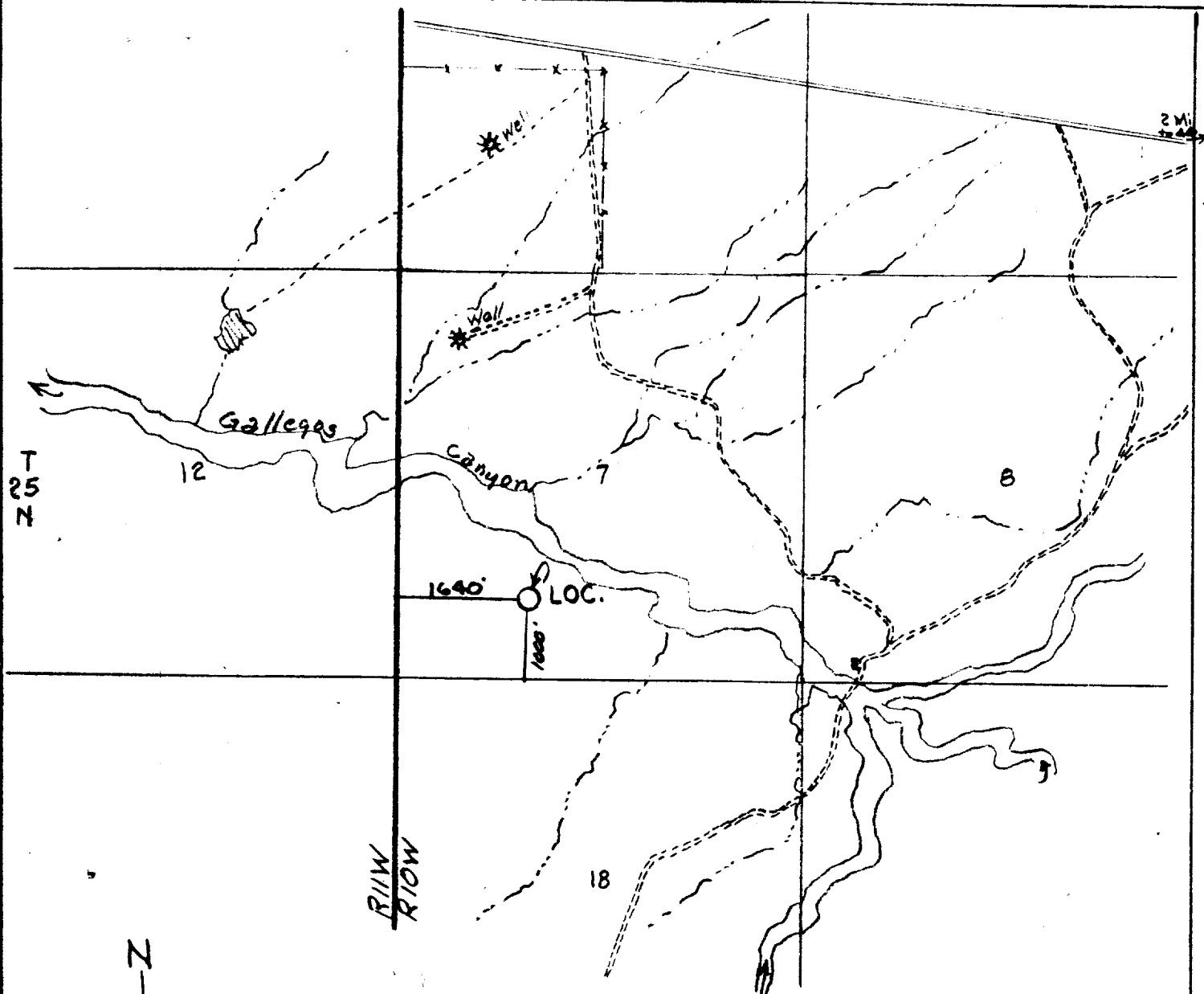
Original signed by **T. A. Dugan**

Name <b>Thomas A. Dugan</b>
Position <b>Engineer</b>
Company <b>Universal Resources</b>
Date <b>6-10-74</b>

*I hereby certify that the well location shown on this plat was plotted from field notes of actual surveys made by me or under my supervision, and that the same is true and correct to the best of my knowledge and belief.*

Date Surveyed <b>June 10, 1974</b>
Registered Professional Engineer and/or Land Surveyor <b>James A. Leese</b>
Certificate No. <b>1463</b>





VICINITY MAP FOR  
 UNIVERSAL RESOURCES  
 showing  
 Well Location in SW/4 of  
 Sec. 7, T25N, R10W, N.M.P.M.,  
 San Juan County, New Mexico  
 Scale: 1" = 2000' Date: 4 June, 1974

San Juan Engineering Company

Farmington, New Mexico