

UNITED STATES
DEPARTMENT OF THE INTERIOR
GEOLOGICAL SURVEY

36-045-21508

5. LEASE DESIGNATION AND SERIAL NO.
N00-C-14-20-5252

APPLICATION FOR PERMIT TO DRILL, DEEPEN, OR PLUG BACK

1a. TYPE OF WORK

DRILL ☒DEEPEN ☐PLUG BACK ☐

b. TYPE OF WELL

OIL
WELL ☐GAS
WELL ☒

OTHER

SINGLE
ZONE ☒MULTIPLE
ZONE ☐

2. NAME OF OPERATOR

Tenneco Oil Company

3. ADDRESS OF OPERATOR

1200 Lincoln Tower Bldg., Denver, Colorado 80203

4. LOCATION OF WELL (Report location clearly and in accordance with any State requirements.*)

At surface

800' FNL and 800' FEL

At proposed prod. zone

14. DISTANCE IN MILES AND DIRECTION FROM NEAREST TOWN OR POST OFFICE*

15. DISTANCE FROM PROPOSED*

LOCATION TO NEAREST
PROPERTY OR LEASE LINE, FT.
(Also to nearest drlg. unit line, if any)

16. NO. OF ACRES IN LEASE

320

17. NO. OF ACRES ASSIGNED
TO THIS WELL

320

18. DISTANCE FROM PROPOSED LOCATION*

TO NEAREST WELL, DRILLING, COMPLETED,
OR APPLIED FOR, ON THIS LEASE, FT.

19. PROPOSED DEPTH

6275'

20. ROTARY OR CABLE TOOLS

Rotary

21. ELEVATIONS (Show whether DF, RT, GR, etc.)

6608' GR

22. APPROX. DATE WORK WILL START*

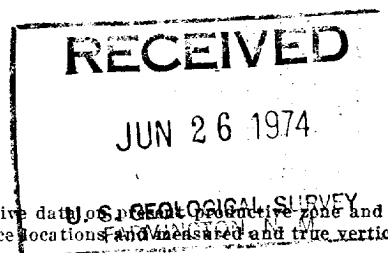
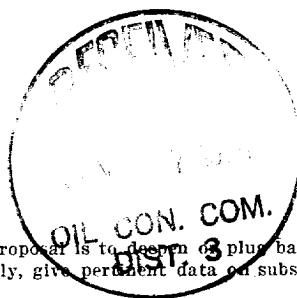
Upon approval

23.

PROPOSED CASING AND CEMENTING PROGRAM

SIZE OF HOLE	SIZE OF CASING	WEIGHT PER FOOT	SETTING DEPTH	QUANTITY OF CEMENT
12-1/4"	8-5/8"	24#	600' ±	Sufficient to circulate
7-7/8"	5-1/2"	15.5#	6275' ±	1st stage: T/C above Gallup
				2nd stage: T/C above Pictured Cliffs

Well to be drilled to approximate TD of 6275', core, test and log as required, and if commercial production is indicated, run 5-1/2" casing to TD and cement in two stages to cover zones as indicated. Perforate casing and treat formation as necessary to establish production. B.O.P. to be tested each 24 hours.



IN ABOVE SPACE DESCRIBE PROPOSED PROGRAM: If proposal is to deepen or plug back, give data on present productive zone and proposed new productive zone. If proposal is to drill or deepen directionally, give pertinent data on subsurface locations and measured and true vertical depths. Give blowout preventer program, if any.

24.

SIGNED

Saul F. Rogers

TITLE

Sr. Production Clerk

DATE

6/25/74

(This space for Federal or State office use)

PERMIT NO.

APPROVAL DATE

APPROVED BY

GA

TITLE

DATE

CONDITIONS OF APPROVAL, IF ANY:

NEW MEXICO OIL CONSERVATION COMMISSION
WELL LOCATION AND ACREAGE DEDICATION PLAT

Form O-102
Supersedes C-128
Effective 1-1-65

All distances must be from the outer boundaries of the Section.

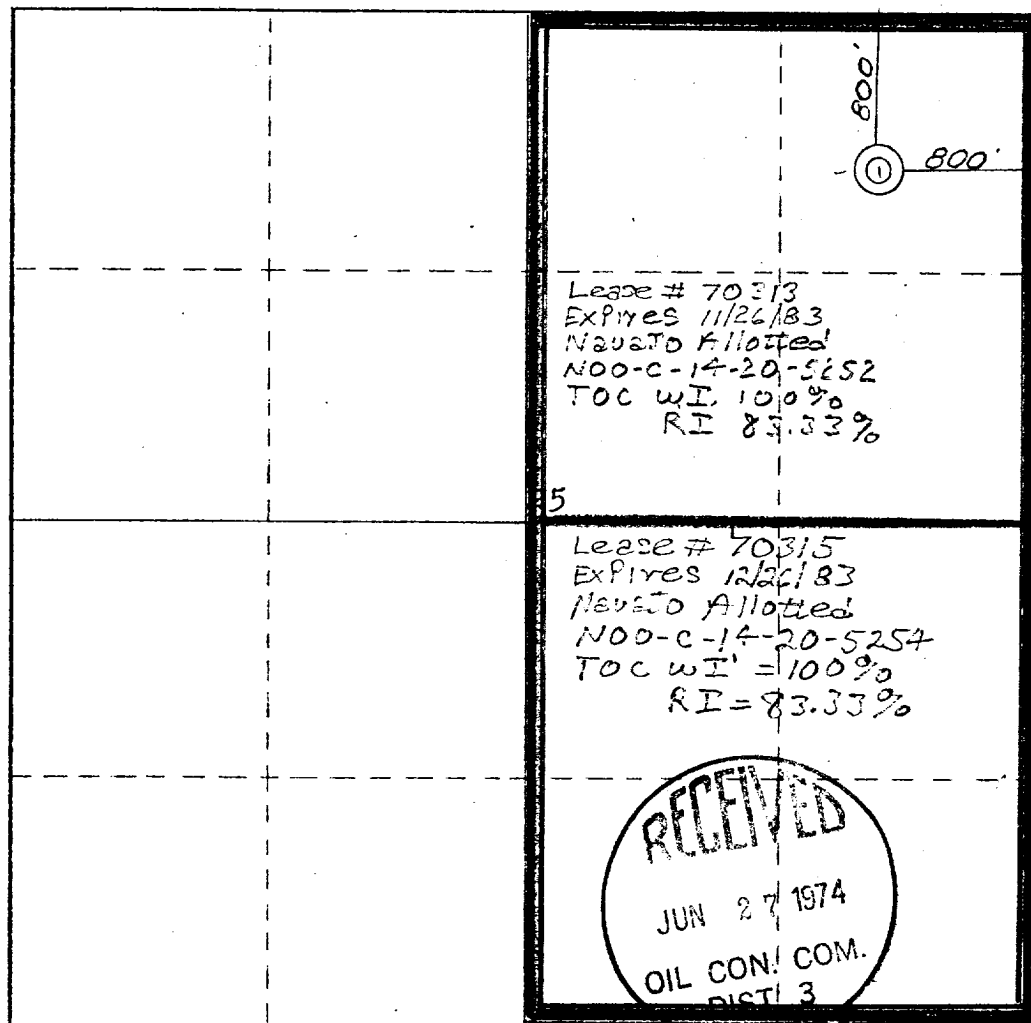
Operator TENNECO OIL COMPANY			Lease CANYON		Well No. 17
Unit Letter A	Section 25	Township 25 NORTH	Range 11 WEST	County SAN JUAN	
Actual Footage Location of Well: <div style="display: flex; justify-content: space-between;"> 800 feet from the NORTH line and 800 feet from the EAST line </div>					
Ground Level Elev. 6608	Producing Formation Dakota	Pool Basin Dakota	Dedicated Acreage: 320 Acres		

- Outline the acreage dedicated to the subject well by colored pencil or hachure marks on the plat below.
- If more than one lease is dedicated to the well, outline each and identify the ownership thereof (both as to working interest and royalty).
- If more than one lease of different ownership is dedicated to the well, have the interests of all owners been consolidated by communitization, unitization, force-pooling, etc?

☒ Yes ☐ No If answer is "yes," type of consolidation Communitization

If answer is "no," list the owners and tract descriptions which have actually been consolidated. (Use reverse side of this form if necessary.)

No allowable will be assigned to the well until all interests have been consolidated (by communitization, unitization, forced-pooling, or otherwise) or until a non-standard unit, eliminating such interests, has been approved by the Commission.



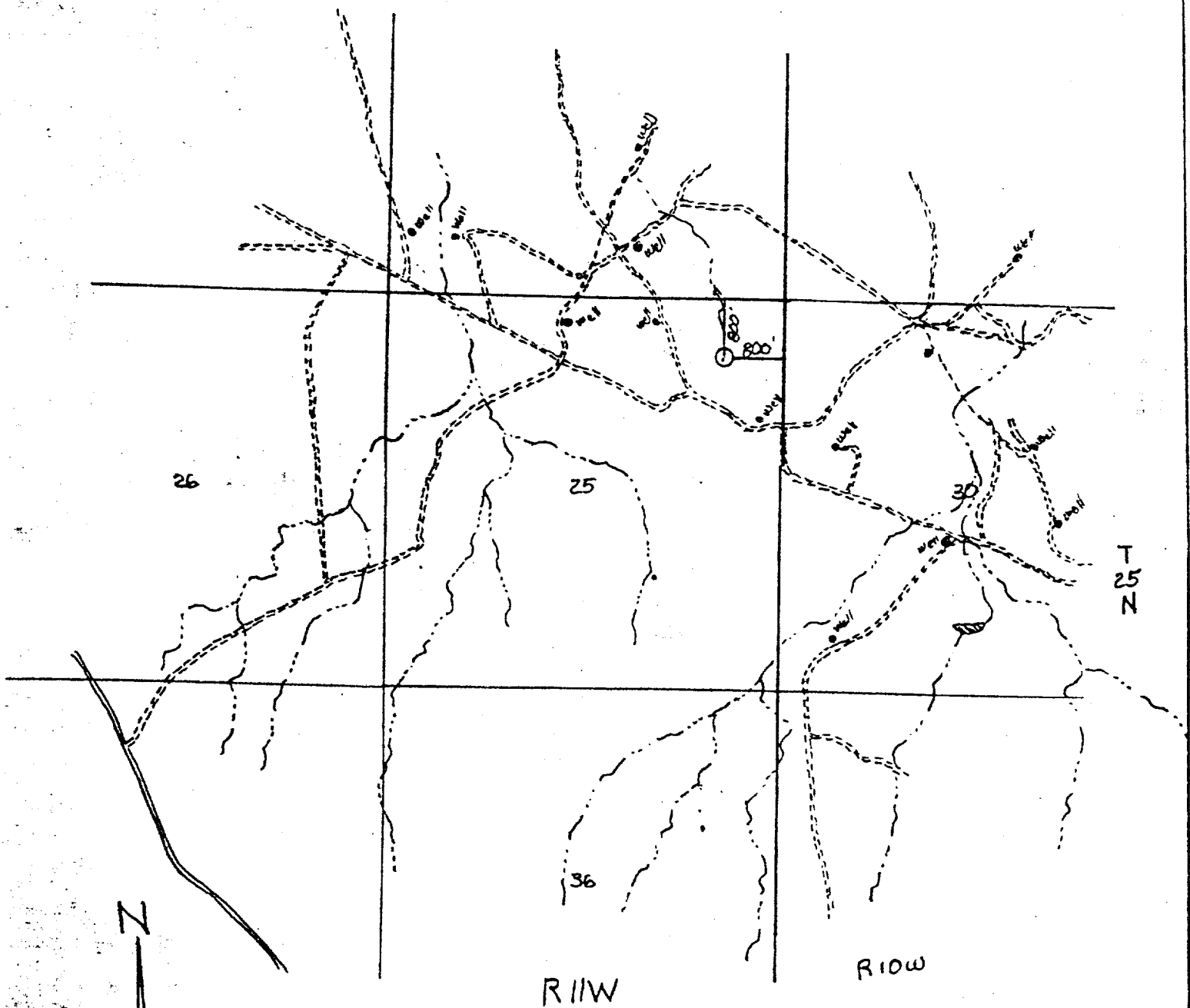
CERTIFICATION

I hereby certify that the information contained herein is true and complete to the best of my knowledge and belief.

Name
Paul L. Rogers
Position
Sr. Production Clerk
Company
Tenneco Oil Company
Date
June 25, 1974

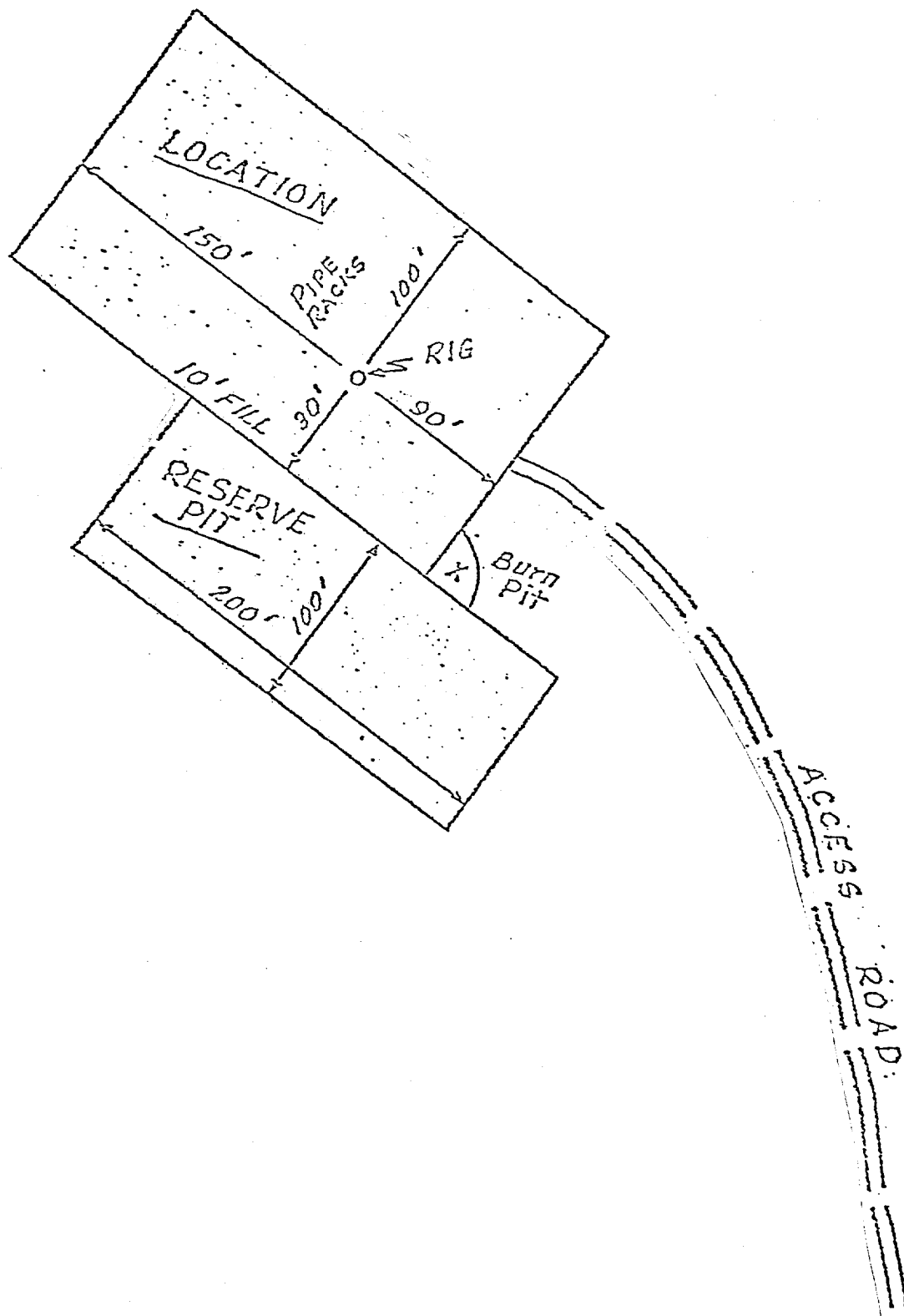
I hereby certify that the well location shown on this plat was plotted from field notes of actual surveys made by me or under my supervision, and that the same is true and correct to the best of my knowledge and belief.

Date Surveyed
18 June 1974
Registered Professional Engineer and Surveyor
James P. Reese
Certificate No.
1463



VICINITY MAP FOR
TENNECO OIL CO.

showing
Well Location in NE 1/4 of
Sec. 25, T25N, R11W, N.M.P.M.,
San Juan County, New Mexico
scale: 1" = 2000' Date: 19 June, 1974

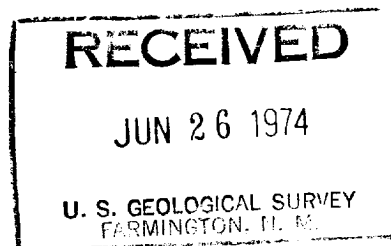


Tenneco Oil
A Tenneco Company

Suite 1200
Lincoln Tower Building
Denver, Colorado 80203
(303) 292-9920



June 25, 1974



U. S. Geological Survey
P. O. Box 959
Farmington, New Mexico 87401

RE: Application for Permit to Drill
Canyon No. 17
NE NE/4 Sec. 25, T25N, R11W
San Juan County, New Mexico

Gentlemen:

Attached are eight copies each of the Notice of Intention to Drill, Well Location and Acreage Dedication Plat, and Vicinity Map showing existing roads, pipelines, flowlines, proposed roads, etc., related to the captioned well.

The water we use for drilling will come from the Shell Bisti Operations. Waste disposal will be buried in the burn pit or reserve pit. There will be no camp or airstrip associated with the drilling of this well. Upon completion or abandonment of this well, the location will be cleaned and leveled, and a dry hole marker placed, if applicable.

Yours very truly,

TENNECO OIL COMPANY

A handwritten signature in cursive script that reads "D. D. Myers".

D. D. Myers
Division Production Manager

PLR:hk

Attachs.