

Minimum equipment requirements are:

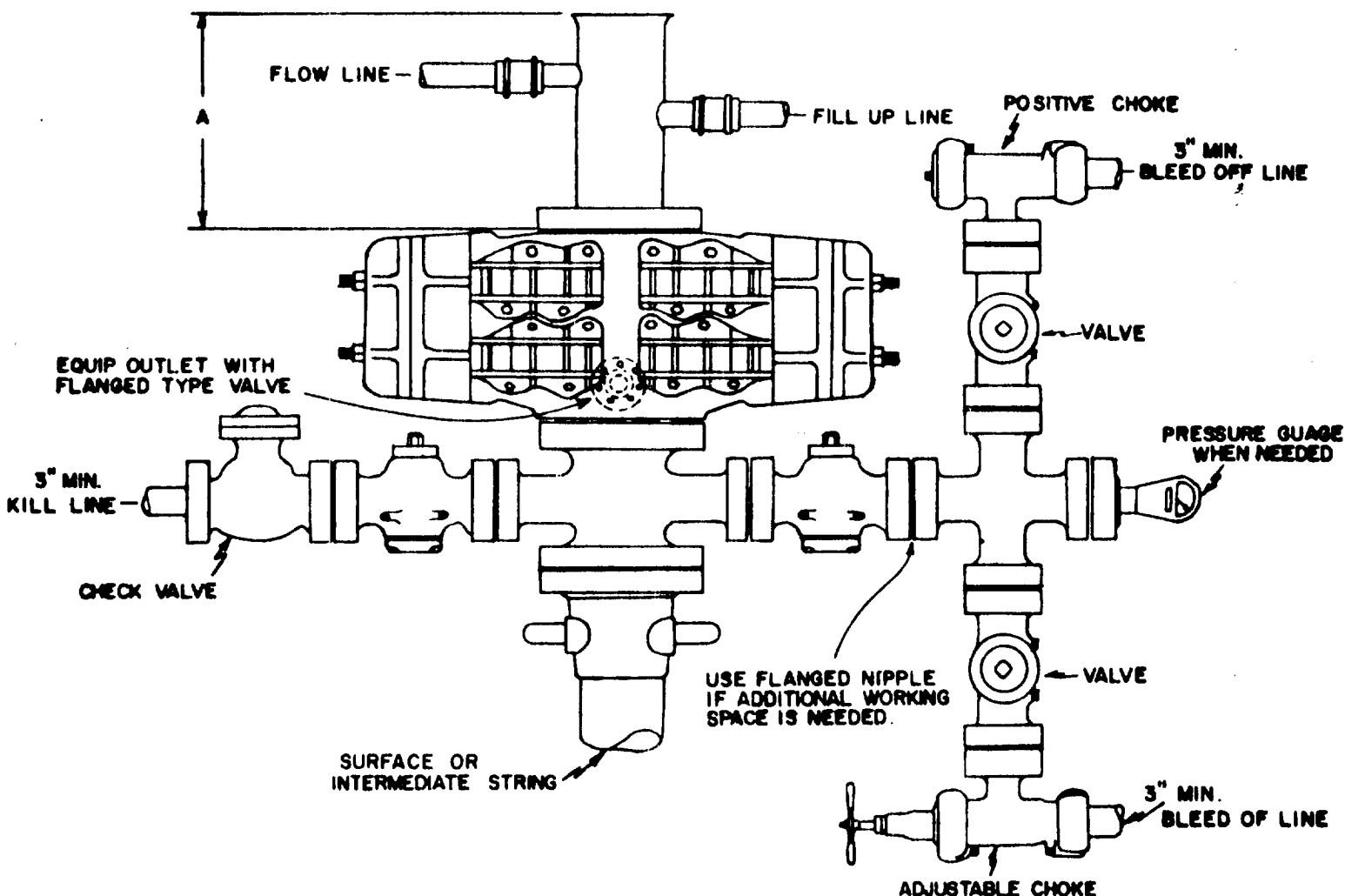
1. Blowout preventers must be capable of being operated both mechanically and hydraulically. Controls must be located so that the blowout preventer can be operated outside the drilling rig substructure. All steel tubing and connections must be used between the hydraulic controls and the blowout preventer.

2. Pressure rating of the blowout preventer and associated connections must be proportional to depth and pressure expectations. Use Figure 1 as a guide in unknown areas.

3. Distance "A" must be sufficient to accommodate a Hydril preventer if required.

4. Chokes, valves, manifold piping and kill line must be flanged and designed equal to or above the pressure rating of the blowout preventer.

5. Kelly cock must be used at all times and should be checked daily.



NOTE: BLOWOUT PREVENTER MUST HAVE DOUBLE RAMS; ONE BLIND & ONE PIPE RAM OR THE EQUIPMENT MUST CONSIST OF TWO BLOWOUT PREVENTERS, ONE EQUIPPED WITH BLIND RAMS & THE OTHER WITH PIPE RAMS. ALWAYS PLACE THE BLIND RAMS IN THE TOP PREVENTER.

NAVAJO TRIBE "BT" WELL NO. 1

NE $\frac{1}{4}$ NE $\frac{1}{4}$ SEC. 16 T25N-R18W

SAN JUAN COUNTY, NEW MEXICO

APPROVED
[Signature]
[Signature]

TEXACO INC DENVER, COLORADO	
BLOWOUT PREVENTER ASSEMBLY STANDARD NO. 2	
DRAWN BY <u>M.B.D.</u>	CHECKED BY <u>J.B.L.</u>
DATE <u>11-8-88</u>	FILE <u>448000</u>
REVISED <u> </u>	SERIAL <u>X-148-8</u>