



PETROLEUM PRODUCTS

PRODUCING DEPARTMENT
ROCKY MOUNTAINS-U. S.
DENVER DIVISION

March 17, 1975

TEXACO INC.
P. O. BOX 2100
DENVER, COLORADO 80201

NAVAJO ALLOTTEES "T" WELL NO. 2
NE $\frac{1}{4}$ SW $\frac{1}{4}$ SEC. 14 T25N-R11W
SAN JUAN COUNTY, NEW MEXICO
6.34

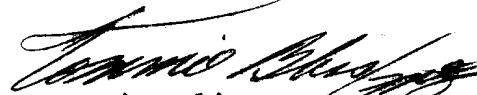
Mr. P. T. McGrath (3)
District Engineer
U. S. Geological Survey
P. O. Box 959
Farmington, New Mexico 87401

Dear Mr. McGrath:

As requested by your office, the following information is provided for the drilling of Navajo Allottees "T" Well No. 2, San Juan County, New Mexico:

1. SURFACE CASING: 650' of 8-5/8" OD 24# K-55 ST&C New.
2. CASINGHEADS: 10-3/4" x 10" Series 900, 2000# pressure rating.
3. PRODUCTION CASING: 6040' of 4-1/2" OD 10.5# K-55 ST&C New.
4. BLOWOUT PREVENTER: 10" Series 900 with blind and pipe rams. See attached drawing.
5. AUXILIARY EQUIPMENT:
 - (a) Kelly cock will be used at all times and checked daily.
 - (b) Safety sub with full opening valve for drill pipe on floor.
 - (c) Manifold as shown on attached drawing.
6. ANTICIPATED BOTTOM HOLE PRESSURE: 2000 psi.
7. DRILLING FLUID: Water and water-base mud.

Very truly yours,


Tommie Bliss
District Superintendent

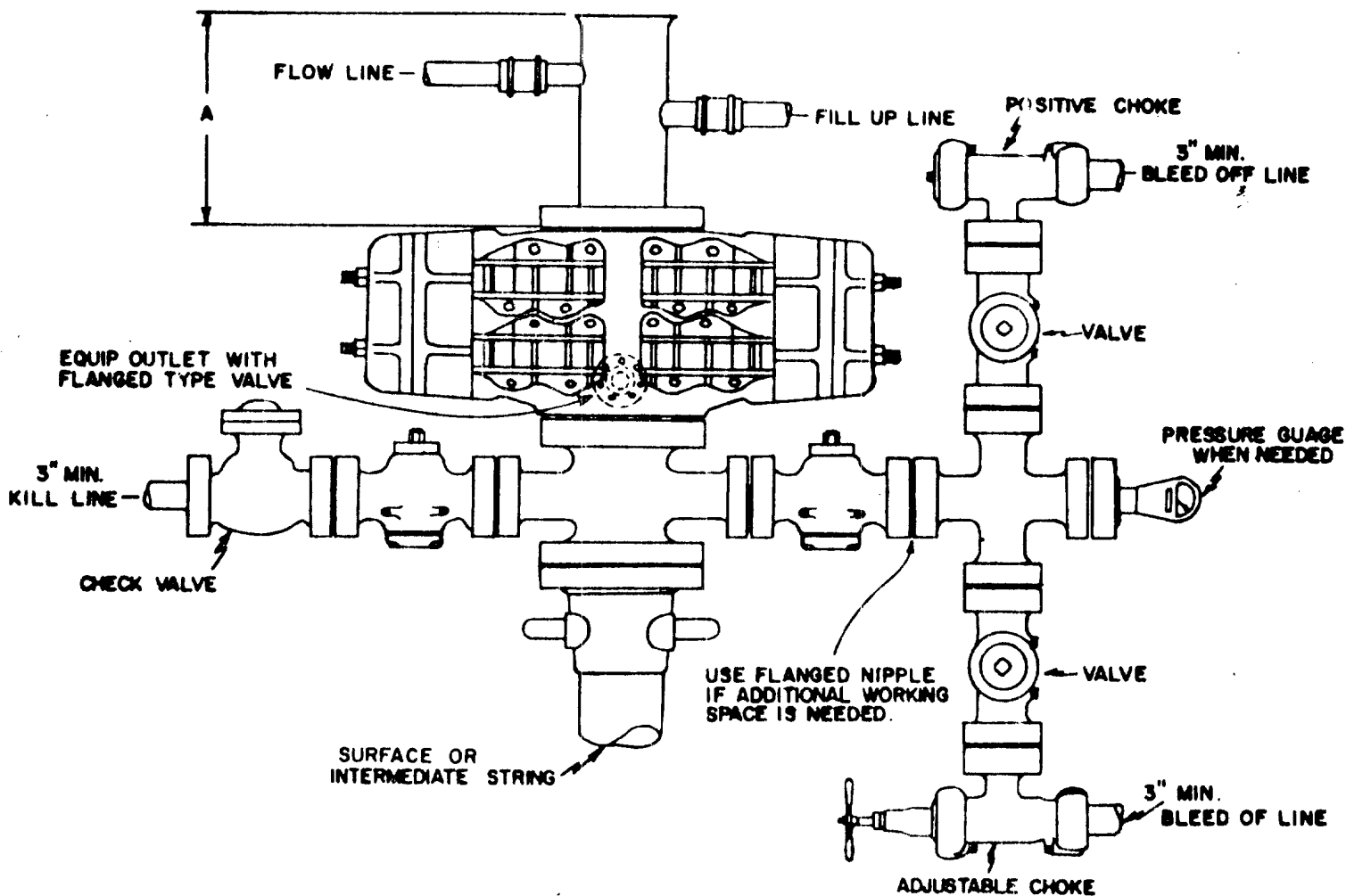
DRD:RB

Attach.

[Faint, illegible handwritten text]

Minimum equipment requirements are:

1. Blowout preventers must be capable of being operated both mechanically and hydraulically. Controls must be located so that the blowout preventer can be operated outside the drilling rig substructure. All steel tubing and connections must be used between the hydraulic controls and the blowout preventer.
2. Pressure rating of the blowout preventer and associated connections must be proportional to depth and pressure expectations. Use Figure 1 as a guide in unknown areas.
3. Distance "A" must be sufficient to accommodate a Hydril preventer if required.
4. Chokes, valves, manifold piping and kill line must be flanged and designed equal to or above the pressure rating of the blowout preventer.
5. Kelly cock must be used at all times and should be checked daily.



NOTE: BLOWOUT PREVENTER MUST HAVE DOUBLE RAMS; ONE BLIND & ONE PIPE RAM OR THE EQUIPMENT MUST CONSIST OF TWO BLOWOUT PREVENTERS, ONE EQUIPPED WITH BLIND RAMS & THE OTHER WITH PIPE RAMS. ALWAYS PLACE THE BLIND RAMS IN THE TOP PREVENTER.

NAVAJO ALLOTTEES "T"

WELL NO. 2

SAN JUAN COUNTY, NEW MEXICO

APPROVED
[Signature]
[Signature]

TEXACO INC	
DENVER, COLORADO	
BLOWOUT PREVENTER ASSEMBLY	
STANDARD NO. 2	
DRAWN BY <u>MBD</u>	CHECKED BY <u>EBZ</u>
DATE <u>11-8-81</u>	FILE <u>448000</u>
REVISED <u> </u>	SERIAL <u>1-142-2</u>