

UNITED STATES  
DEPARTMENT OF THE INTERIOR  
GEOLOGICAL SURVEY

API 30-045-2206

## APPLICATION FOR PERMIT TO DRILL, DEEPEN, OR PLUG BACK

## 1a. TYPE OF WORK

DRILL ☒DEEPEN ☐PLUG BACK ☐

## b. TYPE OF WELL

OIL  
WELL ☐CAS  
WELL ☒

OTHER

SINGLE  
ZONE ☐MULTIPLE  
ZONE ☐

## 2. NAME OF OPERATOR

Tenneco Oil Company

## 3. ADDRESS OF OPERATOR

1860 Lincoln St., Suite 1200, Denver, Colorado 80202

## 4. LOCATION OF WELL (Report location clearly and in accordance with any State requirements)

At surface

990' FNL and 790' FWL

At proposed prod. zone

## 14. DISTANCE IN MILES AND DIRECTION FROM NEAREST TOWN OR POST OFFICE\*

## 15. DISTANCE FROM PROPOSED\*

LOCATION TO NEAREST  
PROPERTY OR LEASE LINE, FT.  
(Also to nearest drlg. unit line, if any)

## 18. DISTANCE FROM PROPOSED LOCATION\*

TO NEAREST WELL, DRILLING, COMPLETED,  
OR APPLIED FOR, ON THIS LEASE, FT.

## 16. NO. OF ACRES IN LEASE

319.28

## 19. PROPOSED DEPTH

+6250'

17. NO. OF ACRES ASSIGNED  
TO THIS WELL

N/319.28

## 20. ROTARY OR CABLE TOOLS

Rotary

## 21. ELEVATIONS (Show whether DF, RT, GR, etc.)

6583'

## 22. APPROX. DATE WORK WILL START\*

Upon Approval

## 23.

## PROPOSED CASING AND CEMENTING PROGRAM

SIZE OF HOLE	SIZE OF CASING	WEIGHT PER FOOT	SETTING DEPTH	QUANTITY OF CEMENT
12 1/4"	8 5/8"	24#/ft.	+ 300'	Suff. to circulate to surface
7 7/8"	4 1/2"	10.5#/ft.	+6250'	Cement in two stages.

Plan to drill well as follows:

1. Drill 12 1/4" hole to + 300'.
2. Set and cement 8 5/8" casing to + 300' & cement w/sufficient cement to circulate back to surface.
3. Install BOP and test both sets of rams to 1000 psi. for 15 min.
4. Drill 7 7/8" hole to T.D.
5. Set 4 1/2" csg. to T.D. Cement in two stages.
  - a. Cement across Gallup with enough to come out above Gallup.
  - b. Sufficient to cement back to surface casing.
6. This well to be completed through casing perforations and stimulated as necessary to establish commercial production.
7. Clean up area.

*Not dedicated*

IN ABOVE SPACE DESCRIBE PROPOSED PROGRAM: If proposal is to deepen or plug back, give data on present productive zone and proposed new productive zone. If proposal is to drill or deepen directionally, give pertinent data on subsurface locations and measured and true vertical depths. Give flowout presenter program, if any.

## 24.

SIGNED

*D. D. Myers*

TITLE

Div. Production Manager

DATE

4-27-76

(This space for Federal or State office use)

PERMIT NO.

APPROVAL DATE

APPROVED BY

TITLE

CONDITIONS OF APPROVAL, IF ANY:

*Ok*

\*See Instructions On Reverse Side

RECEIVED

APR 30 1976

U. S. GEOLOGICAL SURVEY  
WASHINGTON, D. C.

**NEW MEXICO OIL CONSERVATION COMMISSION  
WELL LOCATION AND ACERAGE DEDICATION PLAT**

*All distances must be from the outer boundaries of the Section*

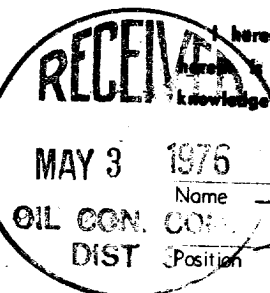
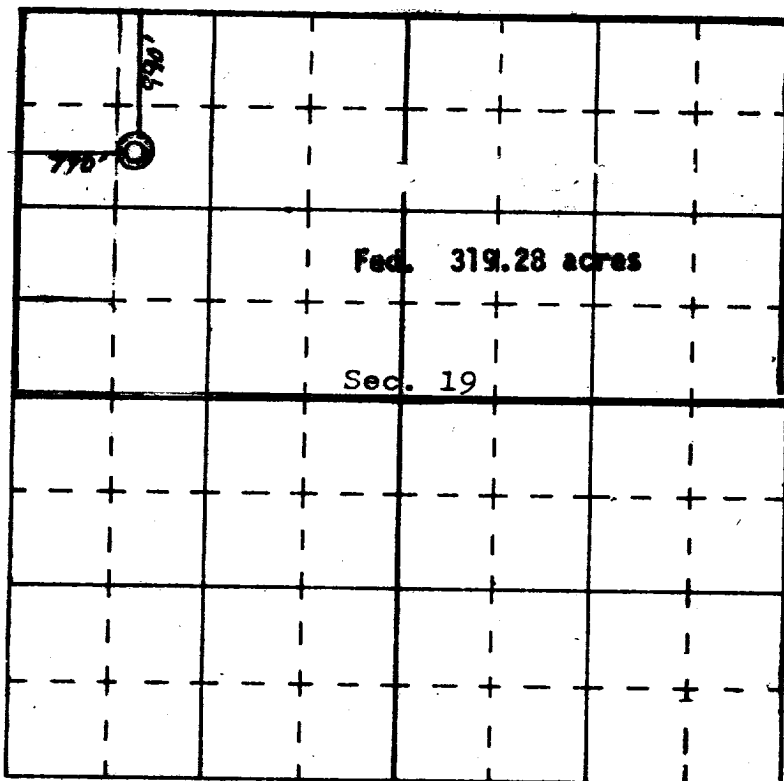
Operator <b>TENNECO OIL COMPANY</b>			Lease <b>MOUNTVIEW</b>		Well No. <b>2</b>
Unit Letter <b>D</b>	Section <b>19</b>	Township <b>25 NORTH</b>	Range <b>10 WEST</b>	County <b>SAN JUAN</b>	
Actual Footage Location of Well: <b>990</b> feet from the <b>NORTH</b> line and <b>790</b> feet from the <b>WEST</b> line Ground Level Elev. <b>6583</b> Producing Formation <b>Basin Dakota</b> Pool <b>Basin Dakota</b> Dedicated Average: <b>319.28</b> <b>N/2</b> Acres					

1. Outline the acreage dedicated to the subject well by colored pencil or hachure marks on the plat below.
2. If more than one lease is dedicated to the well, outline each and identify the ownership thereof (both as to working interest and royalty).
3. If more than one lease of different ownership is dedicated to the well, have the interests of all owners been consolidated by communitization, unitization, force-pooling, etc?  
 ( ) Yes ( ) No      If answer is "yes," type of consolidation \_\_\_\_\_

If answer is "no," list the owners and tract descriptions which have actually consolidated. (Use reverse side of this form if necessary.) \_\_\_\_\_

No allowable will be assigned to the well until all interests have been consolidated (by communitization, unitization, forced-pooling, or otherwise) or until a non standard unit, eliminating such interests, has been approved by the Commission.

**Federal #NM 23063**



**CERTIFICATION**

I hereby certify that the information contained herein is true and complete to the best of my knowledge and belief.

Signature: *[Signature]*  
**Production Clerk**

Company: **Tenneco Oil Company**

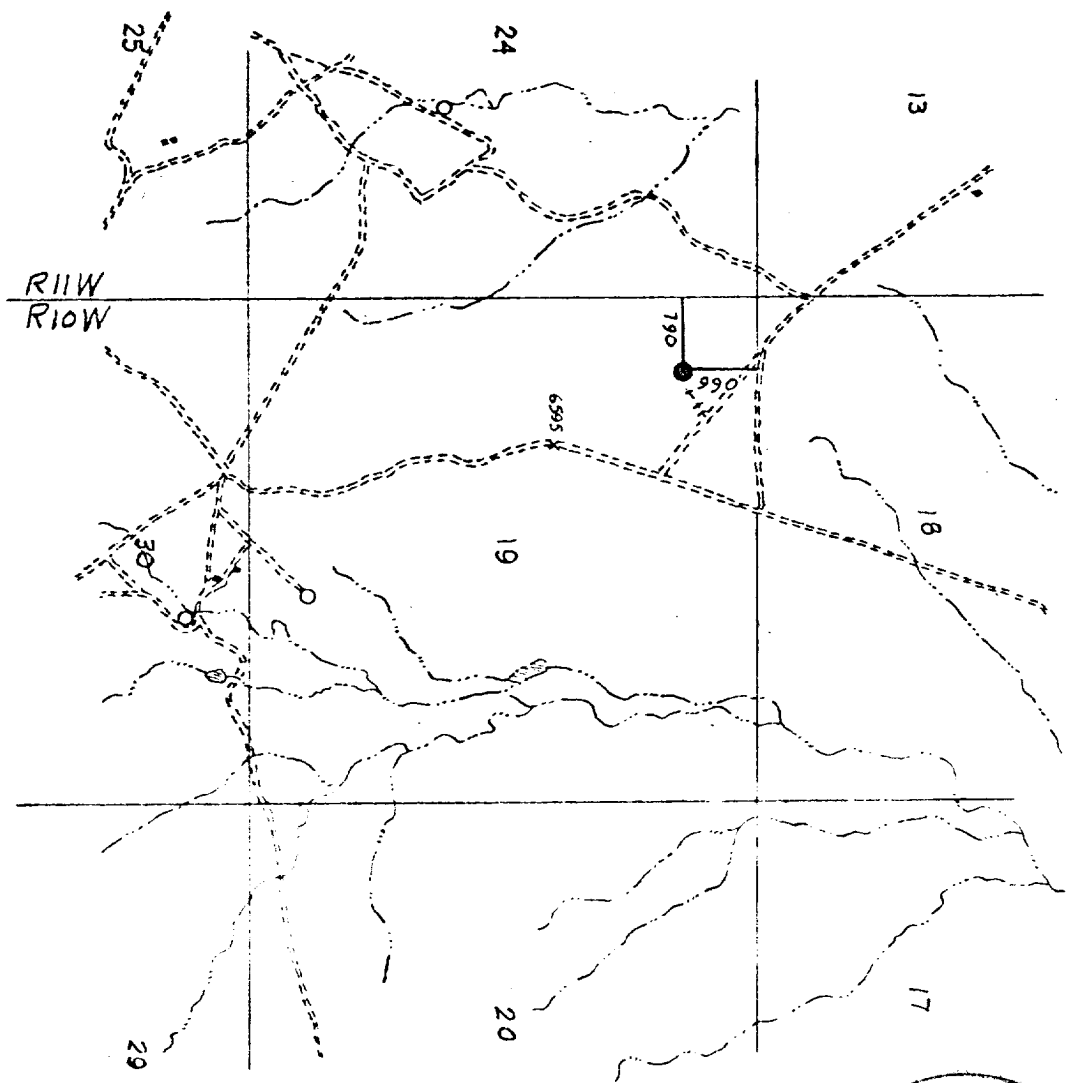
Date: **4/27/76**

I hereby certify that the well location shown on this plat was plotted from field notes of actual surveys made by me or under my supervision, and that the same is true and correct to the best of my knowledge and belief.

Date Surveyed: **12 March, 1976**  
 Signature: *[Signature]*  
**Registered Professional Engineer and/or Land Surveyor**

**James P. Leese**

**1463**  
 Certificate No.



1"=2000'

+++ Proposed Road

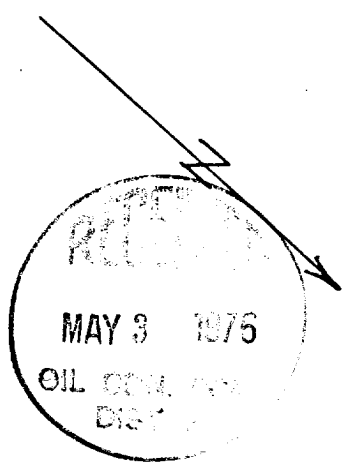
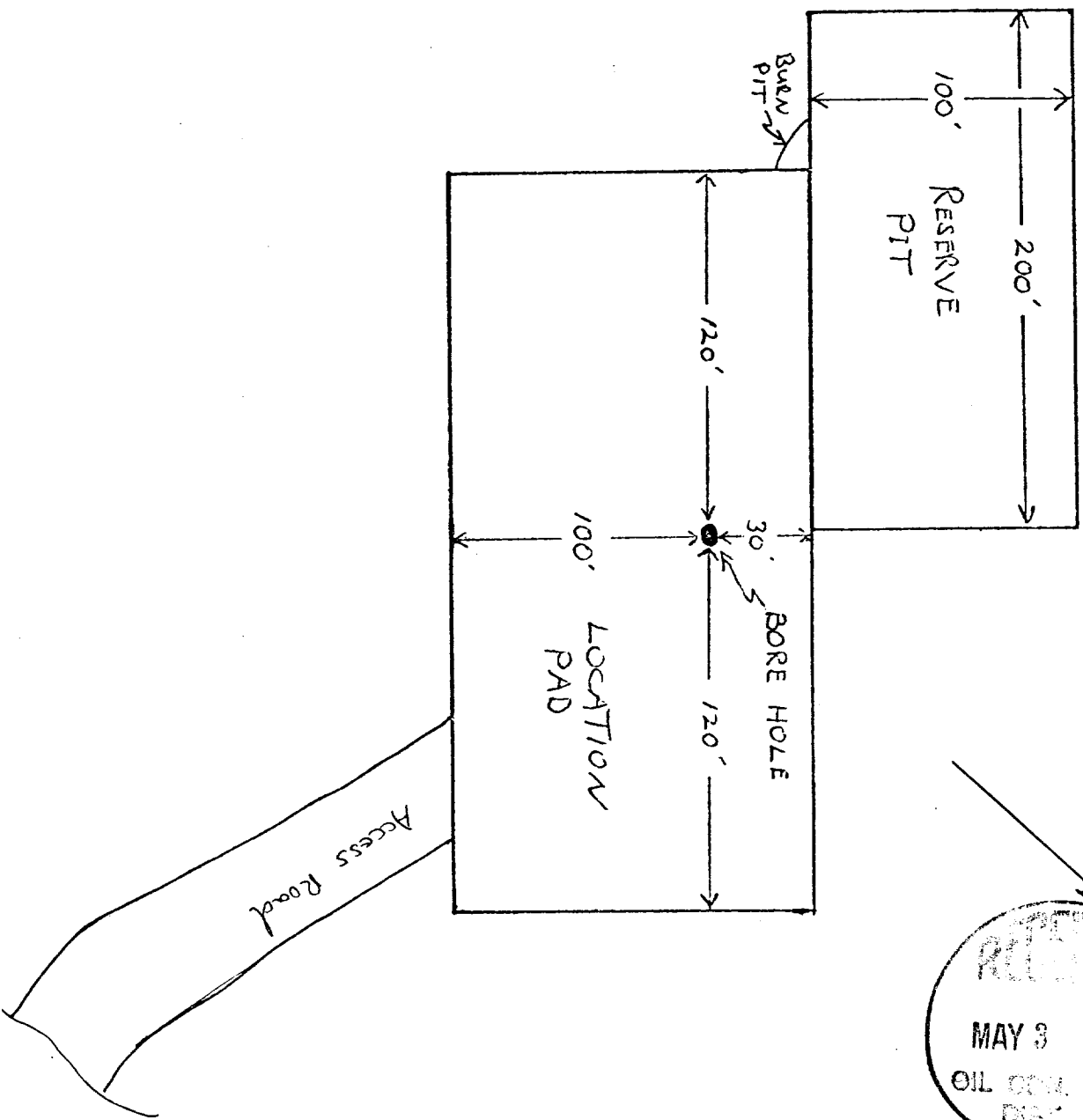
MON T VIEW # 2

Vicinity Map for  
 Tenneco Oil Company  
 Well location in the NW/4  
 of Section 19, T25N, R10W,  
 NMPM, San Juan County,  
 New Mexico.  
 Scale: 1"=2000'  
 Date: 15 March 1976

San Juan Engineering Co.  
 Farmington, New Mexico

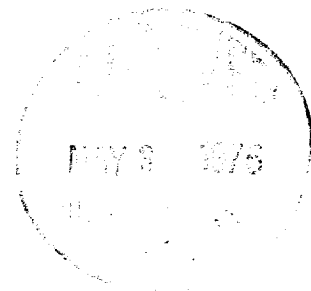
# RIG LAYOUT

MONT VIEW #2



Mountview #2  
SURFACE USE PLAN

1. Shown on attached map.
2. Shown on attached map. Approximately 400' of 14' wide road will be required.
3. Shown on attached map.
4. Shown on attached map.
5. This is expected to be a dry gas well, therefore, a tank battery will not be required.
6. Water will be hauled from a private well.
7. All waste material will be buried in reserve pit at time of location clean up.
8. No camps will be associated with this operation.
9. No airstrip will be built for this operation.
10. Shown on attached diagram.
11. Upon completion or abandonment of this well, the location will be cleaned and levelled, and a dry hole marker placed, if applicable.
12. The location is sandy, rocky, typical for the area. Vegetation is sage brush.

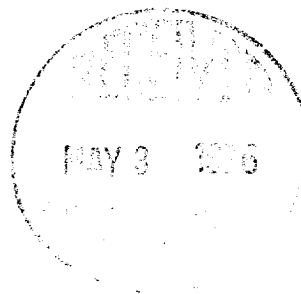


Mountview #2

7 - POINT WELL CONTROL PLAN

1. Surface casing: 8 5/8", 24#, K-55, approximately 300' , new condition.
2. Casing head will be 10", 900 series, 3000 psi rating.
3. No intermediate casing will be run.
4. Blowout preventors: Hydraulic, double ram, 10", one set of rams will be provided for each size drill pipe in the hole. One set of blind rams at all times. Fill line will be 2". Kill line will be 2" and choke relief line will be 2" with variable choke.
5. Auxiliary equipment:
  - (1) Kelly cock will be in use at all times.
  - (2) Stabbing valve to fit drill pipe will be present on floor at all times.
  - (3) Mud monitoring will be visual, no abnormal pressures are anticipated in this area.
6. This is an area of known pressure. Maximum anticipated pressure at 6250' T.D. is 2500 psi.
7. Drilling Fluids:

0 - 5500' <u>±</u>	Gel water with solids control to maintain good conditions.
5500' <u>±</u> - T.D.	Gel water with 50 sec. viscosity or greater, and 9 cc or less water loss.



AMENDED

UNITED STATES  
DEPARTMENT OF THE INTERIOR  
GEOLOGICAL SURVEY

(Other instructions on reverse side)

Approved  
Budget Bureau No. 42-R1425.

## APPLICATION FOR PERMIT TO DRILL, DEEPEN, OR PLUG BACK

1a. TYPE OF WORK <b>DRILL</b> <input checked="" type="checkbox"/> <b>DEEPEN</b> <input type="checkbox"/> <b>PLUG BACK</b> <input type="checkbox"/>		5. LEASE DESIGNATION AND SERIAL NO. NM 23063	
b. TYPE OF WELL OIL WELL <input type="checkbox"/> GAS WELL <input checked="" type="checkbox"/> OTHER <input type="checkbox"/>		6. IF INDIAN, ALLOTTEE OR TRIBE NAME	
2. NAME OF OPERATOR Tenneco Oil Company		7. UNIT AGREEMENT NAME	
3. ADDRESS OF OPERATOR 1860 Lincoln St., Suite 1200, Denver, Colorado 80203		8. FARM OR LEASE NAME Mountview	
4. LOCATION OF WELL (Report location clearly and in accordance with any State requirements.)* At surface 990' FNL and 790' FWL At proposed prod. zone		9. WELL NO. 2	
14. DISTANCE IN MILES AND DIRECTION FROM NEAREST TOWN OR POST OFFICE*		10. FIELD AND POOL, OR WILDCAT Basin Dakota	
15. DISTANCE FROM PROPOSED* LOCATION TO NEAREST PROPERTY OR LEASE LINE, FT. (Also to nearest drig. unit line, if any)		11. SEC., T., R., M., OR BLK. AND SURVEY OR AREA Sec. 19, T25N, R10W	
16. NO. OF ACRES IN LEASE 319.28		12. COUNTY OR PARISH San Juan	
17. NO. OF ACRES ASSIGNED TO THIS WELL N/319.28		13. STATE New Mexico	
18. DISTANCE FROM PROPOSED LOCATION* TO NEAREST WELL, DRILLING, COMPLETED, OR APPLIED FOR, ON THIS LEASE, FT.		19. PROPOSED DEPTH + 6250'	
20. ROTARY OR CABLE TOOLS Rotary		21. APPROX. DATE WORK WILL START* Upon Approval	
21. ELEVATIONS (Show whether DF, RT, GR, etc.) 6583'		22. APPROX. DATE WORK WILL START* Upon Approval	
23. PROPOSED CASING AND CEMENTING PROGRAM			
SIZE OF HOLE	SIZE OF CASING	WEIGHT PER FOOT	SETTING DEPTH
12-1/4"	8-5/8"	24#/ft.	+ 300'
7-7/8"	5-1/2"	15.5/ft.	+ 6250'
			QUANTITY OF CEMENT
			Suff. to circulate to surface
			Cement in two stages.

Plan to drill well as follows:

1. Drill 12 1/4" hole to  $\pm 300'$ .
2. Set and cement 8-5/8" casing to  $\pm 300'$  & cement w/sufficient cement to circulate back to surface.
3. Install BOP and test both sets of rams to 1000 psi. for 15 min.
4. Drill 7-7/8" hole to T. D.
5. Set 5 1/2" csg. to T. D. Cement in two stages.
  - a. Cement across Gallup with enough to come out above Gallup.
  - b. Sufficient to cement back to surface casing.
6. This well to be completed through casing perforations and stimulated as necessary to establish commercial production.
7. Clean up area.

IN ABOVE SPACE DESCRIBE PROPOSED PROGRAM: If proposal is to deepen or plug back, give data on present productive zone and proposed new productive zone. If proposal is to drill or deepen directionally, give pertinent data on subsurface locations and measured and true vertical depths. Give blowout preventer program, if any.

SIGNED D. L. Meyer TITLE Div. Production Manager DATE 8-30-76

(This space for Federal or State office use)

PERMIT NO. \_\_\_\_\_ APPROVAL DATE \_\_\_\_\_

APPROVED BY \_\_\_\_\_ TITLE \_\_\_\_\_

CONDITIONS OF APPROVAL, IF ANY:



SEP 2 1976

\*See Instructions On Reverse Side