

UNITED STATES
DEPARTMENT OF THE INTERIOR
GEOLOGICAL SURVEY

APPLICATION FOR PERMIT TO DRILL, DEEPEN, OR PLUG BACK

1a. TYPE OF WORK

DRILL ☒DEEPEN ☐PLUG BACK ☐

b. TYPE OF WELL

OIL
WELL ☐GAS
WELL ☒

OTHER

SINGLE
ZONE ☐MULTIPLE
ZONE ☐

2. NAME OF OPERATOR

Tenneco Oil Company

3. ADDRESS OF OPERATOR

1860 Lincoln St., Suite 1200, Denver, Colorado 80203

4. LOCATION OF WELL (Report location clearly and in accordance with any State requirements.)*

At surface

1850' FSL and 790' FEL

At proposed prod. zone

14. DISTANCE IN MILES AND DIRECTION FROM NEAREST TOWN OR POST OFFICE*

15. DISTANCE FROM PROPOSED*

LOCATION TO NEAREST
PROPERTY OR LEASE LINE, FT.
(Also to nearest drlg. unit line, if any)18. DISTANCE FROM PROPOSED LOCATION*
TO NEAREST WELL, DRILLING COMPLETED,
OR APPLIED FOR, ON THIS LEASE, FT.

21. ELEVATIONS (Show whether DF, RT, GR, etc.)

6532' GL

16. NO. OF ACRES IN LEASE

320.00

17. NO. OF ACRES ASSIGNED
TO THIS WELL

S/320.00

19. PROPOSED DEPTH

+ 6125'

20. ROTARY OR CABLE TOOLS

Rotary

22. APPROX. DATE WORK WILL START*

Upon Approval

23.

PROPOSED CASING AND CEMENTING PROGRAM

SIZE OF HOLE	SIZE OF CASING	WEIGHT PER FOOT	SETTING DEPTH	QUANTITY OF CEMENT
12 1/4"	8 5/8"	24#/ft.	+300'	Suff. to circulate to surface
7 7/8"	4 1/2"	10.5#/ft.	+6125'	Cement in two stages.

Plan to drill well as follows:

1. Drill 12 1/4" hole to + 300'.
2. Set and cement 8 5/8" casing to + 300' & cement w/sufficient cement to circulate back to surface.
3. Install BOP and test both sets of rams to 1000 psi. for 15 min.
4. Drill 7 7/8" hole to T.D.
5. Set 4 1/2" csg. to T.D. Cement in two stages.
 - a. Cement across Gallup with enough to come out above Gallup.
 - b. Sufficient to cement back to surface casing.
6. This well to be completed through casing perforations and stimulated as necessary to establish commercial production.
7. Clean up area.

IN ABOVE SPACE DESCRIBE PROPOSED PROGRAM: If proposal is to deepen or plug back, give data on present productive zone and proposed new productive zone. If proposal is to drill or deepen directionally, give pertinent data on surface locations and measured and true vertical depths. Give blowout prevention program, if any.

24.

SIGNED

D.D. Myers

TITLE

Div. Production Manager

DATE

4-27-76

(This space for Federal or State office use)

PERMIT NO.

APPROVAL DATE

APPROVED BY

TITLE

CONDITIONS OF APPROVAL, IF ANY:

Okel

RECEIVED

APR 30 1976

U. S. GEOLOGICAL SURVEY
FARMINGTON, N. M.

*See Instructions On Reverse Side

**NEW MEXICO OIL CONSERVATION COMMISSION
WELL LOCATION AND ACERAGE DEDICATION PLAT**

All distances must be from the outer boundaries of the Section

Operator TENNECO OIL COMPANY			Lease CANYON		Well No. 22
Unit Letter I	Section 23	Township 25 NORTH	Range 14 WEST	County SAN JUAN	
Actual Footage Location of Well:					
1850	feet from the SOUTH	line and	790	feet from the EAST	line
Ground Level Elev. 6532	Producing Formation Basin Dakota	Pool Basin Dakota	Dedicated Acreage: 320.00		5/2 Acres

1. Outline the acreage dedicated to the subject well by colored pencil or hatchure marks on the plat below.
2. If more than one lease is dedicated to the well, outline each and identify the ownership thereof (both as to working interest and royalty).
3. If more than one lease of different ownership is dedicated to the well, have the interests of all owners been consolidated by communitization, unitization, force-pooling, etc?

(☒) Yes () No If answer is "yes," type of consolidation Communitization in progress

If answer is "no," list the owners and tract descriptions which have actually consolidated. (Use reverse side of this form if necessary.)

No allowable will be assigned to the well until all interests have been consolidated (by communitization, unitization, forced-pooling, or otherwise) or until a non standard unit, eliminating such interests, has been approved by the Commission.

CERTIFICATION

I hereby certify that the information contained herein is true and complete to the best of my knowledge and belief.

MAY 3 1976

**OIL CON. COM. No. _____
DIST. 3**

Position

Production Clerk
Company

Date Tenneco Oil Company

4/27/76

I hereby certify that the well location shown on this plat was plotted from first notes of actual surveys made by me or under my supervision, and that the same is true and correct to the best of my knowledge and belief.

12 March, 1976

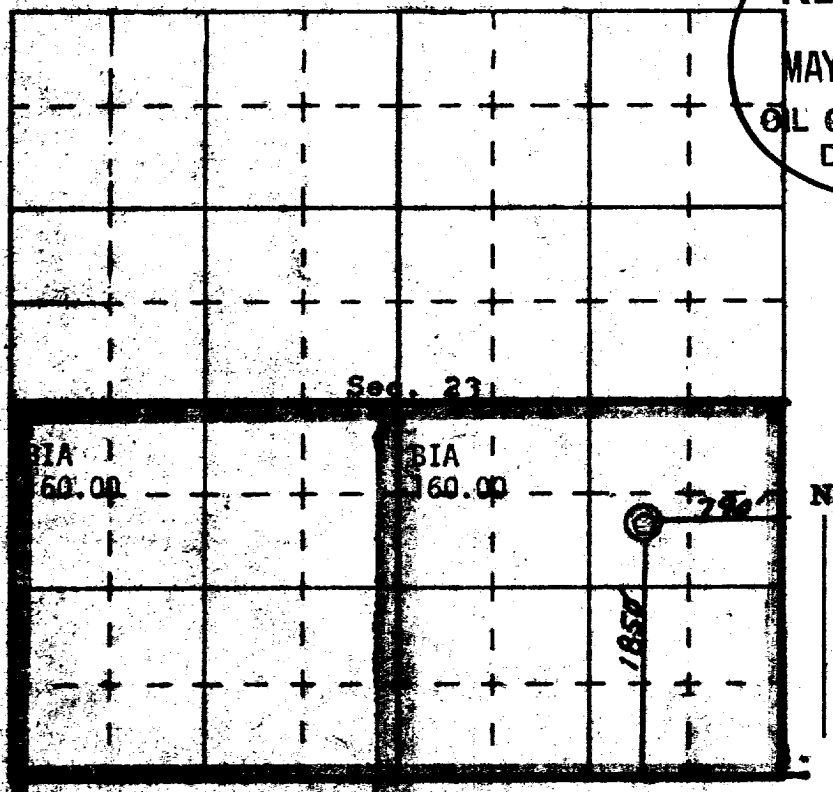
Date Surveyed

James P. Leese
Registered Professional Engineer
and/or Land Surveyor

James P. Leese

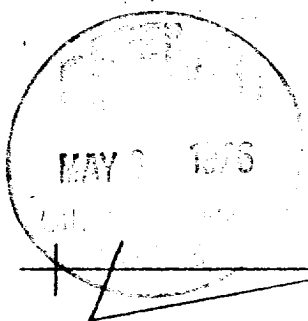
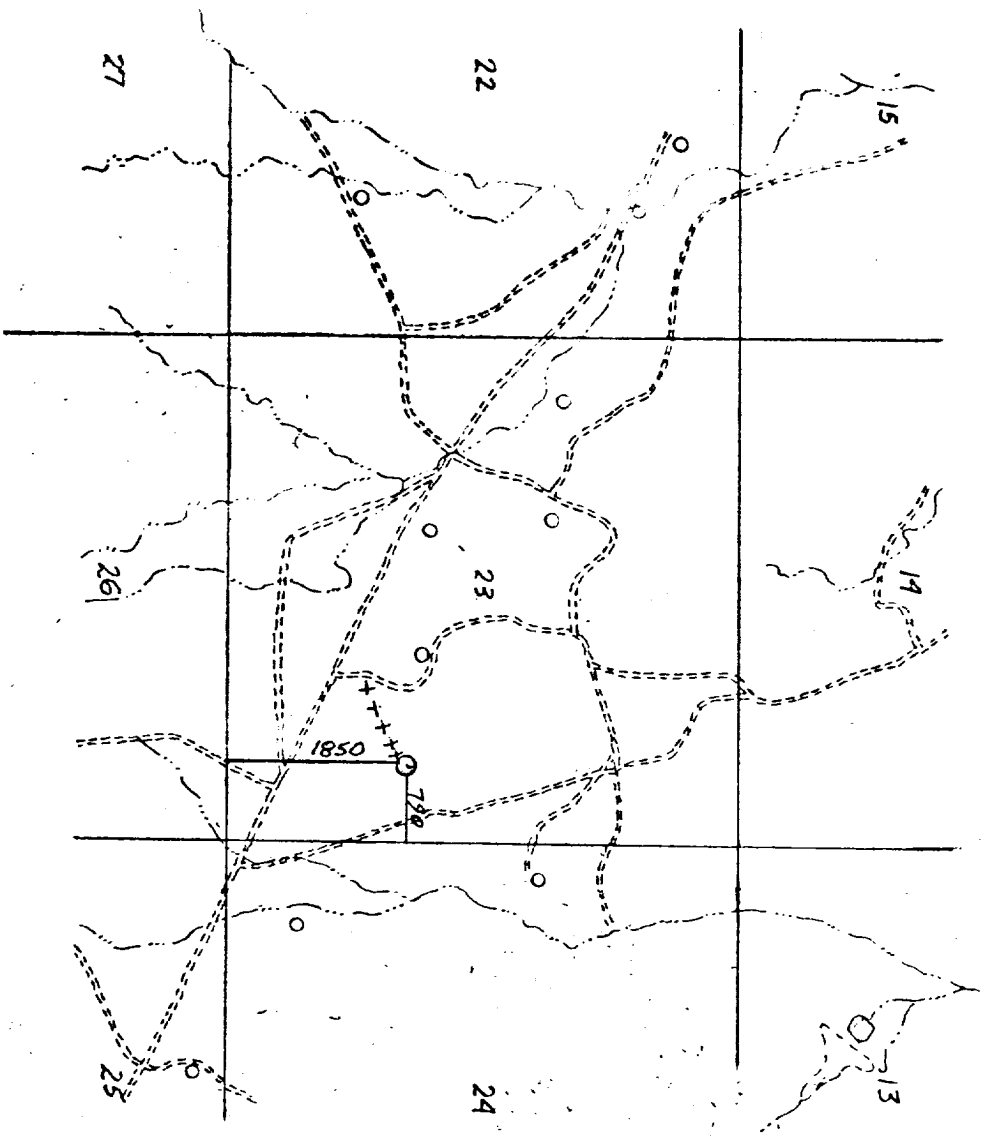
1463

Certificate No.



N00-C-14-20-5249

N00-C-14-20-5250



1" = 2000'

+++ Proposed Road

CANYON # 22

Vicinity Map for

Tenneco Oil Company
Well location in the SE/4
of Section 23, T25N, R11W
N.M.R.M., San Juan County,
New Mexico.

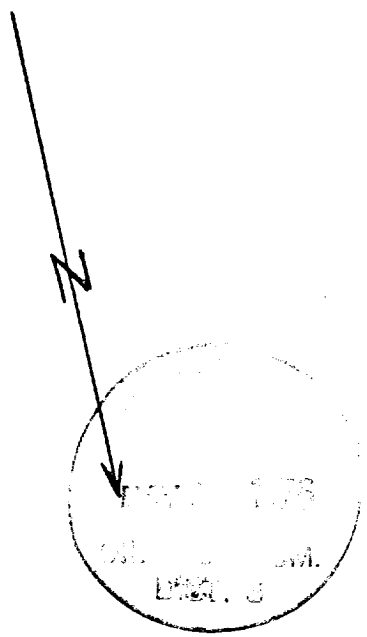
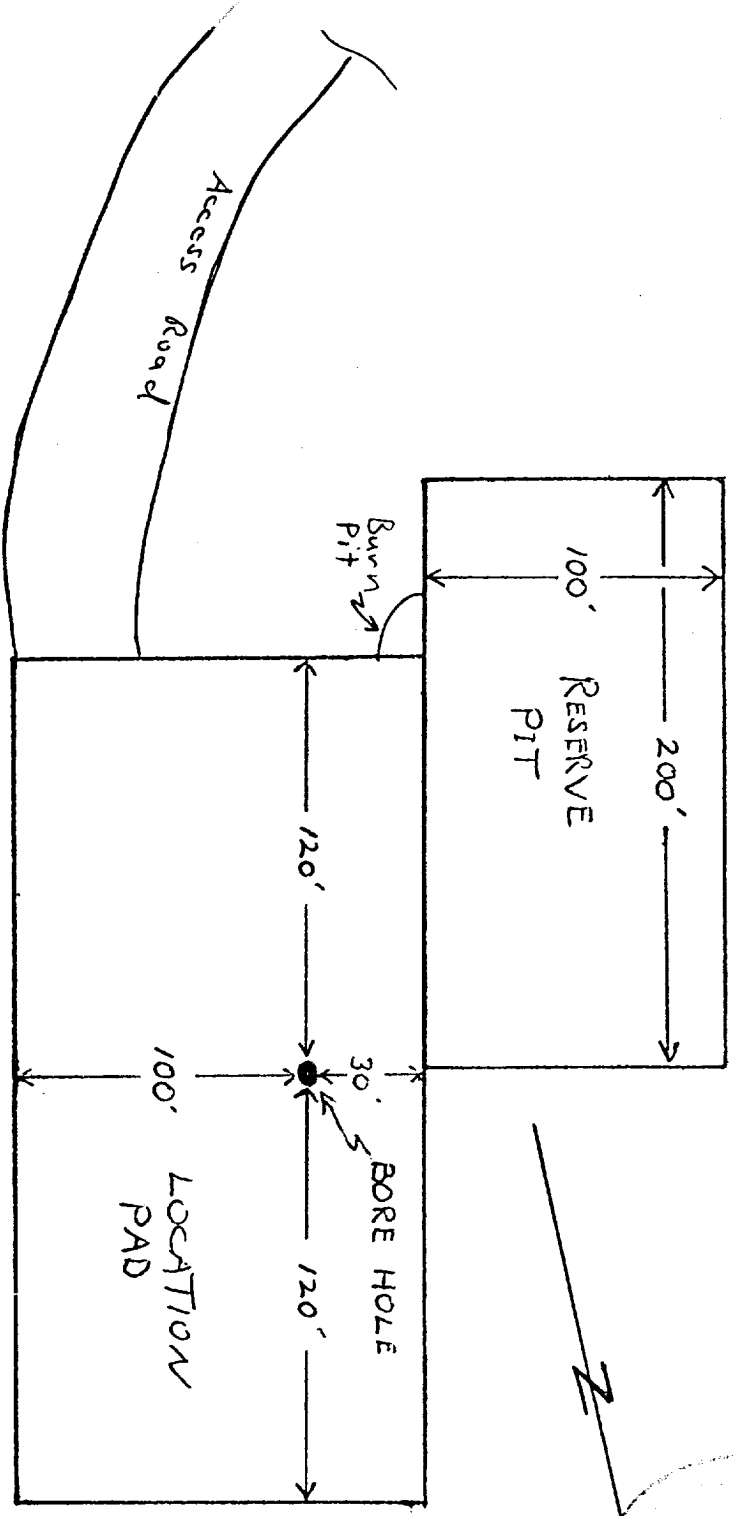
Scale: 1" = 2000'

Date: 15 March 1976

San Juan Engineering Co.
Farmington, New Mexico

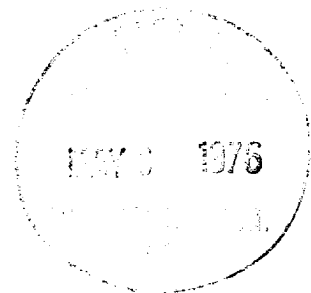
RIG LAYOUT

CANYON # 22



Canyon #22
SURFACE USE PLAN

1. Shown on attached map.
2. Shown on attached map. Approximately 1000' of 14' wide road will be required.
3. Shown on attached map.
4. Shown on attached map.
5. This is expected to be a dry gas well, therefore, a tank battery will not be required.
6. Water will be hauled from a private well.
7. All waste material will be buried in reserve pit at time of location clean up.
8. No camps will be associated with this operation.
9. No airstrip will be built for this operation.
10. Shown on attached diagram.
11. Upon completion or abandonment of this well, the location will be cleaned and levelled, and a dry hole marker placed, if applicable.
12. The location is sandy, rocky, typical for the area. Vegetation is sage brush.



Canyon #22

7 - POINT WELL CONTROL PLAN

1. Surface casing: 8 5/8", 24#, K-55, approximately 300' , new condition.
2. Casing head will be 10", 900 series, 3000 psi rating.
3. No intermediate casing will be run.
4. Blowout preventors: Hydraulic, double ram, 10", one set of rams will be provided for each size drill pipe in the hole. One set of blind rams at all times. Fill line will be 2". Kill line will be 2" and choke relief line will be 2" with variable choke.
5. Auxiliary equipment:
 - (1) Kelly cock will be in use at all times.
 - (2) Stabbing valve to fit drill pipe will be present on floor at all times.
 - (3) Mud monitoring will be visual, no abnormal pressures are anticipated in this area.
6. This is an area of known pressure. Maximum anticipated pressure at 6250' T.D. is 2500 psi.
7. Drilling Fluids:

0 - 5500' \pm	Gel water with solids control to maintain good conditions.
5500' \pm - T.D.	Gel water with 50 sec. viscosity or greater, and 9 cc or less water loss.

