

UNITED STATES
DEPARTMENT OF THE INTERIOR
GEOLOGICAL SURVEY

APPLICATION FOR PERMIT TO DRILL, DEEPEN, OR PLUG BACK

1a. TYPE OF WORK

DRILL ☒DEEPEN ☐PLUG BACK ☐

b. TYPE OF WELL

OIL
WELL ☐GAS
WELL ☐

OTHER Wildcat

SINGLE
ZONE ☒MULTIPLE
ZONE ☐

2. NAME OF OPERATOR

AMOCO PRODUCTION COMPANY

3. ADDRESS OF OPERATOR

501 Airport Drive, Farmington, New Mexico 87401

4. LOCATION OF WELL (Report location clearly and in accordance with any State requirements.)*

At surface

990' FNL & 1790' FWL, SECTION 14, T-25-N, R-14-W

At proposed prod. zone

Same

14. DISTANCE IN MILES AND DIRECTION FROM NEAREST TOWN OR POST OFFICE*

23-1/2 Miles South of Farmington, NM

16. DISTANCE FROM PROPOSED*

LOCATION TO NEAREST
PROPERTY OR LEASE LINE, FT.
(Also to nearest drlg. unit line, if any)

990'

18. DISTANCE FROM PROPOSED LOCATION*

TO NEAREST WELL, DRILLING, COMPLETED,
OR APPLIED FOR, ON THIS LEASE, FT.

None

16. NO. OF ACRES IN LEASE

2560.00

19. PROPOSED DEPTH

1192'

17. NO. OF ACRES ASSIGNED

TO THIS WELL
160

20. ROTARY OR CABLE TOOLS

Rotary

21. ELEVATIONS (Show whether DF, RT, GR, etc.)

6112' GL

22. APPROX. DATE WORK WILL START*

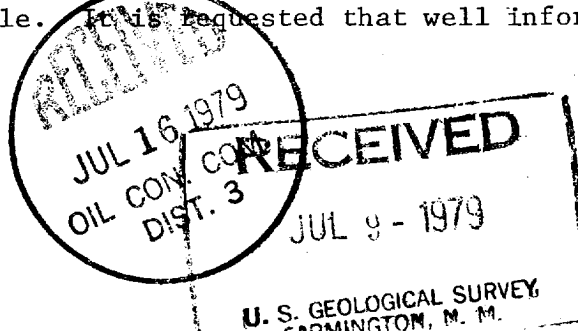
As soon as permitted

23.

PROPOSED CASING AND CEMENTING PROGRAM

| SIZE OF HOLE | SIZE OF CASING | WEIGHT PER FOOT | SETTING DEPTH | QUANTITY OF CEMENT |
|--------------|----------------|-----------------|---------------|----------------------------|
| 15" | (New) 13-3/8" | 54.50# | 250' | 160 SX Class "B" Neat |
| 9-7/8" | (New) 7-5/8" | 26.40# | 1192' | 475 SX Class "B" 50:50 Poz |

This wildcat will be drilled to a depth of 1192' to test the Mt. Nebo Fruitland. Completion plans will be made after logs are run. Additional information required by NTL-6 for the application to drill and a Multi-Point Surface Use Plan are attached. This well is being drilled as a TITE hole. It is requested that well information be kept confidential.



IN ABOVE SPACE DESCRIBE PROPOSED PROGRAM: If proposal is to deepen or plug back, give data on present productive zone and proposed new productive zone. If proposal is to drill or deepen directionally, give pertinent data on subsurface locations and measured and true vertical depths. Give blowout preventer program, if any.

24.

SIGNED

B. E. Jachell

TITLE

District Engineer

DATE

July 5, 1979

(This space for Federal or State office use)

PERMIT NO.

APPROVAL DATE

APPROVED BY

TITLE

DATE

CONDITIONS OF APPROVAL, IF ANY:

*See Instructions On Reverse Side

NMOCC

OIL CONSERVATION DIVISION

STATE OF NEW MEXICO

P. O. BOX 2088

Form C-102
Revised 10-1-78

ENERGY AND MINERALS DEPARTMENT

SANTA FE, NEW MEXICO 87501

All distances must be from the outer boundaries of the Section.

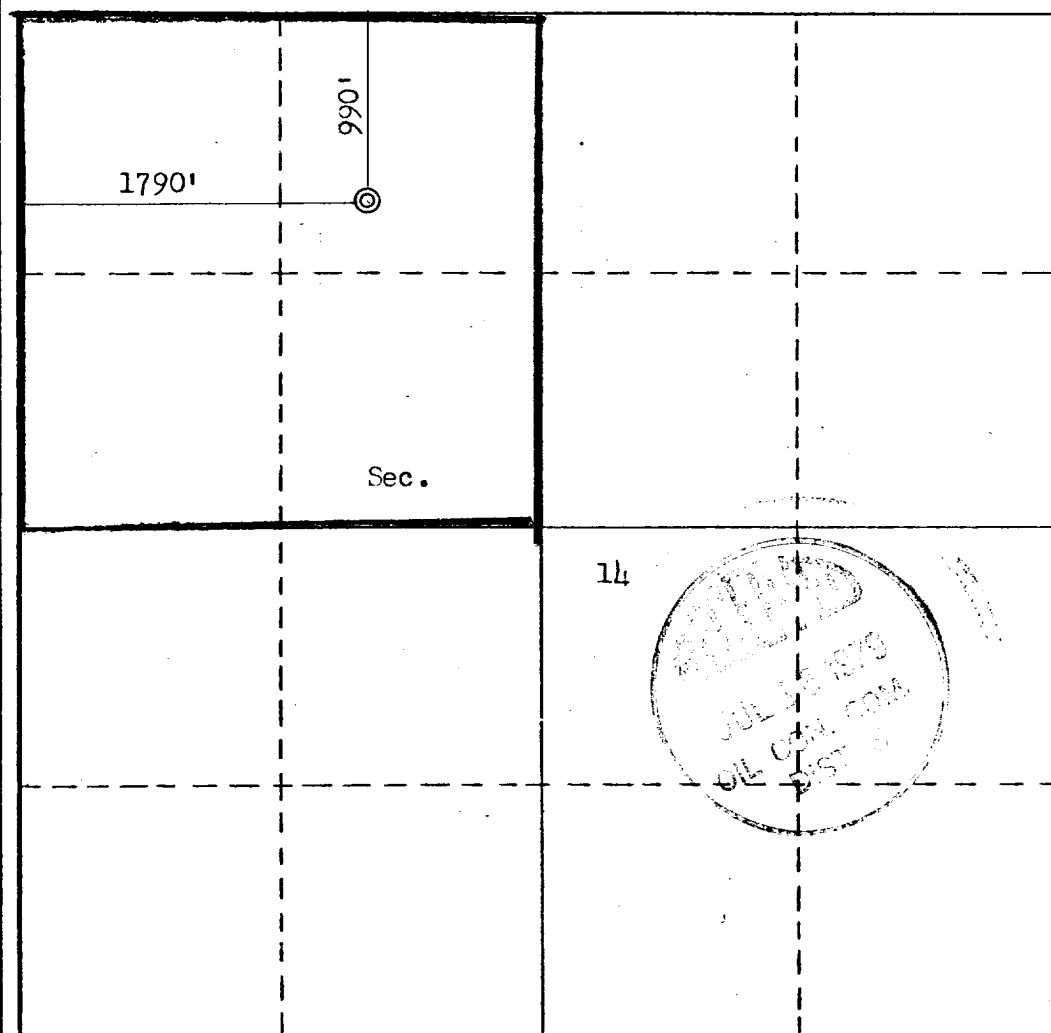
| | | | | | | | | |
|---|--|-----------------|-----------------------------|---------------------------------|--|---------------|--|--|
| Operator AMOCO PRODUCTION COMPANY | | | Lease NAVAJO TRIBAL "AG" | | | Well No. 1 | | |
| Unit Letter C | Section 14 | Township 25N | Range 11W | County San Juan | | | | |
| Actual Footage Location of Well: 990 feet from the North line and 1790 feet from the West line | | | | | | | | |
| Ground Level Elev. 6112 | Producing Formation Pictured Cliffs | | Pool Wildcat | Dedicated Acreage: 160 Acres | | | | |

1. Outline the acreage dedicated to the subject well by colored pencil or hatchure marks on the plat below.
2. If more than one lease is dedicated to the well, outline each and identify the ownership thereof (both as to working interest and royalty).
3. If more than one lease of different ownership is dedicated to the well, have the interests of all owners been consolidated by communitization, unitization, force-pooling, etc?

☐ Yes ☐ No If answer is "yes," type of consolidation _____

If answer is "no," list the owners and tract descriptions which have actually been consolidated. (Use reverse side of this form if necessary.) _____

No allowable will be assigned to the well until all interests have been consolidated (by communitization, unitization, forced-pooling, or otherwise) or until a non-standard unit, eliminating such interests, has been approved by the Commission.



CERTIFICATION

I hereby certify that the information contained herein is true and complete to the best of my knowledge and belief.

B. E. Fackrell

Name
B. E. FACKRELL

Position
DISTRICT ENGINEER

Company
AMOCO PRODUCTION COMPANY

Date
JUNE 29, 1979

I hereby certify that the well location shown on this plat was plotted from field notes of actual surveys made by me or under my supervision, and that the same is true and correct to the best of my knowledge and belief.

Date Surveyed

May 5, 1979
Registered Professional Engineer
and/or Land Surveyor

Fred B. Kerp Jr.
Fred B. Kerp Jr.

Certificate No.

3950

0 330 660 990 1320 1650 1980 2310 2640 2000 1500 1000 500 0

SUPPLEMENTAL INFORMATION TO FORM 9-331C
NAVAJO TRIBAL "AG" NO. 1
990' FNL & 1790' FWL, SECTION 14, T25N, R14W
SAN JUAN COUNTY, NEW MEXICO

The geologic name of the surface formation is the Cretaceous Kirtland Shale and Fruitland.

Estimated tops of important potential hydrocarbon bearing formations:

| <u>FORMATION</u> | <u>DEPTH</u> | <u>ELEVATION</u> |
|------------------|--------------|------------------|
| Fruitland Sgt. | 842' | 5283' |
| Pictured Cliffs | 962' | 5163' |
| Lewis Shale | 1042' | 5083' |
| TD | 1192' | 4933' |

Estimated KB elevation: 6125'

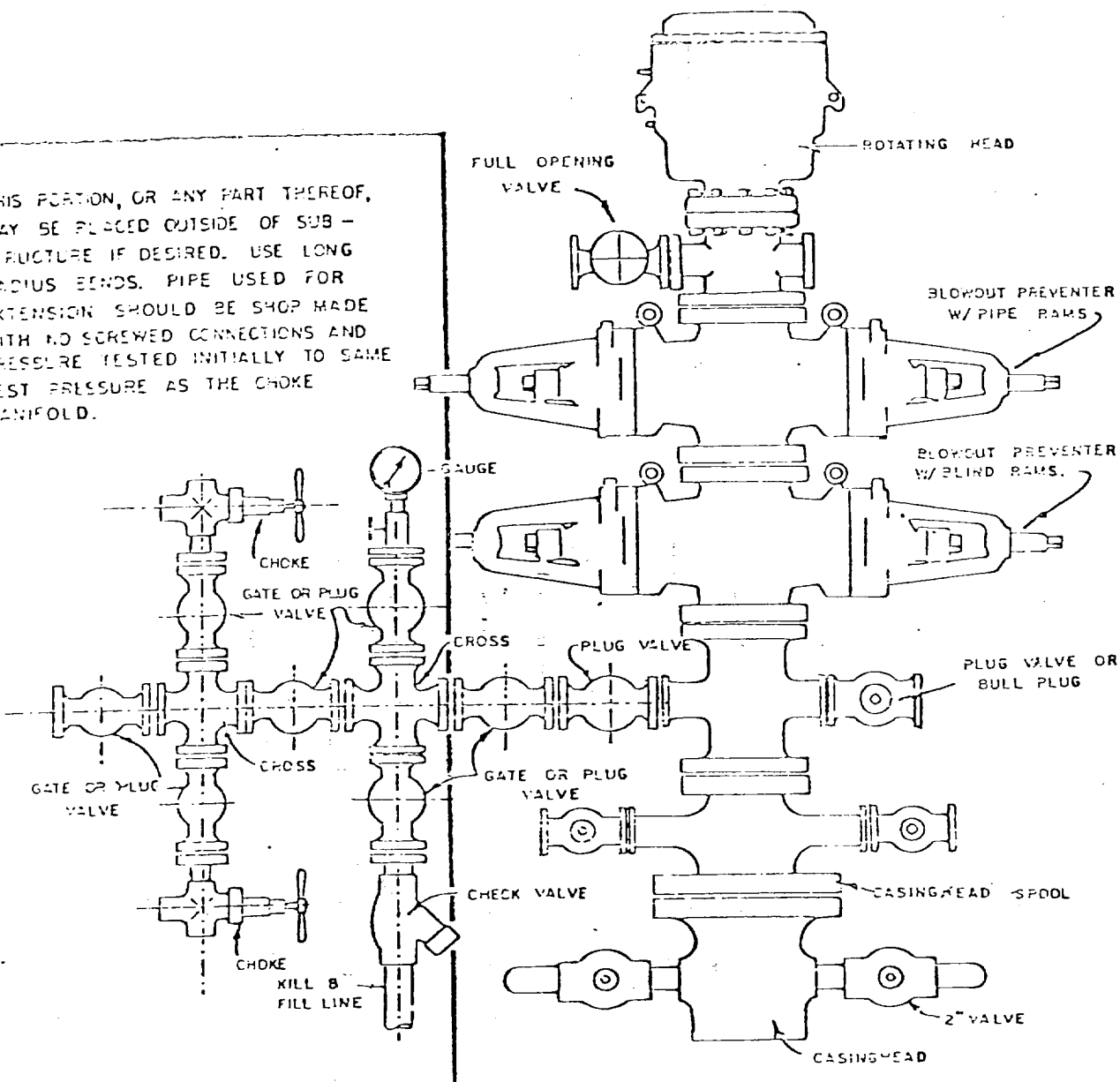
Drilling fluid to TD will be a low solids non-dispersed mud system. Open hole logging program will include logs from TD to below surface casing:

Induction Electric - Gamma Ray - Compensated Neutron
Compensated Density - Gamma Ray

Completion design will be based on these logs. A core will be taken from approximately 942'-962' and a drill stem test with a water analysis will be taken from 932'-962'. Operations will commence when permitted and last approximately 2 weeks.

Amoco's standard blowout prevention will be employed (see attached drawing).

THIS PORTION, OR ANY PART THEREOF, MAY BE PLACED OUTSIDE OF SUB-STRUCTURE IF DESIRED. USE LONG RADIUS BENDS. PIPE USED FOR EXTENSION SHOULD BE SHOP MADE WITH NO SCREWED CONNECTIONS AND PRESSURE TESTED INITIALLY TO SAME TEST PRESSURE AS THE CHOKE MANIFOLD.



BLOWOUT PREVENTER HOOKUP

MULTI-POINT SURFACE USE PLAN

NAVAJO TRIBAL "AG" NO. 1
990' FNL & 1790' FWL, SECTION 14, T25N, R14W
SAN JUAN COUNTY, NEW MEXICO

1. The attached topographic map shows the proposed route to the location.
2. It will be necessary to blade and improve 12.6 miles of existing road and trail and build 1.8 miles of new road 20 feet wide and bar ditch on one side.
3. Existing oil and gas wells within a two-mile radius of our proposed well have been spotted on the topographic map.
4. There are no facilities within a one-mile radius which are owned or controlled by the operator.
5. Water for drilling will be hauled from the San Juan River.
6. No construction materials will be hauled in for this location. Existing material will be used.
7. A 75' X 75' pit will be built on location to contain all waste material and fluids. Upon completion of the well, fluid will be hauled out in trucks.
8. There are neither airstrips nor camps in the vicinity.
9. The well site layout, reserve, burn and trash pits are shown on the attached Drill Site Specification Sheet. A 1-foot cut will be necessary on southwest side.
10. Restoration of the surface will be accomplished by cleaning up and leveling upon completion of the well. Drilling mud will be hauled away and the reserve pit back filled. Reseeding of the site will be carried out as instructed by the Bureau of Indian Affairs.
11. The general topography is a rolling plateau with loamy sandy soil with vegetation consisting of native grasses and sagebrush.

The site was inspected by representatives of the U. S. Geological's Farmington Office, Bureau of Indian Affairs and Amoco personnel. Cultural resources inspection was conducted by Dabney Ford, Archaeologist from San Juan College.

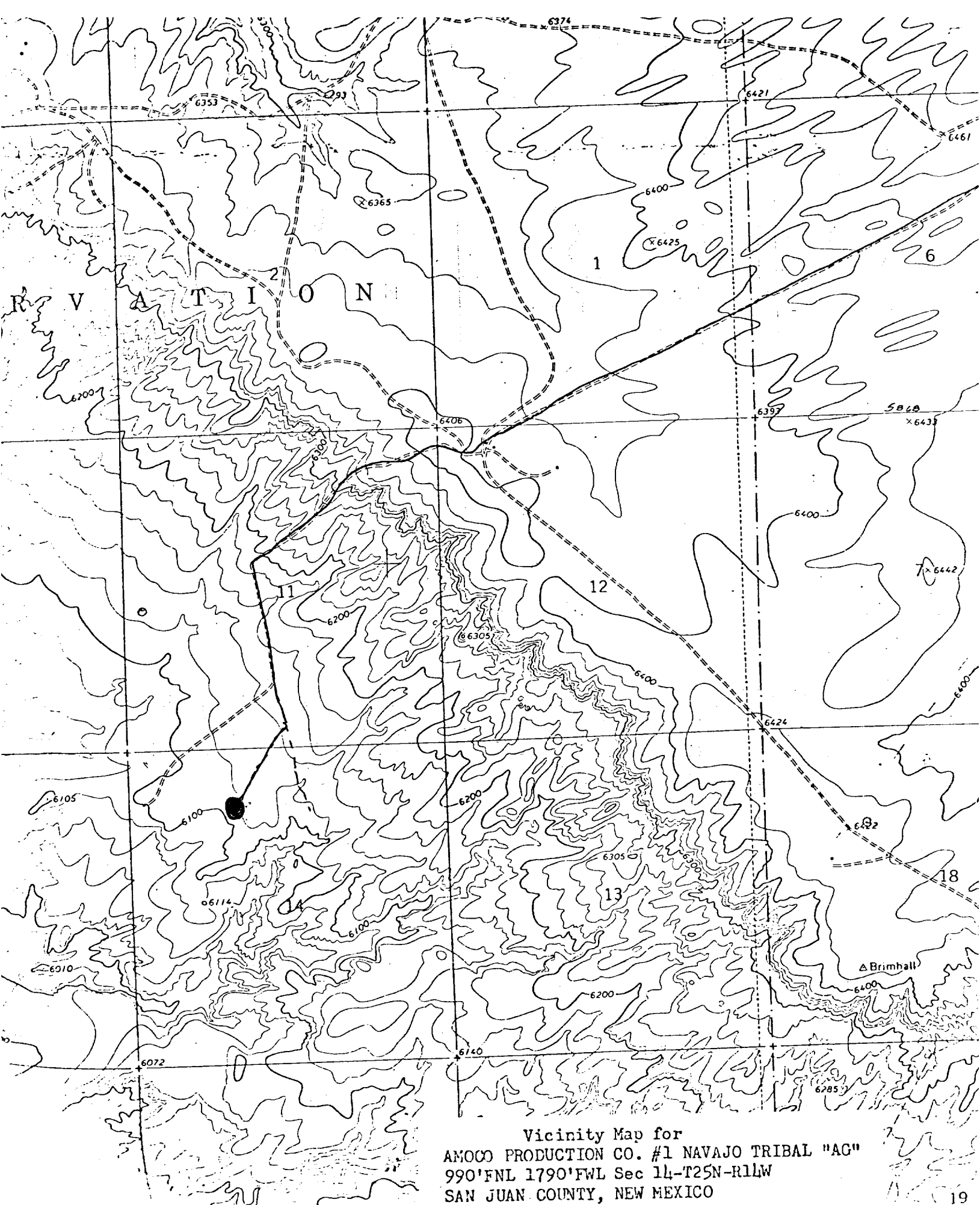
12. Operator's Representative: R. W. Schroeder
Phone: Office - 505-325-8841; Home - 505-325-6164
Address: 501 Airport Drive, Farmington, NM 87401

Certification: I hereby certify that I, or persons under my direct supervision, have inspected the proposed drillsite and access route, that I am familiar with the conditions which presently exist; that the statements made in this plan are, to be best of my knowledge, true and correct; and, that the work associated with the operations proposed herein will be performed by AMOCO PRODUCTION COMPANY and its contractors and sub-contractors in conformity with this plan and the terms and conditions under which it is approved.

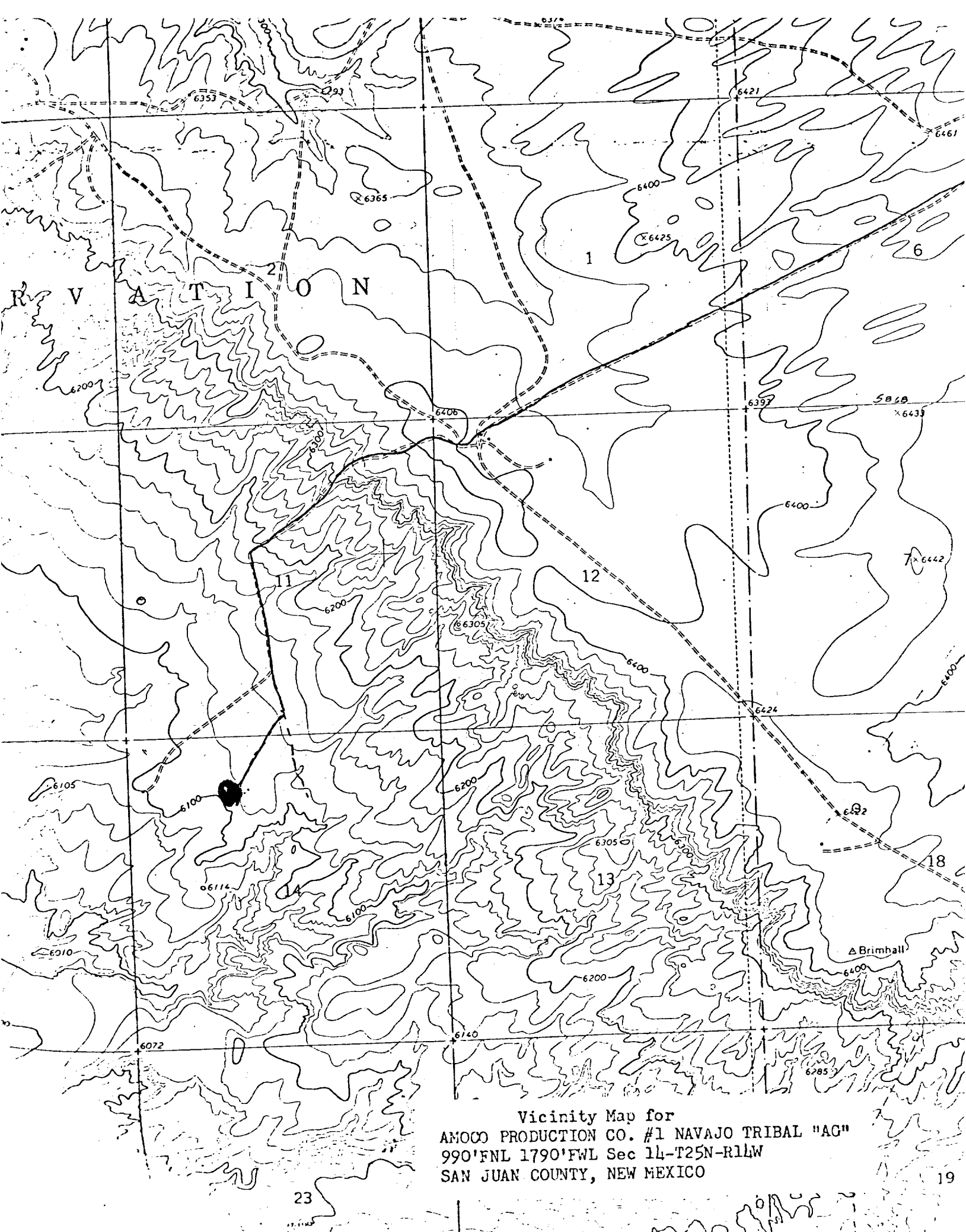
Date

7/3/79

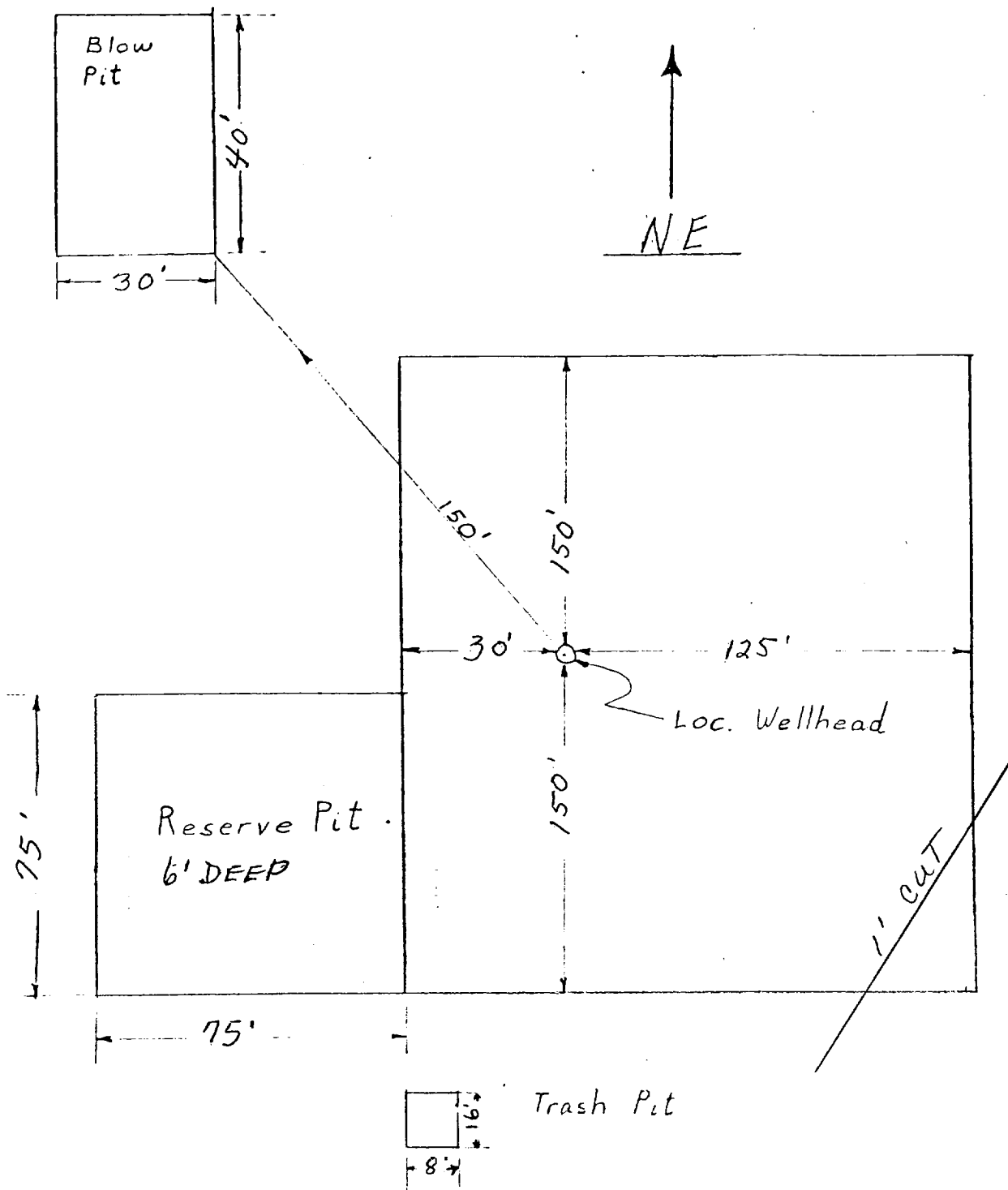
R. W. Schroeder
R. W. Schroeder, District Superintendent



Vicinity Map for
AMOCO PRODUCTION CO. #1 NAVAJO TRIBAL "AG"
990'FNL 1790'FWL Sec 14-T25N-R11W
SAN JUAN COUNTY, NEW MEXICO



Vicinity Map for
AMOCO PRODUCTION CO. #1 NAVAJO TRIBAL "AG"
990'FNL 1790'FWL Sec 14-T25N-R14W
SAN JUAN COUNTY, NEW MEXICO



APPROXIMATELY 1.2 Acres

| | |
|---|-------------|
| Amoco Production Company | SCALE: NONE |
| DRILLING LOCATION SPECS NAVAJO TRIBAL "AG" NO. 1 | DRG. NO. |