

UNITED STATES  
DEPARTMENT OF THE INTERIOR  
GEOLOGICAL SURVEY

5. LEASE DESIGNATION AND SERIAL NO.  
SF 078228B

6. IF INDIAN, ALLOTTEE OR TRIBE NAME

7. UNIT AGREEMENT NAME

8. FARM OR LEASE NAME  
Colket

9. WELL NO.  
#1E

10. FIELD AND POOL, OR WILDCAT

Basin Dakota

11. SEC., T., R., M., OR BLK.  
AND SURVEY OR AREA

Sec 15 T25N R11W

12. COUNTY OR PARISH 13. STATE

San Juan

NM

APPLICATION FOR PERMIT TO DRILL, DEEPEN, OR PLUG BACK

1a. TYPE OF WORK

DRILL ☒

DEEPEN ☐

PLUG BACK ☐

b. TYPE OF WELL

OIL  
WELL ☐

GAS  
WELL ☒

OTHER

SINGLE  
ZONE ☐

MULTIPLE  
ZONE ☐

2. NAME OF OPERATOR

Jerome P. McHugh

3. ADDRESS OF OPERATOR

Box 208, Farmington, NM 87401

4. LOCATION OF WELL (Report location clearly and in accordance with any State requirements.)\*

At surface

1850' FSL - 1520' FWL

At proposed prod. zone

14. DISTANCE IN MILES AND DIRECTION FROM NEAREST TOWN OR POST OFFICE\*

25 miles south of Bloomfield, NM

15. DISTANCE FROM PROPOSED\*

LOCATION TO NEAREST  
PROPERTY OR LEASE LINE, FT.  
(Also to nearest drlg. unit line, if any)

1520'

16. NO. OF ACRES IN LEASE

160

17. NO. OF ACRES ASSIGNED  
TO THIS WELL

1/320

18. DISTANCE FROM PROPOSED LOCATION\*

TO NEAREST WELL, DRILLING, COMPLETED,  
OR APPLIED FOR, ON THIS LEASE, FT.

3430'

19. PROPOSED DEPTH

6016'

20. ROTARY OR CABLE TOOLS

Rotary

21. ELEVATIONS (Show whether DF, RT, GR, etc.)

6371' GL

22. APPROX. DATE WORK WILL START\*

Feb. 2, 1979

23.

PROPOSED CASING AND CEMENTING PROGRAM

SIZE OF HOLE	SIZE OF CASING	WEIGHT PER FOOT	SETTING DEPTH	QUANTITY OF CEMENT
12-1/4"	8-5/8"	24#	450'	235 sx
7-7/8"	4-1/2"	10.5#	6016'	375 sx 1st stage
				400 sx 2nd stage

Plan to drill with mud to test Basin Dakota Formation. Plan to run IES log to TD. If productive, plan to set 4-1/2" csg, cement in two stages, selectively perforate, frac, clean out after frac, run 1-1/2" tbg and complete well

Plan to use BOP furnished by rig while drilling (10" 3000 psi hydraulic)

Plan to use BOP rental while completing (6" 3000 psi double gate manual)

Gas Dedicated

APPROVAL VALID  
FOR 90 DAYS UNLESS  
DRILLING COMMENCED,

EXPIRES 4-23-80

RECEIVED

DEC 21 1979

U. S. GEOLOGICAL SURVEY  
FARMINGTON, N. M.

IN ABOVE SPACE DESCRIBE PROPOSED PROGRAM: If proposal is to deepen or plug back, give data on present production zone and proposed new productive zone. If proposal is to drill or deepen directionally, give pertinent data on subsurface locations and measures and true vertical depth. Give blowout preventer program, if any.

24.

SIGNED

Thomas A. Dugan

TITLE

Agent

(This space for Federal or State office use)

PERMIT NO.

APPROVAL DATE

APPROVED BY

TITLE

CONDITIONS OF APPROVAL, IF ANY:

DRILLING OPERATIONS ARE  
SUBJECT TO THE ATTACHED  
"CONTRACT"

ak Frank

NMOCC

\*See Instructions On Reverse Side

RECEIVED

JAN 24 1980

12-19-79

OIL CON. COM.  
DIST.

APPROVED

JAN 23 1980

ACTING DISTRICT ENGINEER

NEW MEXICO OIL CONSERVATION COMMISSION  
 LOCATION AND ACREAGE DEDICATION PLAT

Form C-102  
 Supersedes C-128  
 Effective 1-1-65

All distances must be from the outer boundaries of the Section.

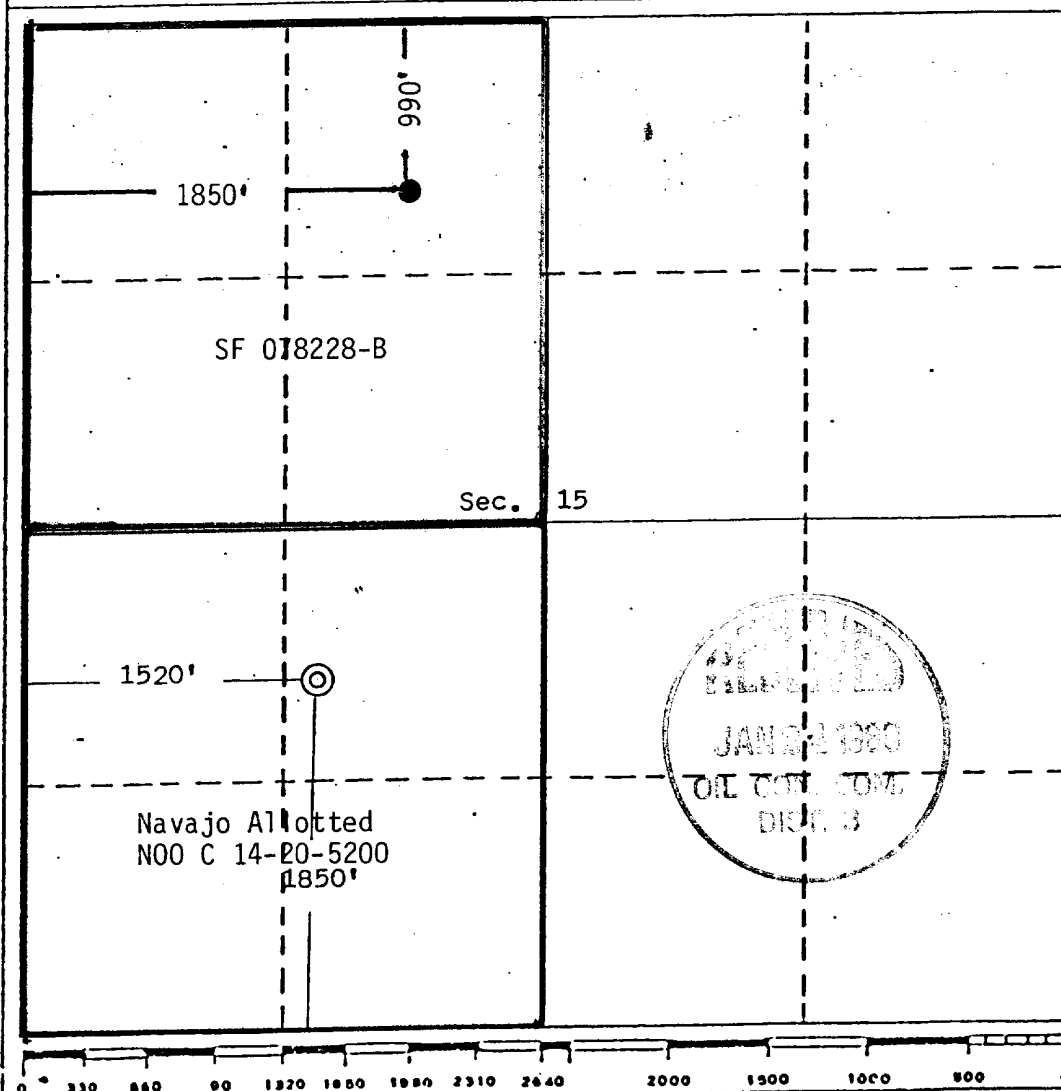
Operator Jerome P. McHugh			Lease Colket		Well No. 1E
Unit Letter K	Section 15	Township 25 North	Range 11 West	County San Juan	
Actual Footage Location of Well:					
1850 feet from the South line and		1520 feet from the West line			
Ground Level Elev. 6371	Producing Formation Dakota	Pool Basin	Dedicated Acreage: 320 Acres		

1. Outline the acreage dedicated to the subject well by colored pencil or hachure marks on the plat below.
2. If more than one lease is dedicated to the well, outline each and identify the ownership thereof (both as to working interest and royalty).
3. If more than one lease of different ownership is dedicated to the well, have the interests of all owners been consolidated by communitization, unitization, force-pooling, etc?

☒ Yes ☐ No If answer is "yes," type of consolidation Communitization SW 874

If answer is "no," list the owners and tract descriptions which have actually been consolidated. (Use reverse side of this form if necessary.)

No allowable will be assigned to the well until all interests have been consolidated (by communitization, unitization, forced-pooling, or otherwise) or until a non-standard unit, eliminating such interests, has been approved by the Commission.



CERTIFICATION

I hereby certify that the information contained herein is true and complete to the best of my knowledge and belief.

*Thomas A. Dugan*

Name  
Thomas A. Dugan

Position  
Agent

Company  
Jerome P. McHugh

Date  
1-4-80

I hereby certify that the well location shown on this plat was plotted from field notes of actual surveys made by me or under my supervision and that the same is true and correct to the best of my knowledge and belief.

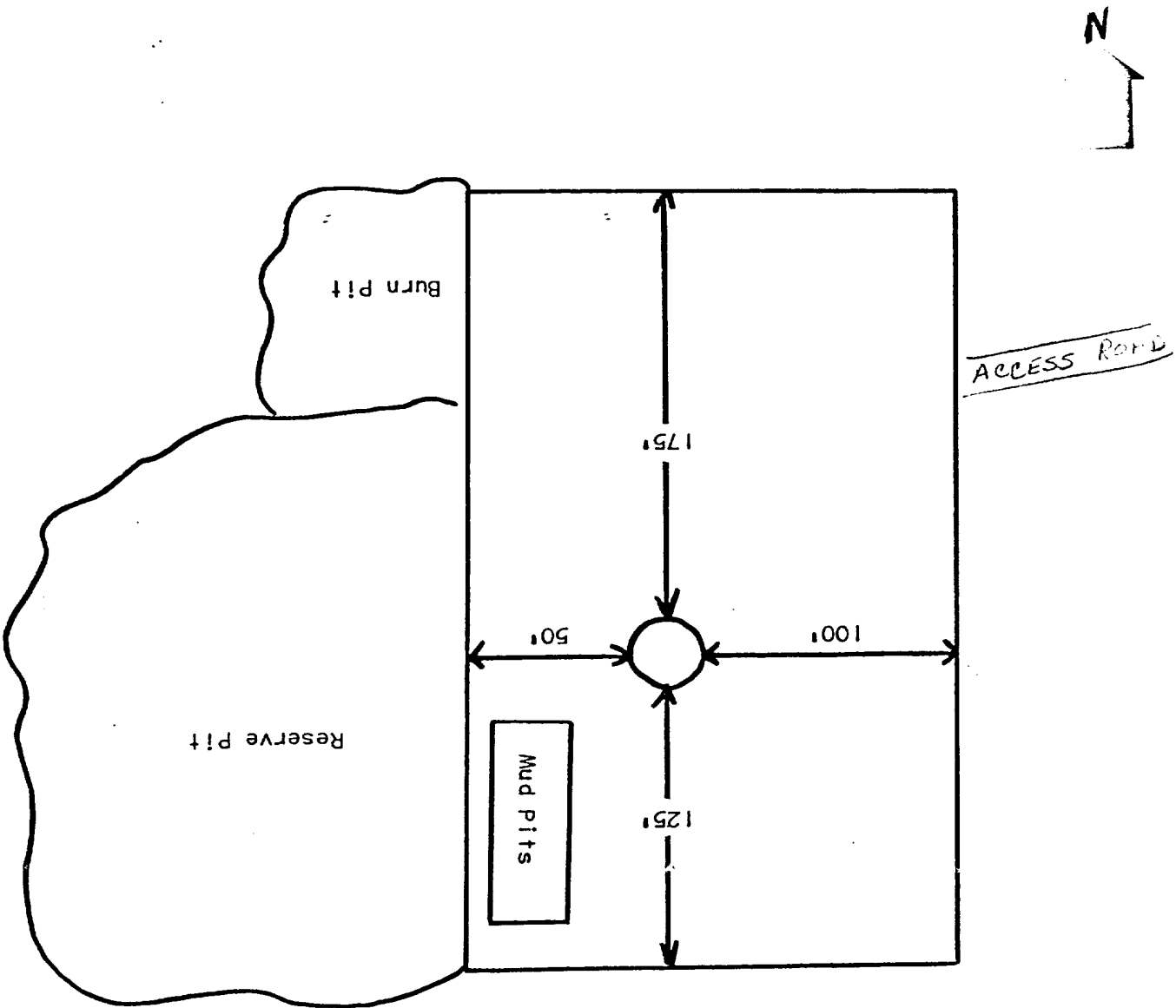
Date Surveyed  
December 13, 1979

Registered Professional Engineer  
and/or Land Surveyor

*Edgar L. Risenhoover*

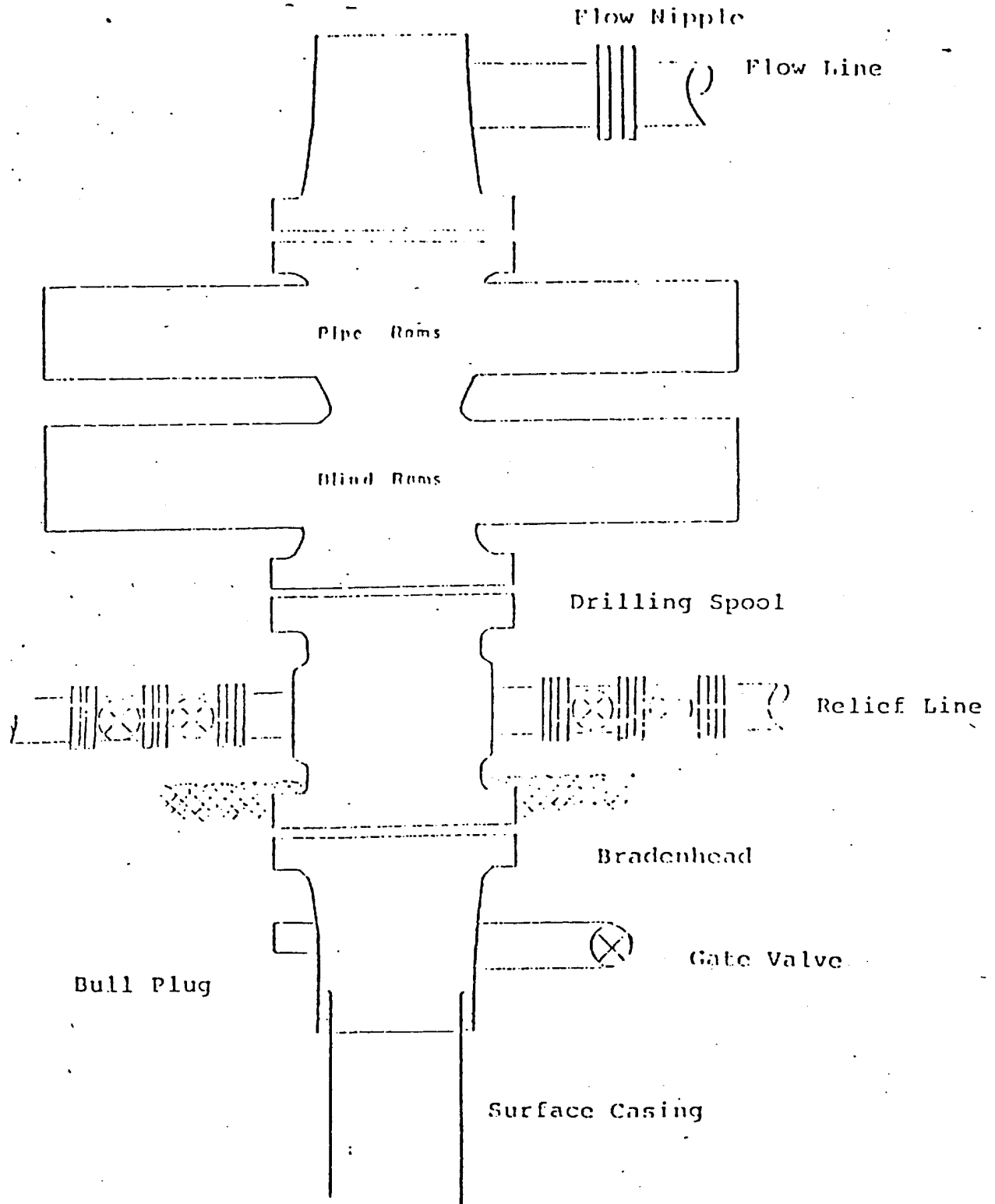
Certificate No. 5979  
Edgar L. Risenhoover, L.S.

Jerome P. McHugh  
Colket #1E  
Proposed Location Layout



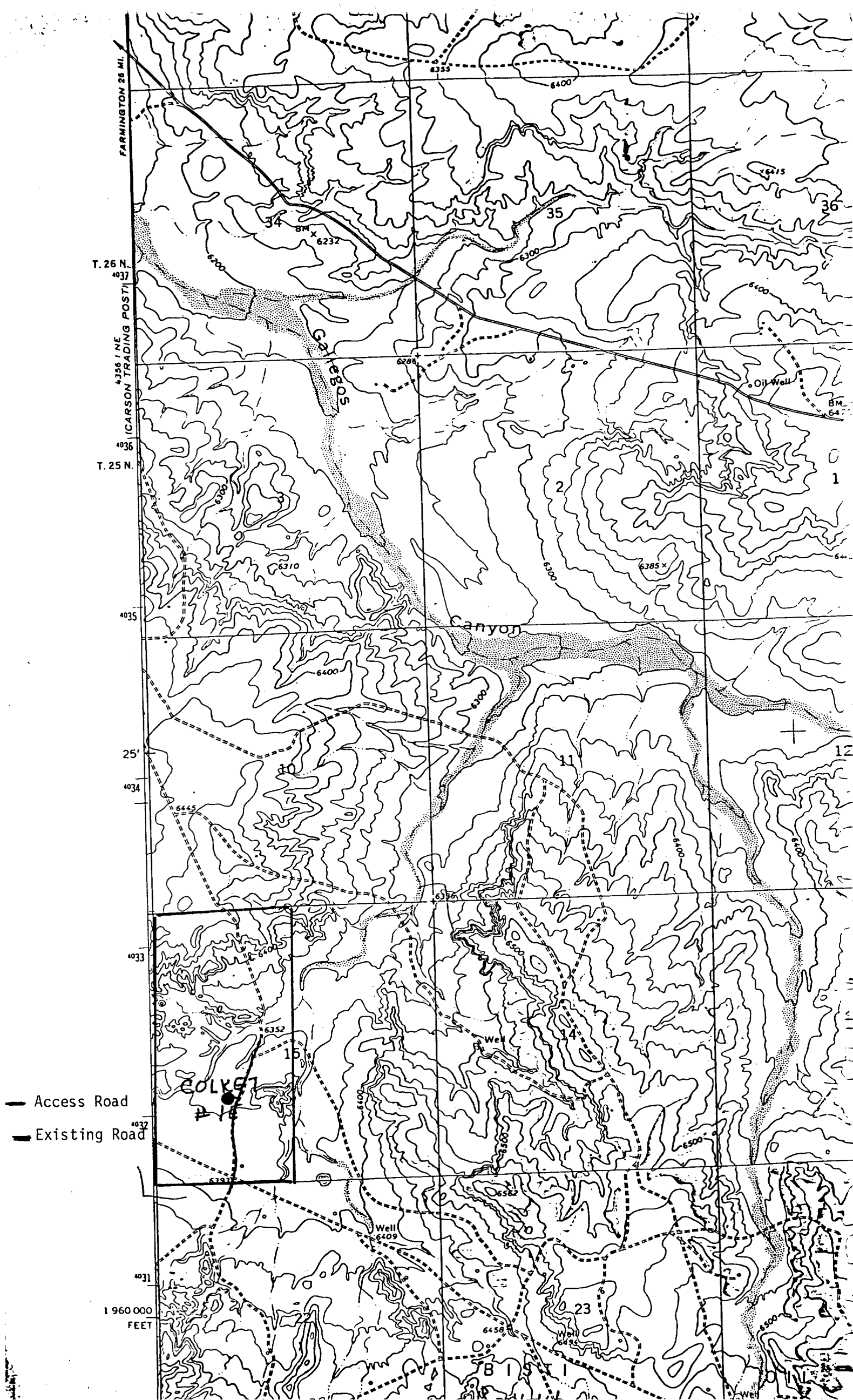
# TYPICAL BOP INSTALLATION

FOR DAKOTA WELL



Series 900 Double Gate BOP, rated  
at 3000 psi Working Pressure

When gas drilling operations begin a Shaffer type  
50 or equivalent rotating head is installed on top of  
the flow nipple and the flow line is converted into  
a blowie line.



## OPERATIONS PLAN

OPERATOR: Jerome P. McHugh  
WELL NAME: Colket #1E  
FIELD: Basin Dakota  
LOCATION: 1850' FSL - 1520' FWL Sec 15 T25N R11W San Juan County, New Mexico  
ELEVATION: 6371' GL

EXPECTED FORMATION TOPS:	Ojo Alamo	325'	Point Lookout	3727'
	Kirtland	427'	Mancos	3921'
	Fruitland	870'	Gallup	4550'
	Pictured Cliffs	1243'	Greenhorn	5649'
	Lewis	1420'	Graneros	5715'
	Cliff House	1974'	Dakota	5816'
	Menefee	2823'	Total Depth	6016'

LOGGING PROGRAM: IES and CDL

SAMPLES: Samples will be taken beginning at 5750'

### CASING PROGRAM

<u>Hole Size</u>	<u>Depth</u>	<u>Csg Size, Wt, Grade, &amp; Condition</u>	<u>Cementing Program</u>
12-1/4"	450'	8-5/8" 24# K-55 8R ST&C new	Cement surface pipe through Ojo Alamo w/235 sx class "B" neat w/2% CaCl
7-7/8"	6016'	4-1/2" 10.5# J-55 ST&C new	Cement 1st stage w/200 sx w/8% gel plus 175 sx class "B" neat all w/1/4# gel flake per sx. 1st stage: 400 cu ft  2nd stage: Cement w/Baker stage tool thru Mesaverde 3730' w/350 sx 65-35 plus 12% gel and 1/4# cello flake/sx followed by 50 sx class "B" neat 2nd stage: 1230 cu ft  TOTAL SLURRY 1230 cu ft

### WELLHEAD EQUIPMENT

10" 600 series "new"  
Casing head 8-5/8" x 10" 600 series "new"  
Tubing head 10" 600 series with screwed outlets x 6" 600 series "new"

Office	-	325-0238
Tom Dugan		325-5694
Jim Jacobs		325-8353
Kurt Fagrelus		334-3381
Bill Donovan		325-5692
James Hazen		

DEVELOPMENT PLAN

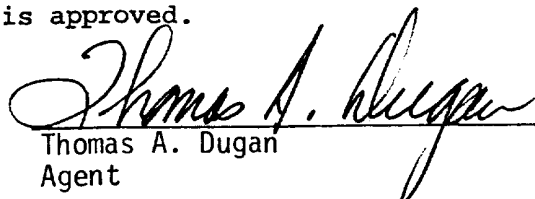
Jerome P. McHugh

Colket #1E

1. Existing roads and existing wells are shown on attached plat.
2. Planned access from existing road approximately 15' to new location. Will leave natural grass and small vegetation on roadway. Will remove large brush or trees from road. Do not plan to make road grade or bar ditches. Will bottom-out any arroyo we cross and not install culverts.
3. Location of well: 1850' FSL - 1520' FWL  
Sec 15 T25N R11W  
San Juan County, NM
4. No additional well(s) planned on this lease at this time.
5. Separator and flow line will be located within 50' of wellhead.
6. Water will be secured from Hilltop Liquors or Carson Trading Post watering hole.
7. Waste materials will be buried on location or in reserve pit.
8. No permanent camp is planned; trailer house will be used on location while drilling.
9. Do not plan to build airstrip.
10. See attached plat for proposed location layout.
11. A general description of the topography, soil characteristics, geologic features, flora and fauna; other surface-use activities and surface ownership of involved lands, proximity of water, occupied dwellings, archeological, historical or cultural sites can be found in the archeologist's report.
12. Geologic name of surface formation: Undifferentiated Tertiary
13. Estimated tops of important geologic markers:  
See Attached Operations Plan
14. Estimated depths of anticipated water, oil, gas, or other mineral bearing formations which are expected to be encountered:  
Ojo Alamo - water - 325'      Pictured Cliffs - gas - 1243'      Basin Dakota - gas - 5816'
15. We do not anticipate to encounter any abnormal pressures or temperatures or any potential hazards such as those associated with hydrogen sulfide.
16. Will clean up location, fill and level pits, level ruts in road, reseed location and road with Seed Mixture #2 and paint equipment with Badlands Brown.
17. Operator's Representative:  
Thomas A. Dugan  
Box 208  
Farmington, NM 87401
18. Certification: The following statement must be signed by the lessee's or operator's field representative who is identified in Item #17 of the Plan:

I hereby certify that I, or persons under my direct supervision, have inspected the proposed drillsite and access route; that I am familiar with the conditions which presently exist; that the statements made in this Plan are, to the best of my knowledge, true and correct; and, that the work associated with the operations proposed herein will be performed by Jerome P. McHugh and its contractors and subcontractors in conformity with this Plan and the terms and conditions under which it is approved.

Date: 12-19-79

  
Thomas A. Dugan  
Agent