

UNITED STATES  
DEPARTMENT OF THE INTERIOR  
GEOLOGICAL SURVEY

## APPLICATION FOR PERMIT TO DRILL, DEEPEN, OR PLUG BACK

## 1a. TYPE OF WORK

DRILL ☒DEEPEN ☐PLUG BACK ☐

## b. TYPE OF WELL

OIL  
WELL ☐GAS  
WELL ☒

OTHER

SINGLE  
ZONE ☒MULTIPLE  
ZONE ☐

## 2. NAME OF OPERATOR

Consolidated Oil &amp; Gas, Inc.

## 3. ADDRESS OF OPERATOR

1860 Lincoln Street, Denver, Colorado 80295

## 4. LOCATION OF WELL (Report location clearly and in accordance with any State requirements.\*)

At surface

1850' FNL, 1840' FEL

At proposed prod. zone

Same

## 14. DISTANCE IN MILES AND DIRECTION FROM NEAREST TOWN OR POST OFFICE\*

2 miles southeast of Huerfano Trading Post, New Mex.

## 15. DISTANCE FROM PROPOSED\*

LOCATION TO NEAREST  
PROPERTY OR LEASE LINE, FT.  
(Also to nearest drlg. unit No., if any)

1840'

## 16. NO. OF ACRES IN LEASE

320

17. NO. OF ACRES ASSIGNED  
TO THIS WELL

N/321-80

160

## 18. DISTANCE FROM PROPOSED LOCATION\*

TO NEAREST WELL, DRILLING, COMPLETED,  
OR APPLIED FOR, ON THIS LEASE, FT.

1920'

## 19. PROPOSED DEPTH

6720'

## 20. ROTARY OR CABLE TOOLS

Rotary

## 21. ELEVATIONS (Show whether DF, RT, GR, etc.)

6747' GR

## 22. APPROX. DATE WORK WILL START\*

## 23.

## PROPOSED CASING AND CEMENTING PROGRAM

SIZE OF HOLE	SIZE OF CASING	WEIGHT PER FOOT	SETTING DEPTH	QUANTITY OF CEMENT
12-1/4"	8-5/8"	24#	250'	200 sk. Class "B"
7-7/8"	4-1/2"	10.5 & 11.6#	6720'	470 sk., 2 stages

1. Drill 12-1/4" hole to 250'. Run and cement 8-5/8" casing to surface. Stand cemented 12 hrs.
2. Install BOP. Test casing, casinghead and BOP to 1000 psi/30 min.
3. Drill cement, shoe at 8-5/8" and 7-7/8" hole to estimated TD
4. Run electrical surveys. Based on logs, complete or abandon well.
5. If completed, 4-1/2" production casing will be cemented in two stages.
6. If abandoned, plugging instructions will be obtained from proper regulatory agencies.

RECEIVED  
JUL 21 1980  
U. S. GEOLOGICAL SURVEY  
FARMINGTON, N. M.DRILLING OPERATIONS AUTHORIZED ARE  
SUBJECT TO COMPLIANCE WITH ATTACHED  
"GENERAL REQUIREMENTS"  
OIL & GAS DIST. 3 COM.  
SEP 10 1980

IN ABOVE SPACE DESCRIBE PROPOSED PROGRAM: If proposal is to deepen or plug back, give data on present productive zone and propose new productive zone. If proposal is to drill or deepen directionally, give pertinent data on subsurface locations and measured and true vertical depths. Give shut-in or preventer program, if any.

## 24.

SIGNED

John E. Wey

TITLE Division Oper. Engineer

DATE July 23 1980

(This space for Federal or State office use)

PERMIT NO.

APPROVAL DATE

APPROVED BY

TITLE

DATE

CONDITIONS OF APPROVAL, IF ANY:

al 3rd

11/12/80

RECEIVED  
SEP 10 1980  
OIL & GAS DIST. 3 COM.  
U. S. GEOLOGICAL SURVEY  
FARMINGTON, N. M.

NEW MEXICO OIL CONSERVATION COMMISSION  
DECLARATION AND ACREAGE DEDICATION AT

Form C-102  
Supersedes C-128  
Effective 1-1-65

All distances must be from the outer boundaries of the Section.

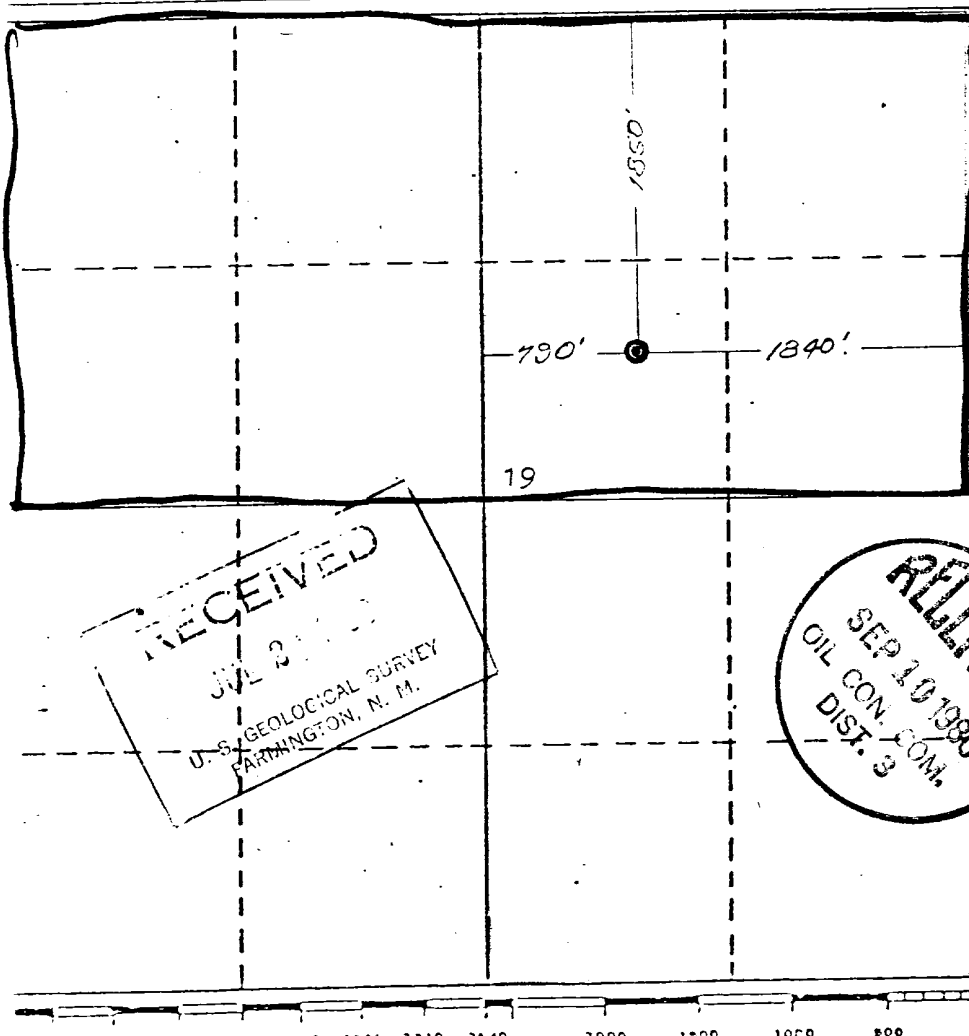
Owner <b>CONSOLIDATED OIL &amp; GAS, INC.</b>			Lease <b>LADD</b>		Well No. <b>1 - E</b>
Section Letter <b>3</b>	Section <b>19</b>	Township <b>25 NORTH</b>	Range <b>9 WEST</b>	County <b>SAN JUAN</b>	
Well Footage Location of Well: 1850 feet from the NORTH line and 1840 feet from the EAST line					
Well Level Elev. <b>6747</b>	Producing Formation <b>Dakota</b>	Pool <b>Basin Dakota</b>	Dedicated Acreage: <b>N 320.80</b> Acres		

1. Outline the acreage dedicated to the subject well by colored pencil or hachure marks on the plat below.
2. If more than one lease is dedicated to the well, outline each and identify the ownership thereof (both as to working interest and royalty).
3. If more than one lease of different ownership is dedicated to the well, have the interests of all owners been consolidated by communitization, unitization, force-pooling, etc?

☐ Yes ☐ No If answer is "yes," type of consolidation \_\_\_\_\_

If answer is "no," list the owners and tract descriptions which have actually been consolidated. (Use reverse side of this form if necessary.) \_\_\_\_\_

No allowable will be assigned to the well until all interests have been consolidated (by communitization, unitization, forced-pooling, or otherwise) or until a non-standard unit, eliminating such interests, has been approved by the Commission.



CERTIFICATION

I hereby certify that the information contained herein is true and complete to the best of my knowledge and belief.

Name  
**John E. Wey**  
Position  
**Division Operations Engineer**  
Company  
**Consolidated Oil & Gas, Inc.**  
Date  
**July 23, 1980**

I hereby certify that the location shown on this plat was determined from actual surveys made by me or under my supervision, and that the same are true and correct to the best of my knowledge and belief.

Date Surveyed  
**June 11, 1980**  
Registered Professional Engineer and/or Land Surveyor  
**James P. Leese**

Certificate No.  
**- 1463**

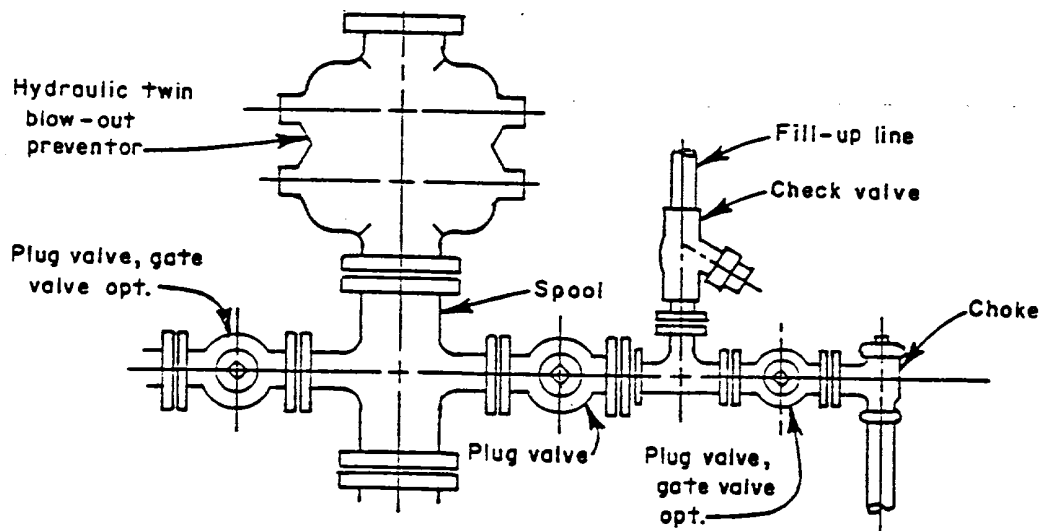
DIAGRAM "A"  
U.S.G.S. APPLICATION FOR PERMIT  
TO DRILL

CONSOLIDATED OIL & GAS, INC - OPERATOR

LADD No. 1-E

NE/4, Sec. 19, T25N, R9W  
San Juan County, New Mexico  
NM 031480 013480

PRESSURE CONTROL EQUIPMENT



DEVELOPMENT PLAN FOR SURFACE USE

Consolidated Oil & Gas, Inc. - Operator

LADD No. 1-E

1850' FNL, 1840' FEL, "G"  
Sec. 19, T25N, R9W  
San Juan County, New Mexico  
NM031480 013480

1. Existing Roads

See enclosed topographic map (Attachment "A") which shows existing improved and unimproved roads.

2. Planned Access Roads

Access to the location will be from the west on a road approximately 1800' long x 20' wide. (Attachment "A")

3. Location of Existing Wells

See enclosed lease map (Attachment "B")

4. Location of Existing and/or Proposed Facilities

See enclosed lease map (Attachment "B") showing location of wells and facilities operated by Consolidated Oil & Gas, Inc. If production is encountered, the tank battery and other required producing equipment will be located per attached completion plat (Attachment "C").

5. Location and Type of Water Supply

Water for drilling will be trucked from an irrigation canal in Aztec, New Mexico or purchased locally and transported via irrigation pipe if water is available.

6. Source of Construction Materials

No additional construction material will be required.

7. Methods of Handling Waste Disposal

All waste material will be contained by earthen and steel pits. Earthen pits will be subsequently backfilled and buried. A portable chemical toilet will be furnished for drilling personnel.

8. Ancillary Facilities

No separate drill campsites are proposed.

9. Wellsite Layout

The drilling site location will be graded and will approximate 200' x 250' with natural drainage to the west. Care will be taken while grading to control erosion (Attachment "D").

10. Plans for Restoration of Surface

- A. Following drilling and completion operations, all equipment and material not needed for operations will be removed. Pits containing fluid will be fenced until filled with any additional pits filled and the location cleaned of all trash and junk.
- B. After abandonment, any special rehabilitation and/or revegetation requirements (reseed with seed mixture No. 2) will be complied with and accomplished as expeditiously as possible. All pits should be filled and leveled within 90 days after abandonment.

11. Other Information

The location is on a gently rolling plain area, with sandy clay topsoil and vegetation consisting of sagebrush, broom snakeweed, squirreltail and blue gamma. No residences or structures are nearby. The surface rights are owned by Bureau of Land Management. If, during operations, any historic or prehistoric ruin, monument or site, or any object of antiquity is discovered, work will be suspended and the discovery will be reported to the appropriate regulatory agency.

An Archeological Clearance Survey was conducted by the Cultural Resources Management, San Juan Campus, New Mexico State University on June 19, 1980, and clearance recommended. Copies of this report have been submitted to the U. S. Geological Survey office, Farmington, New Mexico.

12. Operator's Representative

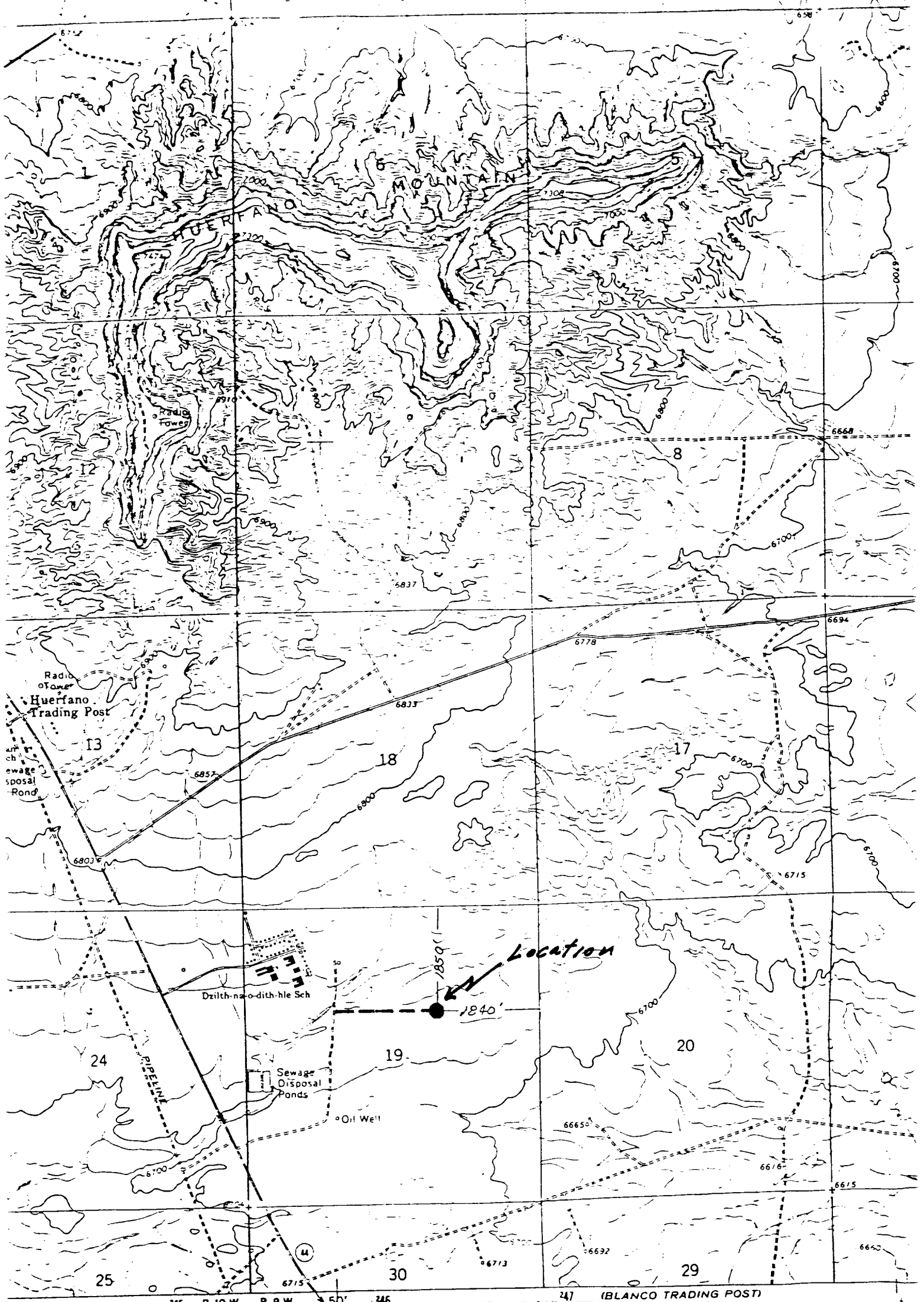
Consolidated Oil & Gas, Inc.  
John E. Wey  
Division Operations Engineer  
1860 Lincoln Street, Suite 1300  
Denver, Colorado 80295  
Phone (303) 861-5252

13. Certification

I hereby certify that I, or persons under my direct supervision, have inspected the proposed drillsite and access route; that I am familiar with the conditions which presently exist; that the statements made in this plan are, to the best of my knowledge, true and correct; and that the work associated with the operations proposed herein will be performed by Consolidated Oil & Gas, Inc. and its contractors and sub-contractors in conformity with this plan and the terms and conditions under which it is approved.

7/23/80  
Date

John E. Wey  
John E. Wey  
Division Operations Engineer



Consolidated Oil & Gas, Inc.  
NE 1/4 Sec 19, T25N, R9W, N.M.P.M.  
San Juan County, New Mexico

SCALE 1:24000

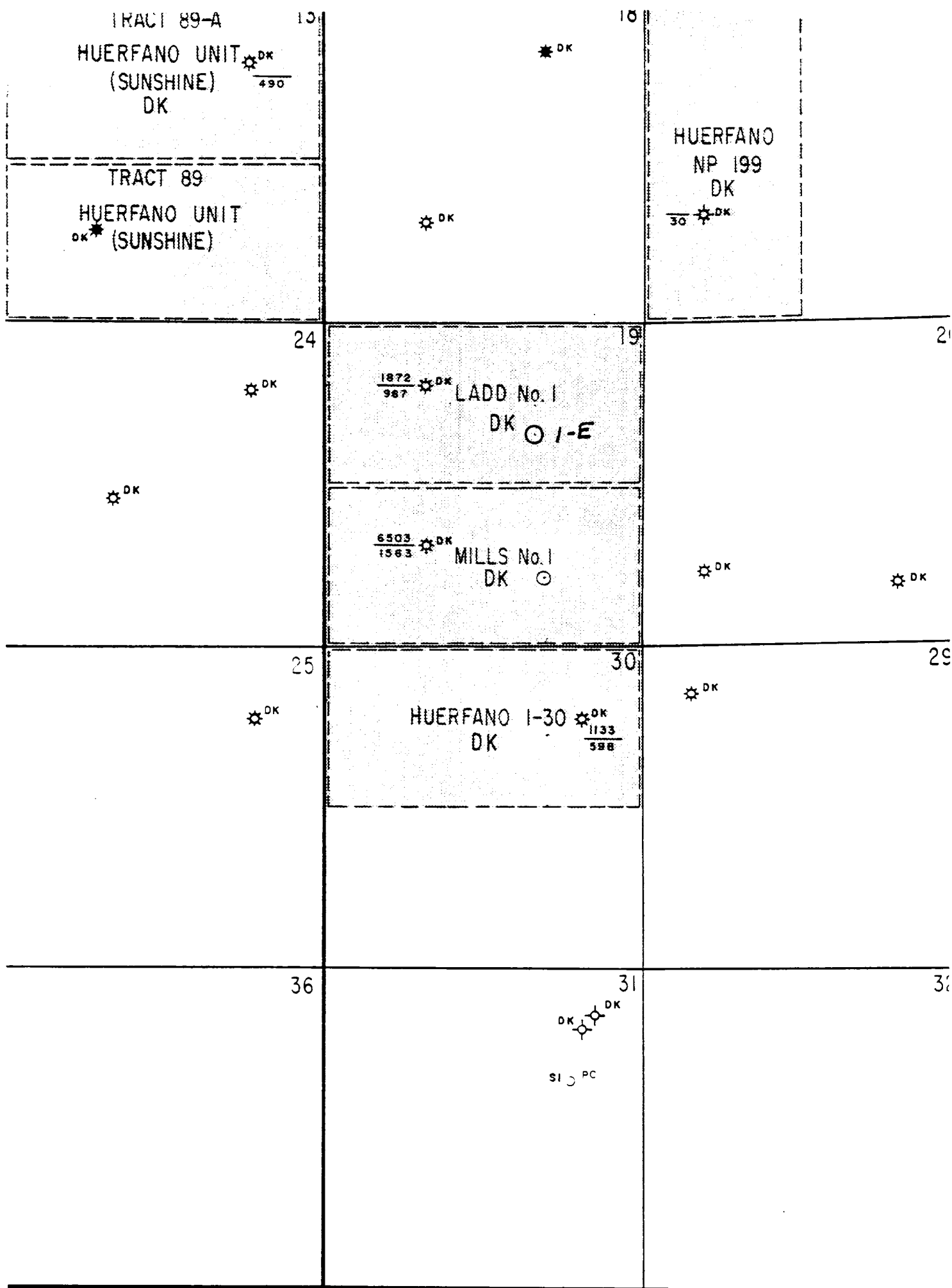
LADD No. 1-E

NM031480 013480

CONTOUR INTERVAL 20 FEET  
DATUM IS MEAN SEA LEVEL

ATTACHMENT "A"

Existing and Proposed Access Road to Location



ATTACHMENT "B"

Consolidated Oil & Gas, Inc.

LADD No. 1-E

NE/4 Sec. 19, T25N, R9W, NMPM  
San Juan County, New Mexico

Location of Wells and Facilities

NM031480 D13480



ATTACHMENT "C"

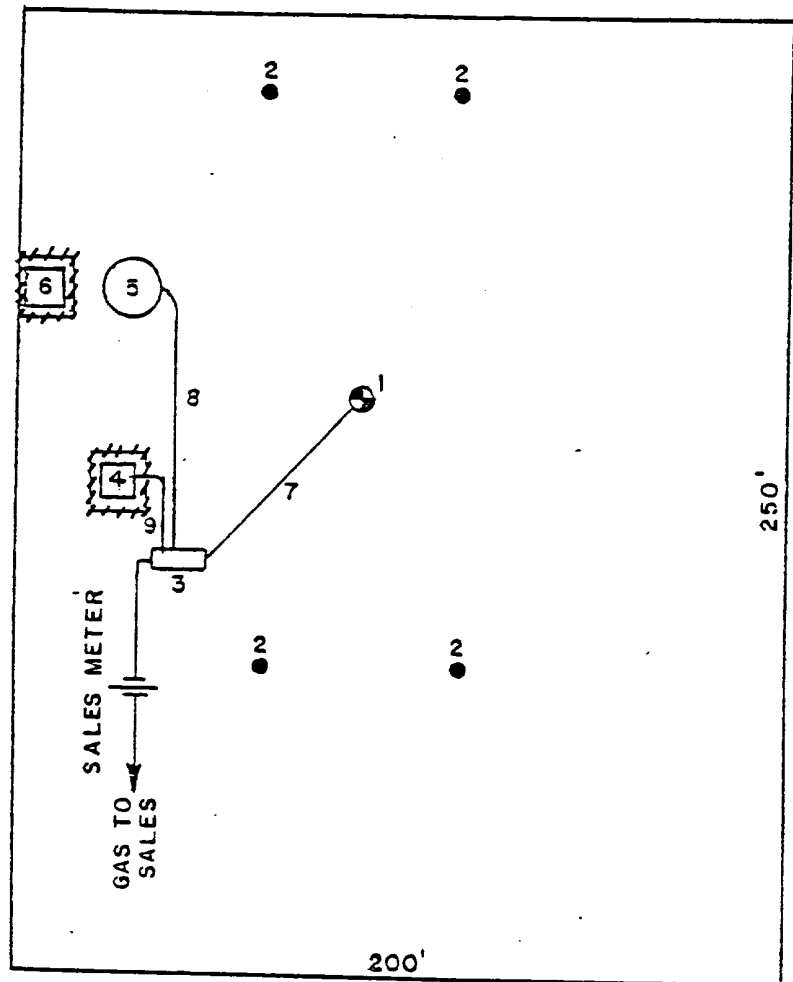
DEVELOPMENT PLAN FOR SURFACE USE

CONSOLIDATED OIL & GAS, INC. - OPERATOR

LADD No. 1-E

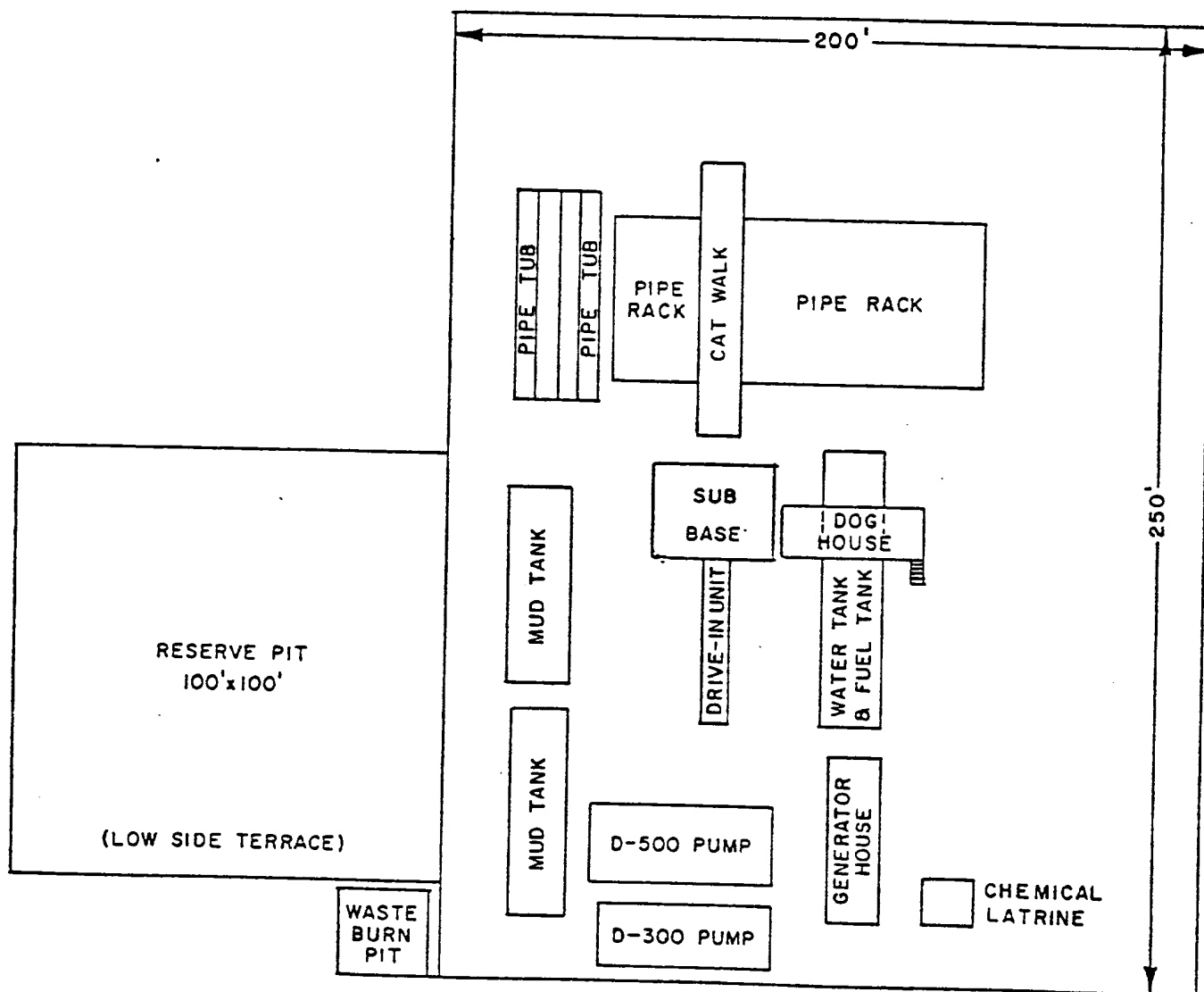
NE/4, Sec. 19, T25N, R9W  
San Juan County, New Mexico  
NM031480 613480

1. Well
2. Dead Men
3. Prod. Unit
4. Water Pit
5. 300 bbl. Oil Tank
6. Water Pit
7. 2" Buried flow line
8. 1½" Oil Line
9. 1½" Water Line



1" equals 50'

Fence - - - - -



ATTACHMENT "D"

DEVELOPMENT PLAN FOR SURFACE USE

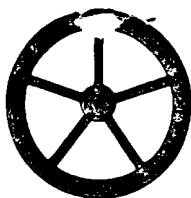
CONSOLIDATED OIL & GAS, INC. - OPERATOR

LADD No. 1-E

NE/4, Sec. 19, T25N, R9W  
San Juan County, New Mexico

PROPOSED DRILL RIG LAYOUT

NM031480 013480



# Consolidated Oil & Gas, Inc.

LINCOLN TOWER BUILDING  
1860 LINCOLN STREET  
DENVER, COLORADO 80295  
(303) 861-5252

July 23, 1980

U. S. Geological Survey  
P. O. Box 959  
Farmington, New Mexico 87401

Re: Application for Permit to Drill  
Ladd No. 1-E  
San Juan County, New Mexico  
NM ~~031480~~ 013480

Gentlemen:

Following is the information requested in NTL-6 to accompany the permit to drill:

1. Location: 1850' FNL, 1840' FEL, "G", Sec. 19, T25N, R9W  
San Juan County, New Mexico
2. Elevation of Unprepared Ground: 6747
3. Geologic Name of Surface Formation: Nacimiento
4. Type of Drilling Tools: Rotary
5. Proposed Drilling Depth: 6720'
6. Estimated Geologic Markers:
7. Anticipated Gas & Oil

Ojo Alamo (Base)	1295'
Pictured Cliffs	1960'
Cliff House	3230'
Pt. Lookout	4385'
Greenhorn	6365'
Dakota	6515'

U. S. GEOLOGICAL SURVEY  
FARMINGTON, N. M.

8. Casing Program and Setting Depth:

	<u>Size</u>	<u>Weight</u>	<u>Grade</u>	<u>Condition</u>	<u>Setting Depth</u>
Surface	8-5/8"	24.0#	K-55	New	250'
Production	5-1/2"	15.5#	K-55	New	6720'

9. Casing Setting Depth and Cementing:

Surface casing will be set at 250'. Cement will be circulated to surface with approximately 200 sx. Class "B" neat cement containing 2%  $\text{CaCl}_2$ .

Cementing Prognosis:

Production casing will be run to total depth. One stage collar will be run in the casing string at approximately 1350'. The casing will be cemented in two stages as follows:

1st Stage: 60 sx. 65/35 Pozmix with 12% gel, tailed in with 160 sx. 50/50 Pozmix with 4% gel and 0.5% FLA

2nd Stage: 240 sx. 65/35 Pozmix with 12% gel, tailed in with 50 sx. 50/50 Pozmix with 2% gel and 0.4% FLA

Note: Exact volume of cement to be determined after running Caliper log.

10. Pressure Control Equipment: See attached Diagram "A"

11. Circulating Media: 0-250' fresh water spud mud; 250'-TD fresh water, low solid mud with following properties:

Viscosity 32-28 sec., water loss 20-6 cc, weight 8.5-9.0 ppg with heavier weights if required by well conditions.

12. Testing Logging and Coring Programs:

- a. Open hole logs will be run prior to running production casing.
- b. Coring is not planned

13. Abnormal Pressure or Temperature and Hydrogen Sulfide Gas:

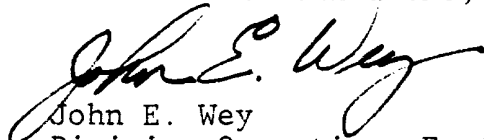
We do not anticipate abnormal pressure, temperature or hydrogen sulfide gas; however, a remote control blowout preventer as shown on attached Diagram "A" will be installed.

14. Anticipated Starting Date: Drilling operations should start within 60 days after approval.

15. Other Facets of the Proposed Operations: None

Yours very truly,

CONSOLIDATED OIL & GAS, INC.



John E. Wey  
Division Operations Engineer

JEW:lt  
Enclosures