

UNITED STATES
DEPARTMENT OF THE INTERIOR
GEOLOGICAL SURVEY

APPLICATION FOR PERMIT TO DRILL, DEEPEN, OR PLUG BACK

1a. TYPE OF WORK

DRILL ☒DEEPEN ☐PLUG BACK ☐

b. TYPE OF WELL

OIL
WELL ☐GAS
WELL ☒

OTHER

SINGLE
ZONE ☒MULTIPLE
ZONE ☐

2. NAME OF OPERATOR

El Paso Natural Gas Company

3. ADDRESS OF OPERATOR

PO Box 289, Farmington, NM 87401

4. LOCATION OF WELL (Report location clearly and in accordance with any State requirements.)*

At surface

1790'N, 1650'E

At proposed prod. zone

same

14. DISTANCE IN MILES AND DIRECTION FROM NEAREST TOWN OR POST OFFICE*

5 miles north of Huerfano, NM

15. DISTANCE FROM PROPOSED*

LOCATION TO NEAREST

PROPERTY OR LEASE LINE, FT.

(Also to nearest drlg. unit line, if any)

1650'

18. DISTANCE FROM PROPOSED LOCATION*

TO NEAREST WELL, DRILLING, COMPLETED,
OR APPLIED FOR, ON THIS LEASE, FT.

2500'

16. NO. OF ACRES IN LEASE

1280 unit?

17. NO. OF ACRES ASSIGNED

4/320.00

19. PROPOSED DEPTH

6736'

20. ROTARY OR CABLE TOOLS

Rotary

21. ELEVATIONS (Show whether DF, RT, GR, etc.)

6521'GL

22. APPROX. DATE WORK WILL START*

23.

PROPOSED CASING AND CEMENTING PROGRAM

SIZE OF HOLE	SIZE OF CASING	WEIGHT PER FOOT	SETTING DEPTH	QUANTITY OF CEMENT
12 1/4"	8 5/8"	24.0#	200'	165 cu.ft. circ. to surface
7 7/8"	4 1/2"	10.5#	6500'	
7 7/8"	4 1/2"	11.6#	6736'	1502 cu.ft. 3 stages

1st stage - 384 cu.ft. to cover Gallup
2nd stage - 644 cu.ft. to cover Mesa Verde
3rd stage - 474 cu.ft. to cover Ojo Alamo

Selectively perforate and sandwater fracture the Dakota formation.

A 3000 psi WP and 6000 psi test double gate preventer equipped with blind and pipe rams will be used for blow out prevention on this well.

This gas is dedicated.

The E/2 of Section 11 is dedicated to this well.

IN ABOVE SPACE DESCRIBE PROPOSED PROGRAM: If proposal is to deepen or plug back, give data on present productive zone and proposed new productive zone. If proposal is to drill or deepen directionally, give pertinent data on subsurface locations and measured and true vertical depths. Give blowout preventer program, if any.

24.

SIGNED

TITLE

Drilling Clerk

DATE

9-8-80

(This space for Federal or State office use)

PERMIT NO.

APPROVAL DATE

APPROVED BY

CONDITIONS OF APPROVAL

TITLE

DATE

*See Instructions On Reverse Side

OIL CONSERVATION DIVISION

STATE OF NEW MEXICO

P. O. BOX 2088

Form C-107
Revised 10-1-78

OIL AND MINERALS DEPARTMENT

SANTA FE, NEW MEXICO 87501

All distances must be from the outer boundaries of the Section.

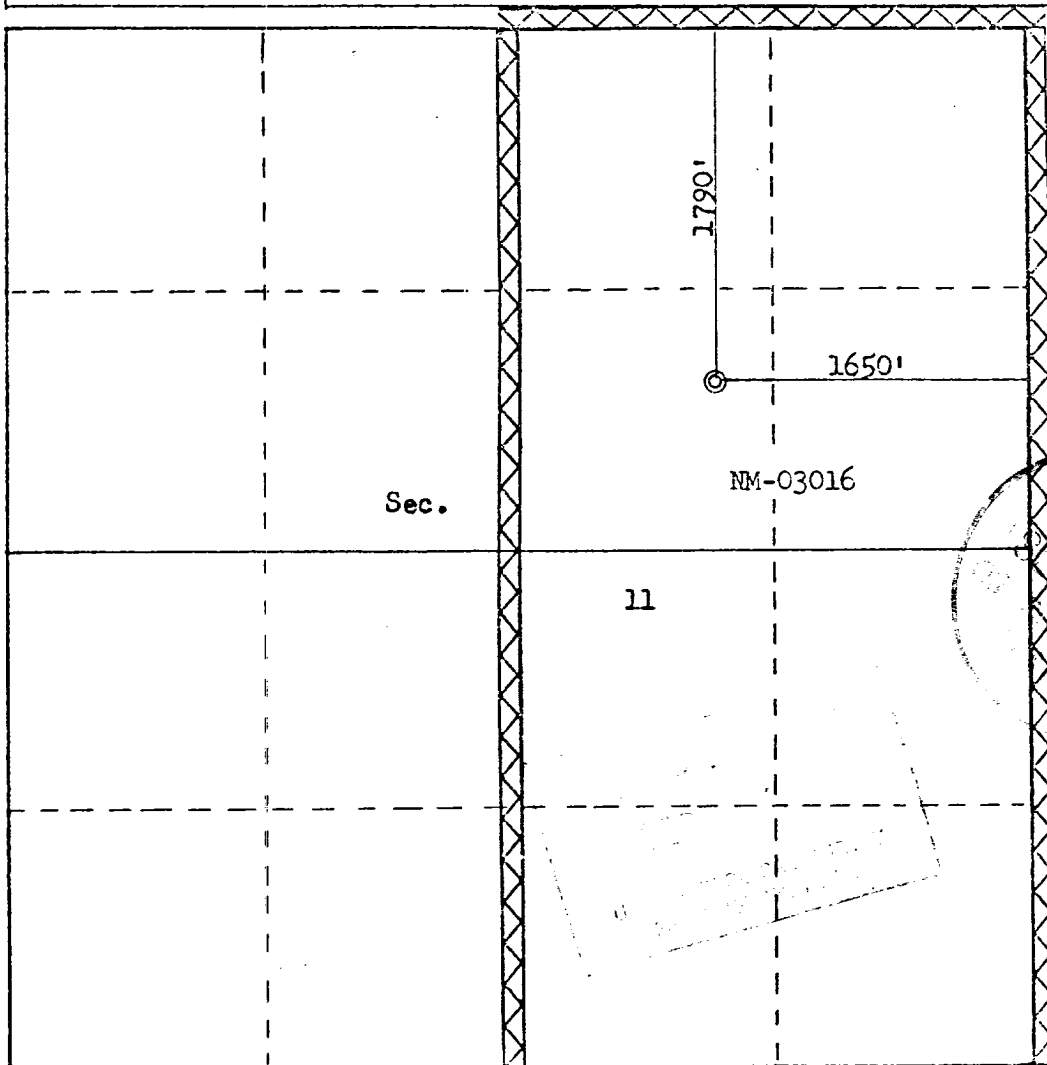
Operator EL PASO NATURAL GAS COMPANY			Lease HUERFANO UNIT (NM-03016)		Well No. 284
Unit Letter G	Section 11	Township 25N	Range 9W	County San Juan	
Actual Footage Location of Well: 1790 feet from the North line and 1650 feet from the East line					
Ground Level Elev: 6521	Producing Formation Dakota		Pool Basin Dakota		Dedicated Acreage: 320.00 Acres

1. Outline the acreage dedicated to the subject well by colored pencil or hatchure marks on the plat below.
2. If more than one lease is dedicated to the well, outline each and identify the ownership thereof (both as to working interest and royalty).
3. If more than one lease of different ownership is dedicated to the well, have the interests of all owners been consolidated by communitization, unitization, force-pooling, etc?

☒ Yes ☐ No If answer is "yes," type of consolidation Unitization

If answer is "no," list the owners and tract descriptions which have actually been consolidated. (Use reverse side of this form if necessary.) _____

No allowable will be assigned to the well until all interests have been consolidated (by communitization, unitization, forced-pooling, or otherwise) or until a non-standard unit, eliminating such interests, has been approved by the Commission.



Scale: 1"=1000'

CERTIFICATION

I hereby certify that the information contained herein is true and complete to the best of my knowledge and belief.

Name

Drilling Clerk

Position

El Paso Natural Gas Co.

Company

September 8, 1980

Date

I hereby certify that the well location shown on this plat was plotted from field notes of actual surveys made by me or under my supervision, and that the same is true and correct to the best of my knowledge and belief.

Date Surveyed

July 25, 1980

Registered Professional Engineer and Land Surveyor

Fred B. Kerr, Jr.

Certificate No.

3950

El Paso NATURAL GAS
COMPANY

P.O. BOX 1000
EL PASO, TEXAS 79901
PHONE 545-0000

Well Name Huerfano Unit #284
Location NE 11 25-9
Formation DK

We, the undersigned, have inspected this location and road.

U. S. Forest Service
Rita W. Henderson
Archaeologist

Date
7-30-80
Date

Bureau of Indian Affairs Representative
Bob Mark
Bureau of Land Management Representative

Date
7/30/80
Date

Andy Stump
U. S. Geological Survey Representative - AGREES
TO THE FOOTAGE LOCATION OF THIS WELL.

7/30/80
Date

REASON:

Seed Mixture: II

Equipment Color: Brown

Road and Row: (Same) or (Separate)


Remarks: _____

C.C. to Dave Vilvin
Earl Mealer
John Ahim

Multi-Point Surface Use Plan
Huerfano Unit #284

1. Existing Road - Please refer to Map No. 1 which shows the existing roads. New roads which will be required have been marked on this map. All existing and new roads will be properly maintained during the duration of this project.
2. Planned Access Roads - Please refer to Map No. 1. The grade of the access roads will be consistent with that of the local terrain. The road surface will not exceed twenty feet (20') in width. Upon completion of the project, the access road will be adequately drained to control soil erosion. Drainage facilities may include ditches, water bars, culverts or any other measure deemed necessary by trained Company personnel to insure proper drainage. Gates and/or cattleguards will be installed if necessary.
3. Location of Existing Wells - Please refer to Map No. 2.
4. Location of Tank Batteries, Production Facilities, and Production Gathering and Service Lines - Please refer to Maps No. 1 and No. 2. Map No. 2 shows the existing gas gathering lines. Map No. 1 shows the existing roads and new proposed access roads. All known production facilities are shown on these two maps.
5. Location and Type of Water Supply - Water for the proposed project will be obtained from Huerfano Water Well #2.
6. Source of Construction Materials - No additional materials will be required to build either the access road or the proposed location.
7. Methods of Handling Waste Materials - All garbage and trash materials will be put into a burn pit shown on the attached Location Plat No. 1. When clean-up operations are begun on the proposed project, the burn pit with its refuse will be buried to a depth of at least three feet (3'). A latrine, the location of which is also shown on Plat No. 1,

7. cont'd. will be provided for human waste. If large amounts of liquids are left in the reserve pit after completion of the project, the pit will be fenced until the liquids have had adequate time to dry. The location clean-up will not take place until such time as the reserve pit can be properly covered over to prevent run-off from carrying any of these materials into the watershed. No earthen pit will be located on natural drainages; all earthen pits will be so constructed as to prevent leakage from occurring.
8. Ancillary Facilities - No camps or airstrips will be associated with this project.
9. Wellsite Layout - Please refer to the attached Plat No. 1.
10. Plans for Restoration of the Surface - After completion of the proposed project, the location will be cleaned and leveled. The location will be left in such a condition that will enable reseeding operations to be carried out. Seed mixture as designated by the responsible government agency will be used. The reseeding operation will be performed during the time period set forth by the regulatory body. The location production equipment will be painted as designated by the responsible government agency.
11. Other Information - The terrain is sagebrush flats with sagebrush growing. Cattle, sheep and horses are seen occasionally on the proposed project site.
12. Operator's Representative - W.D. Dawson, PO Box 990, Farmington, NM
13. Certification - I hereby certify that I, or persons under my direct supervision, have inspected the proposed drillsite and access route; that I am familiar with the conditions which presently exist; that the statements made in this plan are, to the best of my knowledge, true and correct; and that the work associated with the operations proposed herein will be performed by El Paso Natural Gas Company and its contractors and sub-contractors in conformity with this plan and the terms and conditions under which it is approved.



D. R. Read
Project Drilling Engineer

Operations Plan
Huerfano Unit #284

I. Location: 1790'N, 1650'E, Section 11, T-25-N, R-9-W, San Juan County, NM

Field: Basin Dakota

Elevation: 6521'GL

II. Geology:

A. Formation Tops:	Surface	Nacimiento	Menefee	3654'
	Ojo Alamo	1148'	Pt. Lookout	4385'
	Kirtland	1329'	Gallup	5532'
	Fruitland	1784'	Greenhorn	6320'
	Pic. Cliffs	2032'	Graneros	6371'
	Lewis	2088'	Dakota	6500'
	Mesa Verde	3323'	Total Depth	6736'

B. Logging Program: Induction Electric and Gamma Ray Density at TD.

C. Coring: none

III. Drilling:

A. Mud Program: mud from surface to Total Depth.

IV. Materials:

A. Casing Program:	<u>Hole Size</u>	<u>Depth</u>	<u>Csg. Size</u>	<u>Wt. & Grade</u>
	12 1/4"	200'	8 5/8"	24.0# K-55
	7 7/8"	6500'	4 1/2"	10.5# K-55
	7 7/8"	6736'	4 1/2"	11.6# K-55

B. Float Equipment: 8 5/8" surface casing - cement guide shoe

4 1/2" production casing - guide shoe and self-fill insert valve. Two multiple stage cementers equipped for three stage cementing. Set tool for second stage at 4985' and tool for third stage at 2188'. Run 20 centralizers spaced as follows: one on each of the bottom 8 joints, one below each stage tool, and five above each stage tool spaced every other joint.

C. Tubing: 6736' of 2 3/8", 4.7#, J-55 tubing, common pump seating nipple and expendable check valve with drill type guide.

D. Wellhead Equipment: 8" 2000 x 8 5/8" casing head with 8" x 4 1/2" casing hanger, 8" 2000 x 6" 2000 xmas tree.

V. Cementing:

Surface casing (12 1/4" x 8 5/8") - use 140 sks. Class "B" cement with 1/4# gel-flake per sack and 3% calcium chloride (165 cu.ft. of slurry, 100% excess to circulate). WOC 12 hours. Test to 600#/30 min.

Operations Plan - Huerfano Unit #284

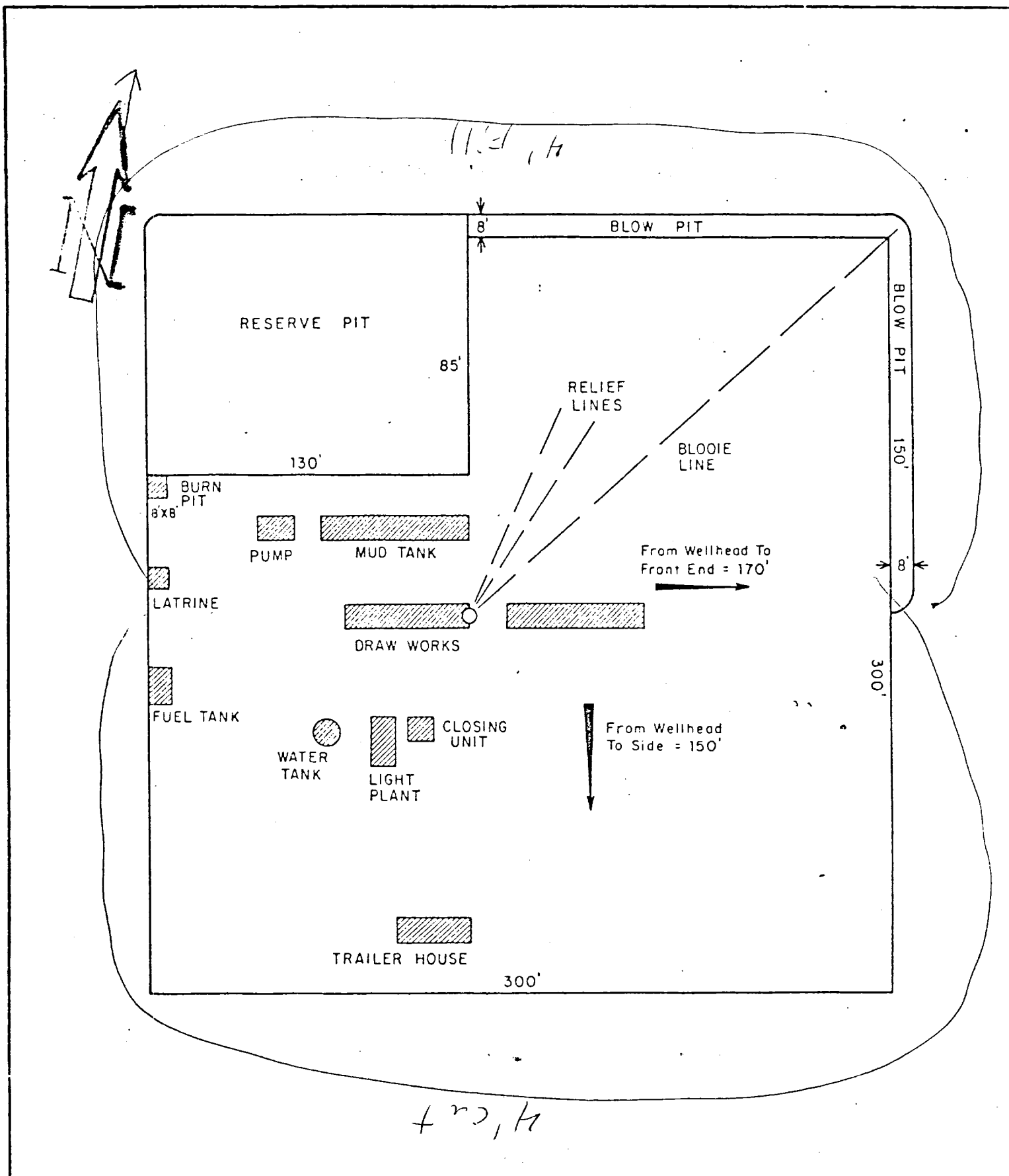
V. Cementing, cont'd.

Production casing (7 7/8" x 4 1/2")

First stage - use 159 sks. of 65/35 Class "B" Pozmix with 6% gel and 2% calcium chloride mixed with 8.3 gallons water per sack followed by 100 sks. 50/50 Class "B" Pozmix with 2% gel, 2% calcium chloride and 1/4# fine tuf-plug per cu.ft. (384 cu.ft. of slurry, 40% excess to cover the Gallup).

Second stage - circulate mud for 2.5 hours, then cement with 397 sks. of 65/35 Class "B" Pozmix with 6% gel and 2% calcium chloride and 8.3 gallons water per sack (644 cu.ft. of slurry, 70% excess to cover the Mesa Verde).

Third stage - circulate mud for 2.5 hours, then cement using 292 sks. Class "B" Pozmix with 6% gel and 2% calcium chloride mixed with 8.3 gallons water per sack (474 cu.ft. of slurry, 100% excess to fill to base of Ojo Alamo). Run temperature survey on top stage only at 8 hours. WOC 18 hours.



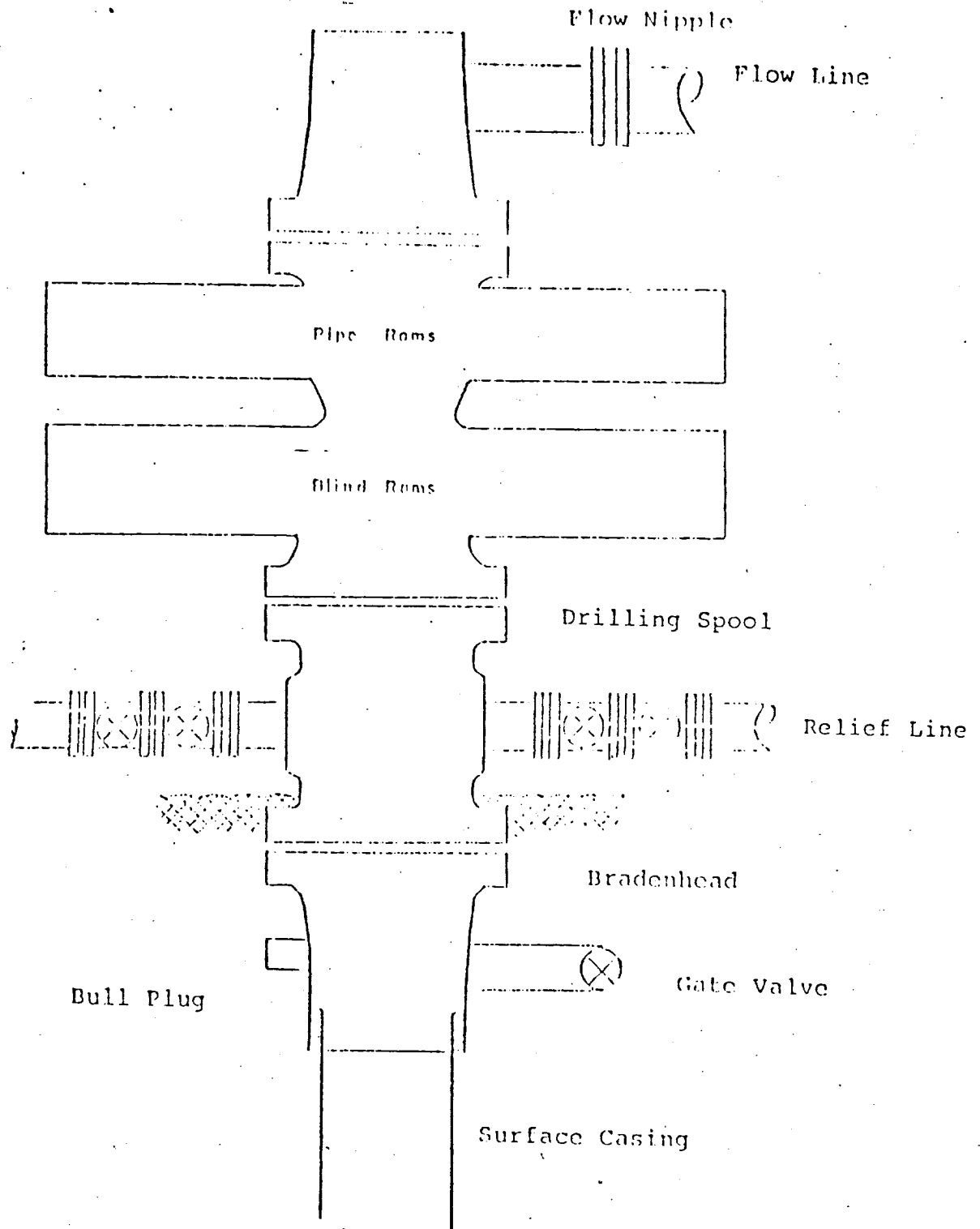
PRT.		SEP.	DATE	TO	W.O.
ENG. REC.		DATE			
DRAWN		J. L. H.	8-16-78		
CHECKED					
CHECKED					
PROJ. APP.					
DESIGN					



El Paso Natural Gas Company

TYPICAL LOCATION PLAT FOR
MESAVERDE OR DAKOTA DRILL SITE

Typical B.O.P. Installation for : Dakota : Well



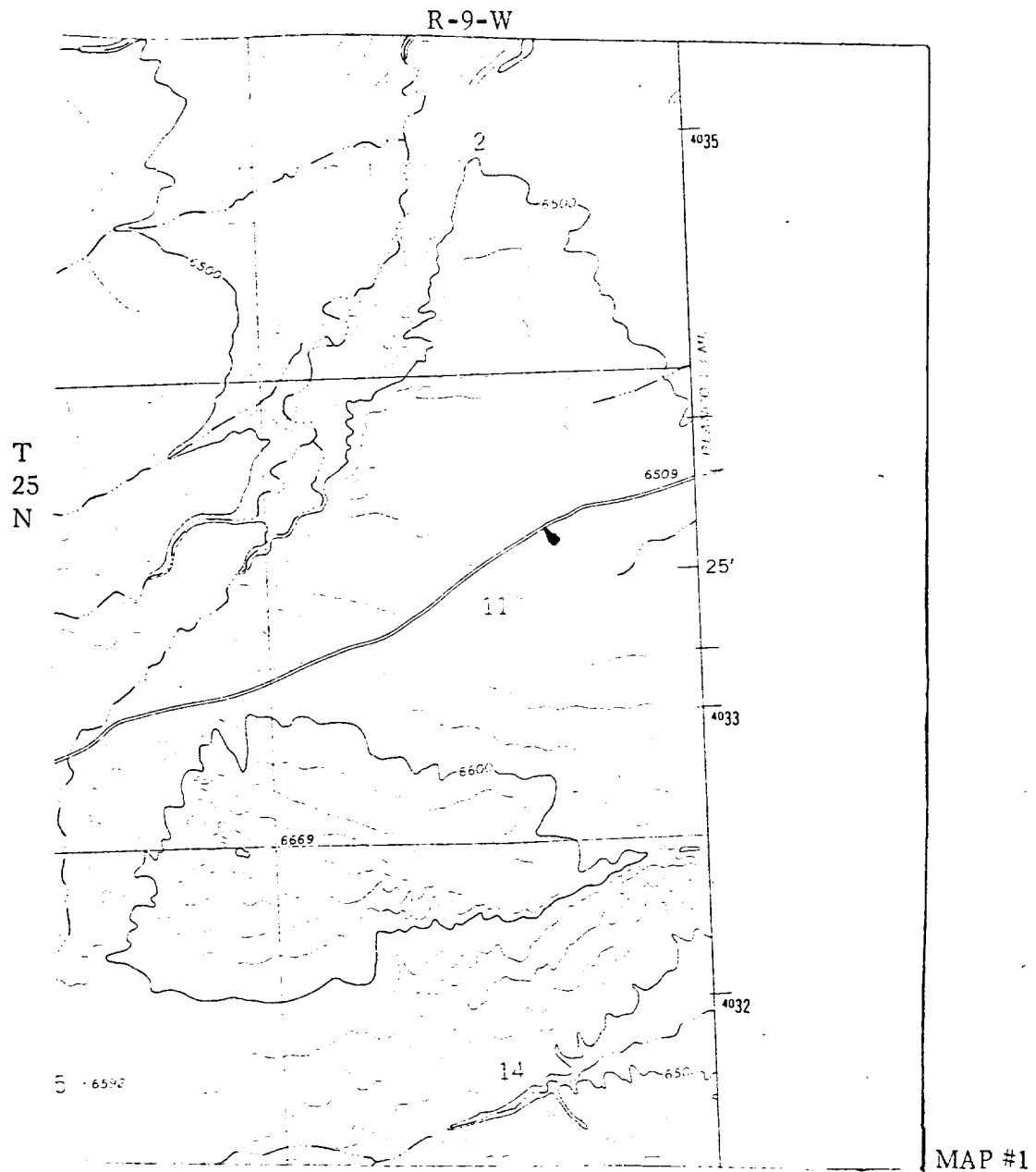
Series 900 Double Gate BOP, rated
at 3000 psi Working Pressure

When gas drilling operations begin a Shaffer type
50 or equivalent rotating head is installed on top of
the flow nipple and the flow line is converted into
a blowie line.

EL PASO NATURAL GAS COMPANY

Huerfano Unit #284

NE 11-25-9



LEGEND OF RIGHT-OF-WAYS

EXISTING ROADS

EXISTING PIPELINES

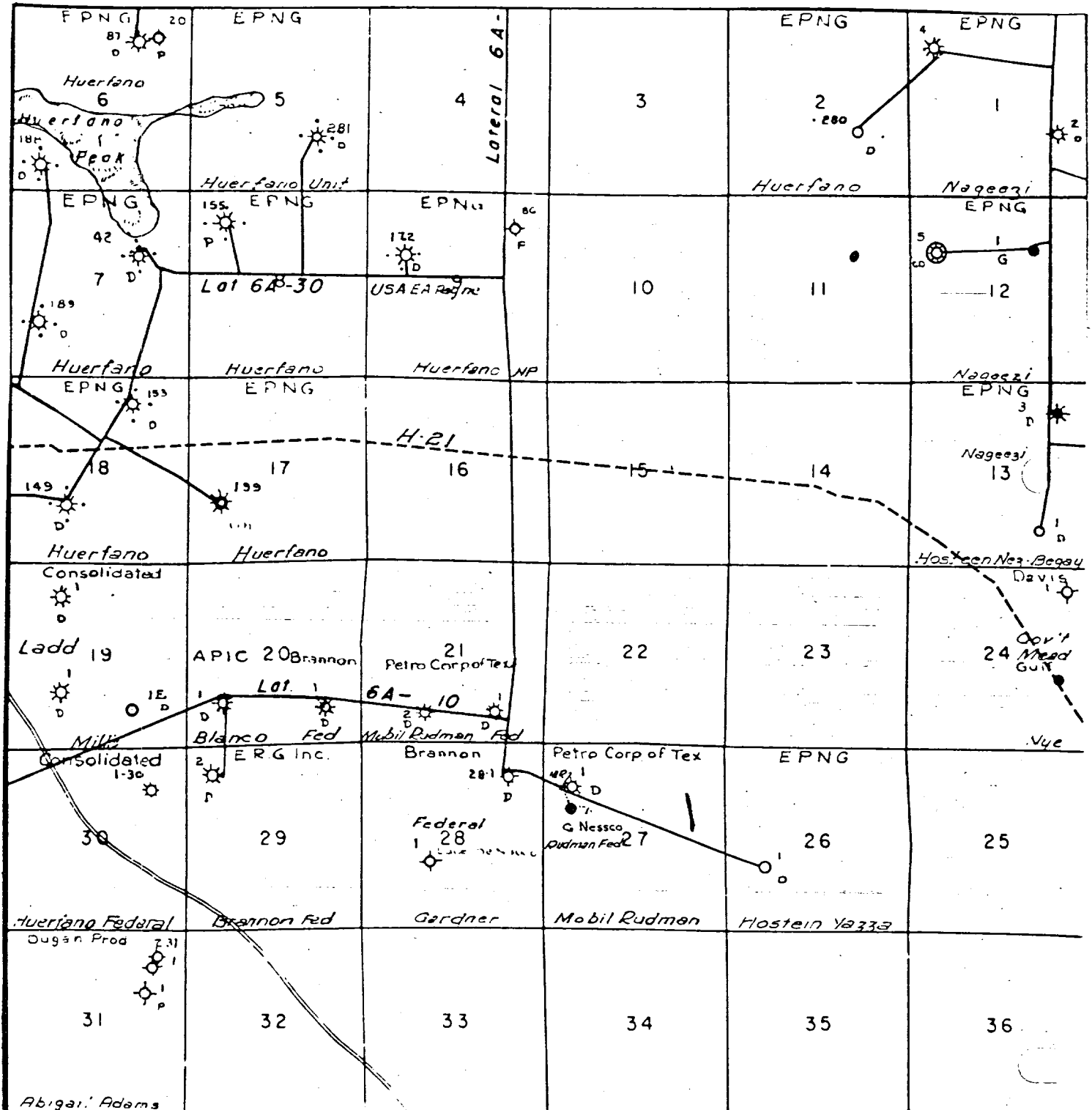
EXISTING ROAD & PIPELINE

PROPOSED ROADS

PROPOSED PIPELINES

PROPOSED ROAD & PIPELINE

EL PASO NATURAL GAS COMPANY
Huerfano Unit #284
NE 11-25-9



R-9-W

MAP #2
Proposed Location •