

UNITED STATES
DEPARTMENT OF THE INTERIOR
GEOLOGICAL SURVEY

APPLICATION FOR PERMIT TO DRILL, DEEPEN, OR PLUG BACK

1a. TYPE OF WORK

DRILL ☒DEEPEN ☐PLUG BACK ☐

b. TYPE OF WELL

OIL
WELL ☒GAS
WELL ☐

OTHER

SINGLE
ZONE ☐MULTIPLE
ZONE ☐

2. NAME OF OPERATOR

Cotton Petroleum Corporation

3. ADDRESS OF OPERATOR

717 17th Street, Suite 2200, Denver, CO 80202

4. LOCATION OF WELL (Report location clearly and in accordance with any State requirements.)*

At surface

965' FEL & 2280' FSL, Section 27

At proposed prod. zone

14. DISTANCE IN MILES AND DIRECTION FROM NEAREST TOWN OR POST OFFICE*

15. DISTANCE FROM PROPOSED*
LOCATION TO NEAREST
PROPERTY OR LEASE LINE, FT.
(Also to nearest drg. unit line, if any)

965

16. NO. OF ACRES IN LEASE

640

17. NO. OF ACRES ASSIGNED
TO THIS WELL

160 40

18. DISTANCE FROM PROPOSED LOCATION*
TO NEAREST WELL, DRILLING, COMPLETED,
OR APPLIED FOR, ON THIS LEASE, FT.

19. PROPOSED DEPTH

7155'

20. ROTARY OR CABLE TOOLS

Rotary tools

21. ELEVATIONS (Show whether DF, RT, GR, etc.)

7094' GR

22. APPROX. DATE WORK WILL START*

2-15-81

23.

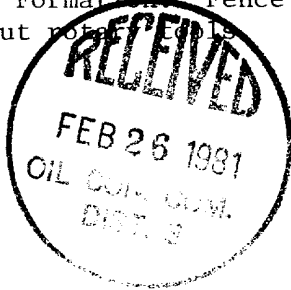
PROPOSED CASING AND CEMENTING PROGRAM

SIZE OF HOLE	SIZE OF CASING	WEIGHT PER FOOT	SETTING DEPTH	QUANTITY OF CEMENT
12 1/4"	8 5/8"	24#	500'	375 sxs
7 7/8"	4 1/2"	11.6# & 10.5#	7155'	to be determined

It is proposed to drill this well with rotary tools and drilling mud as a circulation medium through the Dakota Formation. Possible production zones in the Dakota Formation will be completed. Production casing will be cemented in such a manner as to protect the Chacra & Pictured Cliffs Formation. Fence reserve pit on 3 sides before spudding. Fence 4th side when moving out rotary tools.

ESTIMATED FORMATION TOPS

Pictured Cliffs	2445'
Mesaverde	3295'
Gallup	5925'
Dakota	6845'
TD	7155'



DRILLING OPERATIONS AUTHORIZED ARE
SUBJECT TO COMPLIANCE WITH ATTACHED
"GENERAL REQUIREMENTS"

SE 1/4 of Section 27 is dedicated to this well, 160 acres.

IN ABOVE SPACE DESCRIBE PROPOSED PROGRAM: If proposal is to deepen or plug back, give data on present productive zone and proposed new productive zone. If proposal is to drill or deepen directionally, give pertinent data on subsurface locations and measured and true vertical depths. Give blowout preventer program, if any.

24.

SIGNED

DE Wood / HGL

TITLE

Division Production Mgr.

DATE

12-2-80

(This space for Federal or State office use)

PERMIT NO.

APPROVED
AS AMENDED

APPROVAL DATE

APPROVED BY

CONDITIONS OF APPROVAL

TITLE

DATE

FEB 24 1981
JAMES F. SIMS
DISTRICT ENGINEER

NMOC

*See Instructions On Reverse Side

OIL CONSERVATION DIVISION

RECEIVED

P. O. BOX 2088

Form C-107
Revised 10-1-78

STATE OF NEW MEXICO

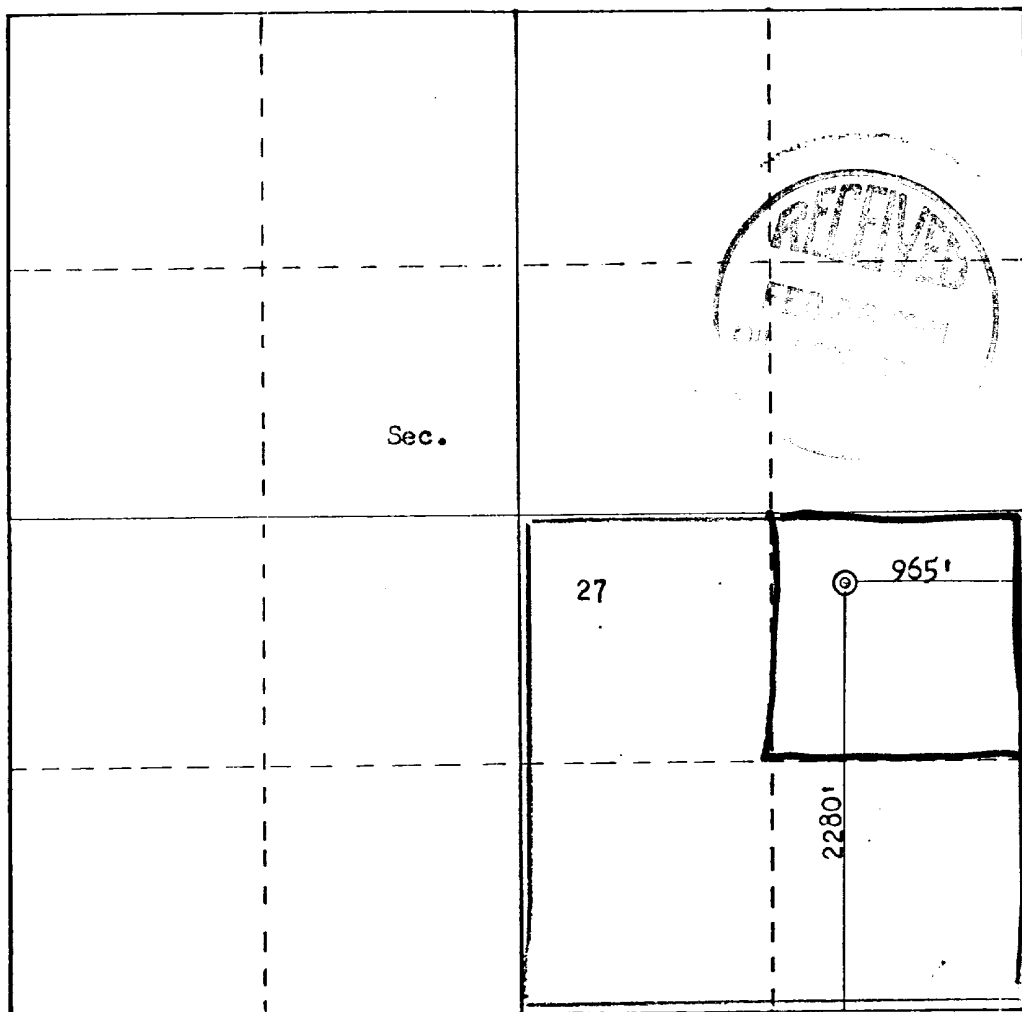
ENERGY AND MINERALS DEPARTMENT

SANTA FE, NEW MEXICO 87501

NOV 12 1980

All distances must be from the outer boundaries of the Section.

Operator COTTON PETROLEUM CORPORATION			Lease NAGEEZI-FEDERAL 27		COTTON PETROLEUM DENVER	Well No. 220
Unit Letter I	Section 27	Township 25N	Range 8W	County San Juan		
Actual Footage Location of Well: 2280 feet from the South line and 965 feet from the East line						
Ground Level Elev: 7094	Producing Formation Gallup-Dakota		Pool Dufert Point Gallup-Dakota		Dedicated Acreage: 40 100 Acres	
<p>1. Outline the acreage dedicated to the subject well by colored pencil or hachure marks on the plat below.</p> <p>2. If more than one lease is dedicated to the well, outline each and identify the ownership thereof (both as to working interest and royalty).</p> <p>3. If more than one lease of different ownership is dedicated to the well, have the interests of all owners been consolidated by communitization, unitization, force-pooling, etc?</p> <p><input type="checkbox"/> Yes <input type="checkbox"/> No If answer is "yes," type of consolidation _____</p> <p>If answer is "no," list the owners and tract descriptions which have actually been consolidated. (Use reverse side of this form if necessary.) _____</p> <p>No allowable will be assigned to the well until all interests have been consolidated (by communitization, unitization, forced-pooling, or otherwise) or until a non-standard unit, eliminating such interests, has been approved by the Commission.</p>						



Scale: 1"=1000'

CERTIFICATION

I hereby certify that the information contained herein is true and complete to the best of my knowledge and belief.

Name **DEWood / JKL**
Position **Division Production Mgr.**
Company **Cotton Petroleum Corp.**
Date **December 2, 1980**

I hereby certify that the well location shown on this plat was plotted from field notes of actual surveys made by me or under my supervision, and that the same is true and correct to the best of my knowledge and belief.

Date Surveyed **November 4, 1980**
Registered Professional Engineer and Land Surveyor
Fred A. Kerr, Jr.
Certificate No. **3950**

