

UNITED STATES
DEPARTMENT OF THE INTERIOR
GEOLOGICAL SURVEY

APPLICATION FOR PERMIT TO DRILL, DEEPEN, OR PLUG BACK

1a. TYPE OF WORK
DRILL ☒ DEEPEN ☐ PLUG BACK ☐

b. TYPE OF WELL
OIL WELL ☐ GAS WELL ☒ OTHER ☐ SINGLE ZONE ☒ MULTIPLE ZONE ☐

2. NAME OF OPERATOR
M. J. Brannon

3. ADDRESS OF OPERATOR
3417 Hulen Street, Suite 124, Ft. Worth, Texas 76107

4. LOCATION OF WELL (Report location clearly and in accordance with any State requirements.)
At surface
990' FNL, 1780' FEL
At proposed prod. zone
Same

14. DISTANCE IN MILES AND DIRECTION FROM NEAREST TOWN OR POST OFFICE*
22 miles South of Bloomfield, N.M.

15. DISTANCE FROM PROPOSED* LOCATION TO NEAREST PROPERTY OR LEASE LINE, FT. (Also to nearest drlg. unit line, if any)
1800

16. NO. OF ACRES IN LEASE
2521.02

17. NO. OF ACRES ASSIGNED TO THIS WELL
E 320

18. DISTANCE FROM PROPOSED LOCATION* TO NEAREST WELL, DRILLING, COMPLETED, OR APPLIED FOR, ON THIS LEASE, FT.
2500

19. PROPOSED DEPTH
6590

20. ROTARY OR CABLE TOOLS
Rotary

21. ELEVATIONS (Show whether DF, RT, GR, etc.)
6664 'GL,

22. APPROX. DATE WORK WILL START*
6 - 1 - 81

23. DRILLING OPERATIONS AUTHORIZED ARE
SUBJECT TO COMPLIANCE WITH ATTACHED
"GENERAL REQUIREMENTS" PROGRAM

SIZE OF HOLE	SIZE OF CASING	WEIGHT PER FOOT	SETTING DEPTH	APPROX. QUANTITY OF MATERIAL REQUIRED
12 1/4"	8 5/8	24.0	250	230 sacks
7 7/8"	4 1/2"	10.50	6590	900 sacks, 3 stage

All producing intervals in Dakota Formation will be perforated and stimulated as necessary.

EXHIBITS

- "A" Location and Elevation Plat.
"B" Ten Point Compliance Program.
"C" Blowout Preventer Diagram.
"D" Multi-Point Requirements for A.P.D.

- "E" Access Road to Location.
"F" Radius Map of Field.
"G" Drill Rig Layout.
"H" Fracturing Program Layout.
"I" Location Profile

The gas from this well is committed.

The E/2, Section 29 is dedicated to this well.

IN ABOVE SPACE DESCRIBE PROPOSED PROGRAM: If proposal is to deepen or plug back, give data on present productive zone and proposed new productive zone. If proposal is to drill or deepen directionally, give pertinent data on subsurface locations and measured and true vertical depths. Give blowout preventer program, if any.

24. FOR: M. J. Brannon
ORIGINAL SIGNED BY
SIGNED: EWELE N. WALSH, P.E. TITLE: President, Walsh Eng. & Production Corp. DATE: 4/30/81

PERMIT NO. APPROVAL DATE

APPROVED BY TITLE

CONDITIONS OF APPROVAL, IF ANY:

APPROVED
DATE
AS AMENDED

*See Instructions On Reverse Side

MAY 21 1981
JAMES F. SIMS
DISTRICT ENGINEER

All distances must be from the outer boundaries of the Section.

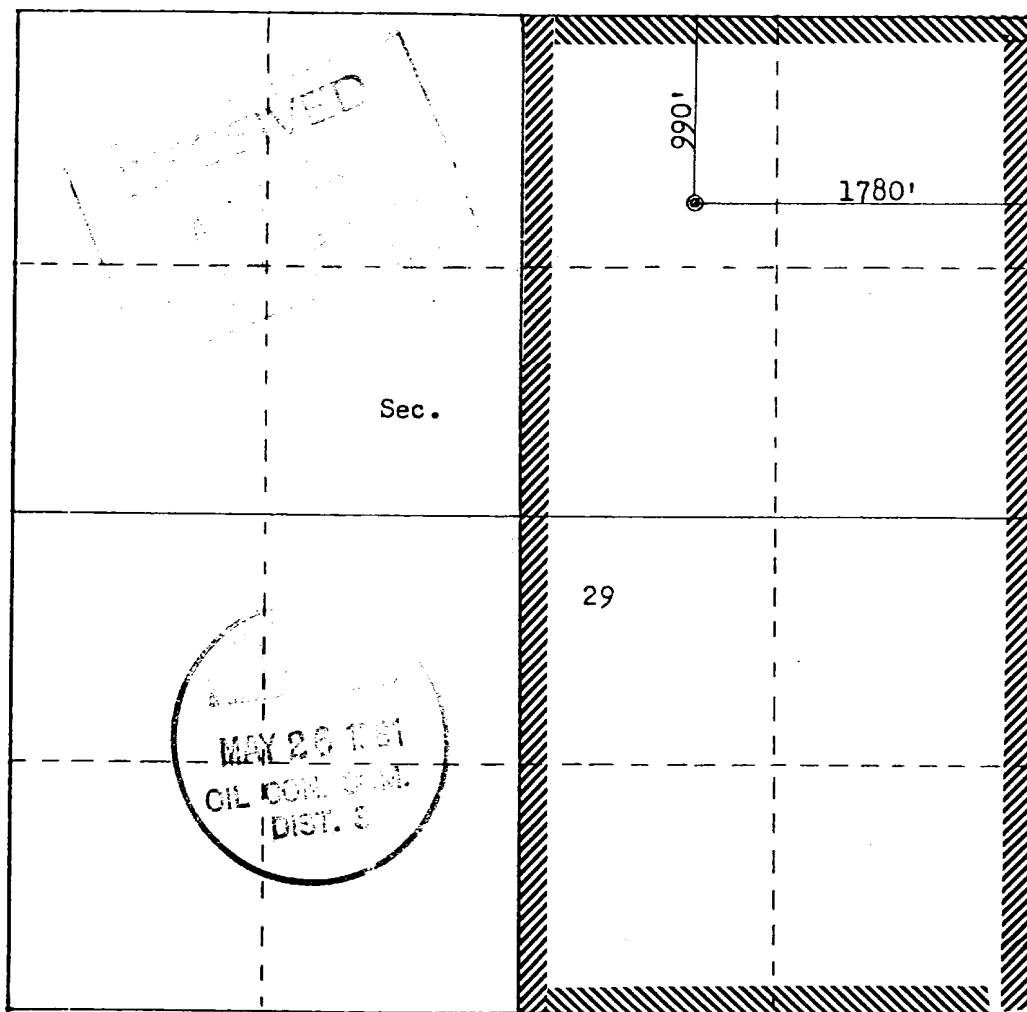
Operator M. J. BRANNON			Lease FEDERAL 29		Well No. 1
Unit Letter B	Section 29	Township 25N	Range 9W	County San Juan	
Actual Footage Location of Well: 990 feet from the North line and 1780 feet from the East line					
Ground Level Elev. 6664	Producing Formation Dakota	Pool Basin Dakota		Dedicated Acreage: 320 Acres	

1. Outline the acreage dedicated to the subject well by colored pencil or hatchure marks on the plat below.
2. If more than one lease is dedicated to the well, outline each and identify the ownership thereof (both as to working interest and royalty).
3. If more than one lease of different ownership is dedicated to the well, have the interests of all owners been consolidated by communitization, unitization, force-pooling, etc?

☐ Yes ☐ No If answer is "yes," type of consolidation _____

If answer is "no," list the owners and tract descriptions which have actually been consolidated. (Use reverse side of this form if necessary.) _____

No allowable will be assigned to the well until all interests have been consolidated (by communitization, unitization, forced-pooling, or otherwise) or until a non-standard unit, eliminating such interests, has been approved by the Commission.



Scale: 1"=1000'

CERTIFICATION	
I hereby certify that the information contained herein is true and complete to the best of my knowledge and belief.	
FOR: M. J. BRANNON	
ORIGINAL SIGNED BY EWELL N. WALSH	
Name	Ewell N. Walsh, P.E.
Position	President
Company	Walsh Engineering & Production Corporation
Date	April 30, 1981
I hereby certify that the well location shown on this plat was plotted from field notes of actual surveys made by me or under my supervision, and that the same is true and correct to the best of my knowledge and belief.	
Date Surveyed	April 27, 1981
Registered Professional Engineer and Land Surveyor	
Fred E. Kert	
Certificate No. 3959	

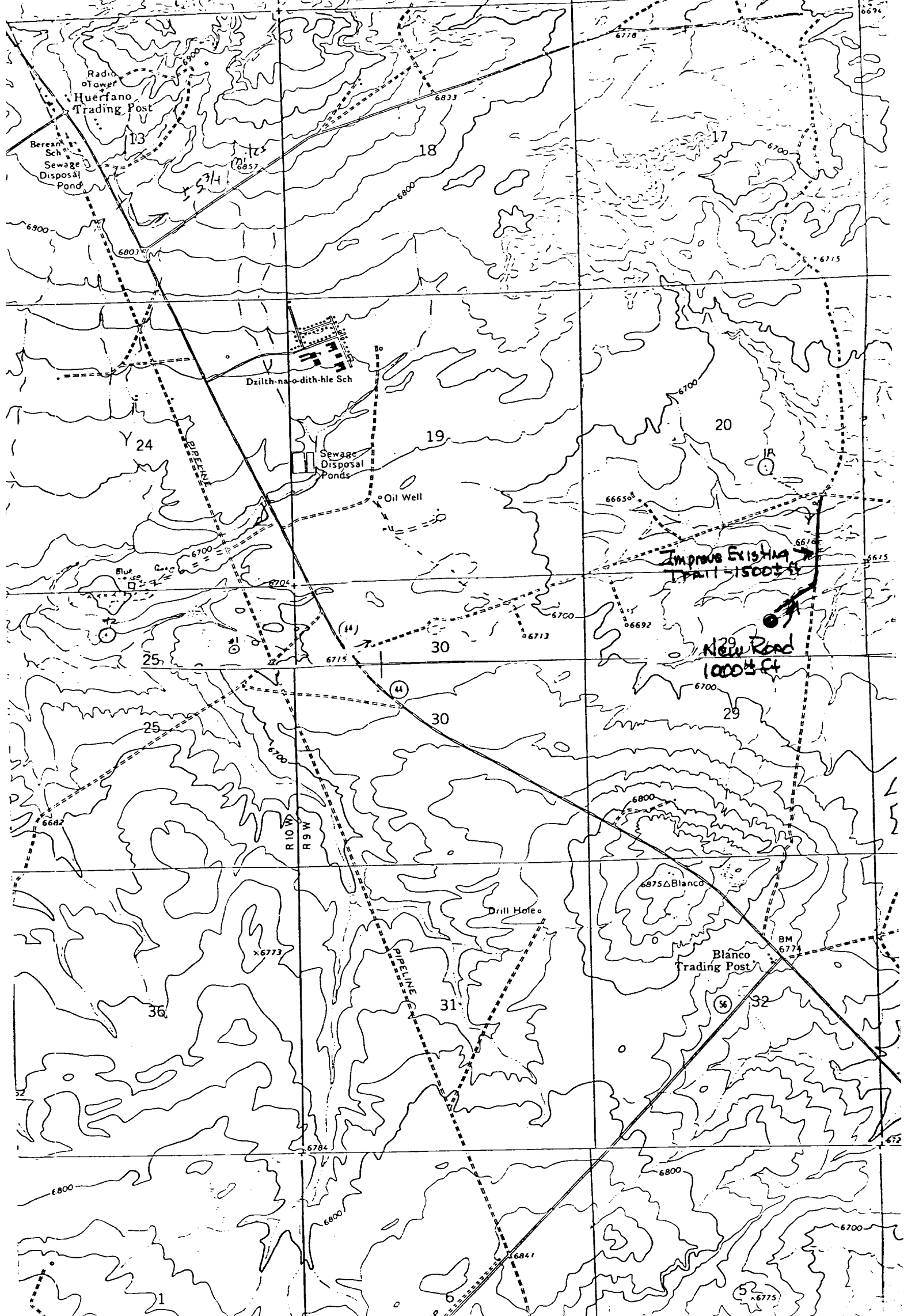


EXHIBIT "E"
Vicinity Map for
M. J. BRANNON #1 FEDERAL 29
990'FNL 1780'FEL Sec. 29-T25N-R9W
SAN JUAN COUNTY, NEW MEXICO