

UNITED STATES  
DEPARTMENT OF THE INTERIOR  
GEOLOGICAL SURVEY

## APPLICATION FOR PERMIT TO DRILL, DEEPEN, OR PLUG BACK

## 1a. TYPE OF WORK

DRILL ☒DEEPEN ☐PLUG BACK ☐

## b. TYPE OF WELL

OIL  
WELL ☐GAS  
WELL ☒

OTHER

SINGLE  
ZONE ☐MULTIPLE  
ZONE ☐

## 2. NAME OF OPERATOR

Hixon Development Company

## 3. ADDRESS OF OPERATOR

P.O. Box 2810, Farmington, New Mexico 87401

## 4. LOCATION OF WELL (Report location clearly and in accordance with any State requirements.)\*

At surface

1800' FNL, 790' FEL, Section 6, T25N, R12W

At proposed prod. zone

## 14. DISTANCE IN MILES AND DIRECTION FROM NEAREST TOWN OR POST OFFICE\*

25 miles south of Farmington

## 15. DISTANCE FROM PROPOSED\*

LOCATION TO NEAREST  
PROPERTY OR LEASE LINE, FT.  
(Also to nearest drlg. unit line, if any)

## 18. DISTANCE FROM PROPOSED LOCATION\*

TO NEAREST WELL, DRILLING, COMPLETED,  
OR APPLIED FOR, ON THIS LEASE, FT.

## 16. NO. OF ACRES IN LEASE

1673

## 19. PROPOSED DEPTH

870'

17. NO. OF ACRES ASSIGNED  
TO THIS WELL

160

## 20. ROTARY OR CABLE TOOLS

Rotary

## 21. ELEVATIONS (Show whether DF, RT, GR, etc.)

6202' GLE

## 22. APPROX. DATE WORK WILL START\*

1/2/81

## 23. PROPOSED CASING AND CEMENTING PROGRAM

SIZE OF HOLE	SIZE OF CASING	WEIGHT PER FOOT	SETTING DEPTH	QUANTITY OF CEMENT
9-3/4	7"	20#	40' 10'	Circulate to surface
5"	2-7/8"	6.5#	870'	100 sx circulate to surface

It is proposed to drill a 5" slimhole to develop the Farmington Sand formation. The hole will be drilled with a portable rotary rig using mud. An annular type BOP will be used per the attached schematic. The well will be evaluated with open hole logs prior setting casing. Gas from this well is not dedicated.



IN ABOVE SPACE DESCRIBE PROPOSED PROGRAM: If proposal is to deepen or plug back, give data on present productive zone and proposed new productive zone. If proposal is to drill or deepen directionally, give pertinent data on subsurface locations and measured and true vertical depths. Give blowout preventer program, if any.

24. SIGNED Cecil H. Kuehner TITLE Petroleum EngineerDATE 11/19/81

(This space for Federal or State office use)

PERMIT NO. \_\_\_\_\_

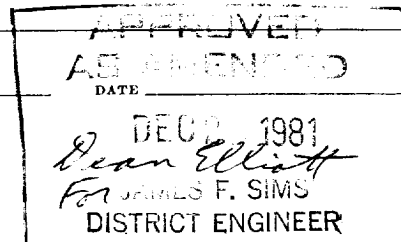
APPROVAL DATE \_\_\_\_\_

APPROVED BY \_\_\_\_\_

TITLE \_\_\_\_\_

CONDITIONS OF APPROVAL, IF ANY:

JAE



## OIL CONSERVATION DIVISION

F. O. BOX 2018

Form O-101  
Revised 10-79STATE OF NEW MEXICO  
ENERGY AND MINERALS DEPARTMENT

SANTA FE, NEW MEXICO 87501

All distances must be from the outer boundaries of the section

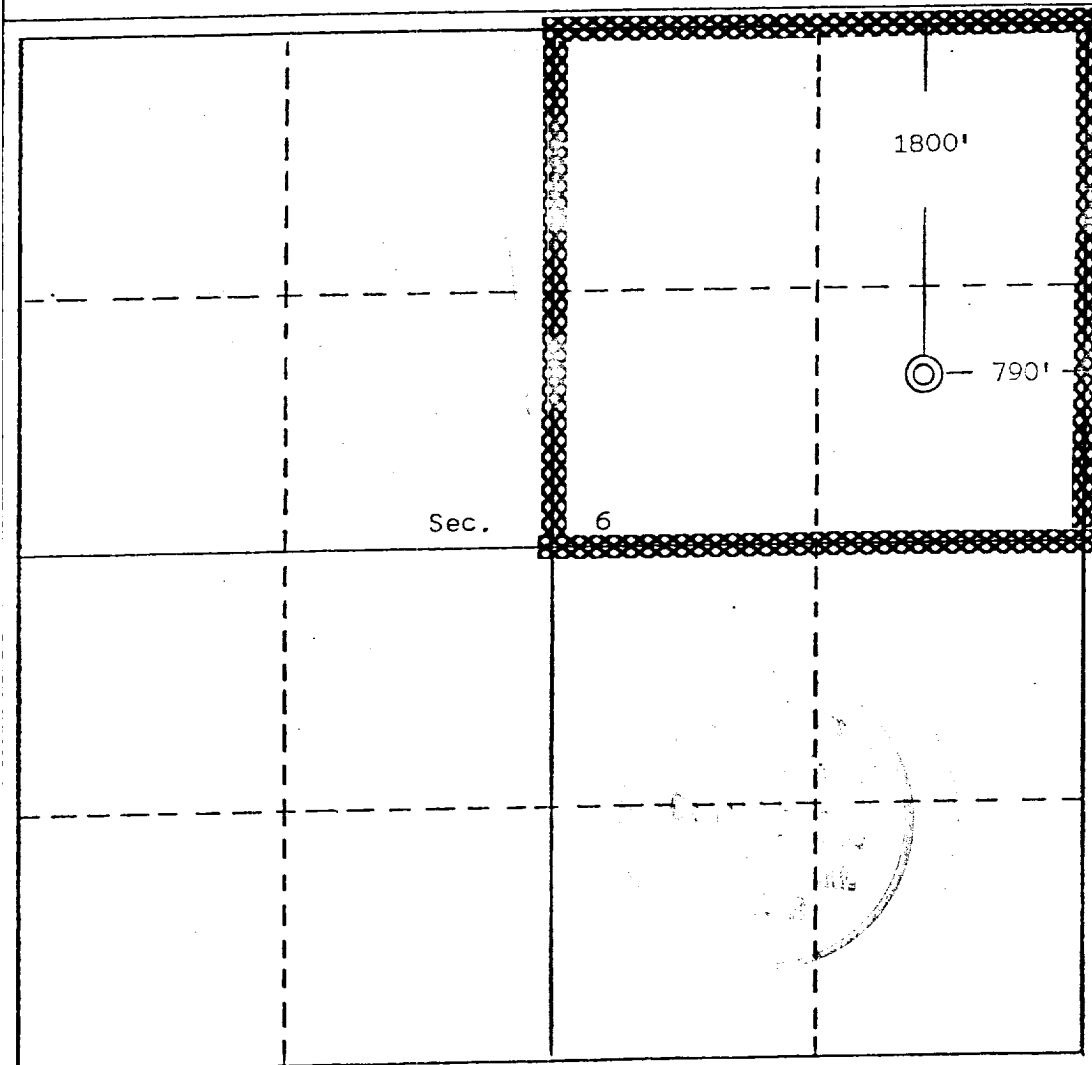
Company Hixon Development Company			Lease Federal O		Well No. 17
Unit Letter H	Section 6	Township 25 North	Range 12 West	County San Juan	
Actual Footage Location of Well: 1800 feet from the North line and 790 feet from the East line					
Ground Level Elev. 6190	Producing Formation Farmington Sand	Pool Bisti Farmington		Dedicated Acreage: 160 Acres	

1. Outline the acreage dedicated to the subject well by colored pencil or hatchure marks on the plat below.
2. If more than one lease is dedicated to the well, outline each and identify the ownership thereof (both as to working interest and royalty).
3. If more than one lease of different ownership is dedicated to the well, have the interests of all owners been consolidated by communitization, unitization, force-pooling, etc?

☐ Yes ☐ No If answer is "yes," type of consolidation \_\_\_\_\_

If answer is "no," list the owners and tract descriptions which have actually been consolidated. (Use reverse side of this form if necessary.) \_\_\_\_\_

No allowable will be assigned to the well until all interests have been consolidated (by communitization, unitization, forced-pooling, or otherwise) or until a non-standard unit, eliminating such interests, has been approved by the Division.



## CERTIFICATION

I hereby certify that the information contained herein is true and complete to the best of my knowledge and belief.

Name

Aldrich L. Kuchera

Position

Executive Vice President

Company

Hixon Development Company

Date

November 11, 1981

EDGAR L. RISENHOVER  
NEW MEXICO  
5979  
I hereby certify that the well location shown on this plat was located from field notes of actual surveys made by me or under my supervision, and that the same are true and correct to the best of my knowledge and belief.

Date Surveyed

November 5, 1981

Registered Professional Engineer  
and/or Land Surveyor

Edgar L. Risenhoover  
Certificate No. 5979

Edgar L. Risenhoover, L.S.

0 330 660 990 1320 1650 1980 2310 2640 2970 3300 3630 3960 4290 4620 4950 5280 5610 5940 6270 6600

