

UNITED STATES
DEPARTMENT OF THE INTERIOR
GEOLOGICAL SURVEY30-045-28920
5. LEASE DESIGNATION AND SERIAL NO.

SF-078309

6. IF INDIAN, ALLOTTEE OR TRIBE NAME

APPLICATION FOR PERMIT TO DRILL, DEEPEN, OR PLUG BACK

1a. TYPE OF WORK

DRILL ☒DEEPEN ☐PLUG BACK ☐

b. TYPE OF WELL

OIL
WELL ☐GAS
WELL ☒

OTHER

SINGLE
ZONE ☐MULTIPLE
ZONE ☐

2. NAME OF OPERATOR

M. J. Brannon

3. ADDRESS OF OPERATOR c/o Walsh Engineering & Prod. Corp.

P. O. Drawer 419 Farmington, N.M. 87401

4. LOCATION OF WELL (Report location clearly and in accordance with any State requirements.)*

At surface

1850'FNL, 790'FWL

At proposed prod. zone

Same

7. UNIT AGREEMENT NAME

8. FARM OR LEASE NAME

Federal 28

9. WELL NO.

2

10. FIELD AND POOL, OR WILDCAT

Basin Dakota

11. SEC., T., R., M., OR BLE.
AND SURVEY OR AREA

Sec. 28-T25N-R9W

E N.M.P.M.

12. COUNTY OR PARISH

San Juan

13. STATE

N.M.

14. DISTANCE IN MILES AND DIRECTION FROM NEAREST TOWN OR POST OFFICE*

22 miles South of Bloomfield, N.M.

15. DISTANCE FROM PROPOSED*

LOCATION TO NEAREST
PROPERTY OR LEASE LINE, FT.
(Also to nearest drlg. unit line, if any)

790'

16. NO. OF ACRES IN LEASE

2521.02

17. NO. OF ACRES ASSIGNED

TO THIS WELL

W 320

18. DISTANCE FROM PROPOSED LOCATION*

TO NEAREST WELL, DRILLING, COMPLETED,
OR APPLIED FOR, ON THIS LEASE, FT.

3630'

19. PROPOSED DEPTH

6550'

20. ROTARY OR CABLE TOOLS

Rotary

21. ELEVATIONS (Show whether DF, RT, GR, etc.)

6673'G.L.

22. APPROX. DATE WORK WILL START*

July 1, 1982

23.

PROPOSED CASING AND CEMENTING PROGRAM

SIZE OF HOLE	SIZE OF CASING	WEIGHT PER FOOT	SETTING DEPTH	QUANTITY OF CEMENT
12-1/4"	8-5/8"	24.0	250'	270 Cu.Ft.
7-7/8"	4-1/2"	10.50	6590'	2040 Cu.Ft., 3 stages

All producing intervals in Dakota Formation will be perforated and stimulated as necessary.

EXHIBITS

"A" Location & Elevation Plat

"B" Ten Point Compliance Program

"C" Blowout Preventer Diagram

"D" Multi Point Requirements for APD

"E" Access Road to Location

"F" Radius Map of Field

"G" Drill Rig Layout

"H" Fracturing Program Layout

"I" Location Profile

The gas from this well is committed.

The W/2, Section 28 is dedicated to this well.

IN ABOVE SPACE DESCRIBE PROPOSED PROGRAM: If proposal is to deepen or plug back, give data on present productive zone and proposed new productive zone. If proposal is to drill or deepen directionally, give pertinent data on subsurface locations and measured and true vertical depths. Give blowout preventer program, if any.

24. FOR: M. J. BRANNON

ORIGINAL SIGNED BY

SIGNED

Ewell N. WALSH

TITLE

President, Walsh Engr.
& Prod. Corp.

DATE

6/7/82

(This space for Federal or State office use)

PERMIT NO.

APPROVAL DATE

APPROVED BY

TITLE

DATE

CONDITIONS OF APPROVAL, IF ANY:

*See Instructions On Reverse Side

JUL 20 1982

OIL CONSERVATION DIVISION

STATE OF NEW MEXICO
ENERGY AND MINERALS DEPARTMENTP. O. BOX 2088
SANTA FE, NEW MEXICO 87501Form C-102
Revised 10-1-78

All distances must be from the outer boundaries of the Section

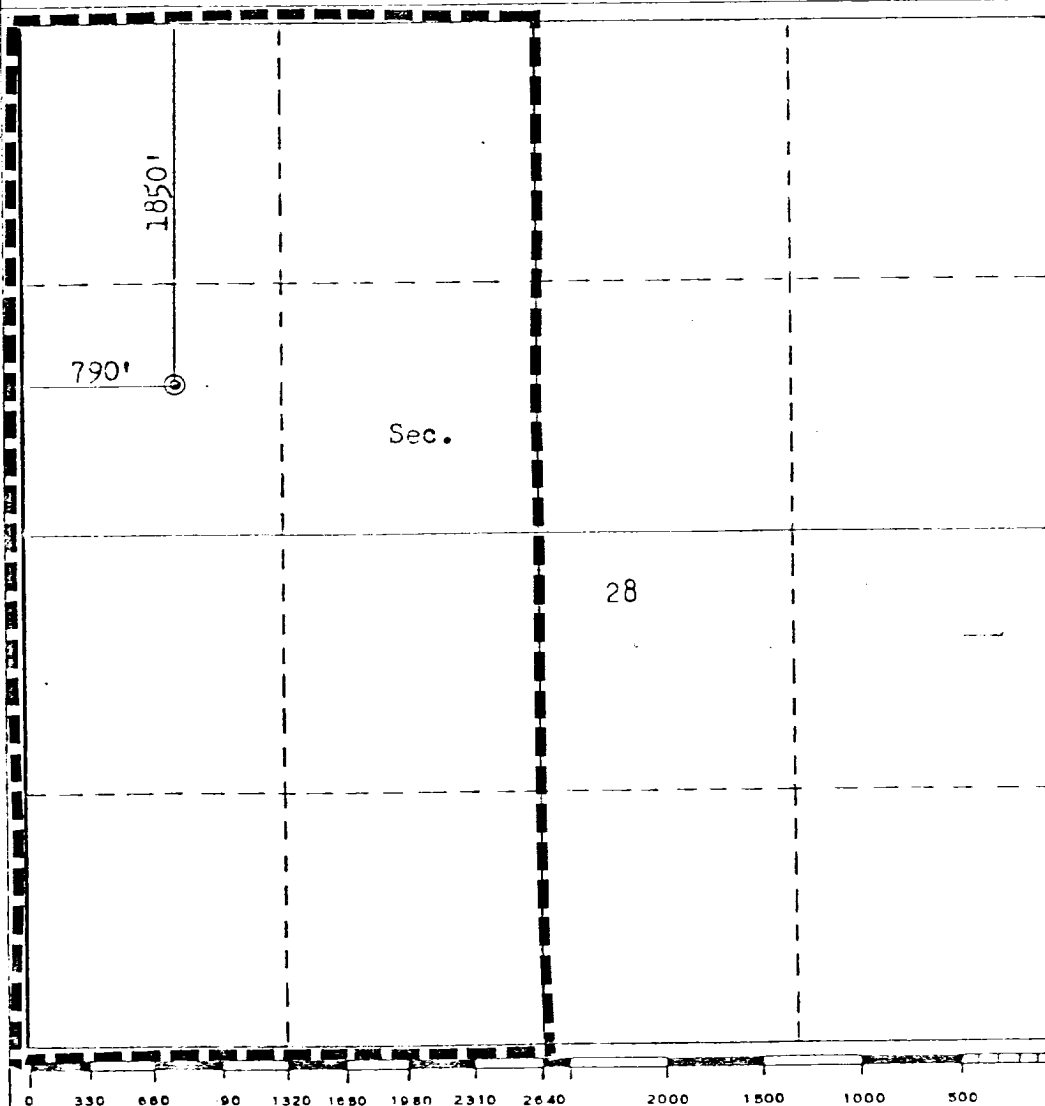
Operator M. J. BRANNON			Lease FEDERAL 28		Well No. 2
Unit Letter E	Section 28	Township 25N	Range 9W	County San Juan	
Actual Footage Location of Well: 1850 feet from the North line and 790 feet from the West line					
Ground Level Elev. 6673	Producing Formation Dakota		Pool Basin Dakota		Dedicated Acreage: W320 Acres

1. Outline the acreage dedicated to the subject well by colored pencil or hachure marks on the plat below.
2. If more than one lease is dedicated to the well, outline each and identify the ownership thereof (both as to working interest and royalty).
3. If more than one lease of different ownership is dedicated to the well, have the interests of all owners been consolidated by communitization, unitization, force-pooling, etc?

☐ Yes ☐ No If answer is "yes," type of consolidation _____

If answer is "no," list the owners and tract descriptions which have actually been consolidated. (Use reverse side of this form if necessary.) _____

No allowable will be assigned to the well until all interests have been consolidated (by communitization, unitization, forced-pooling, or otherwise) or until a non-standard unit, eliminating such interests, has been approved by the Commission.



CERTIFICATION

 I hereby certify that the information contained herein is true and complete to the best of my knowledge and belief.
 FOR: **M. J. BRANNON**

ORIGINAL SIGNED BY

 Name **EWELL N. WALSH**
 Ewell N. Walsh, PE

 Position
 President

 Company
 Walsh Engr. & Prod. Corp.

 Date
 6/7/82

I hereby certify that the well location shown on this plat was plotted from field notes of actual surveys made by me or under my supervision, and that the same is true and correct to the best of my knowledge and belief.

Date Surveyed

May 17, 1982

 Registered Professional Engineer
 and/or State Surveyor

Fred B. Kerr Jr.

Certificate No.

3950

B. Kerr, Jr.

