

UNITED STATES
DEPARTMENT OF THE INTERIOR
GEOLOGICAL SURVEY

APPLICATION FOR PERMIT TO DRILL, DEEPEN, OR PLUG BACK

1a. TYPE OF WORK

DRILL ☒DEEPEN ☐PLUG BACK ☐

b. TYPE OF WELL

OIL
WELL ☒GAS
WELL ☐OTHER ☐SINGLE
ZONE ☒MULTIPLE
ZONE ☐

2. NAME OF OPERATOR

Coronado Management Corporation

3. ADDRESS OF OPERATOR

c/o A. R. Kendrick, Box 516, Aztec, NM 87410

(505) 334-2555

4. LOCATION OF WELL (Report location clearly and in accordance with any State requirements.)

At surface 740' FSL 1860' FEL Sec. 23, T25N, R11W

At proposed prod. zone

14. DISTANCE IN MILES AND DIRECTION FROM NEAREST TOWN OR POST OFFICE

5 miles SSE from Carson Trading Post, NM

15. DISTANCE FROM PROPOSED*

LOCATION TO NEAREST
PROPERTY OR LEASE LINE, FT.
(Also to nearest drlg. unit line, if any)

740'

16. NO. OF ACRES IN LEASE

160

17. NO. OF ACRES ASSIGNED
TO THIS WELL

80

18. DISTANCE FROM PROPOSED LOCATION*

TO NEAREST WELL, DRILLING, COMPLETED,
OR APPLIED FOR, ON THIS LEASE, FT.

19. PROPOSED DEPTH

5100'

20. ROTARY OR CABLE TOOLS

Rotary

21. ELEVATIONS (Show whether DF, RT, GR, etc.)

6498 GR

22. APPROX. DATE WORK WILL START*

August 15, 1983

23. PROPOSED CASING AND CEMENTING PROGRAM

This action is subject to administrative
appeal pursuant to 30 CFR 290.

SIZE OF HOLE	SIZE OF CASING	WEIGHT PER FOOT	SETTING DEPTH	QUANTITY OF CEMENT
12 1/2"	8 5/8"	32#	300'	158 sx, 133 cu ft. circ to surface
7 7/8"	4 1/2"	10.5#	5100'	805 sx, 950 cu ft. 2 stage cement

Run 3000 psi Test hydraulic and pneumatic actuate BOP tested daily.

RECEIVED
AUG 8 - 1983
OIL CON. DIV.
DIST. 3

IN ABOVE SPACE DESCRIBE PROPOSED PROGRAM: If proposal is to deepen or plug back, give data on present productive zone and proposed new productive zone. If proposal is to drill or deepen directionally, give pertinent data on subsurface locations and measured and true vertical depths. Give blowout preventer program, if any.

24.

SIGNED

AR Kendrick

TITLE

Agent

DATE

8/1/83

(This space for Federal or State office use)

PERMIT NO.

APPROVAL DATE

APPROVED BY

TITLE

DATE

CONDITIONS OF APPROVAL, IF ANY:

ak2

1983

Quila

All distances must be from the outer boundaries of the Section.

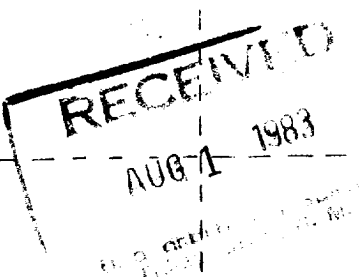
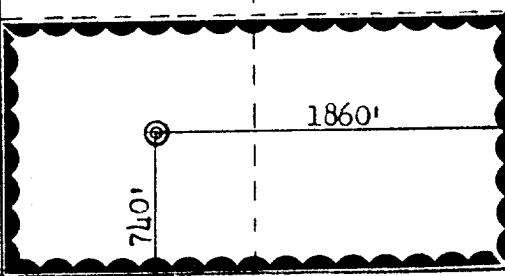
Operator CORONADO MANAGEMENT CORPORATION			Lease BISTI		Well No. 2
Unit Letter 0	Section 23	Township 25N	Range 11W	County San Juan	
Actual Footage Location of Well: 740 feet from the South line and 1860 feet from the East line					
Ground Level Elev. 6498	Producing Formation Lower Gallup	Pool Bisti-Lower Gallup		Dedicated Acreage 2.80 Acres	

1. Outline the acreage dedicated to the subject well by colored pencil or hachure marks on the plat below.
2. If more than one lease is dedicated to the well, outline each and identify the ownership thereof (both as to working interest and royalty).
3. If more than one lease of different ownership is dedicated to the well, have the interests of all owners been consolidated by communitization, unitization, force-pooling, etc?

☐ Yes ☐ No If answer is "yes," type of consolidation _____

If answer is "no," list the owners and tract descriptions which have actually been consolidated. (Use reverse side of this form if necessary.) _____

No allowable will be assigned to the well until all interests have been consolidated (by communitization, unitization, forced-pooling, or otherwise) or until a non-standard unit, eliminating such interests, has been approved by the Commission.

Sec.		<div style="text-align: center;">  </div>	
23		<div style="text-align: center;">  </div>	

Scale: 1"=1000'

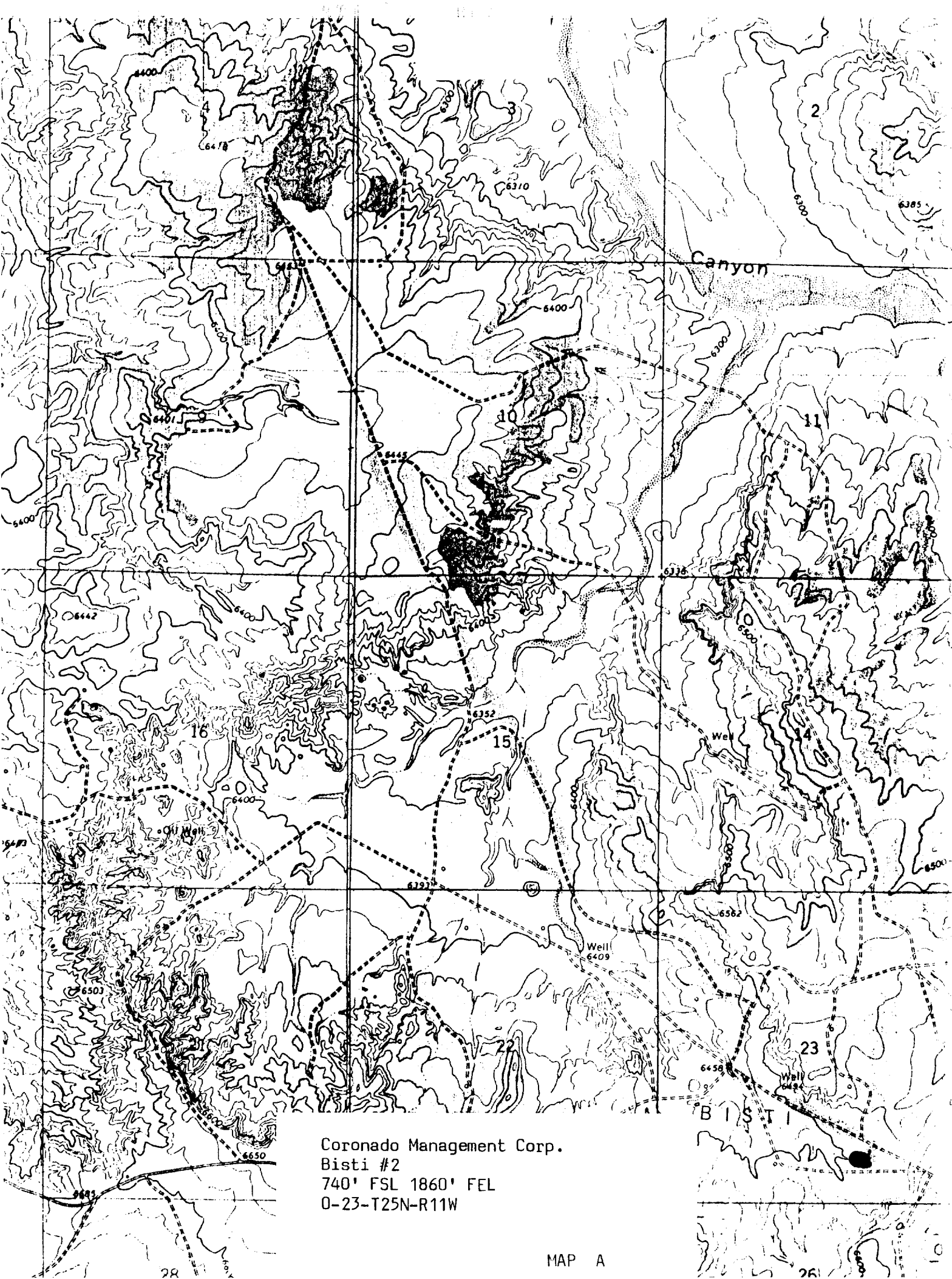
CERTIFICATION

I hereby certify that the information contained herein is true and complete to the best of my knowledge and belief.

Name AR Kendrick
Position Agent
Company Coronado Management Corp.
Date July 5, 1983

I hereby certify that the well location shown on this plat was plotted from field notes of actual surveys made by me or under my supervision, and that the same is true and correct to the best of my knowledge and belief.

Date Surveyed June 30, 1983
Re-issued June 30, 1983
Registered Professional Engineer and Land Surveyor
Fred B. Kern Jr.
Certificate No. 3950



Coronado Management Corp.
Bisti #2
740' FSL 1860' FEL
0-23-T25N-R11W

MAP A