

UNITED STATES  
DEPARTMENT OF THE INTERIOR  
BUREAU OF LAND MANAGEMENT

SUNDRY NOTICES AND REPORTS ON WELLS

Do not use this form for proposals to drill or to deepen or reentry to a different reservoir,  
Use "APPLICATION FOR PERMIT--" for such proposals.

SUBMIT IN TRIPLICATE

RECEIVED  
BLM

JUN - 1 PM 1:11

BLM, ALBUQUERQUE, NM

FORM APPROVED

Budget Bureau No. 1004-0135

Expires: March 31, 1993

5. Lease Designation and Serial No.  
NOO-C-14-20-5250 (WC)

6. If Indian, Allottee or Tribe Name

7. If Unit or CA. Agreement Designation

1. Type of Well  
☒ Oil Well ☐ Gas Well ☐ Other

2. Name of Operator  
Central Resources, Inc.

3. Address and Telephone No.  
P.O. Box 1247, Bloomfield, New Mexico 87413 (505)-632-3476

4. Location of Well (Footage, Sec., T., R., M., or Survey Description)  
740' FSL, 1680' FEL, Section 23, T25N, R11W

12. CHECK APPROPRIATE BOX(s) TO INDICATE NATURE OF NOTICE, REPORT, OR OTHER DATA

TYPE OF SUBMISSION

TYPE OF ACTION

☒ Notice of Intent  
☐ Subsequent Report  
☐ Final Abandonment Notice

☒ Abandonment  
☐ Recompletion  
☐ Plugging Back  
☐ Casing Repair  
☐ Altering Casing  
☐ Other

☐ Change of Plans  
☐ New Construction  
☐ Non-Routine Fracturing  
☐ Water Shut-Off  
☐ Conversion to Injection  
☐ Dispose Water

(Note: Report results of multiple completion on Well Completion or Recompletion Report and Log form.)

13. Describe Proposed or Completed Operations (Clearly state all pertinent dates, including estimated date of starting any proposed work. If well is directionally drilled, give subsurface locations and measured and true vertical depths for all markers and zones pertinent to this work.)\*

Central Resources, Inc. intends to plug the well in accordance with regulations. All casing strings in the well have been circulated to surface with cement. A CIBP was set above the perforations at 4921' with wireline. The casing and plug were tested and passed the MIT requirements. A schematic of the wellbore is attached.

Proposed procedure:

- ~~Pull tubing to 4500'. Circulate 100' of cement to spot from 4400' to 4500'.~~
- ~~Pull tubing to 2000'. Circulate 100' of cement to spot from 1900' to 2000'.~~
- ~~Pull tubing to 1300'. Circulate 100' of cement to spot from 1200' to 1300'.~~
- ~~Pull tubing to 440'. Circulate 200' of cement to spot from 200' to 400'.~~
- ~~Pull tubing to 30'. Fill hole with cement.~~
- Cut wellhead and install dry hole marker. Clear and remediate location.

14. I hereby certify that the foregoing is true and correct

Signed Rodney L. Seale Title District Manager

Date May 28, 1999

(This space for Federal or State office use)

Approved by Team Lead, Petroleum Management Title Team Lead, Petroleum Management

Date JUN - 9 1999

Conditions of approval, if any:

Title 18 U.S.C. Section 1001, makes it a crime for any person knowingly and willfully to make to any department or agency of the United States any false, fictitious or fraudulent statements or representations as to any manner within its jurisdiction.

\*See Instruction on Reverse Side

# CENTRAL RESOURCES, INC.

## Bisti No. 2

Elevation: 6498'GL, 6510'KB

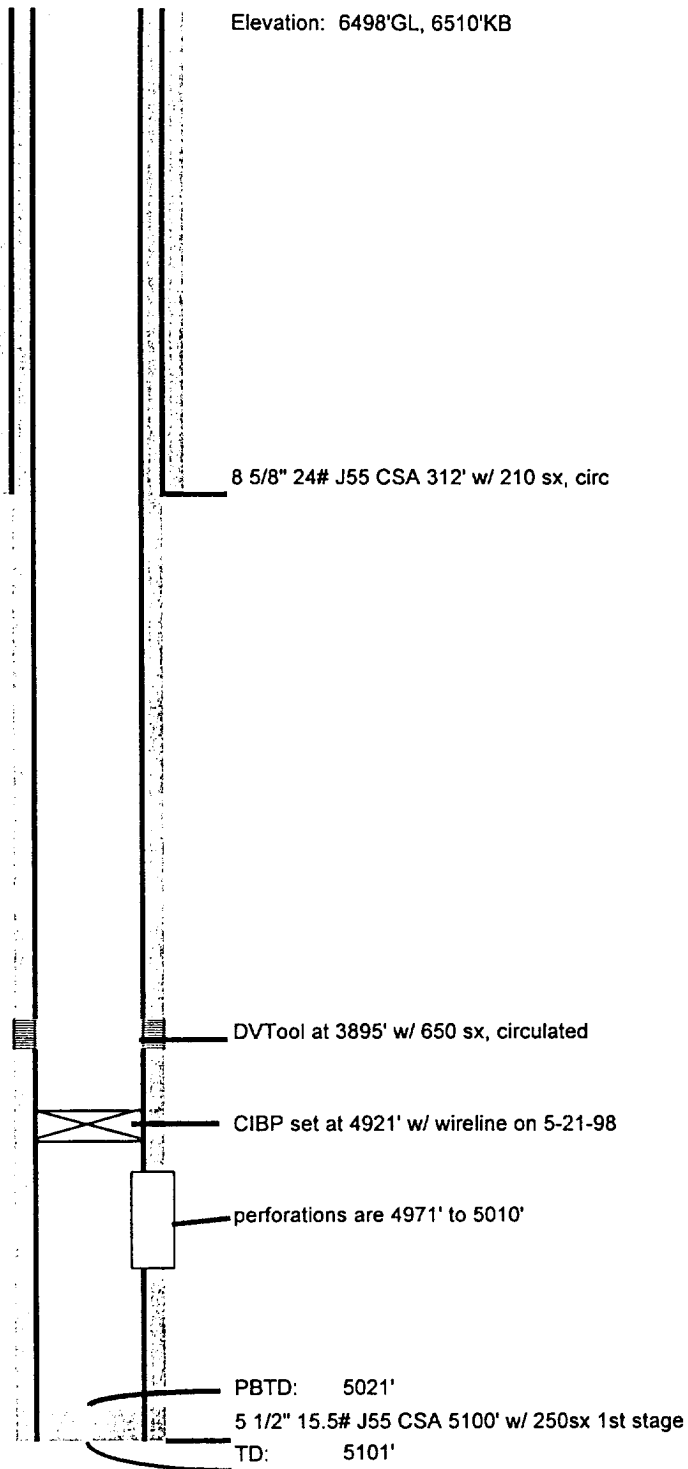
Location: 740' FSL, 1860' FEL, Sec 23,  
T25N, R11W, San Juan  
County, New Mexico

Field: Bisti

Zone: Lower Gallup

Perfs: CIBP over perfs

Spud Date: 8-24-83



  
Rod Seale  
5-28-99

UNITED STATES DEPARTMENT OF THE INTERIOR

BUREAU OF LAND MANAGEMENT  
FARMINGTON DISTRICT OFFICE  
1235 LA PLATA HIGHWAY  
FARMINGTON, NEW MEXICO 87401

Attachment to notice of Intention to Abandon:

Re: Permanent Abandonment

Well: 2 Bisti

CONDITIONS OF APPROVAL

1. Plugging operations authorized are subject to the attached "General Requirements for Permanent Abandonment of Wells on Federal and Indian Lease."
2. Mike Flanigan with the Farmington Office is to be notified at least 24 hours before the plugging operations commence (505) 599-8907
3. The following modifications to your plugging program are to be made:
  - a) Spot a cement plug from 4921' - 4746' to cover the Gallup top @ 4796'.
  - b) Spot a cement plug from 2097' - 1997' to cover the Mesaverde top @ 2047'.
  - c) Spot a cement plug from 1382' - 1282' to cover the Pictured Cliffs top @ 1332'.
  - d) Spot a cement plug from 1103' - 1003' to cover the Fruitland top @ 1053'.
  - e) Spot a cement plug from 597' - 262' to cover the Ojo Alamo interval and the surface casing shoe.
  - f) Place the surface plug from 50' to surface.

Office Hours: 7:45 a.m. to 4:30 p.m.