

UNITED STATES
DEPARTMENT OF THE INTERIOR
GEOLOGICAL SURVEY

APPLICATION FOR PERMIT TO DRILL, DEEPEN, OR PLUG BACK

1a. TYPE OF WORK

DRILL ☒DEEPEN ☐PLUG BACK ☐

b. TYPE OF WELL

OIL
WELL ☒GAS
WELL ☐OTHER ☐SINGLE
ZONE ☐MULTIPLE
ZONE ☐

2. NAME OF OPERATOR

Southern Union Exploration

3. ADDRESS OF OPERATOR

P.O. Box 2179 Farmington, NM 87409

4. LOCATION OF WELL (Report location clearly and in accordance with any State requirements.)

At surface 1980' FNL & 1980' FEL

At proposed prod. zone

Same

14. DISTANCE IN MILES AND DIRECTION FROM NEAREST TOWN OR POST OFFICE*

26 miles south of Farmington

15. DISTANCE FROM PROPOSED*

LOCATION TO NEAREST
PROPERTY OR LEASE LINE, FT.
(Also to nearest drlg. unit line, if any)

1980'

18. DISTANCE FROM PROPOSED LOCATION*
TO NEAREST WELL, DRILLING, COMPLETED,
OR APPLIED FOR, ON THIS LEASE, FT.

1320'

16. NO. OF ACRES IN LEASE

240

19. PROPOSED DEPTH

5000'

17. NO. OF ACRES ASSIGNED
TO THIS WELL

5/80

20. ROTARY OR CABLE TOOLS

Rotary

21. ELEVATIONS (Show whether DF, RT, GR, etc.)

DRILLING OPERATIONS AUTHORIZED ARE
SUBJECT TO COMPLIANCE WITH ATTACHED

22. APPROX. DATE WORK WILL START*

August 18, 1983

23. "GENERAL REQUIREMENTS" CEMENTING PROGRAM

This action is subject to administrative
appeal pursuant to 30 CFR 290.

SIZE OF HOLE	SIZE OF CASING	WEIGHT PER FOOT	SETTING DEPTH
12 1/4"	8 5/8"	32#	300'
7 7/8"	4 1/2"	10.5#	5000'

Circ to surface 250 cu/ft C1 B
650 cu/ft 50/50 POZ C1 B

1. Drill 12 1/4" hole to 300' & set 8 5/8" csg. Cement to circulate to surface.
2. Pressure test BOP & log daily tests while drilling 7 7/8" hole to 5000'.
3. Log w/induction & density, set 5 1/2" csg @ 5000' if warranted.
4. Cement bond log, perforate & stimulate.

EXHIBITS ATTACHED:

- A. Location & elevation plat.
- B. Access & road map to location & radius map.
- C. Blow out preventer schematic.
- D. Multi point requirements for APD.
- E. 10 point compliance.
- F. Production facilities layout.
- G. Drillpad layout & cut/fill crosssection.

IN ABOVE SPACE DESCRIBE PROPOSED PROGRAM: If proposal is to deepen or plug back, give data on present productive zone and proposed new productive zone. If proposal is to drill or deepen directionally, give pertinent data on subsurface locations and measured and true vertical depths. Give blowout preventer program, if any.

24.

SIGNED

Drlg. & Prod. Manager

(This space for Federal or State office use)

PERMIT NO.

APPROVAL DATE

APPROVED BY

TITLE

CONDITIONS OF APPROVAL, IF ANY:

APPROVED
AS AMENDED

OCT 21 1983

AREA MANAGER
FARMINGTON RESOURCE AREA

NMOCC

OIL CONSERVATION DIVISION

P. O. BOX 2088

SANTA FE, NEW MEXICO 87501

Form C-107
Revised 10-1-78

STATE OF NEW MEXICO

ENERGY AND MINERALS DEPARTMENT

All distances must be from the outer boundaries of the Section.

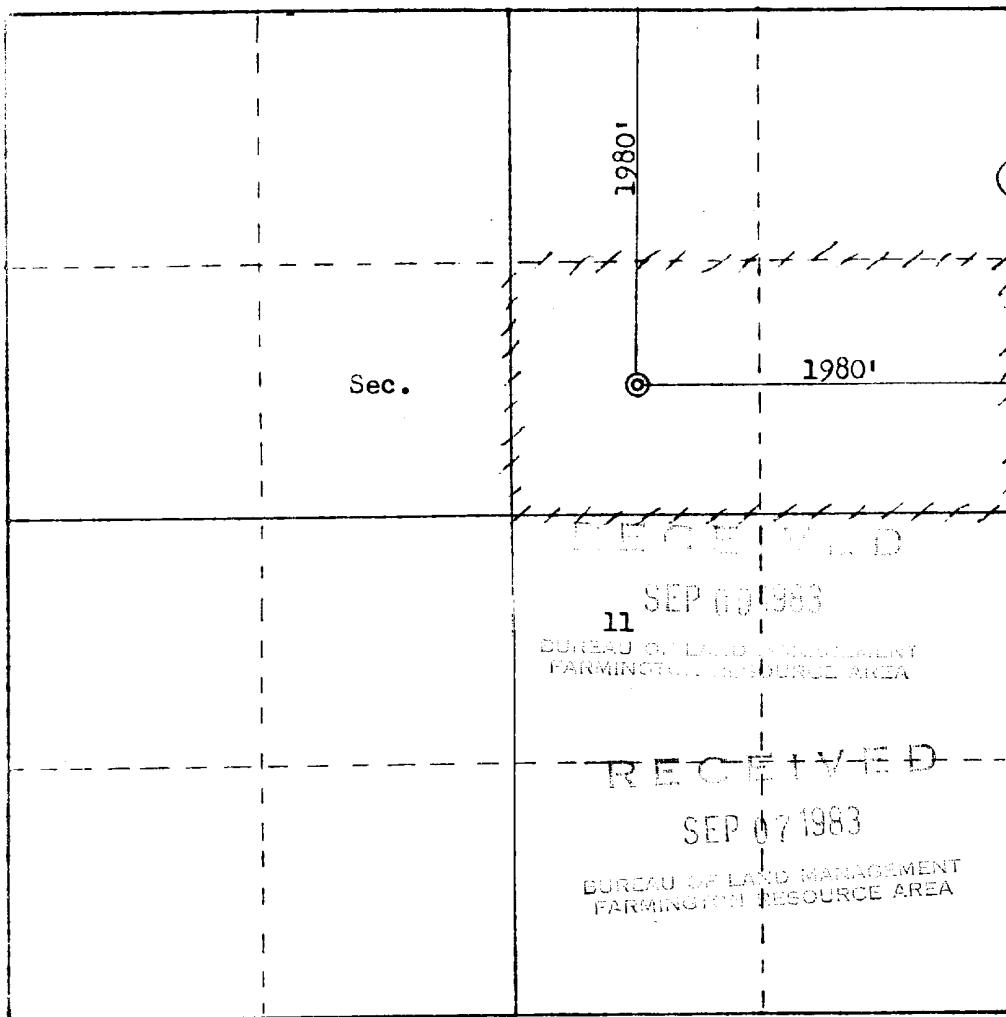
Operator SOUTHERN UNION EXPLORATION COMPANY			Lease BERRY-FEDERAL		Well No. 2
Unit Letter G	Section 11	Township 25N	Range 13W	County San Juan	
Actual Footage Location of Well: 1980 feet from the North line and 1980 feet from the East line					
Ground Level Elev. 6296	Producing Formation Gallup		Pool Bisti Lower Gallup		Dedicated Acreage: 80 Acres

1. Outline the acreage dedicated to the subject well by colored pencil or hachure marks on the plat below.
2. If more than one lease is dedicated to the well, outline each and identify the ownership thereof (both as to working interest and royalty).
3. If more than one lease of different ownership is dedicated to the well, have the interests of all owners been consolidated by communitization, unitization, force-pooling, etc?

☐ Yes ☐ No If answer is "yes," type of consolidation _____

If answer is "no," list the owners and tract descriptions which have actually been consolidated. (Use reverse side of this form if necessary.) _____

No allowable will be assigned to the well until all interests have been consolidated (by communitization, unitization, forced-pooling, or otherwise) or until a non-standard unit, eliminating such interests, has been approved by the Commission.



Scale: 1"=1000'

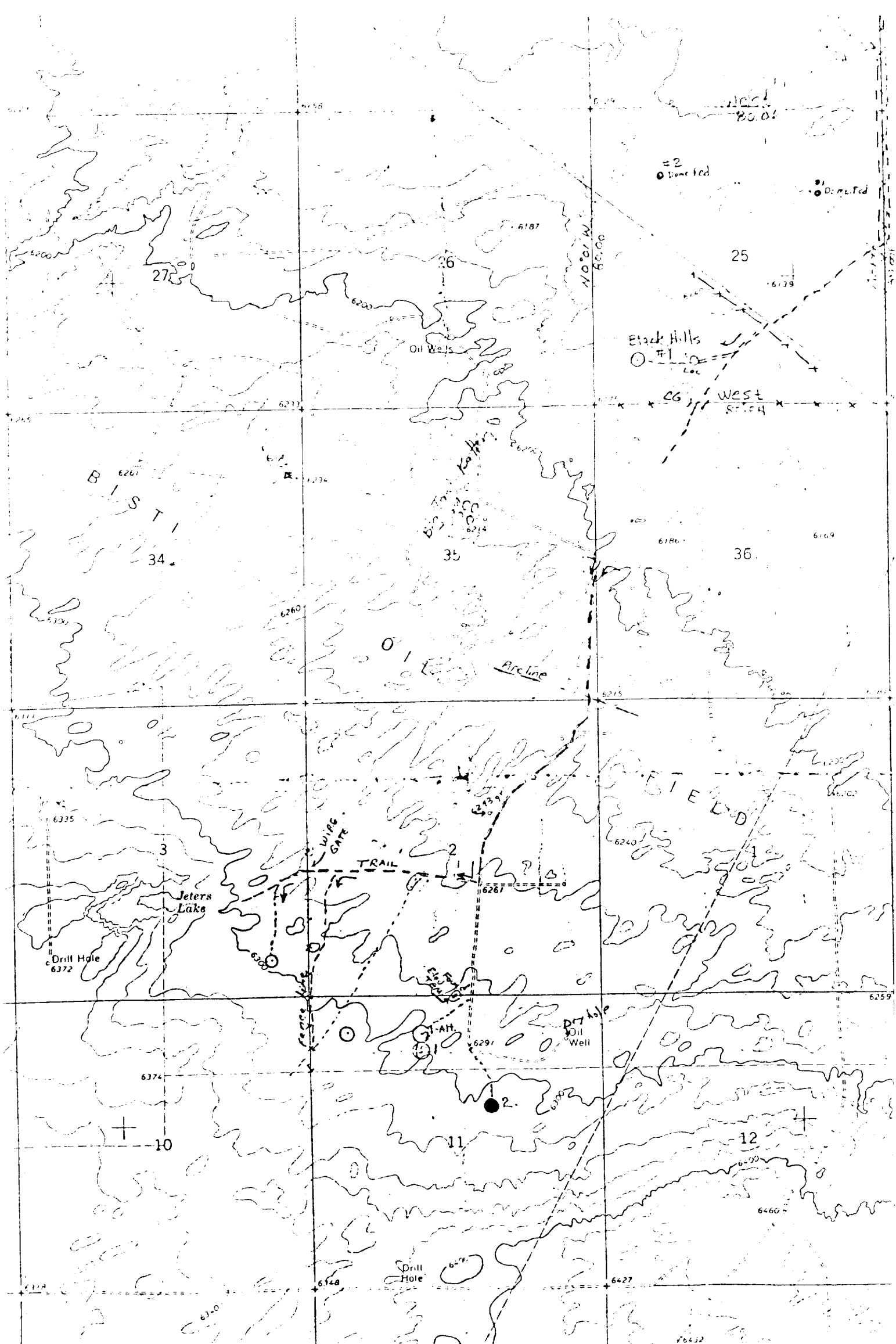
CERTIFICATION

I hereby certify that the information contained herein is true and complete to the best of my knowledge and belief.

Name: Jeffrey J. Bollschweiler
 Position: Drilling & Production Supt.
 Company: Southern Union Exploration
 Date: 7-15-83

I hereby certify that the well location shown on this plat was plotted from field notes of actual surveys made by me or under my supervision, and that the same is true and correct to the best of my knowledge and belief.

Date Surveyed: July 7, 1983
 Registered Professional Engineer and Land Surveyor: Fred B. Kerr Jr.
 Certificate No. 3950



Vicinity Map for
 SOUTHERN UNION EXPLORATION CO. #2 BERRY-FEDERAL
 1980'FNL 1980'FEL Sec. 11-T25N-R13W
 SAN JUAN COUNTY, NEW MEXICO