

Distribution: 0+4 (BLM); 1-Crystal; 1-Earleen; RL Bayless; Well File

Form 3160-5  
(June 1990)

UNITED STATES  
DEPARTMENT OF THE INTERIOR  
BUREAU OF LAND MANAGEMENT

FORM APPROVED  
Budget Bureau No. 1004-0135  
Expires: March 31, 1993

5. Lease Designation and Serial No.

NM-47169

6. If Indian, Allottee or Tribe Name

7. If Unit or CA, Agreement Designation

8. Well Name and No.  
SOB Federal 1

9. API Well No.  
30-045-25927

10. Field and Pool, or Exploratory Area  
Dufers Point Gallup-Dakot

11. County or Parish, State  
San Juan,  
New Mexico

SUNDRY NOTICES AND REPORTS ON WELLS

Do not use this form for proposals to drill or to deepen or reentry to a different reservoir.  
Use "APPLICATION FOR PERMIT—" for such proposals

SUBMIT IN TRIPLICATE

1. Type of Well

☒ Oil Well ☐ Gas Well ☐ Other

2. Name of Operator

Merrion Oil & Gas Corporation

3. Address and Telephone No.

P. O. Box 840, Farmington, New Mexico 87499

(505) 327-9801

4. Location of Well (Footage, Sec., T., R., M., or Survey Description)

1850' FNL & 990' FWL  
Section 8, T25N, R8W

12. CHECK APPROPRIATE BOX(s) TO INDICATE NATURE OF NOTICE, REPORT, OR OTHER DATA

TYPE OF SUBMISSION

- ☒ Notice of Intent  
☐ Subsequent Report  
☐ Final Abandonment Notice

TYPE OF ACTION

- ☐ Abandonment  
☐ Recompletion  
☐ Plugging Back  
☐ Casing Repair  
☐ Altering Casing  
☒ Other Stimulate

- ☐ Change of Plans  
☐ New Construction  
☐ Non-Routine Fracturing  
☒ Water Shut-Off  
☐ Conversion to Injection  
☐ Dispose Water

(Note: Report results of multiple completion on Well Completion or Recompletion Report and Log form.)

13. Describe Proposed or Completed Operations (Clearly state all pertinent details, and give pertinent dates, including estimated date of starting any proposed work. If well is directionally drilled, give subsurface locations and measured and true vertical depths for all markers and zones pertinent to this work.)\*

Merrion requests approval to conduct the work detailed on the attached workover to return this well to production  
on a sustainable basis.

RECEIVED  
MAY 31 1994  
OIL CON. DIV.  
DIST. 3

RECEIVED  
MAY 10 1994  
DIST. 3

14. I hereby certify that the foregoing is true and correct

Signed

Title

Operations Manager

Date

5/18/94

(This space for Federal or State Office use)

Approved by

Title

Conditions of approval, if any:

RECEIVED  
MAY 23 1994  
DIST. 3

Title 18 U.S.C. Section 1001, makes it a crime for any person knowingly and willfully to make to any department or agency of the United States any false, fictitious or fraudulent statements or representations as to any matter within its jurisdiction.


\*See instruction on Reverse Side  
NM00D

# MERRION OIL & GAS CORPORATION

## Workover Procedure

May 3, 1994

**Well:** SOB FEDERAL NO. 1  
**Location:** 1850'fml & 990'fwi (sw nw)  
Sec 8, T25N, R08W  
San Juan County, New Mexico

**Field:** Dufers Pt Glp/Dkta  
**Elevation:** 6,454' RKB  
6,441' GR  
**By:** Steve Dunn 

---

### Procedure:

#### Isolate Main Dakota Perfs & Test

1. Move in, rig up. Recover plunger. Blow down tubing and casing. Install BOPs.
2. Pull out of hole with 2 3/8" production tubing. Remove plunger lift equipment.
3. Pick up 4 1/2" retrievable casing packer. Run in hole and isolate Main Dakota perfs: 6,580'-6,590'.
4. Swab test and measure stabilized fluid inflow and gas rate.
5. If Main Dakota producing primarily water, plug off perfs by setting a drillable bridge plug above perfs at 6,550'KB.

#### Isolate Upper Mancos Perfs & Test

6. Pick up 4 1/2" bridge plug and retrievable casing packer. Run in hole and isolate Upper Mancos perfs: 4,632'-4,658'KB.
7. Swab test and measure stabilized fluid inflow and gas rate.
8. If Upper Mancos producing primarily water, plug off perfs by spotting and squeezing with cement.
9. Drill out cement and dry test perfs.

#### Isolate Graneros Perfs & Swab

10. Unset 4 1/2" bridge plug, pull out of hole and lay down. Run in hole with retrievable casing packer, isolate Graneros perfs: 6,373'-6,404'.
11. Swab Graneros down and test for inflow.

#### Pump Nitrified Acid *(Acid Job is Optional)*

12. If general inflow is unacceptable, pump nitrified acid system to clean up as follows:
  - Pump 1,000 gallons 15% HCL with 500 SCF/BBL Nitrogen and 2 gal/Mgal Corrosion Inhibitor, 3 gal/Mgal Foaming Agent, 3 gal/Mgal Surfactant/Suspender, 5 gal/Mgal Iron Control, 5 gal/Mgal Concentrated Acetic Acid, 1 gal/Mgal Aqua flow Surfactant.
  - Flush to bottom perforation with 38.5 quality Nitrified 2%KCL water.
13. Flow back, and test for inflow.

### **Pump X-Link Gelled Water Frac**

14. Pull out of hole with casing packer.
15. Pick up 4 1/2" casing packer and 2 7/8" Buttress N80 frac string and run in hole. Set packer above Graneros Perfs: 6,373'-6,404'.
16. Rig up Frac Company and pump X-Link Gel Water frac job to be provided later.
17. Flow back immediately following frac. Put to Tank overnight.

### **Clean Up and Return to Production**

18. Test well and flow to clean up stimulation.
19. Unset packer. Pull out of hole with frac string and lay down.
20. Re-run production tubing string and re-install downhole pump on sucker rods if necessary to clean up well.
21. Put well on to flow or pump and closely track production to evaluate.

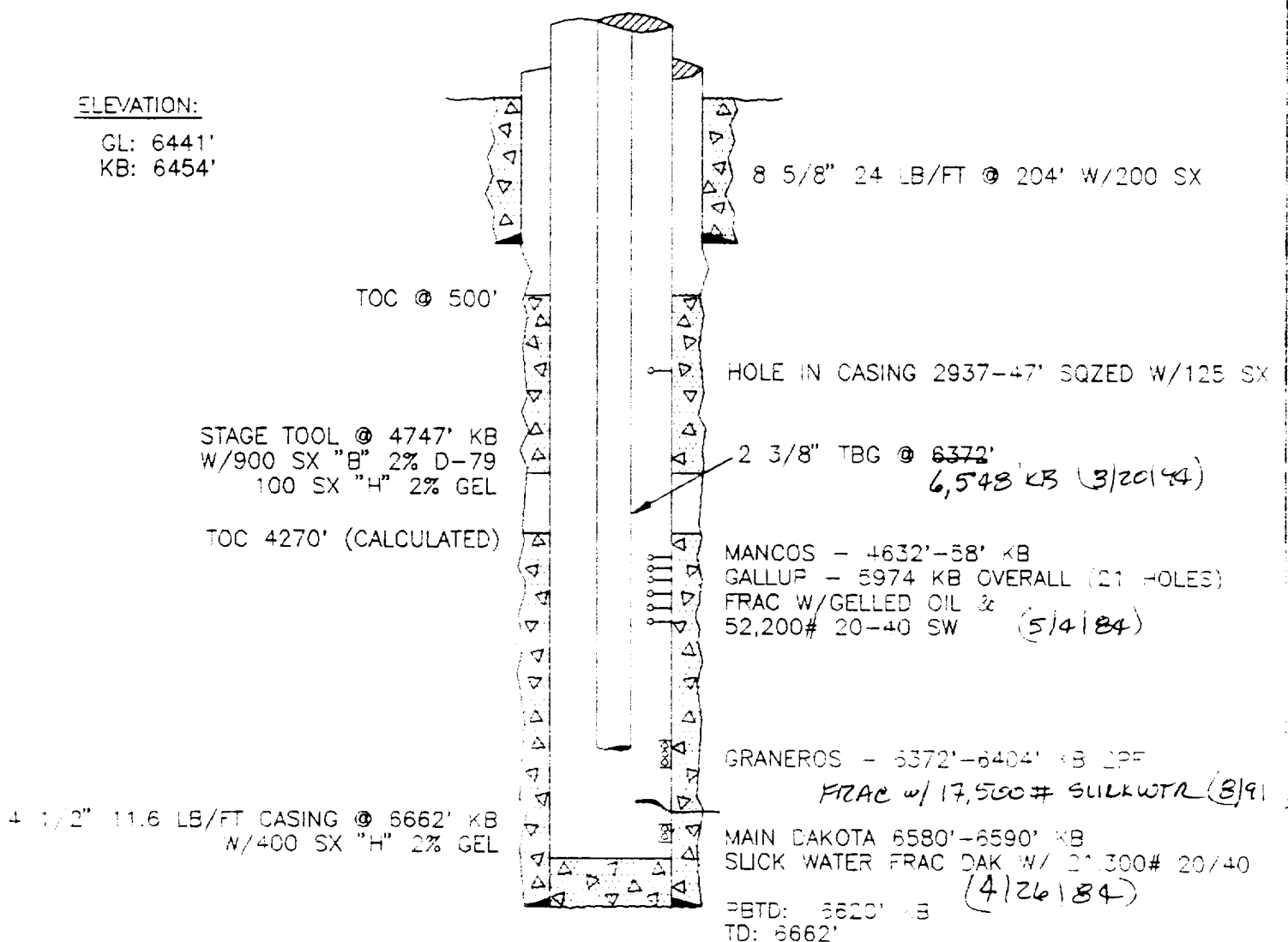
ARRION OIL AND GAS COR.  
WELLBORE SCHEMATIC

SOB FED. #1

1850' FNL & 990' FWL  
SECTION 8, T25N, R8W  
SAN JUAN COUNTY, NEW MEXICO  
ENG: G.F. SHARPE DRFT: M.E.G.  
DATE: 8-7-91

ELEVATION:

GL: 6441'  
KB: 6454'



CAPACITIES:

4 1/2" - 7 3/4" ANNULUS = .2171 CU. FT/FT  
4 1/2" CAPACITY .0872 CU. FT/FT