

UNITED STATES
DEPARTMENT OF THE INTERIOR
GEOLOGICAL SURVEY

APPLICATION FOR PERMIT TO DRILL, DEEPEN, OR PLUG BACK

1a. TYPE OF WORK

DRILL ☒DEEPEN ☐PLUG BACK ☐

b. TYPE OF WELL

OIL
WELL ☒GAS
WELL ☐

OTHER

SINGLE
ZONE ☐MULTIPLE
ZONE ☐

2. NAME OF OPERATOR

Merrion Oil & Gas Corporation

3. ADDRESS OF OPERATOR

P. O. Box 1017, Farmington, New Mexico 87499

4. LOCATION OF WELL (Report location clearly and in accordance with any State requirements.)

At surface

790' FSL and 790' FWL

At proposed prod. zone Same

14. DISTANCE IN MILES AND DIRECTION FROM NEAREST TOWN OR POST OFFICE* OF LAND MANAGEMENT

20 miles South of Bloomfield, New Mexico

15. DISTANCE FROM PROPOSED*

LOCATION TO NEAREST
PROPERTY OR LEASE LINE, FT.
(Also to nearest drlg. unit line, if any)

790'

16. NO. OF ACRES IN LEASE

160

17. NO. OF ACRES ASSIGNED
TO THIS WELL

160

18. DISTANCE FROM PROPOSED LOCATION*
TO NEAREST WELL, DRILLING, COMPLETED,
OR APPLIED FOR, ON THIS LEASE, FT.

3250'

19. PROPOSED DEPTH

6700'

20. ROTARY OR CABLE TOOLS

Rotary

21. ELEVATIONS (Show whether DF, RT, GR, etc.)

6401 GL

22. APPROX. DATE WORK WILL START*

Summer, 1984

23.

DRILLING OPERATIONS AUTHORIZED ARE
SUBJECT TO COMPLIANCE WITH ATTACHED
"GENERAL REQUIREMENTS"
PROPOSED CASING AND CEMENTING PROGRAMThis action is subject to administrative
appeal pursuant to 30 CFR 290.

SIZE OF HOLE	SIZE OF CASING	WEIGHT PER FOOT	SETTING DEPTH	QUANTITY OF CEMENT
12-1/4"	8-5/8"	24 #/ft	200 ft.	175 sx (361 cu. ft.)
7-7/8"	4-1/2"	10.5 #/ft.	6700 ft.	1200 sx.

Will drill 12-1/4" surface hole to 200 ft. and set 200 ft. of 8-5/8", 24 #/ft, J-55 grade casing with 175 sx Class B cement with 3% CaCl₂. Will drill 7-7/8" hole to 6700 ft. Will run open hole logs. No other testing planned. If well appears productive, will run 6700 ft. of 4-1/2", 10.5 #/ft, J-55 grade casing and stage cement. First stage will cement with 450 sx Class H 2% gel (1.22 cu. ft./sk. yield) 549 cu. ft. cement to cover Gallup interval from TD. Estimated top of cement is 5600 ft. Will set stage collar at 4671 ft. below Point Lookout Formation. Second stage will cement with 700 sx Class B 2% D-79 (2.06 cu. ft./sk) 1442 cu. ft. cement. Followed by 150 sx Class H 2% gel (1.22 cu. ft./sk. yield) 61 cu. ft. cement to cover Mesaverde, Chacra, Pictured Cliffs, Fruitland and Ojo Alamo. Top of cement will be at surface.

Drilling circulating medium will be low solids, non dispersed, low water loss mud using bentonite, starch, CMC, and fresh water.

Minimum specifications for pressure control is 10", 900 series double ram blow out preventer. Will perforate and stimulate as required for completion.

IN ABOVE SPACE DESCRIBE PROPOSED PROGRAM: If proposal is to deepen or plug back, give data on present productive zone and proposed new productive zone. If proposal is to drill or deepen directionally, give pertinent data on subsurface locations and measured and true vertical depths. Give blowout preventer program, if any.

24.

SIGNED

TITLE Operations Manager

DATE 4/27/84

(This space for Federal or State office use)

PERMIT NO.

APPROVAL DATE

APPROVED BY

CONDITIONS OF APPROVAL, IF ANY:

MAY 17 1984

TITLE

OIL CON. DIV.
DIST. 3

NMOCC

APPROVED
AS AMENDEDDATE
MAY 16 1984AREA MANAGER
FARMINGTON RESOURCE AREA

OIL CONSERVATION DIVISION

STATE OF NEW MEXICO
ENERGY AND MINERALS DEPARTMENTP. O. BOX 2088
SANTA FE, NEW MEXICO 87501Form C-107
Revised 10-1-78

All distances must be from the outer boundaries of the Section.

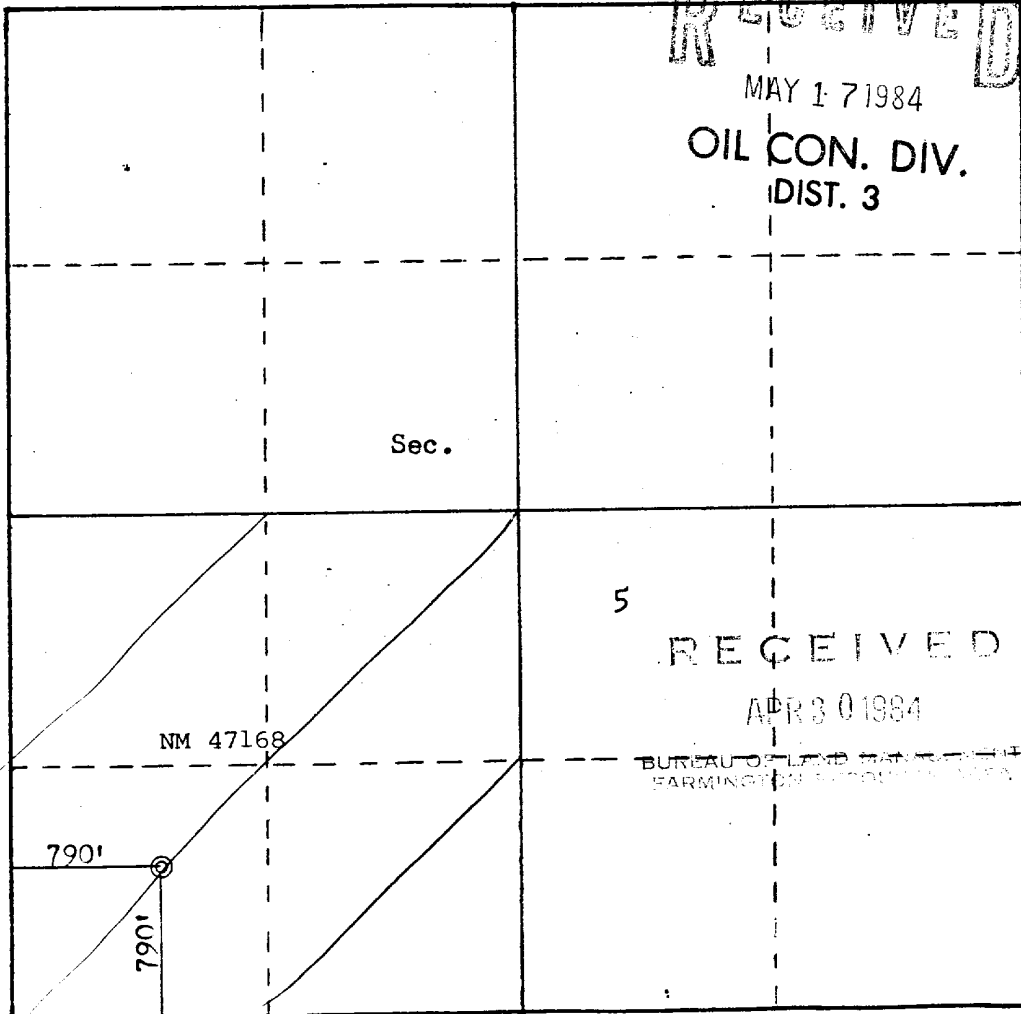
Operator MERRION OIL & GAS CORPORATION			Lease CUSTER-FEDERAL		Well No. 1
Unit Letter M	Section 5	Township 25N	Range 8W	County San Juan	
Actual Footage Location of Well: 790 feet from the South line and 790 feet from the West line					
Ground Level Elev: 6401	Producing Formation Gallup/Dakota	Pool Dufers Point Gallup Dakota		Dedicated Acreage 160 Acres	

1. Outline the acreage dedicated to the subject well by colored pencil or hatchure marks on the plat below.
2. If more than one lease is dedicated to the well, outline each and identify the ownership thereof (both as to working interest and royalty).
3. If more than one lease of different ownership is dedicated to the well, have the interests of all owners been consolidated by communitization, unitization, force-pooling, etc?

☐ Yes ☐ No If answer is "yes," type of consolidation _____

If answer is "no," list the owners and tract descriptions which have actually been consolidated. (Use reverse side of this form if necessary.) _____

No allowable will be assigned to the well until all interests have been consolidated (by communitization, unitization, forced-pooling, or otherwise) or until a non-standard unit, eliminating such interests, has been approved by the Commission.



Scale: 1"=1000'

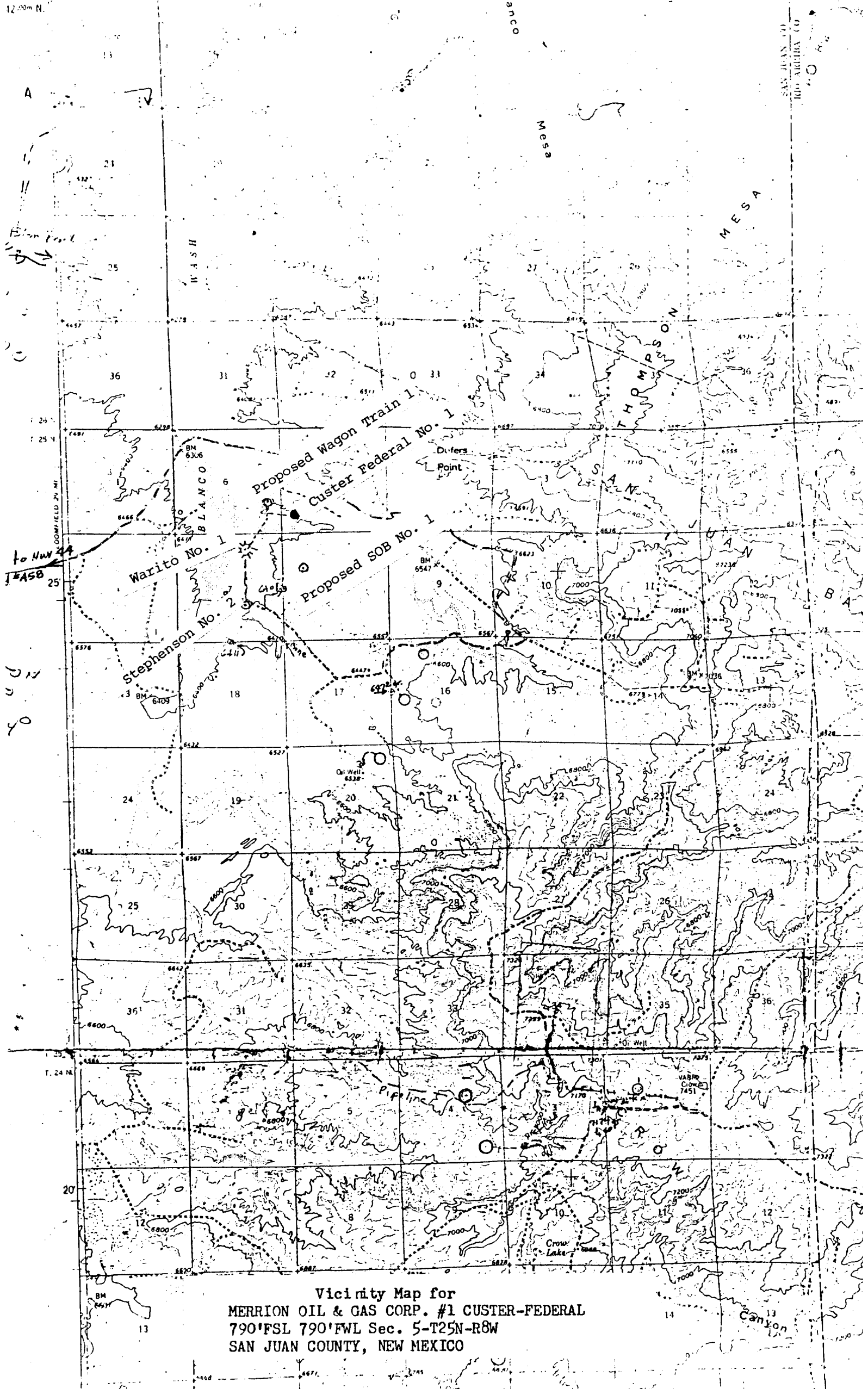
CERTIFICATION

I hereby certify that the information contained herein is true and complete to the best of my knowledge and belief.

Name
Steve S. Dunn
Position
Operations Manager
Company
Merrion Oil & Gas Corporation
Date
3/23/84

I hereby certify that the well location shown on this plat was plotted from field notes of actual surveys made by me or under my supervision, and that the same is true and correct to the best of my knowledge and belief.

Date Surveyed
March 20, 1984
Registered Professional Engineer and Land Surveyor
Fred E. Kerr Jr.
Certificate No. 3950



Vicinity Map for
MERRION OIL & GAS CORP. #1 CUSTER-FEDERAL
790°FSL 790°FWL Sec. 5-T25N-R8W
SAN JUAN COUNTY, NEW MEXICO