

UNITED STATES
DEPARTMENT OF THE INTERIOR
GEOLOGICAL SURVEY

SUNDRY NOTICES AND REPORTS ON WELLS

(Do not use this form for proposals to drill or to deepen or plug back to a different reservoir. Use Form 9-331-C for such proposals.)

1. oil ☐ well gas ☒ well other ☐

2. NAME OF OPERATOR
M. J. BRANNON

3. ADDRESS OF OPERATOR c/o Walsh Engr. & Prod. Corp.
P.O. Drawer 419, Farmington, N.M. 87499

4. LOCATION OF WELL (REPORT LOCATION CLEARLY. See space 17 below.)

AT SURFACE: 1830'FNL, 1840'FEL

AT TOP PROD. INTERVAL: Same

AT TOTAL DEPTH: Same

16. CHECK APPROPRIATE BOX TO INDICATE NATURE OF NOTICE, REPORT, OR OTHER DATA

REQUEST FOR APPROVAL TO:

TEST WATER SHUT-OFF ☐
FRACTURE TREAT ☐
SHOOT OR ACIDIZE ☐
REPAIR WELL ☐
PULL OR ALTER CASING ☐
MULTIPLE COMPLETE ☐
CHANGE ZONES ☐
ABANDON* ☐

(other) See Below

SUBSEQUENT REPORT OF:

☐
☐
☐
☐
☐
☐
☐
☐
☐
☐

RECEIVED

FEB 04 1985

BUREAU OF LAND MANAGEMENT
FARMINGTON RESOURCE AREA

(NOTE: Report results of multiple completion or zone change on Form 9-330.)

17. DESCRIBE PROPOSED OR COMPLETED OPERATIONS (Clearly state all pertinent details, and give pertinent dates, including estimated date of starting any proposed work. If well is directionally drilled, give subsurface locations and measured and true vertical depths for all markers and zones pertinent to this work.)*

Well location plat submitted to indicate correct leases within dedicated acreage.

Subsurface Safety Valve: Manu. and Type _____

Set @ _____ Ft.

FOR: M. J. BRANNON

18. I hereby certify that the foregoing is true and correct.

SIGNED EWELL N. WALSH, PE

TITLE Walsh Engr. & Production Corp.

DATE

ACCEPTED FOR RECORD

(This space for Federal or State office use)

APPROVED BY _____

TITLE _____

DATE

CONDITIONS OF APPROVAL, IF ANY:

FARMINGTON RESOURCE AREA

BY _____

*See Instructions on Reverse Side

NMOC

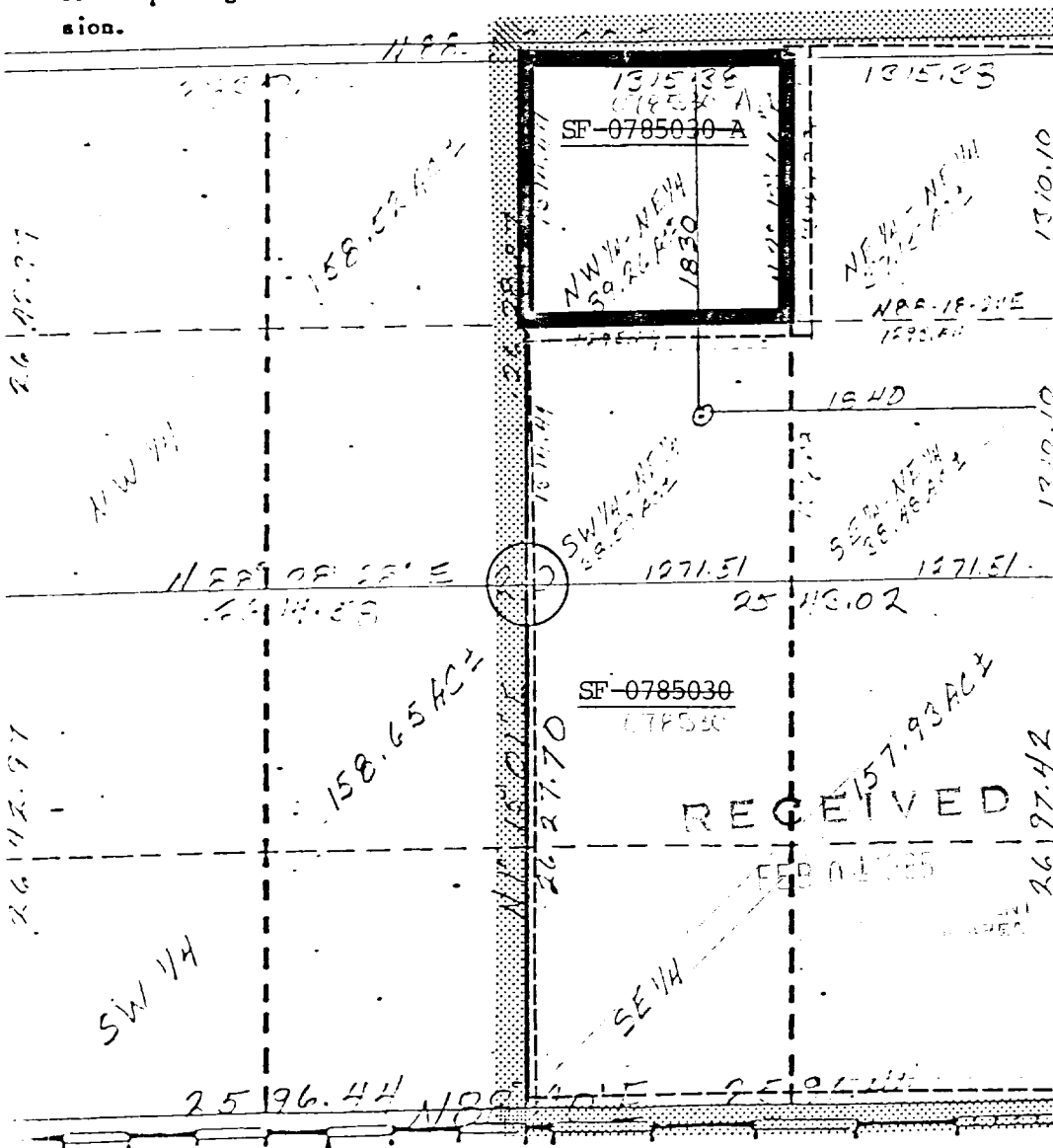
Superior L-121
Effective 1-1-63

Operator										Lease										Well No.																			
M. J. BRANNON										FED 20										1-E																			
Well Letter					Section					Township					Range					County																			
G					20					25 NORTH					9 WEST					SAN JUAN																			
Actual Footage Location of Wells																																							
1830										feet from the NORTH line and										1840 feet from the EAST line																			
Ground Level Elev.										Producing Formation										Pool										Dedicated Acreage:									
-6678										Dakota										Basin Dakota										320 Acres									
near GCD																																							

- ☒ Yes ☐ No If answer is "yes," type of consolidation Communitization Agreement
14-08-0001-7340 Dated 6/21/60

If answer is "no," list the owners and tract descriptions which have actually been consolidated. (Use reverse side of this form if necessary.)

No allowable will be assigned to the well until all interests have been consolidated (by communitization, unitization, forced-pooling, or otherwise) or until a non-standard unit, eliminating such interests, has been approved by the Commission.



I hereby certify that the Information contained herein is true and complete to the best of my knowledge and belief.
FOR: M. J. BRANNON

FOR: M. J. BRANNON

FOR: M. J. BRANNON

ORIGINALS

Name **EWE N WALSH**
Ewell N. Walsh, P.E.

Position
President

Walsh Engr. & Prod. Corp.

Date 2/1/85

I hereby certify that the well location shown on this plat is plotted from field notes of actual surveys made by me or under my supervision, and that the same is true and correct to the best of my knowledge and belief.

Date Surveyed
JANUARY 5, 1985
Registered Professional Engineer
and/or Land Surveyor

George R. Tompkins

Certificate No.
7259