

UNITED STATES
DEPARTMENT OF THE INTERIOR
GEOLOGICAL SURVEY

APPLICATION FOR PERMIT TO DRILL, DEEPEN, OR PLUG BACK

1a. TYPE OF WORK

DRILL ☒DEEPEN ☐PLUG BACK ☐

b. TYPE OF WELL

OIL
WELL ☐GAS
WELL ☒OTHER ☐SINGLE
ZONE ☒MULTIPLE
ZONE ☐

2. NAME OF OPERATOR

M. J. BRANNON

3. ADDRESS OF OPERATOR c/o Walsh Engr. & Prod. Corp.

P.O. Drawer 419 Farmington, N.M. 87499

4. LOCATION OF WELL (Report location clearly and in accordance with any State requirements.)

At surface

1490' FSL, 790' FWL

At proposed prod. zone

Same

14. DISTANCE IN MILES AND DIRECTION FROM NEAREST TOWN OR OFFICE AND MANAGEMENT

22 miles South of Bloomfield, New Mexico

15. DISTANCE FROM PROPOSED*

LOCATION TO NEAREST

PROPERTY OR LEASE LINE, FT.

(Also to nearest drlg. unit line, if any)

790'

16. NO. OF ACRES IN LEASE

2521.02'

17. NO. OF ACRES ASSIGNED

TO THIS WELL

W/ 320

18. DISTANCE FROM PROPOSED LOCATION*

TO NEAREST WELL, DRILLING, COMPLETED,

OR APPLIED FOR, ON THIS LEASE, FT.

1940'

19. PROPOSED DEPTH

6450'

20. ROTARY OR CABLE TOOLS

Rotary

21. ELEVATIONS (Show whether DF, RT, GR, etc.)

6712' G.L.

DRILLING OPERATIONS AUTHORIZED ARE

22. APPROX. DATE WORK WILL START*

2/10/85

23.

SUBJECT TO COMPLIANCE WITH ATTACHED

PROPOSED CASING AND CEMENTING PROGRAM
"GENERAL REQUIREMENTS"This action is subject to administrative
appeal pursuant to 30 CFR 2004

SIZE OF HOLE	SIZE OF CASING	WEIGHT PER FOOT	SETTING DEPTH	
12-1/4"	8-5/8"	24.0	250'	270 cu. ft.
7-7/8"	4-1/2"	10.50	6450'	2040 cu. ft.

All producing intervals in the Dakota Formation will be perforated and stimulated as necessary.

EXHIBITS:

"A" Location & Elevation Plat

"B" Ten Point Compliance Program

"C" Blowout Preventer Diagram

"D" Multi-Point Requirements for APD

"E" Access Road to Location

"F" Radius Map of Field

"G" Drill Rig Layout

"H" Fracturing Program Layout

"I" Location Profile

The gas from this well is committed.

The W/2, Section 28 is dedicated to this well.

IN ABOVE SPACE DESCRIBE PROPOSED PROGRAM: If proposal is to deepen or plug back, give data on present production and proposed new productive zone. If proposal is to drill or deepen directionally, give pertinent data on subsurface locations and measured and true vertical depths. Give blowout preventer program, if any.

24. FOR: M. J. BRANNON

ORIGINAL SIGNED BY
EWELL N. WALSHWalsh Engineering
& Prod. Corp.

SIGNED

Ewell N. Walsh, P.E. President

(This space for Federal or State office use)

PERMIT NO. _____

APPROVAL DATE _____

APPROVED BY _____

TITLE _____

CONDITIONS OF APPROVAL, IF ANY:

*See Instructions On Reverse Side

RECEIVED
JAN 31 1985
OIL CON. DIV.
DIST. 3

DATE 1/9/85
APPROVED
AS AMENDED
JAN 28 1985
Robert Moore
AREA MANAGER
FARMINGTON RESOURCE AREA

Certificate No.
7259

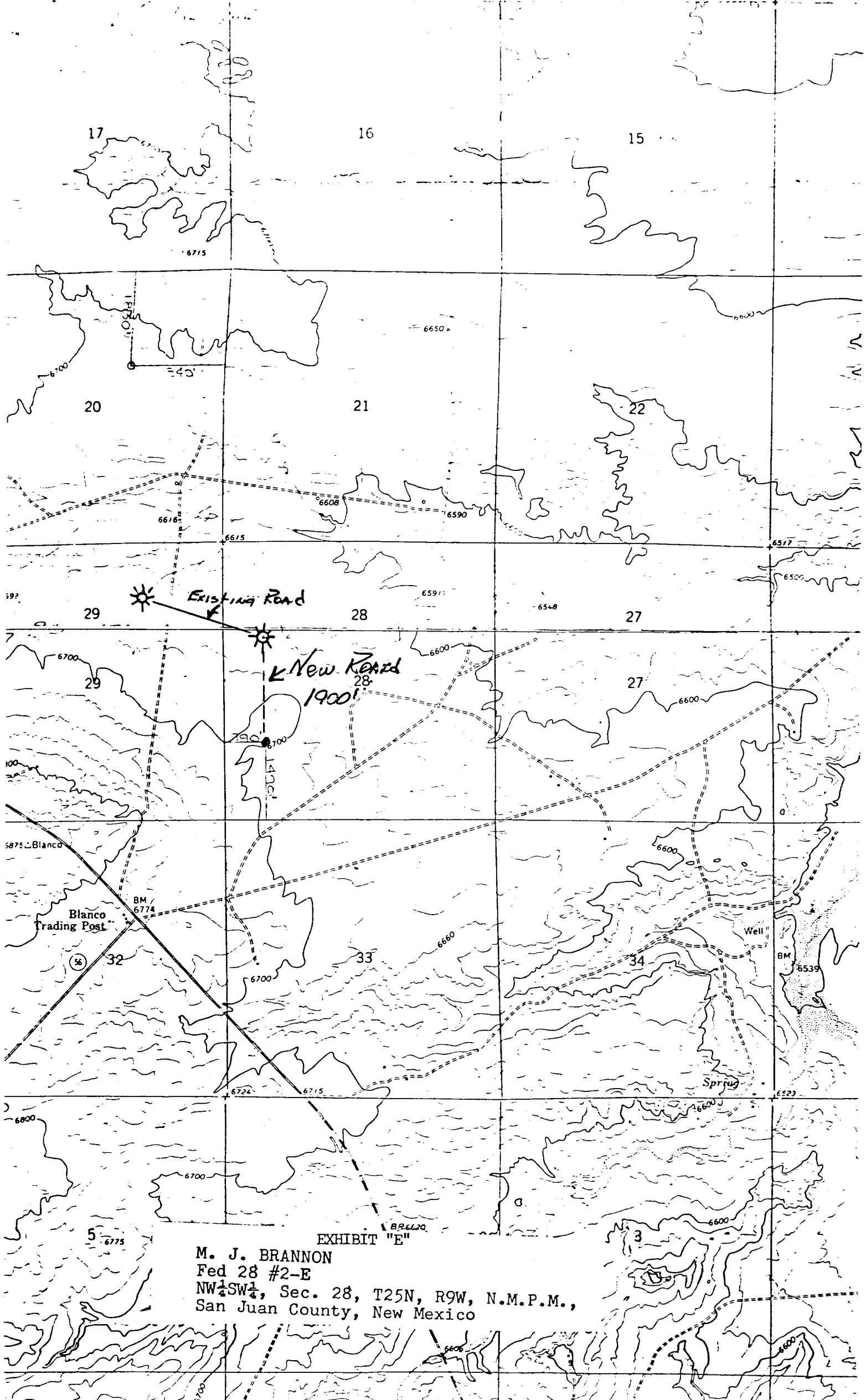


EXHIBIT "E"

M. J. BRANNON
Fed 28 #2-E
NW $\frac{1}{4}$ SW $\frac{1}{4}$, Sec. 28, T25N, R9W, N.M.P.M.,
San Juan County, New Mexico