

Submit to Appropriate
District Office
State Lease - 6 copies
Fee Lease - 5 copies

State of New Mexico
Energy, Minerals and Natural Resources Department

Form C-101
Revised 1-1-89

OIL CONSERVATION DIVISION

DISTRICT I
P.O. Box 1980, Hobbs, NM 88240

DISTRICT II
P.O. Drawer DD, Artesia, NM 88210

DISTRICT III
1000 Rio Brazos Rd., Aztec, NM 87410

P.O. Box 2088
Santa Fe, New Mexico 87504-2088

API NO. (assigned by OCD on New Wells)

30-045-27572

5. Indicate Type of Lease

STATE ☒

FEE ☐

6. State Oil & Gas Lease No.

LG-2062

APPLICATION FOR PERMIT TO DRILL, DEEPEN, OR PLUG BACK

1a. Type of Work:

DRILL ☒

RE-ENTER ☐

DEEPEN ☐

PLUG BACK ☐

b. Type of Well:

OIL
WELL ☐

GAS
WELL ☒

OTHER ☐

SINGLE
ZONE ☒

MULTIPLE
ZONE ☐

7. Lease Name or Unit Agreement Name

Bisti Coal 2

2. Name of Operator

Hixon Development Company

8. Well No.

2

3. Address of Operator

P. O. Box 2810, Farmington, NM 87499

9. Pool name or Wildcat

Basin Fruitland Coal

4. Well Location

Unit Letter M : 875' Feet From The South Line and 975' Feet From The West Line

Section 2 Township 25N Range 12W NMPM San Juan County

10. Proposed Depth
1255'

11. Formation
Fruitland

12. Rotary or C.T.
Rotary

13. Elevations (Show whether DF, RT, GR, etc.)

6284' GLE

14. Kind & Status Plug. Bond

15. Drilling Contractor

Unknown

16. Approx. Date Work will start

January 20, 1990

17.

PROPOSED CASING AND CEMENT PROGRAM

SIZE OF HOLE	SIZE OF CASING	WEIGHT PER FOOT	SETTING DEPTH	SACKS OF CEMENT	EST. TOP
12-1/4"	8-5/8"	24#	110'	60 sks (1.18 ft ³ to surface per sk)	
6-1/4"	4-1/2"	10.5#	1275' 1255'	140 sks	to surface

(75 sks - 2.06 ft³/sk)

(65 sks - 1.18 ft³/sk) 5/320

It is proposed to drill the subject Basin Fruitland Coal well. It will be evaluated on the basis of open hole logs. A BOP will be used during drilling operations.

APPROVAL EXPIRES 7-18-90
UNLESS DRILLING IS COMMENCED.
SPUD NOTICE MUST BE SUBMITTED
WITHIN 10 DAYS.

RECEIVED
JAN 17 1990
OIL CON. DIV.
DIST. 3

IN ABOVE SPACE DESCRIBE PROPOSED PROGRAM: IF PROPOSAL IS TO DEEPEN OR PLUG BACK, GIVE DATA ON PRESENT PRODUCTIVE ZONE AND PROPOSED NEW PRODUCTIVE ZONE. GIVE BLOWOUT PREVENTER PROGRAM, IF ANY.

I hereby certify that the information above is true and complete to the best of my knowledge and belief.

SIGNATURE John C. Corbett TITLE Vice President-Exploration DATE January 16, 1990

TYPE OR PRINT NAME John C. Corbett

TELEPHONE NO. 326-3325

(This space for State Use)

APPROVED BY Emmie Bunch DEPUTY OIL & GAS INSPECTOR, DIST. #3 DATE JAN 18 1990

CONDITIONS OF APPROVAL, IF ANY:

Hold 2-10-90 for proof change on 3 WAW FT-PC wells in section 2

Submit to Appropriate
District Office
State Lease - 4 copies
Fee Lease - 3 copies

State of New Mexico
Energy, Minerals and Natural Resources Department

Form C-102
Revised 1-1-89

OIL CONSERVATION DIVISION

P.O. Box 2088
Santa Fe, New Mexico 87504-2088

DISTRICT I
P.O. Box 1980, Hobbs, NM 88240

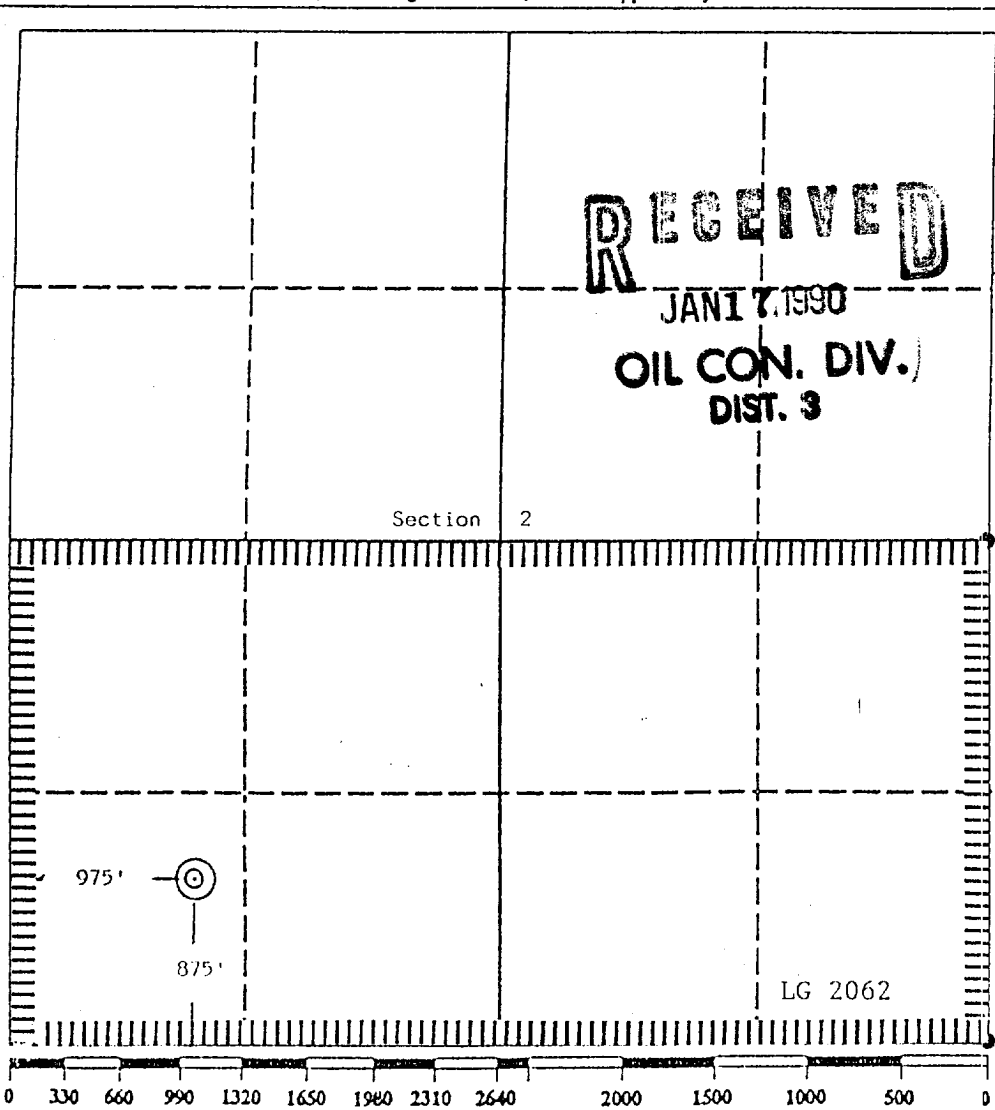
DISTRICT II
P.O. Drawer DD, Artesia, NM 88210

DISTRICT III
1000 Rio Brazos Rd., Aztec, NM 87410

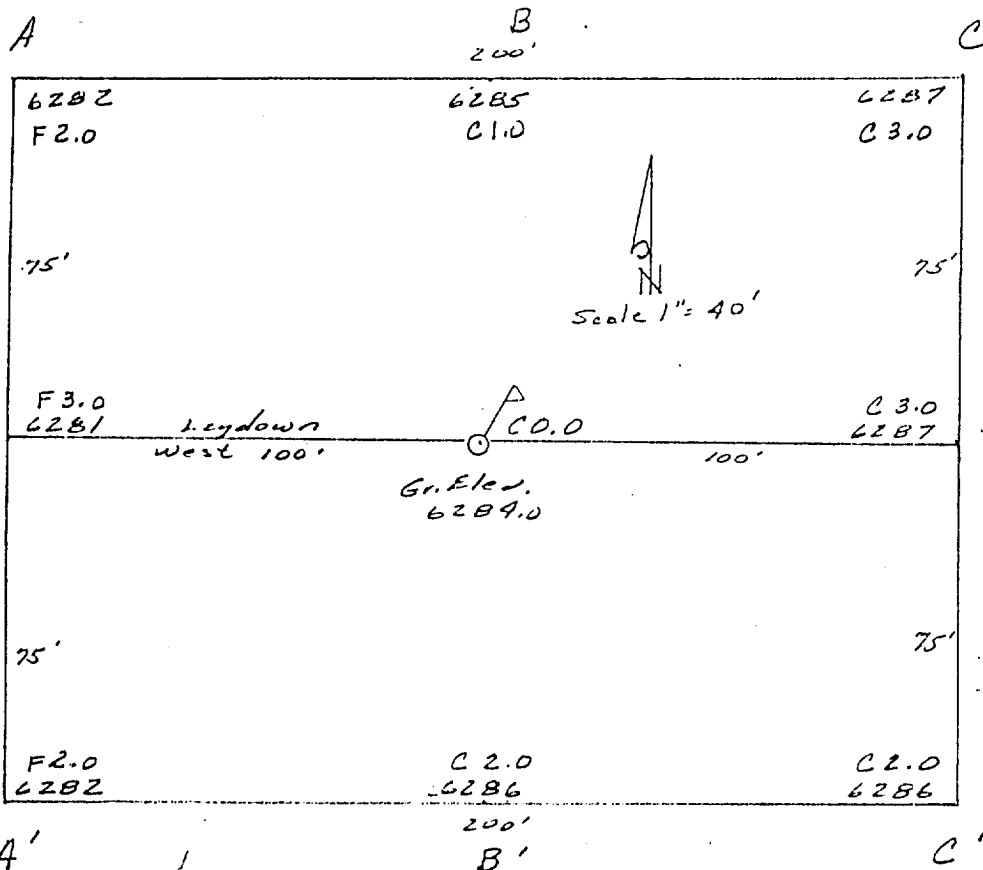
WELL LOCATION AND ACREAGE DEDICATION PLAT

All Distances must be from the outer boundaries of the section

Operator Hixon Development Company		Lease Bisti Coal 2		Well No. 2
Unit Letter M	Section 2	Township 25 North	Range 12 West	County San Juan
Actual Footage Location of Well: 875 feet from the South line and 975 feet from the West line				
Ground level Elev. 6284	Producing Formation Fruitland	Pool Basin Fruitland Coal	Dedicated Acreage: 320 Acres	
<p>1. Outline the acreage dedicated to the subject well by colored pencil or hatchure marks on the plat below.</p> <p>2. If more than one lease is dedicated to the well, outline each and identify the ownership thereof (both as to working interest and royalty).</p> <p>3. If more than one lease of different ownership is dedicated to the well, have the interest of all owners been consolidated by communitization, unitization, force-pooling, etc.? <input type="checkbox"/> Yes <input type="checkbox"/> No If answer is "yes" type of consolidation _____</p> <p>If answer is "no" list the owners and tract descriptions which have actually been consolidated. (Use reverse side of this form if necessary.) _____</p> <p>No allowable will be assigned to the well until all interests have been consolidated (by communitization, unitization, forced-pooling, or otherwise) or until a non-standard unit, eliminating such interest, has been approved by the Division.</p>				



OPERATOR CERTIFICATION I hereby certify that the information contained herein is true and complete to the best of my knowledge and belief.	
Signature <i>John C. Corbett</i>	Printed Name John C. Corbett
Position Vice President-Exploration Company	
Company Hixon Development Company	
Date January 10, 1990	
SURVEYOR CERTIFICATION I hereby certify that the well location shown on this plat was plotted from field notes of actual surveys made by me or under my supervision, and that the same is true and correct to the best of my knowledge and belief.	
Date Surveyed January 4, 1990	
Signature & Seal of Professional Surveyor <i>Edgar L. Risenhoover</i> Edgar L. Risenhoover REGISTERED LAND SURVEYOR NEW MEXICO 1979	



Hixon Development Company

OPERATOR

Bisti Coal 2 #2

WELL NAME & NO.

875' F/SL 975' F/WL

FOOTAGES

2 25N 12W

SEC. TWP. RGE.

San Juan, NM

COUNTY

January 4, 1990

DATE

6290					
6280					FG 6284

Horiz. 1" =

Vert. 1" = 30'

6290					
6280					FG 6284

6290					
6280					FG 6284