

UNITED STATES  
DEPARTMENT OF THE INTERIOR  
BUREAU OF LAND MANAGEMENT

APPLICATION FOR PERMIT TO DRILL, DEEPEN, OR PLUG BACK

1a. TYPE OF WORK  
 DRILL  DEEPEN  PLUG BACK

b. TYPE OF WELL  
 OIL WELL  GAS WELL  OTHER  SINGLE ZONE  MULTIPLE ZONE

2. NAME OF OPERATOR  
 Hixon Development Company

3. ADDRESS OF OPERATOR  
 P. O. Box 2810, Farmington, New Mexico 87401

4. LOCATION OF WELL (Report location clearly and in accordance with any State requirements.\*)  
 At surface  
 1870' FSL and 1800' FWL  
 At proposed prod. zone  
 Section 7, T25N, R11W, NMPM

14. DISTANCE IN MILES AND DIRECTION FROM NEAREST TOWN OR POST OFFICE\*  
 23 miles southeast of Farmington, NM

15. DISTANCE FROM PROPOSED\* LOCATION TO NEAREST PROPERTY OR LEASE LINE, FT. (Also to nearest drlg. unit line, if any)  
 1800'

16. NO. OF ACRES IN LEASE  
 1362.9

17. NO. OF ACRES ASSIGNED TO THIS WELL  
 w/ 320.26

18. DISTANCE FROM PROPOSED LOCATION\* TO NEAREST WELL, DRILLING, COMPLETED, OR APPLIED FOR, ON THIS LEASE, FT.  
 1200'

19. PROPOSED DEPTH  
 1400'

20. ROTARY OR CABLE TOOLS  
 Rotary

21. ELEVATIONS (Show whether DF, RT, GR, etc.)  
 6352' GLE

22. APPROX. DATE WORK WILL START\*  
 February 20, 1990

5. LEASE DESIGNATION AND SERIAL NO.  
 SF-078063

6. IF INDIAN, ALLOTTEE OR TRIBE NAME

7. UNIT AGREEMENT NAME  
 Carson Unit

8. FARM OR LEASE NAME  
 Carson Unit 323

9. WELL NO.  
 323-7

10. FIELD AND POOL, OR WILDCAT  
 Basin Fruitland Coal

11. SEC., T., R., M., OR BLK. AND SURVEY OR AREA  
 Sec 7, T25N, R11W

12. COUNTY OR PARISH 13. STATE  
 San Juan New Mexico

PROPOSED CASING AND CEMENTING PROGRAM

SIZE OF HOLE	SIZE OF CASING	WEIGHT PER FOOT	SETTING DEPTH	QUANTITY OF CEMENT
8-3/4"	7"	20#	110'	60 sks (1.18 ft <sup>3</sup> /sk) cmt to surface
6-1/4"	4-1/2"	10.5#	1400'	165 sks cmt to surface (85 sks - 2.06 ft <sup>3</sup> /sk) (80 sks - 1.18 ft <sup>3</sup> /sk)

DRILLING OPERATIONS AUTHORIZED ARE  
 SUBJECT TO COMPLIANCE WITH ATTACHED  
 GENERAL REQUIREMENTS

It is proposed to drill the subject Basin Fruitland Coal Well. It will be evaluated on the basis of open hole logs. Please see attached Onshore Oil and Gas Order No. 1 data.

**RECEIVED**  
 MAR 16 1990  
 OIL CON. DIV.  
 DIST. 3

IN ABOVE SPACE DESCRIBE PROPOSED PROGRAM: If proposal is to deepen or plug back, give data on present productive zone and proposed new productive zone. If proposal is to drill or deepen directionally, give pertinent data on subsurface locations and measured and true vertical depths. Give blowout preventer program, if any.

24. SIGNED John C. Corbett TITLE Vice President-Exploration DATE January 22, 1990  
 (This space for Federal or State office use)

PERMIT NO. \_\_\_\_\_ APPROVAL DATE \_\_\_\_\_

**APPROVED  
 AS AMENDED**

APPROVED BY \_\_\_\_\_ TITLE \_\_\_\_\_  
 CONDITIONS OF APPROVAL, IF ANY:

*Handwritten initials*

NMOCD

MAR 15 1990  
*Handwritten signature*  
 AREA MANAGER

\*See Instructions On Reverse Side

OFFICE OF THE  
DIRECTOR OF THE  
DEPARTMENT OF  
CORRECTIONS  
STATE OF CALIFORNIA  
SAN FRANCISCO  
CALIFORNIA

Submit to Appropriate District Office  
 State Lease - 4 copies  
 Fee Lease - 3 copies

State of New Mexico  
 Energy, Minerals and Natural Resources Department

Form C-102  
 Revised 1-1-89

**OIL CONSERVATION DIVISION**

P.O. Box 2088  
 Santa Fe, New Mexico 87504-2088

**DISTRICT I**  
 P.O. Box 1980, Hobbs, NM 88240

**DISTRICT II**  
 P.O. Drawer DD, Artesia, NM 88210

**DISTRICT III**  
 1000 Rio Brazos Rd., Aztec, NM 87410

**WELL LOCATION AND ACREAGE DEDICATION PLAT**

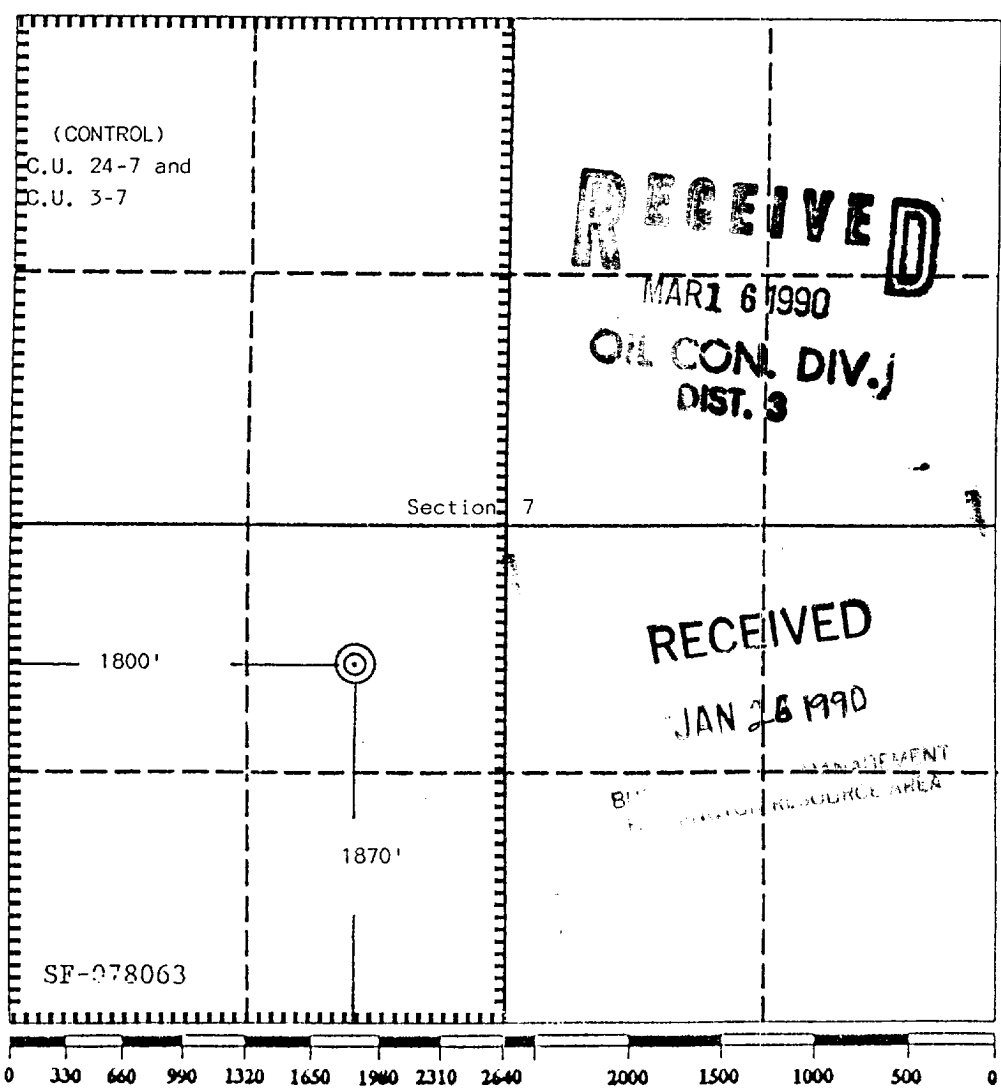
All Distances must be from the outer boundaries of the section

Operator Hixon Development Company		Lease Carson Unit <b>323</b>		Well No. <b>323-7</b>
Unit Letter K	Section 7	Township 25 North	Range 11 West	County San Juan

Actual Footage Location of Well:  
 1870 feet from the South line and 1800 feet from the West line

Ground level Elev. 6352	Producing Formation Fruitland	Pool Basin Fruitland Coal	Dedicated Acreage: 320.26 Acres
----------------------------	----------------------------------	------------------------------	------------------------------------

- Outline the acreage dedicated to the subject well by colored pencil or hatchure marks on the plat below.
- If more than one lease is dedicated to the well, outline each and identify the ownership thereof (both as to working interest and royalty).
- If more than one lease of different ownership is dedicated to the well, have the interest of all owners been consolidated by communitization, unitization, force-pooling, etc.?
  - Yes  No If answer is "yes" type of consolidation \_\_\_\_\_
 If answer is "no" list the owners and tract descriptions which have actually been consolidated. (Use reverse side of this form if necessary). \_\_\_\_\_  
 No allowable will be assigned to the well until all interests have been consolidated (by communitization, unitization, forced-pooling, or otherwise) or until a non-standard unit, eliminating such interest, has been approved by the Division.



**RECEIVED**  
 MAR 6 1990  
 OIL CON. DIV. J  
 DIST. 3

**RECEIVED**  
 JAN 28 1990

**OPERATOR CERTIFICATION**

I hereby certify that the information contained herein is true and complete to the best of my knowledge and belief.

Signature: *John C. Corbett*  
 Printed Name: John C. Corbett  
 Position: Vice President-Exploration  
 Company: Hixon Development Company  
 Date: January 16, 1990

**SURVEYOR CERTIFICATION**

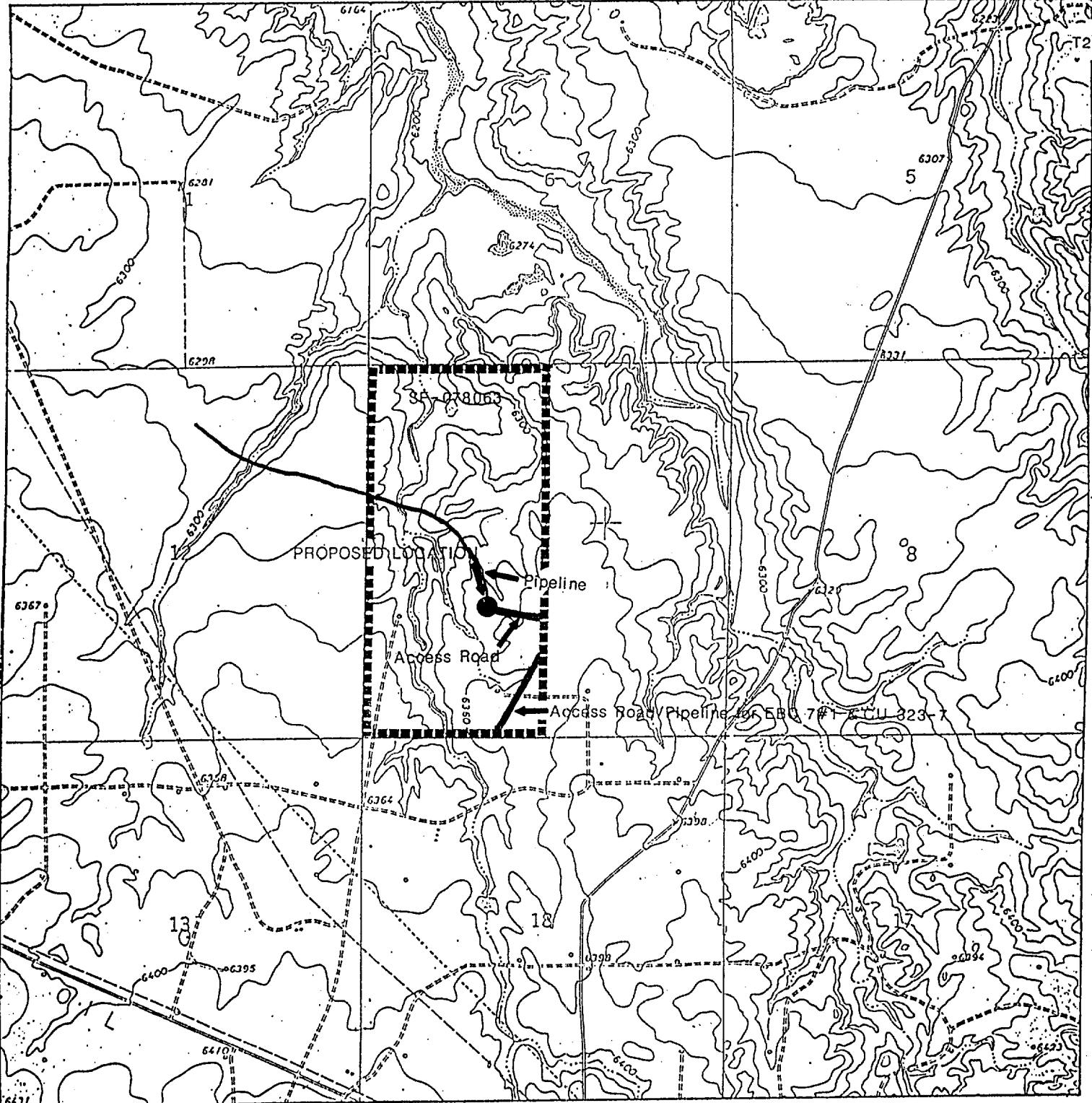
I hereby certify that the well location shown on this plat was plotted from field notes of actual surveys made by me or under my supervision, and that the same is true and correct to the best of my knowledge and belief.

Date Surveyed: January 9, 1990  
 Signature & Seal of Professional Surveyor: *Edgar L. Risenhoover*  
 Certificate No. 5979  
 Edgar L. Risenhoover, P.S.

R 11 W

T26N

T25N



HIXON DEVELOPMENT COMPANY

CARSON UNIT 323-7

1870' FSL 1800' FWL

SECTION 7, T25N, R11W

SAN JUAN COUNTY, NEW MEXICO