

UNITED STATES
DEPARTMENT OF THE INTERIOR
BUREAU OF LAND MANAGEMENT

APPLICATION FOR PERMIT TO DRILL, DEEPEN, OR PLUG BACK

1a. TYPE OF WORK

DRILL ☒

DEEPEN ☐

PLUG BACK ☐

b. TYPE OF WELL

OIL
WELL ☐

GAS
WELL ☒

OTHER

SINGLE
ZONE ☒

MULTIPLE
ZONE ☐

2. NAME OF OPERATOR

Hixon Development Company

3. ADDRESS OF OPERATOR

P. O. Box 2810, Farmington, NM 87499

4. LOCATION OF WELL (Report location clearly and in accordance with any State requirements.)*
At surface

790' FSL, 1850' FWL

At proposed prod. zone

Section 19, T25N, R11W

14. DISTANCE IN MILES AND DIRECTION FROM NEAREST TOWN OR POST OFFICE*

25 miles southeast of Farmington, NM

15. DISTANCE FROM PROPOSED*

LOCATION TO NEAREST
PROPERTY OR LEASE LINE, FT.
(Also to nearest drlg. unit line, if any)

1100'

16. NO. OF ACRES IN LEASE

1362.19

17. NO. OF ACRES ASSIGNED
TO THIS WELL

321.68
W/ 320

18. DISTANCE FROM PROPOSED LOCATION*

TO NEAREST WELL, DRILLING, COMPLETED,
OR APPLIED FOR, ON THIS LEASE, FT.

2000'

19. PROPOSED DEPTH

1300'

20. ROTARY OR CABLE TOOLS

Rotary

21. ELEVATIONS (Show whether DF, RT, GR, etc.)

6441' GLE

22. APPROX. DATE WORK WILL START*

March 7, 1990

This action is subject to technical and
propositional review pursuant to 43 CFR 3165.3
and appeal pursuant to 43 CFR 3165.4.

PROPOSED CASING AND CEMENTING PROGRAM

SIZE OF HOLE	SIZE OF CASING	WEIGHT PER FOOT	SETTING DEPTH	DRILLING OPERATIONS AUTHORIZED ARE SUBJECT TO QUANTITY OF CEMENT 60 sks (1.18 ft ³ /sk) cmt to surface 140 sks cmt to surface (75 sks - 2.06 ft ³ /sk) (65 sks - 1.18 ft ³ /sk)
8-3/4"	7"	20#	110'	
6-1/4"	4-1/2"	10.5#	1300'	

It is proposed to drill the subject Basin Fruitland Coal Well. It will be
evaluated on the basis of open hole logs. Please see attached Onshore Oil
and Gas Order No. 1 data.

RECEIVED
MAR 9 1990
OIL CON. DIV
DIST. 3

IN ABOVE SPACE DESCRIBE PROPOSED PROGRAM: If proposal is to deepen or plug back, give data on present productive zone and proposed new productive
zone. If proposal is to drill or deepen directionally, give pertinent data on subsurface locations and measured and true vertical depths. Give blowout
preventer program, if any.

24.

SIGNED

John C. Corbett

TITLE

Vice President-Exploration

DATE

February 6, 1990

(This space for Federal or State office use)

PERMIT NO.

APPROVAL DATE

APPROVED
AS AMENDED

APPROVED BY

TITLE

DATE

MAR 15 1990

CONDITIONS OF APPROVAL, IF ANY:

AREA MANAGER

*See Instructions On Reverse Side

100-443887-100

Q. 201-2

WFO 1000 1000 1000
C. 1000

OIL CONSERVATION DIVISION

P.O. Box 2088

Santa Fe, New Mexico 87504-2088

DISTRICT I

P.O. Box 1980, Hobbs, NM 88240

DISTRICT II

P.O. Drawer DD, Artesia, NM 88210

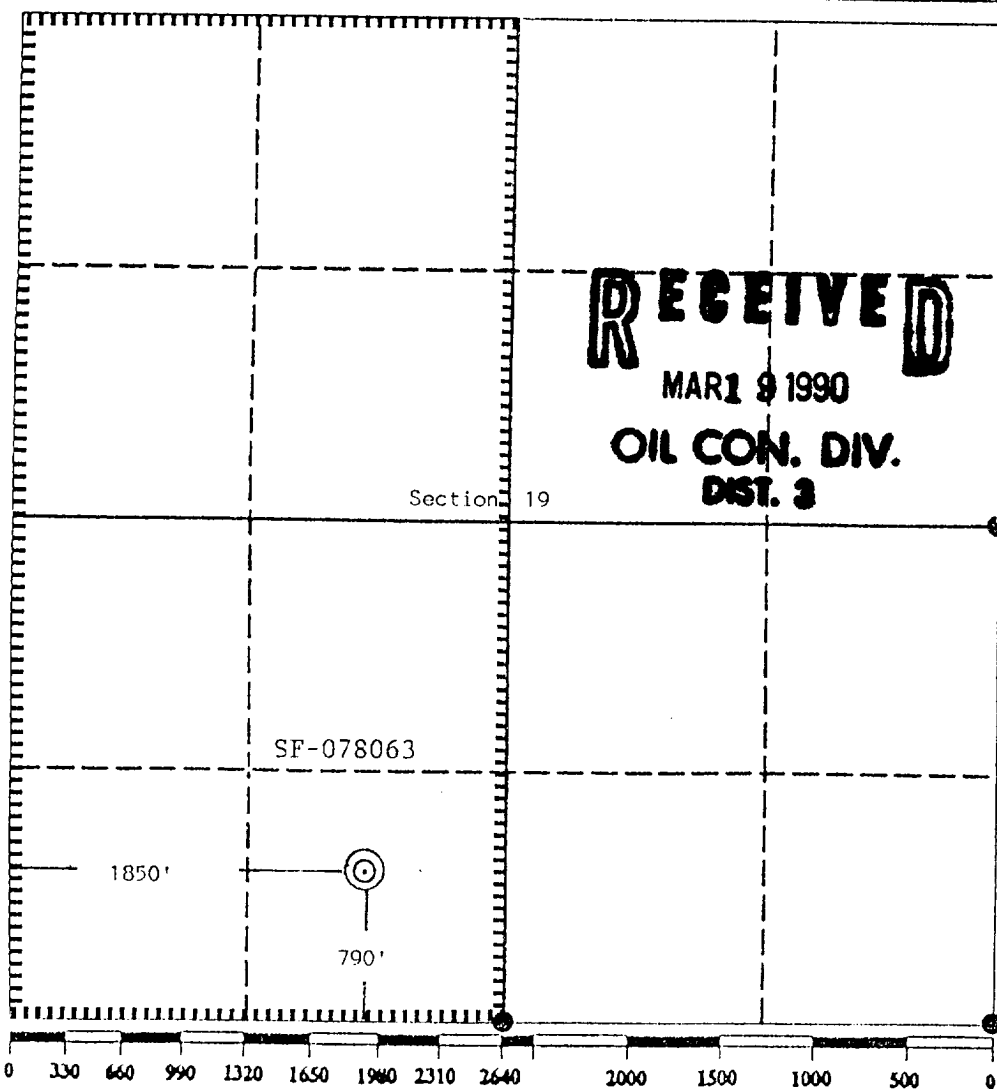
DISTRICT III

1000 Rio Brazos Rd., Aztec, NM 87410

WELL LOCATION AND ACREAGE DEDICATION PLAT

All Distances must be from the outer boundaries of the section

Operator Hixon Development Company			Lease Carson Unit 324		Well No. 324-19
Unit Letter N	Section 19	Township 25 North	Range 11 West	County San Juan	
Actual Footage Location of Well: 790 feet from the South line and 1850 feet from the West line					
Ground level Elev. 6441	Producing Formation Fruitland	Pool Basin Fruitland Coal	Dedicated Acreage: 320 321.68 Acres		
<p>1. Outline the acreage dedicated to the subject well by colored pencil or hatchure marks on the plat below.</p> <p>2. If more than one lease is dedicated to the well, outline each and identify the ownership thereof (both as to working interest and royalty).</p> <p>3. If more than one lease of different ownership is dedicated to the well, have the interest of all owners been consolidated by communitization, unitization, force-pooling, etc.? <input type="checkbox"/> Yes <input type="checkbox"/> No If answer is "yes" type of consolidation _____ If answer is "no" list the owners and tract descriptions which have actually been consolidated. (Use reverse side of this form if necessary.) _____ No allowable will be assigned to the well until all interests have been consolidated (by communitization, unitization, forced-pooling, or otherwise) or until a non-standard unit, eliminating such interest, has been approved by the Division.</p>					



OPERATOR CERTIFICATION

I hereby certify that the information contained herein is true and complete to the best of my knowledge and belief.

Signature

John C. Corbett

Printed Name

John C. Corbett

Position

Vice President-Exploration

Company

Hixon Development Company

Date

January 19, 1990

SURVEYOR CERTIFICATION

I hereby certify that the well location shown on this plat was plotted from field notes of actual surveys made by me or under my supervision, and that the same is true and correct to the best of my knowledge and belief.

Date Surveyed

January 15, 1990

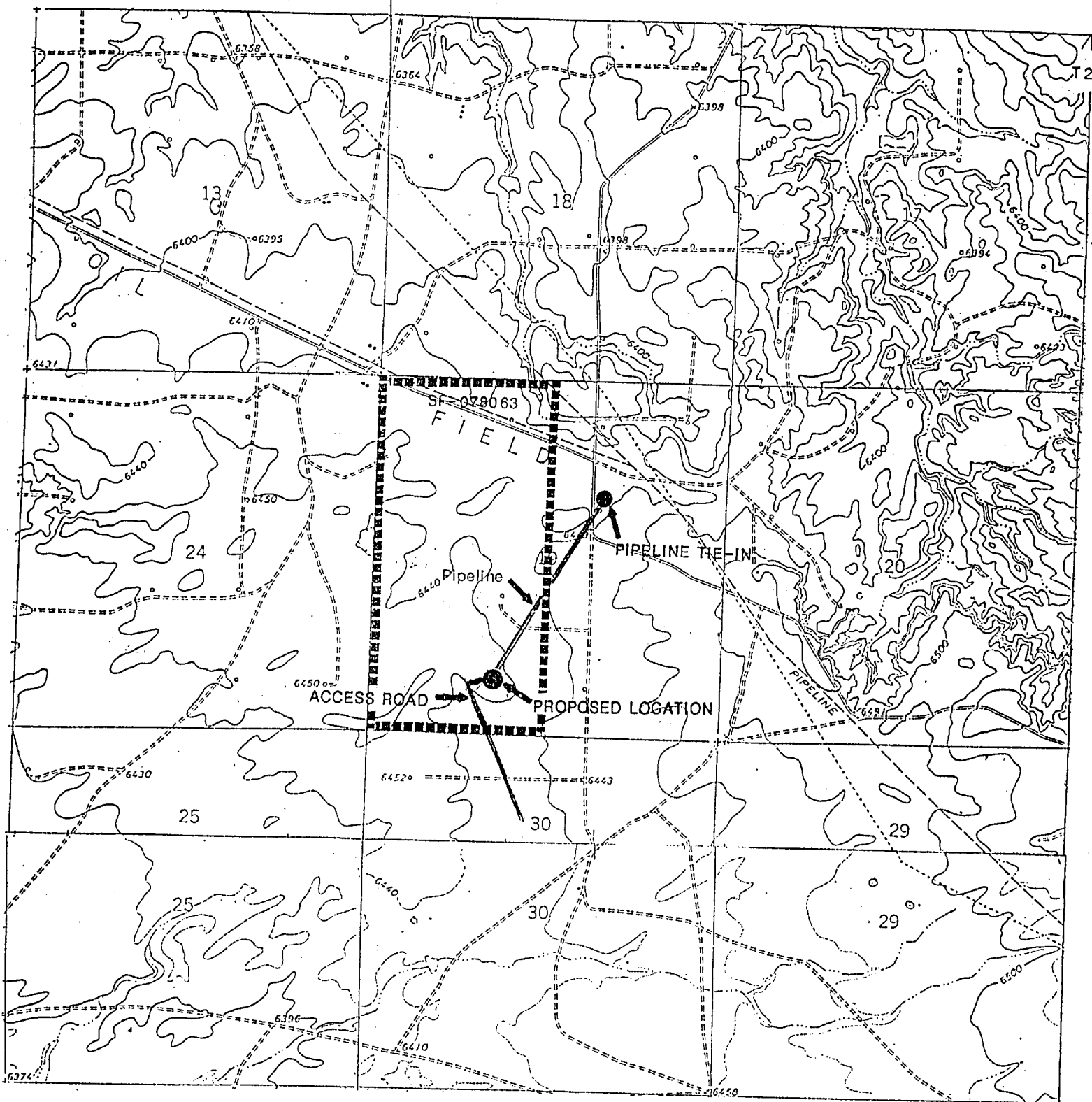
Signature & Seal of Professional Surveyor

Edgar L. Risenhoover
EDGAR L. RISENHOOVER
NEW MEXICO
15773
Certificate No. 5979
Edgar L. Risenhoover

03213630
DATE 1957
VIG 1450 113
C 1208

R12W R11W

T 25N



HIXON DEVELOPMENT COMPANY-

CARSON UNIT 324-19

790' FSL 1850' FWL

SECTION 19, T25N, R11W

SAN JUAN COUNTY, NEW MEXICO