

UNITED STATES
DEPARTMENT OF THE INTERIOR
BUREAU OF LAND MANAGEMENT

APPLICATION FOR PERMIT TO DRILL, DEEPEN, OR PLUG BACK

1a. TYPE OF WORK

DRILL ☒

90 JAN 26 DEEPEN ☒

PLUG BACK ☐

b. TYPE OF WELL

OIL
WELL ☐

GAS
WELL ☒

OTHER

SINGLE
ZONE ☒

MULTIPLE
ZONE ☐

2. NAME OF OPERATOR

Hixon Development Company

3. ADDRESS OF OPERATOR

P. O. Box 2810, Farmington, NM 87401

4. LOCATION OF WELL (Report location clearly and in accordance with any State requirements.)*

At surface

1990' FNL and 1650' FEL

At proposed prod. zone

Section 10, T25N, R11W, NMPM

14. DISTANCE IN MILES AND DIRECTION FROM NEAREST TOWN OR POST OFFICE*

22 miles southeast of Farmington, NM

15. DISTANCE FROM PROPOSED*

LOCATION TO NEAREST
PROPERTY OR LEASE LINE, FT.
(Also to nearest drlg. unit line, if any)

1650'

16. NO. OF ACRES IN LEASE

1000.00

18. DISTANCE FROM PROPOSED LOCATION*
TO NEAREST WELL, DRILLING, COMPLETED,
OR APPLIED FOR, ON THIS LEASE, FT.

940'

19. PROPOSED DEPTH

1300'

17. NO. OF ACRES ASSIGNED
TO THIS WELL

E/320

20. ROTARY OR CABLE TOOLS

Rotary

10. FIELD AND POOL, OR WILDCAT

Basin Fruitland Coal

11. SEC., T., R., M., OR BLK.
AND SURVEY OR AREA

Sec 10, T25N, R12W

12. COUNTY OR PARISH 13. STATE

San Juan

New Mexico

21. ELEVATIONS (Show whether DF, RT, GR, etc.)

6231' GLE

22. APPROX. DATE WORK WILL START*

February 20, 1990

This action is subject to technical and
procedural review pursuant to 43 CFR 3165.3
and appeal pursuant to 43 CFR 3165.4.

PROPOSED CASING AND CEMENTING PROGRAM

SIZE OF HOLE	SIZE OF CASING	WEIGHT PER FOOT	SETTING DEPTH	"GENERAL REQUIREMENTS"
8-3/4"	7"	20#	110'	60 sks (1.18 ft ³ /sk) cmt to surface
6-1/4"	4-1/2"	10.5#	1300'	140 sks cmt to surface (75 sks - 2.06 ft ³ /sk) (65 sks - 1.18 ft ³ /sk)

It is proposed to drill the subject Basin Fruitland Coal Well. It will be evaluated on the basis of open hole logs. Please see attached Onshore Oil and Gas Order No. 1 data.

RECEIVED
MAR 1 6 1990

OIL CON. DIV.
DIST. 3

IN ABOVE SPACE DESCRIBE PROPOSED PROGRAM: If proposal is to deepen or plug back, give data on present productive zone and proposed new productive zone. If proposal is to drill or deepen directionally, give pertinent data on subsurface locations and measured and true vertical depths. Give blowout preventer program, if any.

24.

SIGNED

John C. Corbett
John C. Corbett

TITLE Vice President-Exploration

22, 1990

(This space for Federal or State office use)

APPROVED
AS AMENDED

PERMIT NO.

APPROVAL DATE

MAR 08 1990

APPROVED BY

TITLE

CONDITIONS OF APPROVAL, IF ANY:

AREA MANAGER

*See Instructions On Reverse Side

Submit to Appropriate
District Office
State Lease - 4 copies
Fee Lease - 3 copies

State of New Mexico
Energy, Minerals and Natural Resources Department

Form C-102
Revised 1-1-89

OIL CONSERVATION DIVISION

P.O. Box 2088

Santa Fe, New Mexico 87504-2088

DISTRICT I
P.O. Box 1980, Hobbs, NM 88240

DISTRICT II
P.O. Drawer DD, Artesia, NM 88210

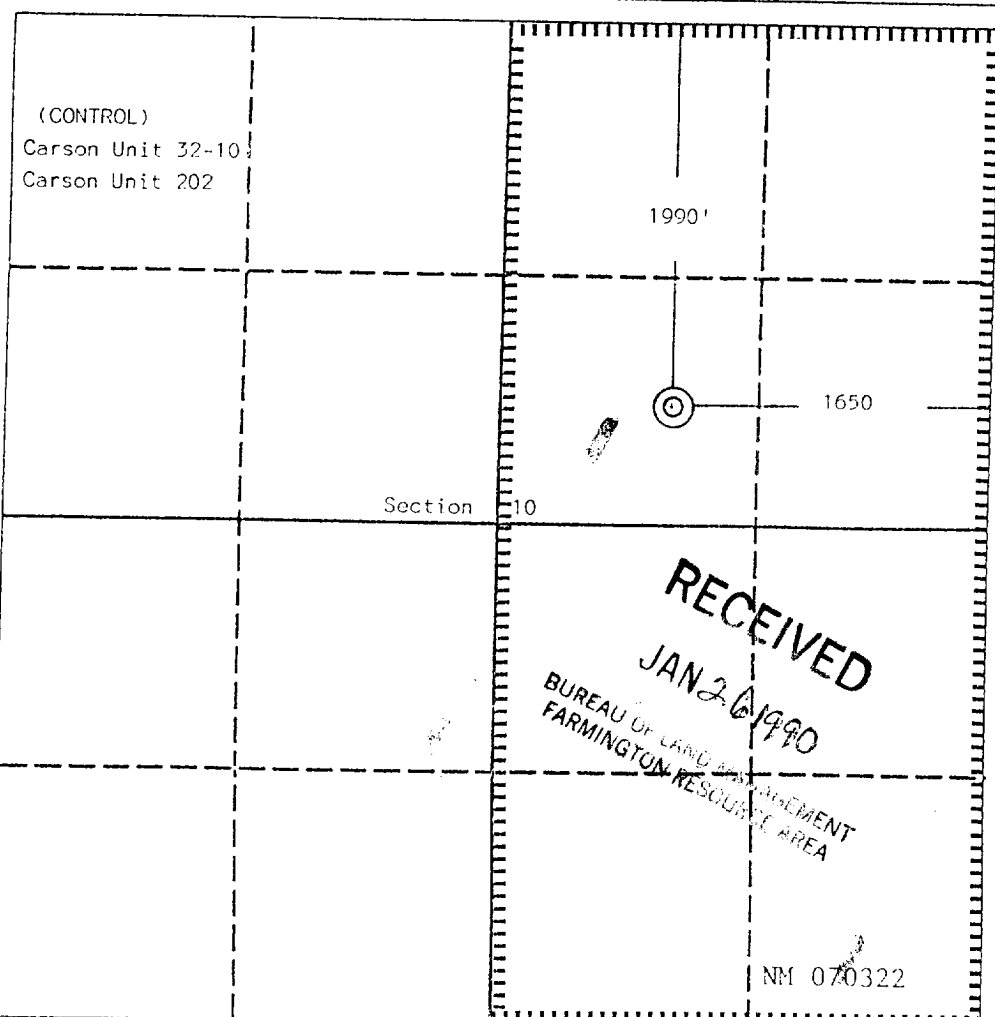
DISTRICT III
1000 Rio Brazos Rd., Aztec, NM 87410

WELL LOCATION AND ACREAGE DEDICATION PLAT

All Distances must be from the outer boundaries of the section

Operator Hixon Development Company			Lease Carson Unit 332		Well No. 332-10
Unit Letter G	Section 10	Township 25 North	Range 12 West	County San Juan	
Actual Footage Location of Well: 1990 feet from the North line and 1650 feet from the East line					
Ground level Elev. 6231	Producing Formation Fruitland		Pool Basin Fruitland Coal	Dedicated Acreage: 320 Acres	

1. Outline the acreage dedicated to the subject well by colored pencil or hatchure marks on the plat below.
2. If more than one lease is dedicated to the well, outline each and identify the ownership thereof (both as to working interest and royalty).
3. If more than one lease of different ownership is dedicated to the well, have the interest of all owners been consolidated by communitization, unitization, force-pooling, etc?
☐ Yes ☐ No If answer is "yes" type of consolidation _____
If answer is "no" list the owners and tract descriptions which have actually been consolidated. (Use reverse side of this form if necessary.) _____
No allowable will be assigned to the well until all interests have been consolidated (by communitization, unitization, forced-pooling, or otherwise) or until a non-standard unit, eliminating such interest, has been approved by the Division.



OPERATOR CERTIFICATION

I hereby certify that the information contained herein is true and complete to the best of my knowledge and belief.

Signature
John C. Corbett
Printed Name
John C. Corbett
Position
Vice President-Exploration
Company
Hixon Development Company
Date
January 10, 1990

SURVEYOR CERTIFICATION

I hereby certify that the well location shown on this plat was plotted from field notes of actual surveys made by me or under my supervision, and that the same is true and correct to the best of my knowledge and belief.

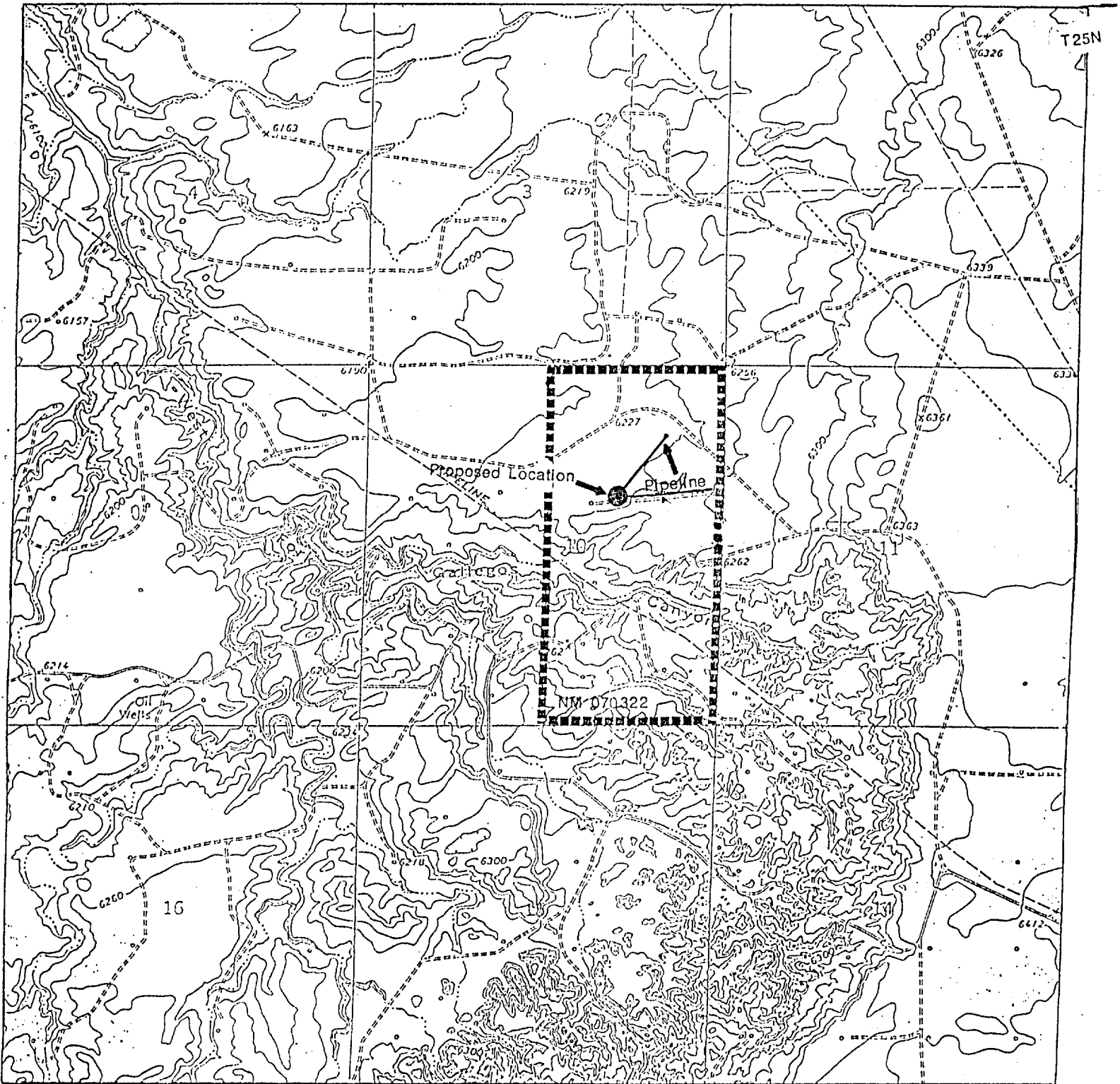
Date Surveyed
January 5, 1990

Signature & Seal of Professional Surveyor
Edgar L. Risenhoover
Certificate No. 5979
Edgar

R 12 W

T26N

T25N



HIXON DEVELOPMENT COMPANY

Carson Unit 332-10

1990' FNL 1650' FEL

Section 10, T25N, R12W

SAN JUAN COUNTY, NEW MEXICO