

UNITED STATES
DEPARTMENT OF THE INTERIOR
BUREAU OF LAND MANAGEMENT

SUBMIT IN TRIPLICATE*
(Other instructions on
reverse side)

30-045-27672
Form approved.
Budget Bureau No. 1004-0136
Expires August 31, 1985

APPLICATION FOR PERMIT TO DRILL, DEEPEN, OR PLUG BACK

1a. TYPE OF WORK

DRILL ☒

DEEPEN ☐

PLUG BACK ☐

b. TYPE OF WELL

OIL
WELL ☐

GAS
WELL ☒

OTHER

SINGLE
ZONE ☒

MULTIPLE
ZONE ☐

2. NAME OF OPERATOR

Hixon Development Company

3. ADDRESS OF OPERATOR

P. O. Box 2810, Farmington, NM 87401

4. LOCATION OF WELL (Report location clearly and in accordance with any State requirements.)*

At surface

790' FNL and 2510' FEL

At proposed prod. zone

Section 12, T25N, R12W, NMPM

14. DISTANCE IN MILES AND DIRECTION FROM NEAREST TOWN OR POST OFFICE*

22.5 miles southeast of Farmington, NM

10. DISTANCE FROM PROPOSED*

LOCATION TO NEAREST
PROPERTY OR LEASE LINE, FT.
(Also to nearest drlg. unit line, if any)

2510'

16. NO. OF ACRES IN LEASE

2559.60

17. NO. OF ACRES ASSIGNED
TO THIS WELL

320

18. DISTANCE FROM PROPOSED LOCATION*
TO NEAREST WELL, DRILLING, COMPLETED,
OR APPLIED FOR, ON THIS LEASE, FT.

3150'

19. PROPOSED DEPTH

1300'

20. ROTARY OR CABLE TOOL

Rotary

21. ELEVATIONS (Show whether DE, RT, GR, etc.)

6310' GLE

22. APPROX. DATE WORK WILL START*

February 20, 1990

PROPOSED CASING AND CEMENTING PROGRAM

SIZE OF HOLE	SIZE OF CASING	WEIGHT PER FOOT	SETTING DEPTH
8-3/4"	7"	20#	110'
6-1/4"	4-1/2"	10.5#	1300'

DRILLING OPERATIONS AUTHORIZED ARE
SUBJECT TO COMPLIANCE WITH ATTACHED

"GENERAL REQUIREMENTS"

60 sks (1.18 ft³/sk)
cmt to surface

140 sks cmt to surface
(75 sks - 2.06 ft³/sk)
(65 sks - 1.18 ft³/sk)

It is proposed to drill the subject Basin Fruitland Coal Well. It will be evaluated on the basis of open hole logs. Please see attached Onshore Oil and Gas Order No. 1 data.

RECEIVED
MAR 9 1990
OIL CON. DIV.
DIST. 3

IN ABOVE SPACE DESCRIBE PROPOSED PROGRAM: If proposal is to deepen or plug back, give data on present productive zone and proposed new productive zone. If proposal is to drill or deepen directionally, give pertinent data on subsurface locations and measured and true vertical depths. Give blowout preventer program, if any.

24.

SIGNED

John C. Corbett
John C. Corbett

TITLE

Vice President-Exploration DATE January 22, 1990

(This space for Federal or State office use)

APPROVED
AS AMENDED

PERMIT NO.

APPROVAL DATE

APPROVED BY

TITLE

CONDITIONS OF APPROVAL, IF ANY:

NMOCD

MAR 15 1990

AREA MANAGER

*See Instructions On Reverse Side

RECEIVED
MAY 19 1960
OIL CONT. DIV.
BAY 3

Submit to Appropriate
District Office
State Lease - 4 copies
Fee Lease - 3 copies

State of New Mexico
Energy, Minerals and Natural Resources Department

Form C-102
Revised 1-1-89

OIL CONSERVATION DIVISION

P.O. Box 2088
Santa Fe, New Mexico 87504-2088

RECEIVED

JAN 26 1990

DISTRICT I
P.O. Box 1980, Hobbs, NM 88240

DISTRICT II
P.O. Drawer DD, Artesia, NM 88210

DISTRICT III
1000 Rio Brazos Rd., Aztec, NM 87410

WELL LOCATION AND ACREAGE DEDICATION BUREAU OF LAND MANAGEMENT
SANTA FE RESOURCE AREA
All Distances must be from the outer boundaries of the section.

Operator Hixon Development Company			Lease Bisti Coal 12		Well No. 1
Unit Letter B	Section 12	Township 25 North	Range 12 West	County San Juan	
Actual Footage Location of Well: 790 feet from the North line and 2510 feet from the East line					
Ground level Elev. 6310	Producing Formation Fruitland		Pool Basin Fruitland Coal		Dedicated Acreage: 320 Acres

1. Outline the acreage dedicated to the subject well by colored pencil or hatchure marks on the plat below.

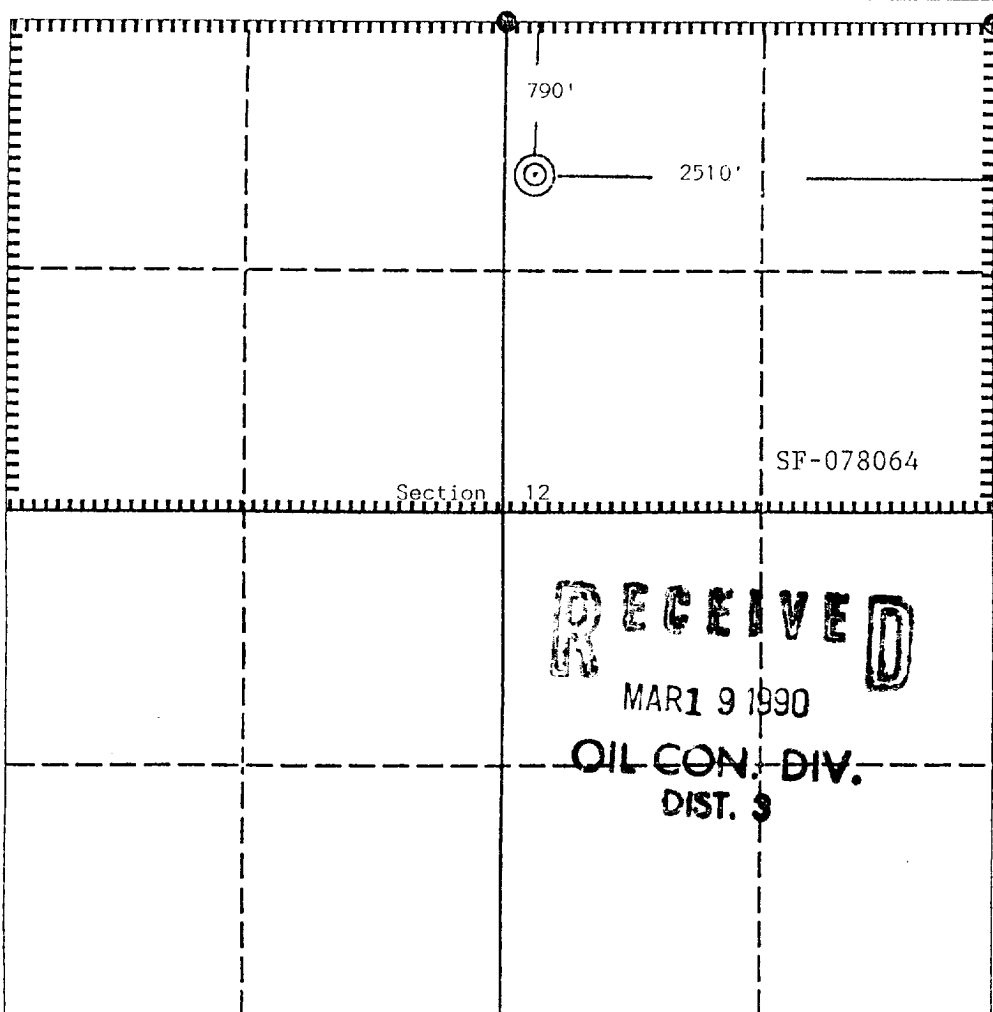
2. If more than one lease is dedicated to the well, outline each and identify the ownership thereof (both as to working interest and royalty).

3. If more than one lease of different ownership is dedicated to the well, have the interest of all owners been consolidated by communitization, unitization, force-pooling, etc.?

☐ Yes ☐ No If answer is "yes" type of consolidation _____

If answer is "no" list the owners and tract descriptions which have actually been consolidated. (Use reverse side of this form if necessary.) _____

No allowable will be assigned to the well until all interests have been consolidated (by communitization, unitization, forced-pooling, or otherwise) or until a non-standard unit, eliminating such interest, has been approved by the Division.



OPERATOR CERTIFICATION

I hereby certify that the information contained herein is true and complete to the best of my knowledge and belief.

Signature

John C. Corbett

Printed Name

John C. Corbett

Position

Vice President-Exploration
Company

Hixon Development Company

Date

January 19, 1990

SURVEYOR CERTIFICATION

I hereby certify that the well location shown on this plat was plotted from field notes of actual surveys made by me or under my supervision, and that the same is true and correct to the best of my knowledge and belief.

Date Surveyed

January 11, 1990

Signature & Seal of
Professional Surveyor

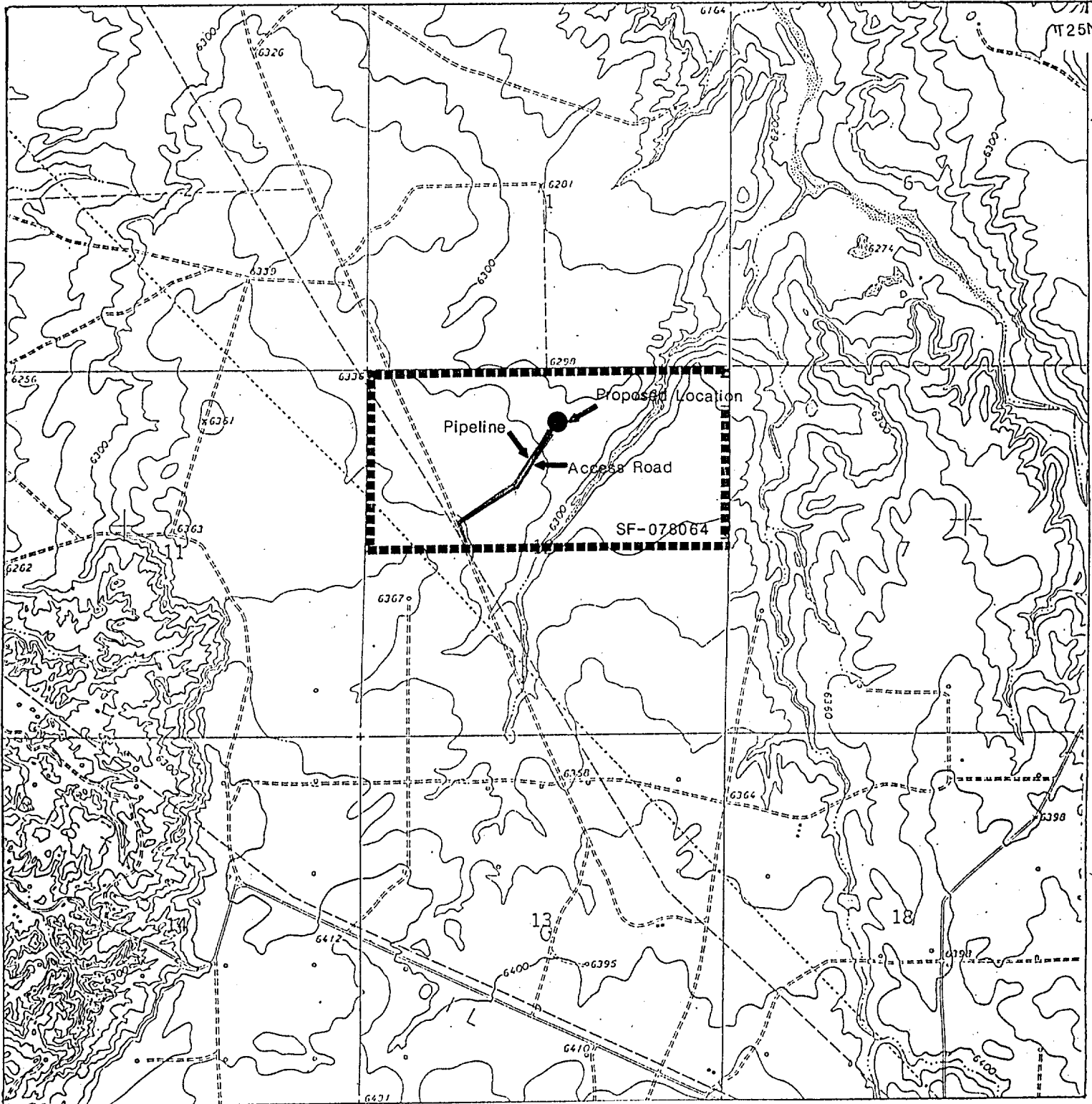
EDGAR L. RISENHOOVER
NEW MEXICO
Certificate No. 5979
Edgar L. Risenhoover

0 330 660 990 1320 1650 1980 2310 2640 2000 1500 1000 500 0

R 12 W

T26N

T25N



HIXON DEVELOPMENT COMPANY

Bisti Coal 12 # 1

790' FNL 2510' FEL

Section 12, T25N, R12W

SAN JUAN COUNTY, NEW MEXICO