

UNITED STATES  
DEPARTMENT OF THE INTERIOR  
BUREAU OF LAND MANAGEMENT

APPLICATION FOR PERMIT TO DRILL, DEEPEN, OR PLUG BACK

1a. TYPE OF WORK

DRILL ☒

DEEPEN ☐

PLUG BACK ☐

b. TYPE OF WELL

OIL  
WELL ☐

GAS  
WELL ☒

OTHER

SINGLE  
ZONE ☒

MULTIPLE  
ZONE ☐

2. NAME OF OPERATOR

Hixon Development Company

3. ADDRESS OF OPERATOR

P. O. Box 2810, Farmington, New Mexico 87499

4. LOCATION OF WELL (Report location clearly and in accordance with any State requirements.)\*

At surface

790' FSL, 1850' FWL

At proposed prod. zone

Section 25, T25N, R12W, NMPM

14. DISTANCE IN MILES AND DIRECTION FROM NEAREST TOWN OR POST OFFICE\*

25.5 miles southeast of Farmington, New Mexico

15. DISTANCE FROM PROPOSED\*

LOCATION TO NEAREST  
PROPERTY OR LEASE LINE, FT.  
(Also to nearest drlg. unit line, if any)

790'

16. NO. OF ACRES IN LEASE

640.00

17. NO. OF ACRES ASSIGNED  
TO THIS WELL

5/320

18. DISTANCE FROM PROPOSED LOCATION\*  
TO NEAREST WELL, DRILLING, COMPLETED,  
OR APPLIED FOR, ON THIS LEASE, FT.

505'

19. PROPOSED DEPTH

1200'

20. ROTARY OR CABLE TOOLS

Rotary

21. ELEVATIONS (Show whether DF, RT, GR, etc.)

6394' GLE

22. APPROX. DATE WORK WILL START\*

March 7, 1990

23. PROPOSED CASING AND CEMENTING PROGRAM

| SIZE OF HOLE | SIZE OF CASING | WEIGHT PER FOOT | SETTING DEPTH | QUANTITY OF CEMENT                  |
|--------------|----------------|-----------------|---------------|-------------------------------------|
| 8-3/4"       | 7"             | 20#             | 110'          | 60 sks (1.18 ft <sup>3</sup> /sk)   |
|              |                |                 |               | cmt to surface                      |
| 6-1/4"       | 4-1/2"         | 10.5#           | 1200'         | 125 sks cmt to surface              |
|              |                |                 |               | (75 sks - 2.06 ft <sup>3</sup> /sk) |
|              |                |                 |               | (50 sks - 1.18 ft <sup>3</sup> /sk) |

It is proposed to drill the subject Basin Fruitland Coal Well. It will be evaluated on the basis of open hole logs. Please see attached Onshore Oil and Gas Order No. 1 data.

RECEIVED

MAR 19 1990

OIL CON. DIV.  
DIST. 3

IN ABOVE SPACE DESCRIBE PROPOSED PROGRAM: If proposal is to deepen or plug back, give data on present productive zone and proposed new productive zone. If proposal is to drill or deepen directionally, give pertinent data on subsurface locations and measured and true vertical depths. Give blowout preventer program, if any.

24.

SIGNED

*John C. Corbett*  
John C. Corbett

TITLE Vice-President-Exploration

APPROVED  
DATE February 6, 1990

AS AMENDED

(This space for Federal or State office use)

PERMIT NO.

APPROVAL DATE

APPROVED BY

TITLE

CONDITIONS OF APPROVAL, IF ANY:

MAR 15 1990  
*John C. Corbett*  
AREA MANAGER

NMOCD

\*See Instructions On Reverse Side

RECEIVED  
MAY 19 1960  
OFFICE OF THE  
DIRECTOR  
U.S. AIR FORCE

Submit to Appropriate  
District Office  
State Lease - 4 copies  
Fee Lease - 3 copies

State of New Mexico  
Energy, Minerals and Natural Resources Department

Form C-102  
Revised 1-1-89

OIL CONSERVATION DIVISION

P.O. Box 2088  
Santa Fe, New Mexico 87504-2088

DISTRICT I  
P.O. Box 1980, Hobbs, NM 88240

DISTRICT II  
P.O. Drawer DD, Artesia, NM 88210

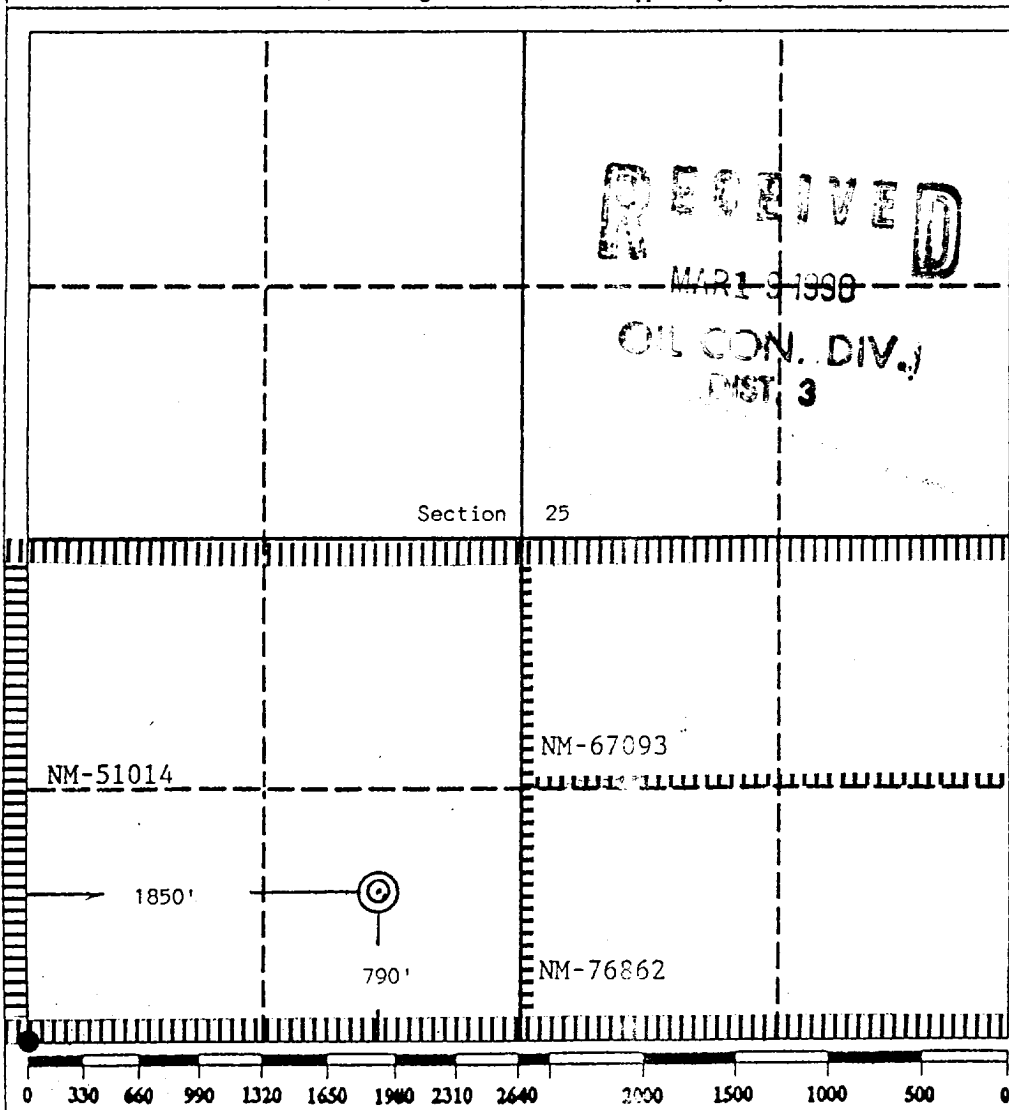
DISTRICT III  
1000 Rio Brazos Rd., Aztec, NM 87410

WELL LOCATION AND ACREAGE DEDICATION PLAT

All Distances must be from the outer boundaries of the section

|   |                                  |                      |                              |                                 |               |
|---|----------------------------------|----------------------|------------------------------|---------------------------------|---------------|
| Operator<br>Hixon Development Company   |                                  |                      | Lease<br>Bisti Coal 25       |                                 | Well No.<br>1 |
| Unit Letter<br>N  | Section<br>25                    | Township<br>25 North | Range<br>12 West             | County<br>San Juan              |               |
| Actual Footage Location of Well:<br>790 feet from the South line and 1850 feet from the West line |                                  |                      |                              |                                 |               |
| Ground level Elev.<br>6394  | Producing Formation<br>Fruitland |                      | Pool<br>Basin Fruitland Coal | Dedicated Acreage:<br>320 Acres |               |

- Outline the acreage dedicated to the subject well by colored pencil or hatchure marks on the plat below.
- If more than one lease is dedicated to the well, outline each and identify the ownership thereof (both as to working interest and royalty).
- If more than one lease of different ownership is dedicated to the well, have the interest of all owners been consolidated by communitization, unitization, force-pooling, etc?  
☐ Yes ☐ No If answer is "yes" type of consolidation \_\_\_\_\_  
If answer is "no" list the owners and tract descriptions which have actually been consolidated. (Use reverse side of this form if necessary.) \_\_\_\_\_  
No allowable will be assigned to the well until all interests have been consolidated (by communitization, unitization, forced-pooling, or otherwise) or until a non-standard unit, eliminating such interest, has been approved by the Division.



OPERATOR CERTIFICATION

I hereby certify that the information contained herein is true and complete to the best of my knowledge and belief.

Signature

*John C. Corbett*

Printed Name

John C. Corbett

Position

Vice President-Exploration

Company

Hixon Development Company

Date

January 30, 1990

SURVEYOR CERTIFICATION

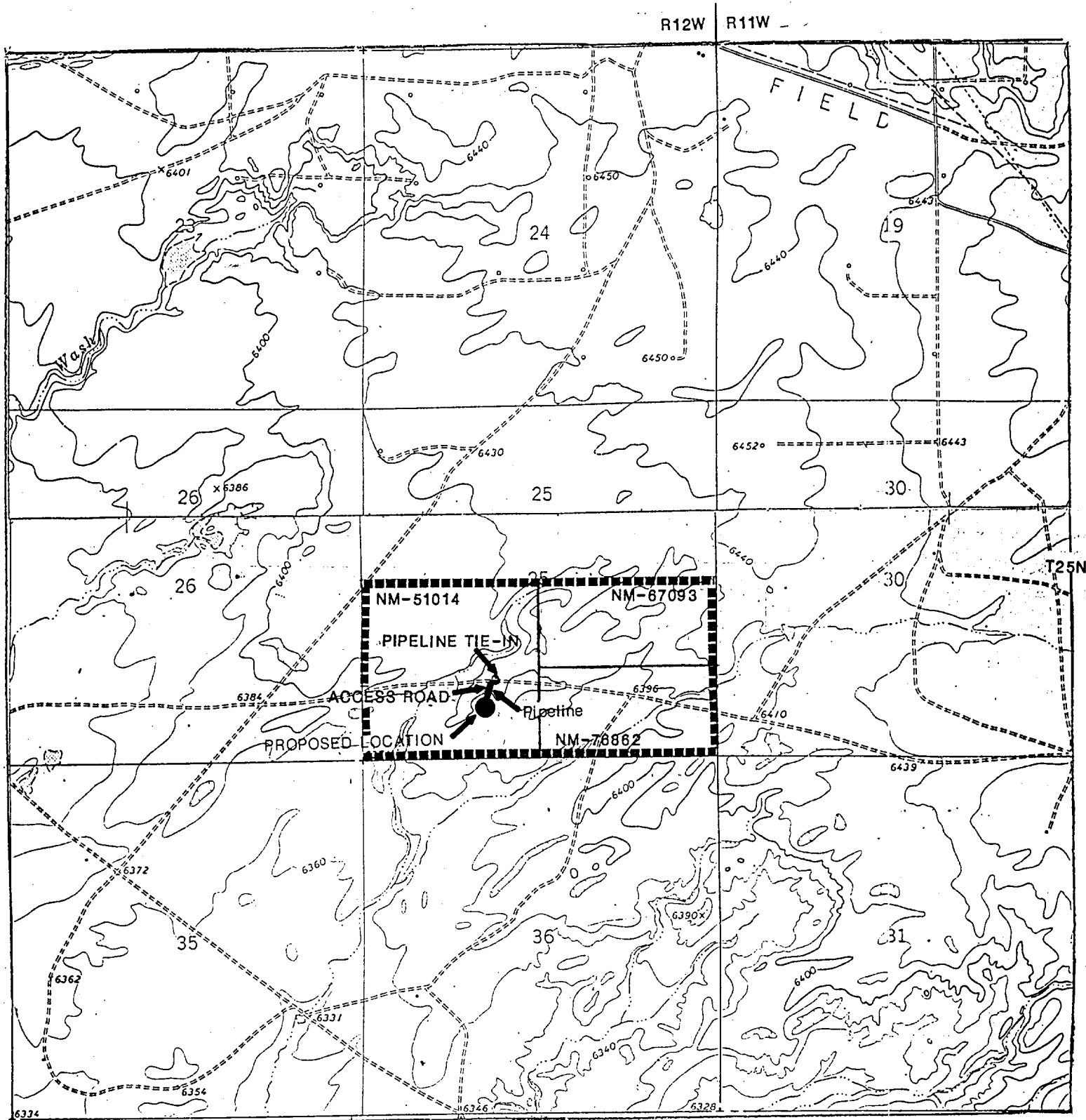
I hereby certify that the well location shown on this plat was plotted from field notes of actual surveys made by me or under my supervision, and that the same is true and correct to the best of my knowledge and belief.

Date Surveyed

January 17, 1990

Signature & Seal  
Professional Surveyor

*Edgar Risenhoover*  
Edgar Risenhoover  
5979  
Edgar Risenhoover



HIXON DEVELOPMENT COMPANY

Bisti Coal 25 No. 1

790' FSL 1850' FWL

Section 25, T25N, R12W

SAN JUAN COUNTY, NEW MEXICO