

UNITED STATES
DEPARTMENT OF THE INTERIOR
BUREAU OF LAND MANAGEMENT

APPLICATION FOR PERMIT TO DRILL, DEEPEN, OR PLUG BACK

1a. TYPE OF WORK

DRILL ☒

DEEPEN ☐

PLUG BACK ☐

b. TYPE OF WELL

OIL
WELL ☐

GAS
WELL ☒

OTHER

SINGLE
ZONE ☒

MULTIPLE
ZONE ☐

2. NAME OF OPERATOR

Hixon Development Company

3. ADDRESS OF OPERATOR

P. O. Box 2810, Farmington, NM 87499

4. LOCATION OF WELL (Report location clearly and in accordance with any State requirements.)*

At surface

2510' FSL, 1850' FWL

At proposed prod. zone

Section 26, T25N, R12W, NMPM

14. DISTANCE IN MILES AND DIRECTION FROM NEAREST TOWN OR POST OFFICE*

25.5 miles southeast of Farmington, NM

15. DISTANCE FROM PROPOSED*

LOCATION TO NEAREST
PROPERTY OR LEASE LINE, FT.
(Also to nearest drlg. unit line, if any)

130'

16. NO. OF ACRES IN LEASE

640.00

17. NO. OF ACRES ASSIGNED
TO THIS WELL

W/ 320

18. DISTANCE FROM PROPOSED LOCATION*
TO NEAREST WELL, DRILLING, COMPLETED,
OR APPLIED FOR, ON THIS LEASE, FT.

590'

19. PROPOSED DEPTH

1300'

20. ROTARY OR CABLE TOOLS

Rotary

21. ELEVATIONS (Show whether DE, RT, GR, etc.)

6361' GLE

22. APPROX. DATE WORK WILL START*

March 7, 1990

PROPOSED CASING AND CEMENTING PROGRAM

SIZE OF HOLE, IN.	SIZE OF CASING, IN.	WEIGHT PER FOOT	SETTING DEPTH	QUANTITY OF CEMENT ATTACHED
8-3/4"	7"	20#	110'	60 sks (1.18 ft ³ /sk) cmt to surface
6-1/4"	4-1/2"	10.5#	1300'	140 sks cmt to surface (75 sks - 2.06 ft ³ /sk) (65 sks - 1.18 ft ³ /sk)

It is proposed to drill the subject Basin Fruitland Coal Well. It will be evaluated on the basis of open hole logs. Please see attached Onshore Oil and Gas Order No. 1 data.

RECEIVED
MAR 9 1990
OIL CON. DIV.:
DIST. 3

"Approval of this action does
not constitute the approval
of the legal or equitable rights
or title to this lease."

IN ABOVE SPACE DESCRIBE PROPOSED PROGRAM: If proposal is to deepen or plug back, give data on present productive zone and proposed new productive zone. If proposal is to drill or deepen directionally, give pertinent data on subsurface locations and measured and true vertical depths. Give blowout preventer program, if any.

24.

SIGNED

John C. Corbett
John C. Corbett

TITLE

Vice President-Exploration

DATE

February 6, 1990

(This space for Federal or State office use)

PERMIT NO.

APPROVAL DATE

APPROVED BY

TITLE

DATE

CONDITIONS OF APPROVAL, IF ANY:

NMOCD

*See Instructions On Reverse Side

**APPROVED
AS AMENDED**

MAR 15 1990

John C. Corbett
AREA MANAGER

1981
JAN 14
VIA AIR MAIL
C. 1241

Submit to Appropriate
District Office
State Lease - 4 copies
Fee Lease - 3 copies

State of New Mexico
Energy, Minerals and Natural Resources Department

Form C-102
Revised 1-1-89

OIL CONSERVATION DIVISION

DISTRICT I
P.O. Box 1980, Hobbs, NM 88240

P.O. Box 2088
Santa Fe, New Mexico 87504-2088

DISTRICT II
P.O. Drawer DD, Artesia, NM 88210

DISTRICT III
1000 Rio Brazos Rd., Aztec, NM 87410

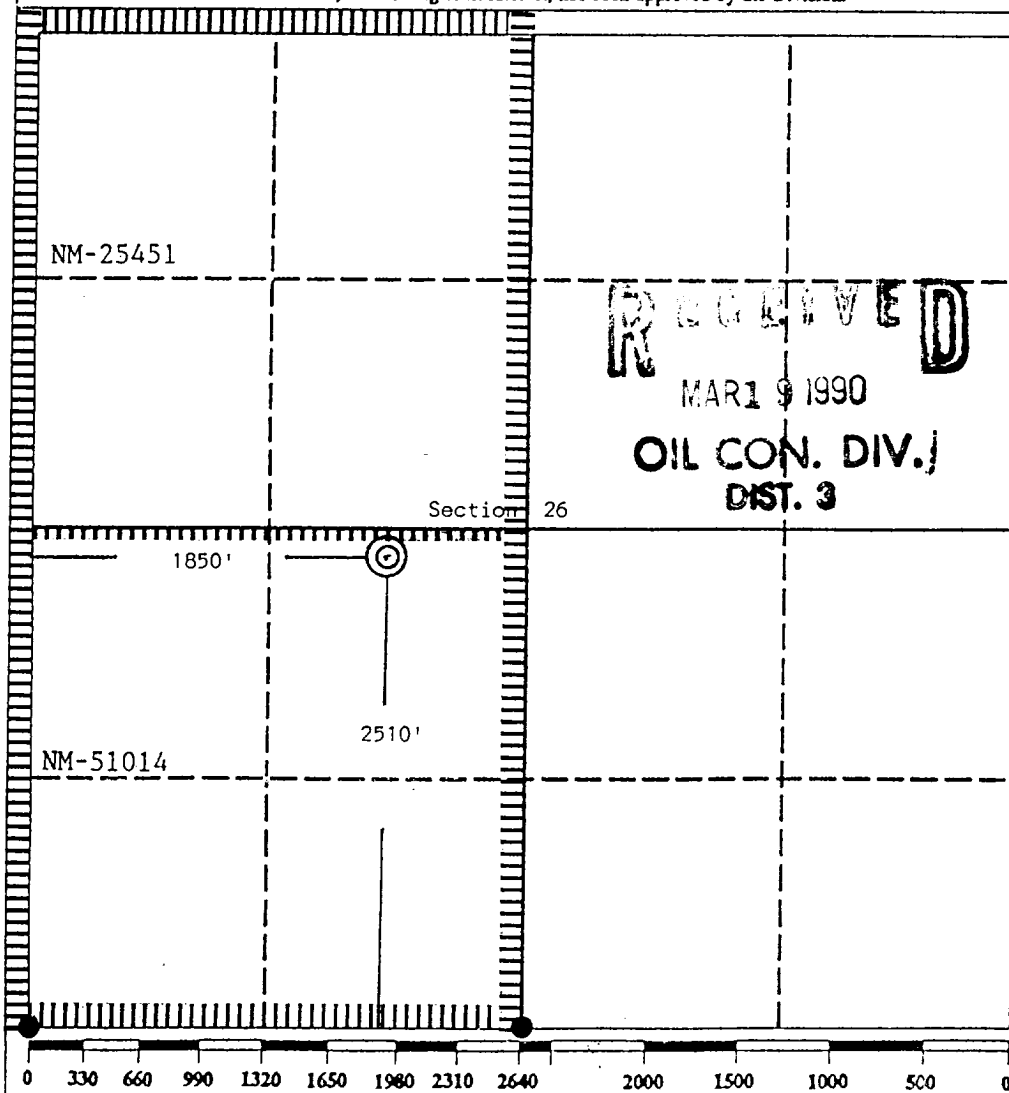
WELL LOCATION AND ACREAGE DEDICATION PLAT

All Distances must be from the outer boundaries of the section

Operator Hixon Development Company			Lease Bisti Coal 26 Com.		Well No. 2
Unit Letter K	Section 26	Township 25 North	Range 12 West	County San Juan	
Actual Footage Location of Well: 2510 feet from the South line and 1850 feet from the West line					
Ground level Elev. 6361	Producing Formation Fruitland		Pool Basin Fruitland Coal		Dedicated Acreage: 320 Acres

1. Outline the acreage dedicated to the subject well by colored pencil or hatchure marks on the plat below.
2. If more than one lease is dedicated to the well, outline each and identify the ownership thereof (both as to working interest and royalty).
3. If more than one lease of different ownership is dedicated to the well, have the interest of all owners been consolidated by communitization, unitization, force-pooling, etc.?
☐ Yes ☒ No If answer is "yes" type of consolidation _____

If answer is "no" list the owners and tract descriptions which have actually been consolidated. (Use reverse side of this form if necessary. NM-25451 and NM-51014 operated by Hixon Development Company
No allowable will be assigned to the well until all interests have been consolidated (by communitization, unitization, forced-pooling, or otherwise) or until a non-standard unit, eliminating such interest, has been approved by the Division.



OPERATOR CERTIFICATION

I hereby certify that the information contained herein is true and complete to the best of my knowledge and belief.

Signature

John C. Corbett

Printed Name

John C. Corbett

Position

Vice President-Exploration

Company

Hixon Development Company

Date

January 30, 1990

SURVEYOR CERTIFICATION

I hereby certify that the well location shown on this plat was plotted from field notes of actual surveys made by me or under my supervision, and that the same is true and correct to the best of my knowledge and belief.

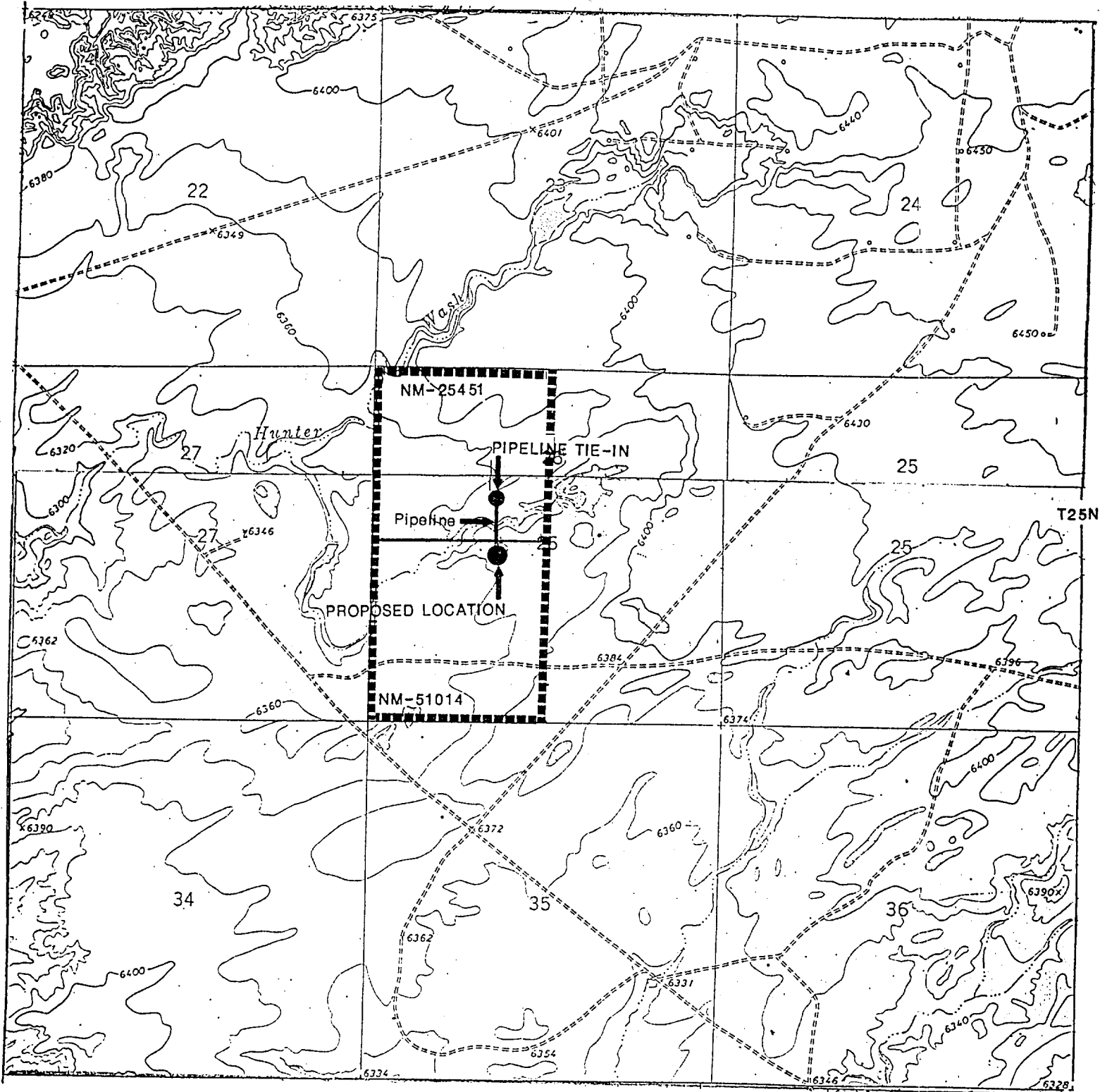
Date Surveyed

January 17, 1990

Signature & Seal of
Professional Surveyor

Edgar L. Risenhoover
Edgar L. Risenhoover
5979
REGISTERED LAND SURVEYOR
NEW MEXICO

R 12 W



HIXON DEVELOPMENT COMPANY

Bisti Coal 26 COM No. 2

2510' FSL 1850' FWL

Section 26, T25N, R12W

SAN JUAN COUNTY, NEW MEXICO